

**National Electricity
Transmission System Status Report**

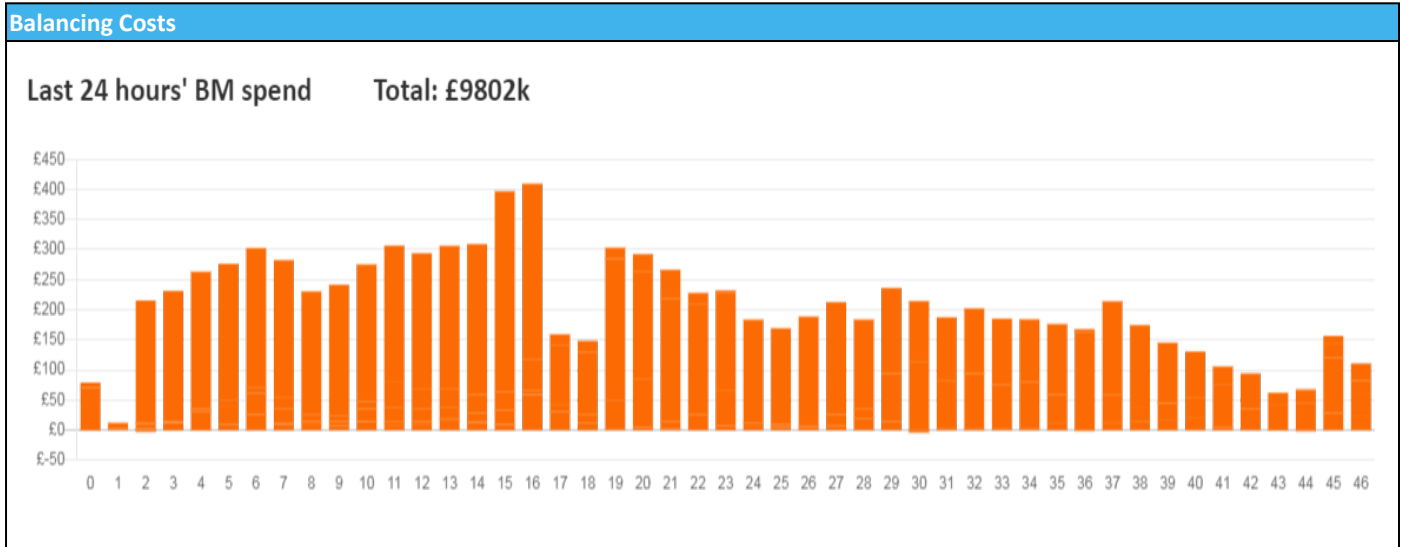


national**grid**ESO

National Electricity Transmission System Status Report
Monday 02 January 2023

Today's High Level Risk Status Forecast for the next 24h			
General Status		Voltage	
Demand		System Inertia	
System Margins		Weather	
Generation		Transmission	
Active Constraints			
System Warning			

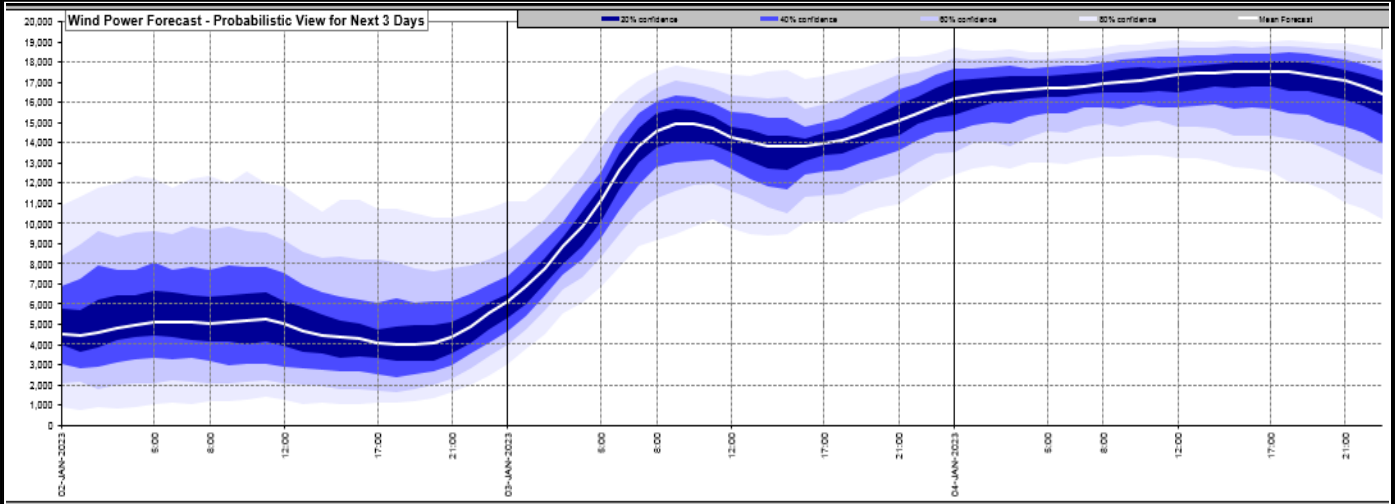
Today's Minimum De-Rated Margin	7116.69 (SP35)	
Current BMU Largest Loss Risk	Generation	1500 MW
	Demand	560MW



Yesterday's Market Summary	
Cash Out Price (Max)	£290.00 (SP 46)
Cash Out Price (Min)	-£66.55 (SP 8)
Peak Demand Yesterday	33, 970 MW
Minimum Demand	18, 800 MW

Interconnector Net Transfer Capacity (MWs)			
Today	Import	Export	Remarks
Netherlands (BritNed)	1100	1133	Fully Available
France (IFA2)	1014	1014	Fully Available
Belgium (Nemo)	1000	1025	Fully Available
Ireland (EWIC)	500	530	Fully Available
France (ElecLink)	1014	1014	Fully Available
France (IFA)	1000	1000	Partially available
Northern Ireland (MOYLE)	500	500	Fully Available
Norway (NSL)	1400	1400	Fully Available

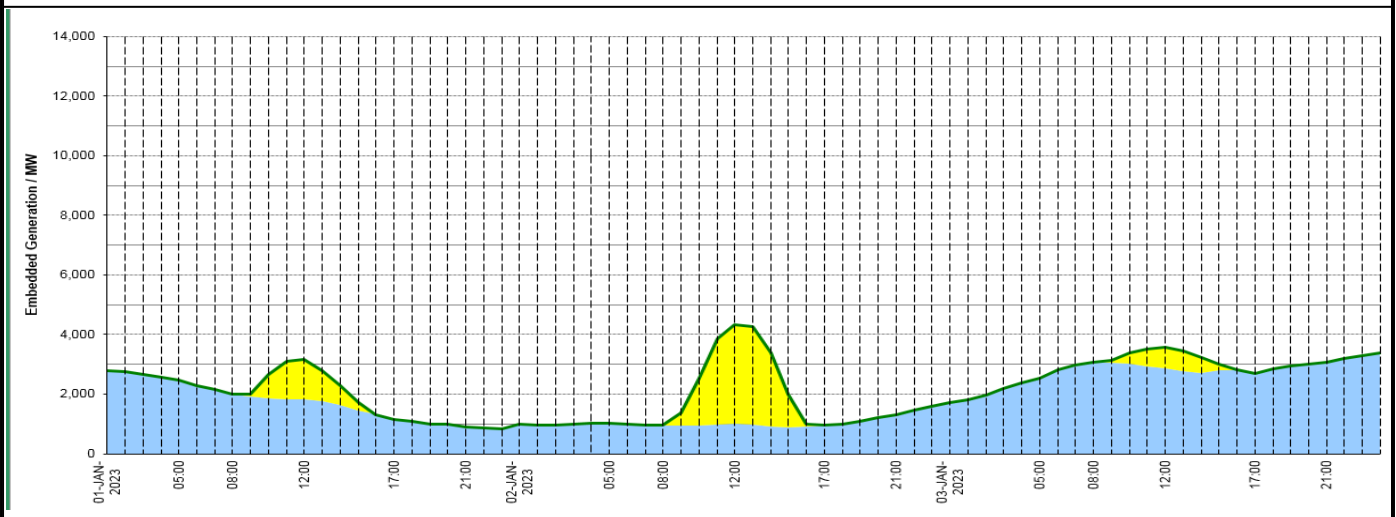
Wind Power Forecast



Expected embedded generation (MWs)

Embedded Generation Forecast

	01-JAN-2023					02-JAN-2023					03-JAN-2023						
	05:00	08:00	12:00	17:00	21:00	00:00	05:00	08:00	12:00	17:00	21:00	00:00	05:00	08:00	12:00	17:00	21:00
Solar (MW)	0	0	1313	0	0	0	0	0	3345	0	0	0	0	0	700	0	0
Wind (MW)	2464	1997	1843	1158	914	978	1033	957	998	956	1306	1705	2535	3078	2869	2708	3084
STOR (MW)	0	0	0	0	0	0	0	0	0	0	0	0	0	0	0	0	0
Total (MW)	2464	1997	3156	1158	914	978	1033	957	4343	956	1306	1705	2535	3078	3569	2708	3084



Weather	Source	Commentary
Latest forecast (Summary)	Met Office SEPA Natural Resources Wales	<p>Today: Many areas dry with some sunshine and lighter winds, offsetting somewhat lower temperatures. However there may be early showers in some exposed western, and possibly far southeastern, parts. Showers more widespread and heavier in west and northwest Scotland by afternoon.</p> <p>Tonight: Many parts starting clear with frost developing and some fog in eastern areas. Increasing cloud and wind should lift temperatures in most southern and western areas later, rain following eastwards.</p>
General Weather Concerns e.g. wind, rain, snow, flooding, GB Weather Warnings	Met Office Weather Warnings SEPA Natural Resources Wales	<p>UK Weather Warnings Yellow warning of ice Areas affected: Central, Tayside & Fife Grampian Highlands & Eilean Siar Orkney & Shetland SW Scotland, Lothian Borders Strathclyde</p> <p>ACTIVE Started at: 18:00 GMT on Sun 1 January Ends: 11:00 GMT on Mon 2 January Icy stretches likely to form Sunday evening Yellow warning of ice Areas affected: North East England North West England Northern Ireland SW Scotland, Lothian Borders Yorkshire & Humber</p>

Weather	Source	Commentary
		ACTIVE Started at: 00:00 GMT on Mon 2 January Ends: 11:00 GMT on Mon 2 January Icy stretches likely to form on Monday morning
		Flood Warnings 16 flood warnings and 86 flood alerts issued for England. 0 flood warnings and 0 flood alerts issued for Scotland. 0 flood warnings and 12 flood alerts issued for Wales.

Contains public sector information licensed under the Open Government Licence v1.0

Further Information	
BM Reports	https://www.bmreports.com
System Balancing Reports	https://www.nationalgrideso.com/balancing-data/system-balancing-reports
Forecast Volumes and Costs	https://www.nationalgrideso.com/balancing-data/forecast-volumes-and-costs
NGESO Insights	https://www.nationalgrideso.com/insights