

National Electricity Transmission System Status Report

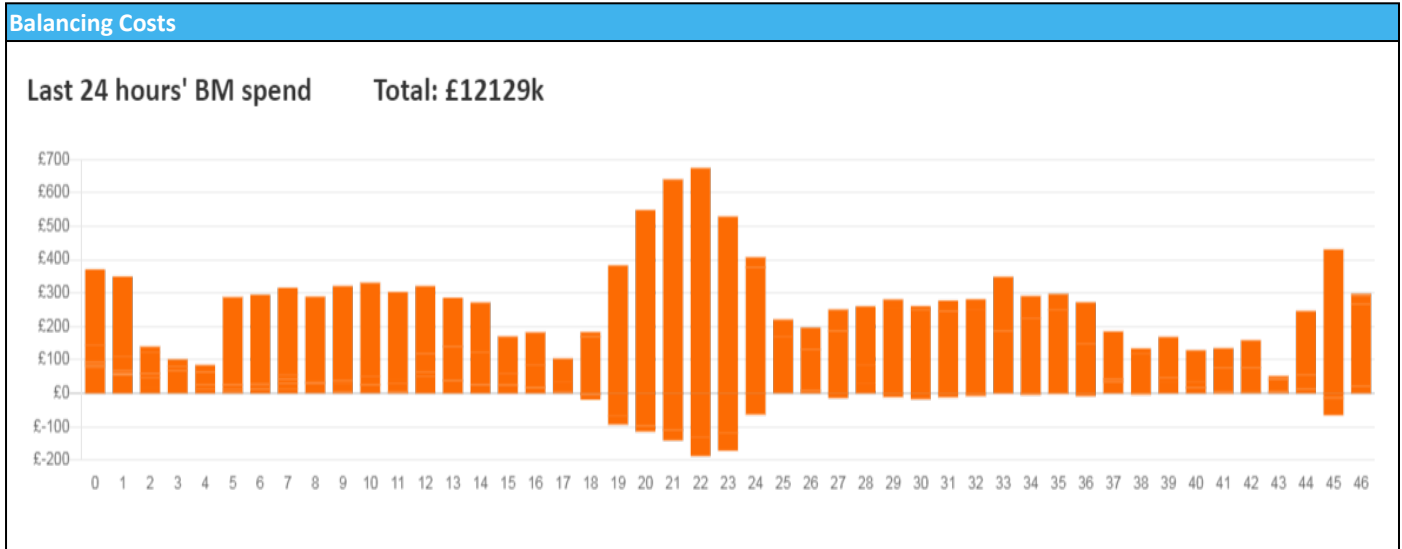


nationalgridESO

National Electricity Transmission System Status Report
Sunday 01 January 2023

Today's High Level Risk Status Forecast for the next 24h			
General Status		Voltage	
Demand		System Inertia	
System Margins		Weather	
Generation		Transmission	
Active Constraints			
System Warning			

Today's Minimum De-Rated Margin	13,045.34 (SP35)	
Current BMU Largest Loss Risk	Generation	1500 MW
	Demand	1050 MW



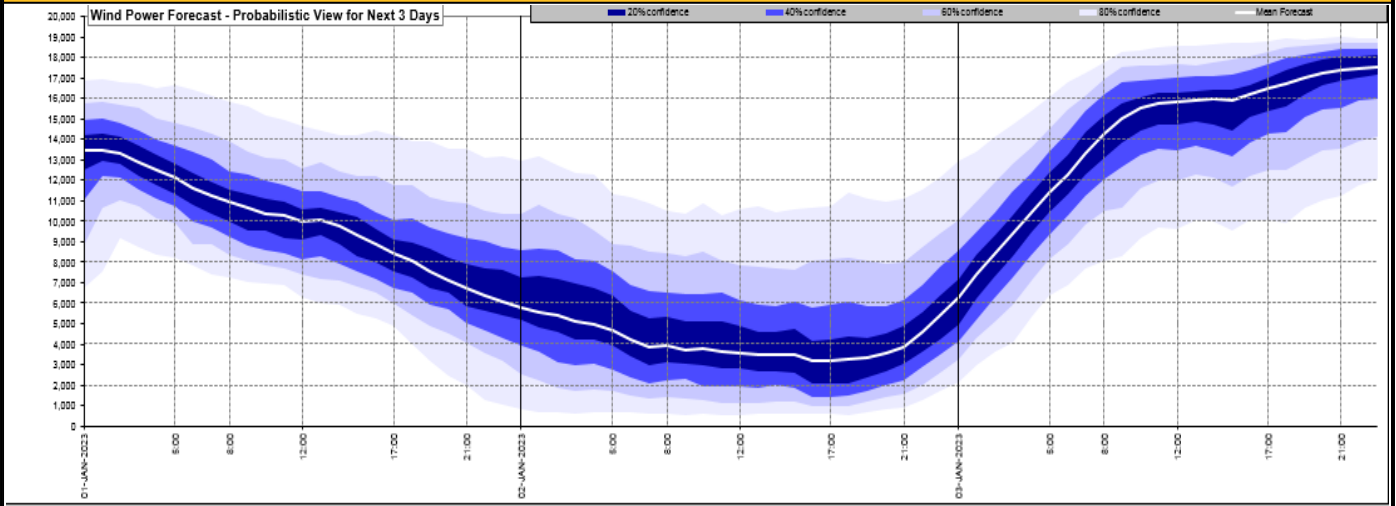
Yesterday's Market Summary

Cash Out Price (Max)	£448.00 (SP 24/25)
Cash Out Price (Min)	-£49.67 (SP 13)
Peak Demand Yesterday	34,538 MW
Minimum Demand	17,000 MW

Interconnector
Net Transfer Capacity (MWs)

Today	Import	Export	Remarks
Netherlands (BritNed)	1100	1133	Fully Available
France (IFA2)	1014	1014	Fully Available
Belgium (Nemo)	1000	1025	Fully Available
Ireland (EWIC)	500	530	Fully Available
France (ElecLink)	1014	1014	Fully Available
France (IFA)	1000	1000	Partially available
Northern Ireland (MOYLE)	500	500	Fully Available
Norway (NSL)	1400	1400	Fully Available

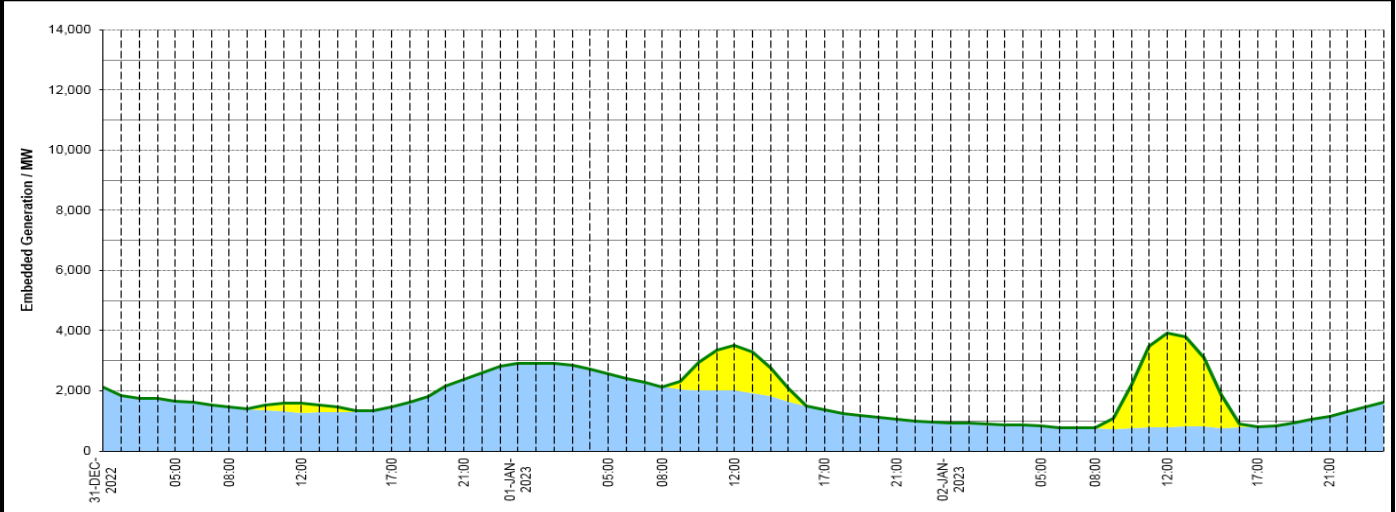
Wind Power Forecast



Expected embedded generation (MWs)

Embedded Generation Forecast

	31-DEC-2022					01-JAN-2023					02-JAN-2023						
	05:00	08:00	12:00	17:00	21:00	00:00	05:00	08:00	12:00	17:00	21:00	00:00	05:00	08:00	12:00	17:00	21:00
Solar (MW)	0	0	310	0	0	0	0	0	1520	0	0	0	0	0	3142	0	0
Wind (MW)	1665	1459	1274	1453	2387	2910	2582	2132	2005	1361	1063	936	835	768	782	820	1152
STOR (MW)	0	0	0	0	0	0	0	0	0	0	0	0	0	0	0	0	0
Total (MW)	1665	1459	1584	1453	2387	2910	2582	2132	3525	1361	1063	936	835	768	3924	820	1152



Weather	Source	Commentary
Latest forecast (Summary)	Met Office SEPA Natural Resources Wales	<p>Today: Cold and cloudy for much of Scotland with rain and hill snow, this mainly confined to the north and east later. Elsewhere, sunny spells but also some showers, mainly in the west. More persistent rain returning to southern England later.</p> <p>Tonight: Rain and hill snow over Scotland gradually clearing, clearer skies and icy patches following. Elsewhere, a mixture of clear spells and showers, though many dry later. Colder than last night.</p>
General Weather Concerns e.g. wind, rain, snow, flooding, GB Weather Warnings	Met Office Weather Warnings SEPA Natural Resources Wales	<p>UK Weather Warnings Yellow warning of ice Areas affected: Grampian Highlands & Eilean Siar Orkney & Shetland</p> <p>ACTIVE Started at: 18:00 GMT on Sat 31 December Ends: 11:00 GMT on Sun 1 January Icy stretches likely to form Saturday night and last through much of Sunday morning</p> <p>Yellow warning of snow Areas affected: Central, Tayside & Fife SW Scotland, Lothian Borders Strathclyde</p> <p>ACTIVE Started at: 22:00 GMT on Sat 31 December Ends: 10:00 GMT on Sun 1 January Spells of snow, mainly over hills and mountains, may cause some travel disruption.</p>

Weather	Source	Commentary
		<p>Yellow warning of snow Areas affected: Central, Tayside & Fife Grampian Highlands & Eilean Siar Strathclyde</p> <p>ACTIVEStarted at: 03:00 GMT on Sun 1 JanuaryEnds: 12:00 GMT on Sun 1 January Spells of snow, mainly over hills and mountains, may cause some travel disruption.</p> <p>Flood Warnings 12 flood warnings and 94 flood alerts issued for England.</p> <p>2 flood warnings and 3 flood alerts issued for Scotland.</p> <p>0 flood warnings and 12 flood alerts issued for Wales.</p>

Contains public sector information licensed under the Open Government Licence v1.0

Further Information	
BM Reports	https://www.bmreports.com
System Balancing Reports	https://www.nationalgrideso.com/balancing-data/system-balancing-reports
Forecast Volumes and Costs	https://www.nationalgrideso.com/balancing-data/forecast-volumes-and-costs
NGESO Insights	https://www.nationalgrideso.com/insights