

National Electricity Transmission System Status Report

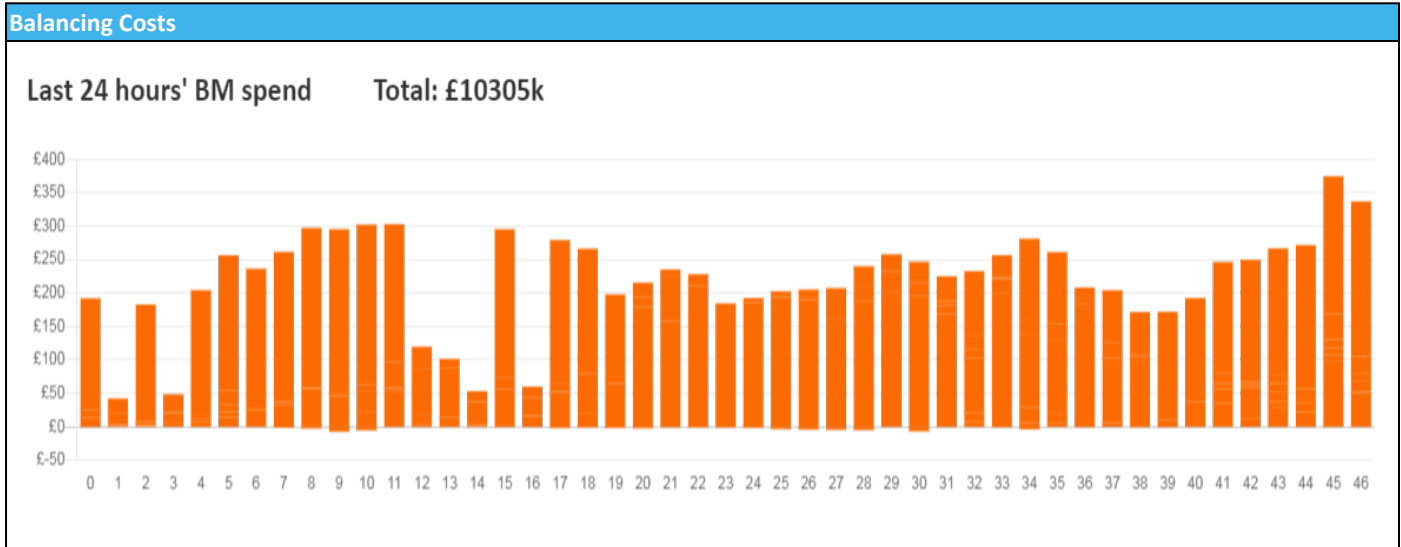


nationalgridESO

National Electricity Transmission System Status Report
Saturday 31 December 2022

Today's High Level Risk Status Forecast for the next 24h			
General Status		Voltage	
Demand		System Inertia	
System Margins		Weather	
Generation		Transmission	
Active Constraints			
System Warning			

Today's Minimum De-Rated Margin	12802.84 (SP34)	
Current BMU Largest Loss Risk	Generation	1400 MW
	Demand	1050 MW



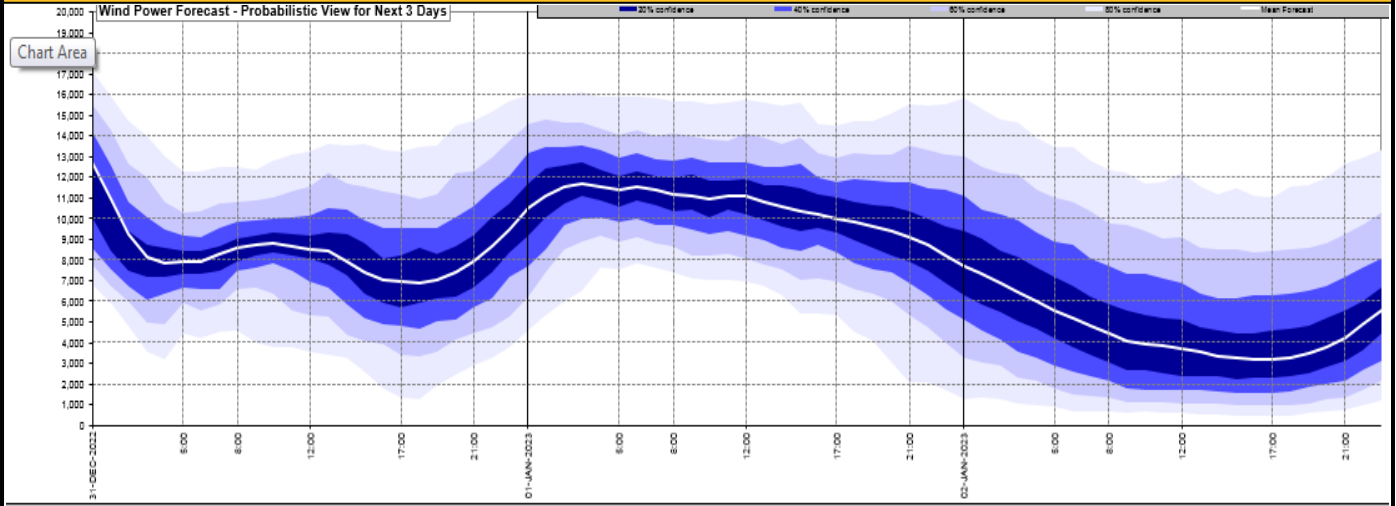
Yesterday's Market Summary

Cash Out Price (Max)	£212.00 (SP 15)
Cash Out Price (Min)	-£69.00 (SP 10)
Peak Demand Yesterday	35.141 MW
Minimum Demand	19.100MW

Interconnector Net Transfer Capacity (MWs)

Today	Import	Export	Remarks
Netherlands (BritNed)	1100	1133	Fully Available
France (IFA2)	1014	1014	Fully Available
Belgium (Nemo)	1000	1025	Fully Available
Ireland (EWIC)	500	530	Fully Available
France (ElecLink)	1014	1014	0MW until 08:00 then fully available
France (IFA)	1000	1000	Partially available
Northern Ireland (MOYLE)	500	500	Fully Available
Norway (NSL)	1400	1400	Fully Available

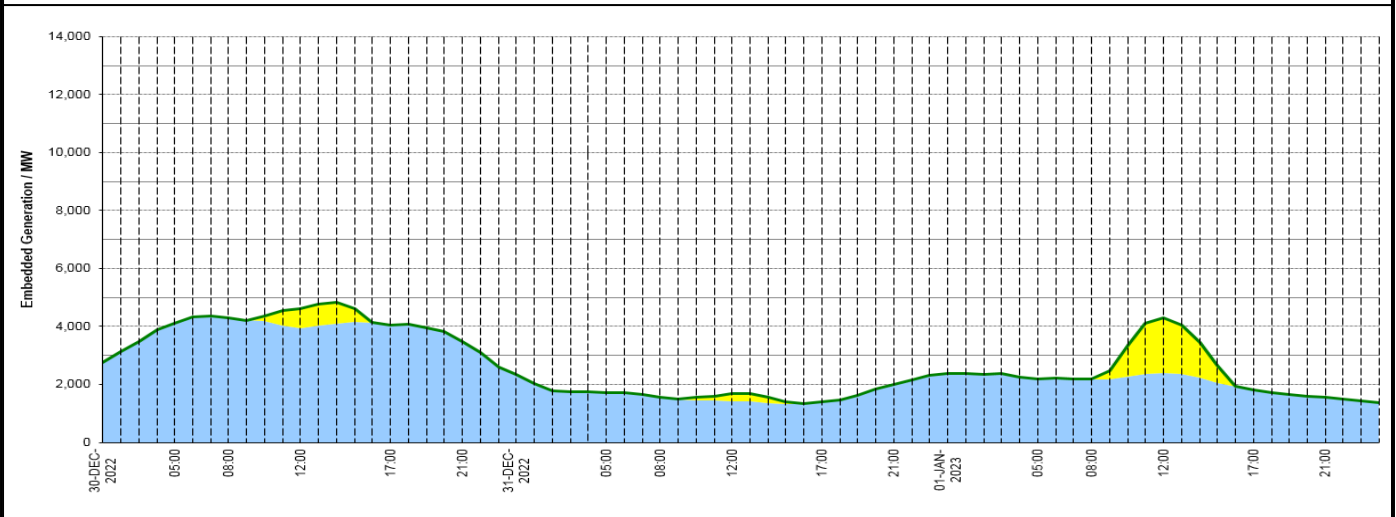
Wind Power Forecast



Expected embedded generation (MWs)

Embedded Generation Forecast

	30-DEC-2022					31-DEC-2022					01-JAN-2023						
	05:00	08:00	12:00	17:00	21:00	00:00	05:00	08:00	12:00	17:00	21:00	00:00	05:00	08:00	12:00	17:00	21:00
Solar (MW)	0	0	662	0	0	0	0	0	260	0	0	0	0	0	1899	0	0
Wind (MW)	4107	4312	3940	4059	3490	2344	1733	1552	1423	1390	2006	2393	2198	2185	2406	1810	1550
STOR (MW)	0	0	0	0	0	0	0	0	0	0	0	0	0	0	0	0	0
Total (MW)	4107	4312	4602	4059	3490	2344	1733	1552	1683	1390	2006	2393	2198	2185	4305	1810	1550



Weather	Source	Commentary
Latest forecast (Summary)	Met Office SEPA Natural Resources Wales	Today: Mostly cloudy with rain, heavy at times, affecting many areas and risk of patchy hill snow over northern England and southern Scotland later. Colder with further wintry showers across northern Scotland. Mild and windy in the south with coastal gales. Tonight: Cold and frosty with icy patches across northern Scotland. Elsewhere, further spells of rain and some hill snow over parts of Scotland. Clear spells developing over England and Wales later.
General Weather Concerns e.g. wind, rain, snow, flooding, GB Weather Warnings	Met Office Weather Warnings SEPA Natural Resources Wales	UK Weather Warnings Yellow warning of ice Areas affected: Central, Tayside & Fife Grampian Highlands & Eilean Siar Orkney & Shetland ACTIVE Started at: 21:00 GMT on Fri 30 December Ends: 11:00 GMT on Sat 31 December Icy patches expected to develop on untreated surfaces. Yellow warning of rain Areas affected: London & South East England South West England Wales ACTIVE Started at: 00:00 GMT on Sat 31 December Ends: 21:00 GMT on Sat 31 December

Weather	Source	Commentary
		<p>Heavy rain is expected to bring some surface water flooding and travel disruption.</p> <p>Yellow warning of snow Areas affected: Highlands & Eilean Siar Orkney & Shetland</p> <p>Starts: 06:00 GMT on Sat 31 December Ends: 15:00 GMT on Sat 31 December Snow bringing some travel disruption.</p> <p>- Some roads and railways likely to be affected with longer journey times by road, bus and train services</p> <p>Flood Warnings 6 flood warnings and 50 flood alerts issued for England.</p> <p>30 flood warnings and 10 flood alerts issued for Scotland.</p> <p>0 flood warnings and 8 flood alerts issued for Wales.</p>

Contains public sector information licensed under the Open Government Licence v1.0

Further Information	
BM Reports	https://www.bmreports.com
System Balancing Reports	https://www.nationalgrideso.com/balancing-data/system-balancing-reports
Forecast Volumes and Costs	https://www.nationalgrideso.com/balancing-data/forecast-volumes-and-costs
NGESO Insights	https://www.nationalgrideso.com/insights