

**National Electricity
Transmission System Status Report**

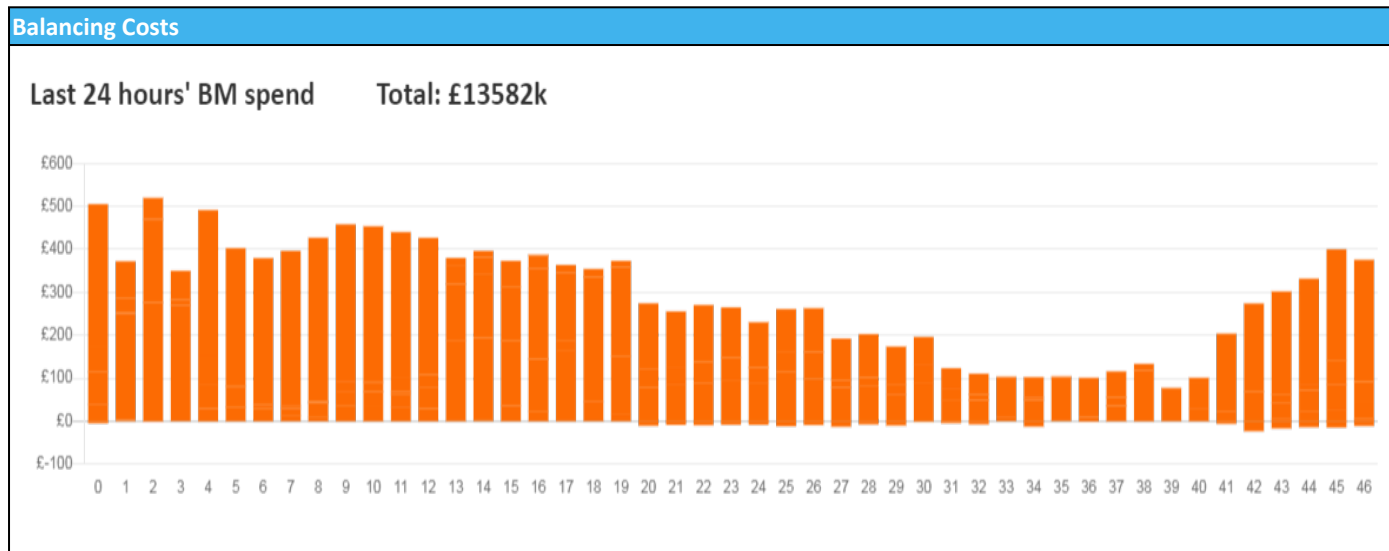


national**grid**ESO

National Electricity Transmission System Status Report
Tuesday 27 December 2022

Today's High Level Risk Status Forecast for the next 24h			
General Status		Voltage	
Demand		System Inertia	
System Margins		Weather	
Generation		Transmission	
Active Constraints			
System Warning			

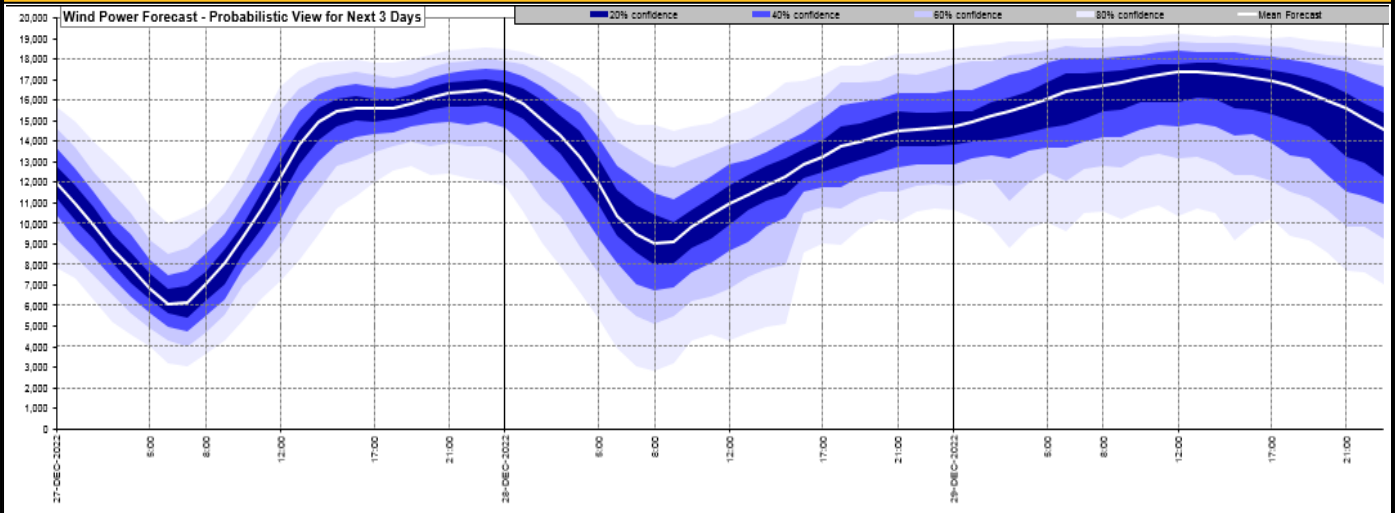
Today's Minimum De-Rated Margin	18,315 (SP 3)	
Current BMU Largest Loss Risk	Generation	1500 MW
	Demand	1050 MW



Yesterday's Market Summary	
Cash Out Price (Max)	£250.00 (SP 40 & 41)
Cash Out Price (Min)	-£48.74 (SP 10)
Peak Demand Yesterday	31,840MW
Minimum Demand	16,546 MW

Interconnector Net Transfer Capacity (MWs)			
Today	Import	Export	Remarks
Netherlands (BritNed)	1100	1133	Fully Available
France (IFA2)	1014	1014	Fully Available
Belgium (Nemo)	1000	1025	Fully Available
Ireland (EWIC)	500	530	Fully Available
France (ElecLink)	1014	1014	Fully Available
France (IFA)	1000	1000	Partially available
Northern Ireland (MOYLE)	500	500	Fully Available
Norway (NSL)	1400	1400	Fully Available

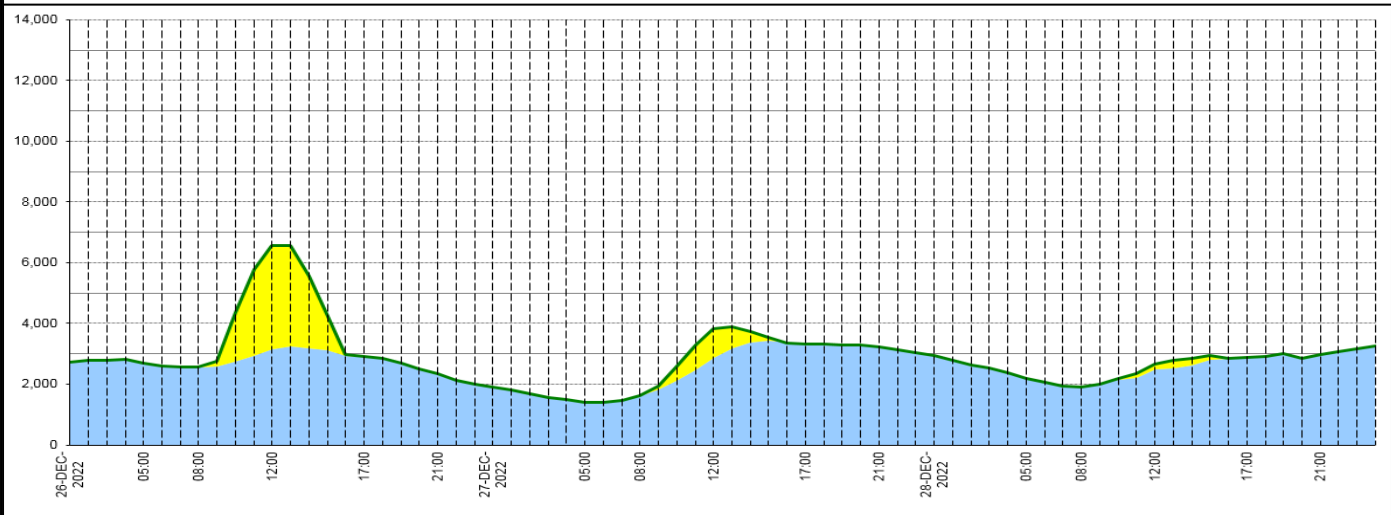
Wind Power Forecast



Expected embedded generation (MWs)

Embedded Generation Forecast

	26-DEC-2022					27-DEC-2022					28-DEC-2022						
	05:00	08:00	12:00	17:00	21:00	00:00	05:00	08:00	12:00	17:00	21:00	00:00	05:00	08:00	12:00	17:00	21:00
Solar (MW)	0	0	3412	0	0	0	0	0	949	0	0	0	0	0	193	0	0
Wind (MW)	2682	2559	3151	2907	2344	1912	1399	1612	2882	3316	3241	2953	2193	1900	2481	2887	2962
STOR (MW)	0	0	0	0	0	0	0	0	0	0	0	0	0	0	0	0	0
Total (MW)	2682	2559	6563	2907	2344	1912	1399	1612	3831	3316	3241	2953	2193	1900	2674	2887	2962



Weather	Source	Commentary
Latest forecast (Summary)	Met Office SEPA Natural Resources Wales	<p>Today: Milder, wetter, windier weather moving northeastwards. Some heavy rain across western hills but snow more likely for parts of the north, especially hills in northern Scotland. Drier in west later.</p> <p>Tonight: Rain clearing east but probably lingering in the far north. Elsewhere, a lot of dry weather developing but rain redeveloping in the south later. A patchy frost in the north.</p>
General Weather Concerns e.g. wind, rain, snow, flooding, GB Weather Warnings	Met Office Weather Warnings SEPA Natural Resources Wales	<p>UK Weather Warnings Yellow warning of ice Areas affected: Orkney & Shetland</p> <p>ACTIVE started at: 18:00 GMT on Mon 26 December Ends: 11:00 GMT on Tue 27 December</p> <p>Wintry showers continuing overnight leading to an ice risk on untreated surfaces.</p> <ul style="list-style-type: none"> - Probably some icy patches on some untreated roads, pavements and cycle paths, making accidents and injuries more likely - Strong winds, sleet and snow this evening could make driving conditions difficult

Weather	Source	Commentary
		<p>Issued at: 09:36 GMT on Mon 26 December Yellow warning of snow and ice Areas affected: Central, Tayside & Fife Grampian Highlands & Eilean Siar Orkney & Shetland Strathclyde</p> <p>ACTIVE Started at: 18:00 GMT on Mon 26 December Ends: 15:00 GMT on Tue 27 December Travel disruption is possible from wintry showers leading to patchy ice tonight, followed by snow during Tuesday, mainly on higher routes.</p> <ul style="list-style-type: none"> - Some roads and railways likely to be affected by snow, resulting in longer journey times by car, bus and train - Probably some icy patches on some untreated roads, pavements and cycle paths, leading to an increased chance of injuries and accidents
		<p>Issued at: 09:37 GMT on Mon 26 December Yellow warning of ice Areas affected: Central, Tayside & Fife East Midlands Highlands & Eilean Siar North East England North West England SW Scotland, Lothian Borders Strathclyde Yorkshire & Humber</p> <p>ACTIVE Started at: 18:00 GMT on Mon 26 December Ends: 10:00 GMT on Tue 27 December Wintry showers fading tonight leading to an ice risk on untreated surfaces.</p> <ul style="list-style-type: none"> - Probably some icy patches on some untreated roads, pavements and cycle paths leading to a greater chance of injuries or accidents - Patchy snow on higher routes, both from wintry showers this evening, and also on leading edge of rain early on Tuesday, making for somewhat difficult driving conditions
		<p>Issued at: 09:35 GMT on Mon 26 December</p> <p>Flood Warnings 0 flood warnings and 25 flood alerts issued for England.</p> <p>0 flood warnings and 0 flood alerts issued for Scotland.</p> <p>0 flood warnings and 0 flood alerts issued for Wales.</p>

Contains public sector information licensed under the Open Government Licence v1.0

Further Information	
BM Reports	https://www.bmreports.com
System Balancing Reports	https://www.nationalgrideso.com/balancing-data/system-balancing-reports
Forecast Volumes and Costs	https://www.nationalgrideso.com/balancing-data/forecast-volumes-and-costs
NGESO Insights	https://www.nationalgrideso.com/insights