

**National Electricity  
Transmission System Status Report**

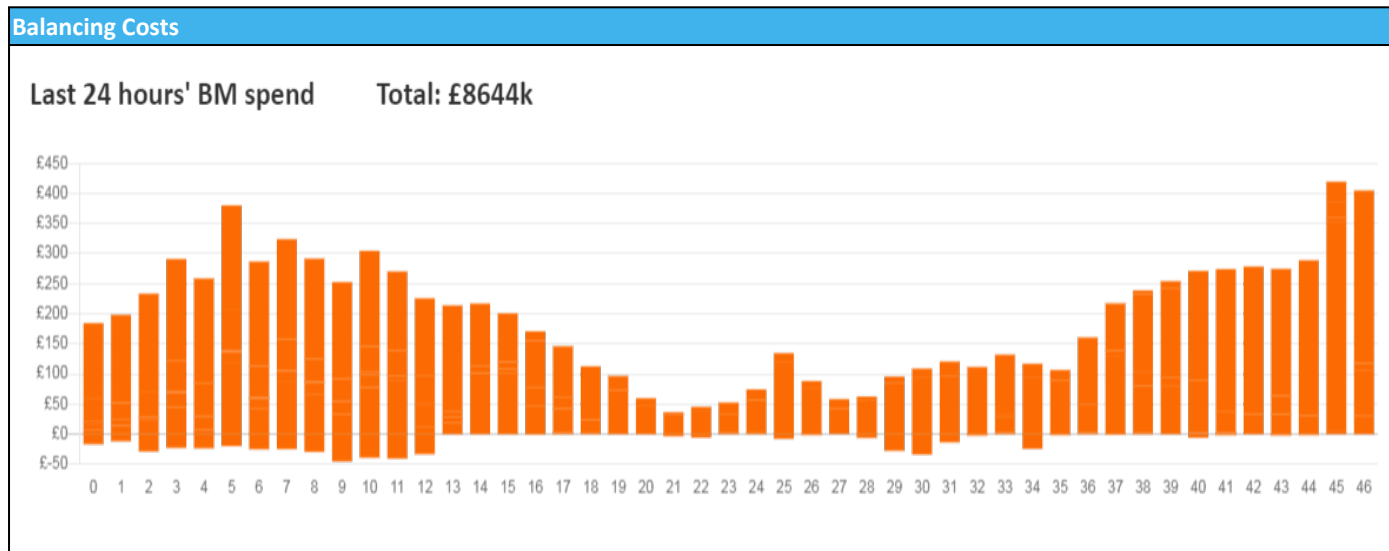


national**grid**ESO

National Electricity Transmission System Status Report  
Sunday 25 December 2022

Today's High Level Risk Status Forecast for the next 24h			
General Status		Voltage	
Demand		System Inertia	
System Margins		Weather	
Generation		Transmission	
Active Constraints			
<a href="#">System Warning</a>			

<a href="#">Today's Minimum De-Rated Margin</a>	15,185 (SP 27)	
Current BMU Largest Loss Risk	Generation	1500 MW
	Demand	560 MW



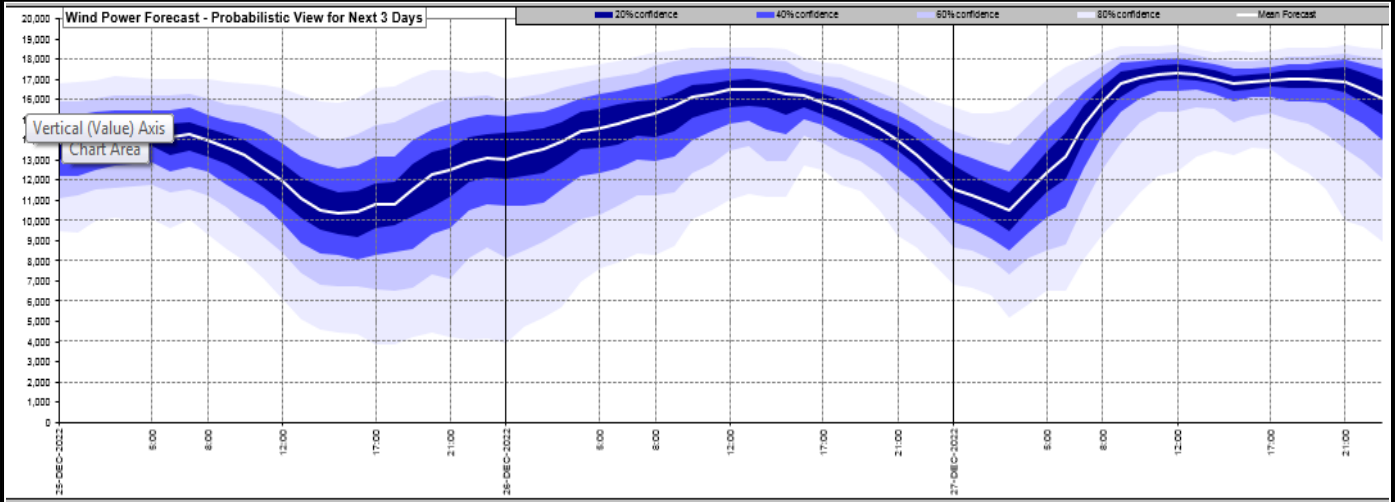
**Yesterday's Market Summary**

<a href="#">Cash Out Price (Max)</a>	£249.00 (SP 27)
<a href="#">Cash Out Price (Min)</a>	£0.0 (SP 15-17)
<a href="#">Peak Demand Yesterday</a>	32,599 MW
Minimum Demand	16,550 MW

**Interconnector Net Transfer Capacity (MWs)**

Today	Import	Export	Remarks
Netherlands (BritNed)	1100	1133	Fully Available
France (IFA2)	1014	1014	Fully Available
Belgium (Nemo)	1000	1025	Fully Available
Ireland (EWIC)	500	530	Fully Available
France (ElecLink)	1014	1014	Fully Available
France (IFA)	1000	1000	Partially available
Northern Ireland (MOYLE)	500	500	Fully Available
Norway (NSL)	1400	1400	Fully Available

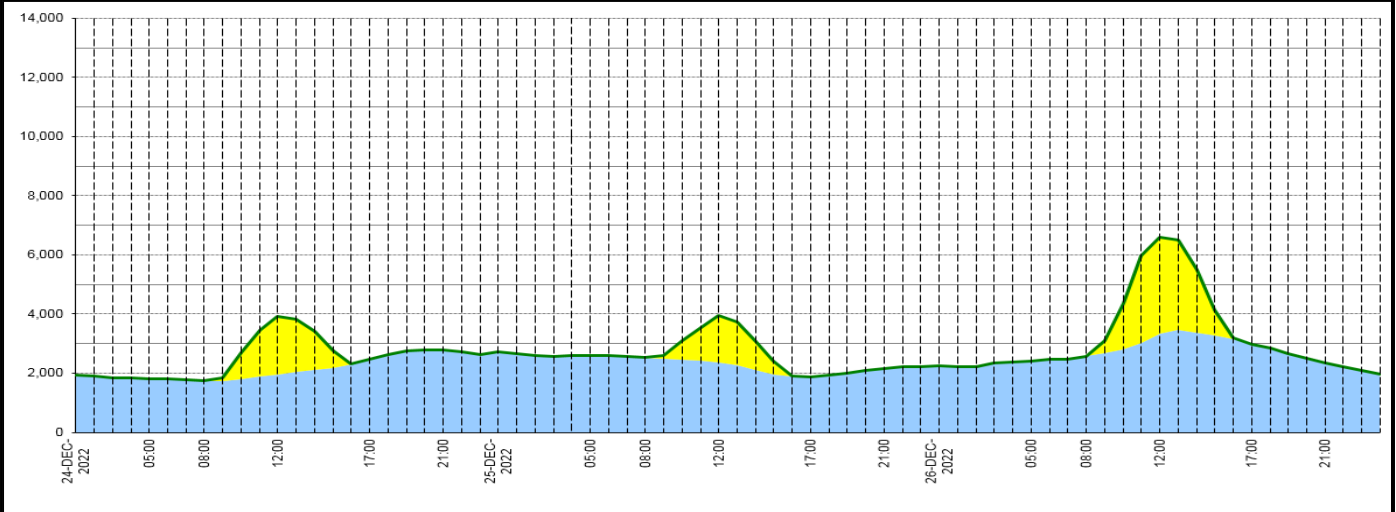
**Wind Power Forecast**



**Expected embedded generation (MWs)**

**Embedded Generation Forecast**

	24-DEC-2022					25-DEC-2022					26-DEC-2022						
	05:00	08:00	12:00	17:00	21:00	00:00	05:00	08:00	12:00	17:00	21:00	00:00	05:00	08:00	12:00	17:00	21:00
Solar (MW)	0	0	1963	0	0	0	0	0	1579	0	0	0	0	0	3286	0	0
Wind (MW)	1814	1744	1953	2471	2788	2723	2584	2529	2373	1874	2145	2249	2401	2569	3324	2992	2343
STOR (MW)	0	0	0	0	0	0	0	0	0	0	0	0	0	0	0	0	0
<b>Total (MW)</b>	<b>1814</b>	<b>1744</b>	<b>3916</b>	<b>2471</b>	<b>2788</b>	<b>2723</b>	<b>2584</b>	<b>2529</b>	<b>3952</b>	<b>1874</b>	<b>2145</b>	<b>2249</b>	<b>2401</b>	<b>2569</b>	<b>6610</b>	<b>2992</b>	<b>2343</b>



Weather	Source	Commentary
Latest forecast (Summary)	<a href="#">Met Office</a> <a href="#">SEPA</a> <a href="#">Natural Resources Wales</a>	<p><b>Today:</b> Sunshine and showers for most. Eastern England drier, but a longer cloudier spell with rain may move across parts of south and southeast England. Heavy showers with hail or thunder are possible in the west. Colder in the northwest later.</p> <p><b>Tonight:</b> Showery bands of rain clearing all but southeast England later. Colder weather follows, with patchy frost, and also wintry showers in the north; some ice and snowfall for Scotland.</p>
General Weather Concerns e.g. wind, rain, snow, flooding, GB Weather Warnings	<a href="#">Met Office</a> <a href="#">Weather Warnings</a> <a href="#">SEPA</a> <a href="#">Natural Resources Wales</a>	<p><b>UK Weather Warnings</b> Yellow warning of snow and ice Areas affected: Central, Tayside &amp; Fife   Grampian   Highlands &amp; Eilean Siar   Strathclyde</p> <p>Starts: 21:00 GMT on Sun 25 December Ends: 18:00 GMT on Mon 26 December Frequent blustery snow showers are likely to cause some travel disruption to higher routes.</p> <p>- Some roads and railways likely to be affected with longer journey times by road, bus and train services</p>

Weather	Source	Commentary
		<ul style="list-style-type: none"> <li>- A very small chance of interruptions to power supplies.</li> <li>- Probably some icy patches on some untreated roads, pavements and cycle paths</li> </ul>
		<p><b>Flood Warnings</b></p> <p>3 flood warnings and 55 flood alerts issued for England.</p> <p>0 flood warnings and 0 flood alerts issued for Scotland.</p> <p>0 flood warnings and 4 flood alerts issued for Wales.</p>

*Contains public sector information licensed under the Open Government Licence v1.0*

Further Information	
BM Reports	<a href="https://www.bmreports.com">https://www.bmreports.com</a>
System Balancing Reports	<a href="https://www.nationalgrideso.com/balancing-data/system-balancing-reports">https://www.nationalgrideso.com/balancing-data/system-balancing-reports</a>
Forecast Volumes and Costs	<a href="https://www.nationalgrideso.com/balancing-data/forecast-volumes-and-costs">https://www.nationalgrideso.com/balancing-data/forecast-volumes-and-costs</a>
NGESO Insights	<a href="https://www.nationalgrideso.com/insights">https://www.nationalgrideso.com/insights</a>