

National Electricity Transmission System Status Report

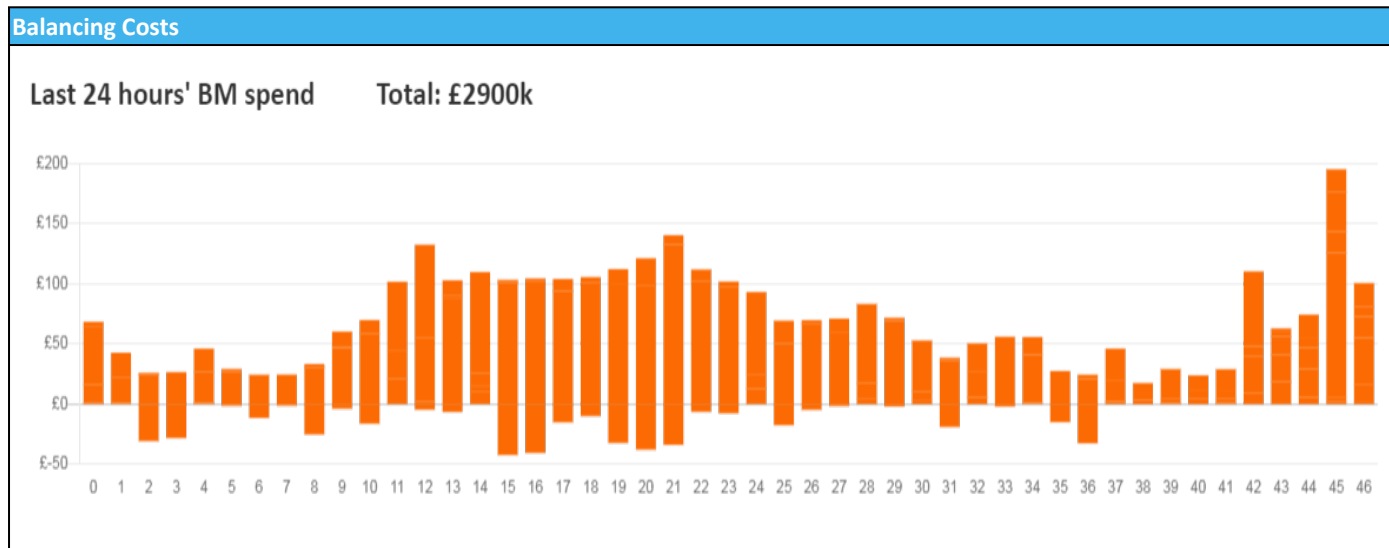


nationalgridESO

National Electricity Transmission System Status Report
Saturday 24 December 2022

Today's High Level Risk Status Forecast for the next 24h			
General Status		Voltage	
Demand		System Inertia	
System Margins		Weather	
Generation		Transmission	
Active Constraints			
System Warning			

Today's Minimum De-Rated Margin	14,871 (SP 34)	
Current BMU Largest Loss Risk	Generation	1600 MW
	Demand	560 MW



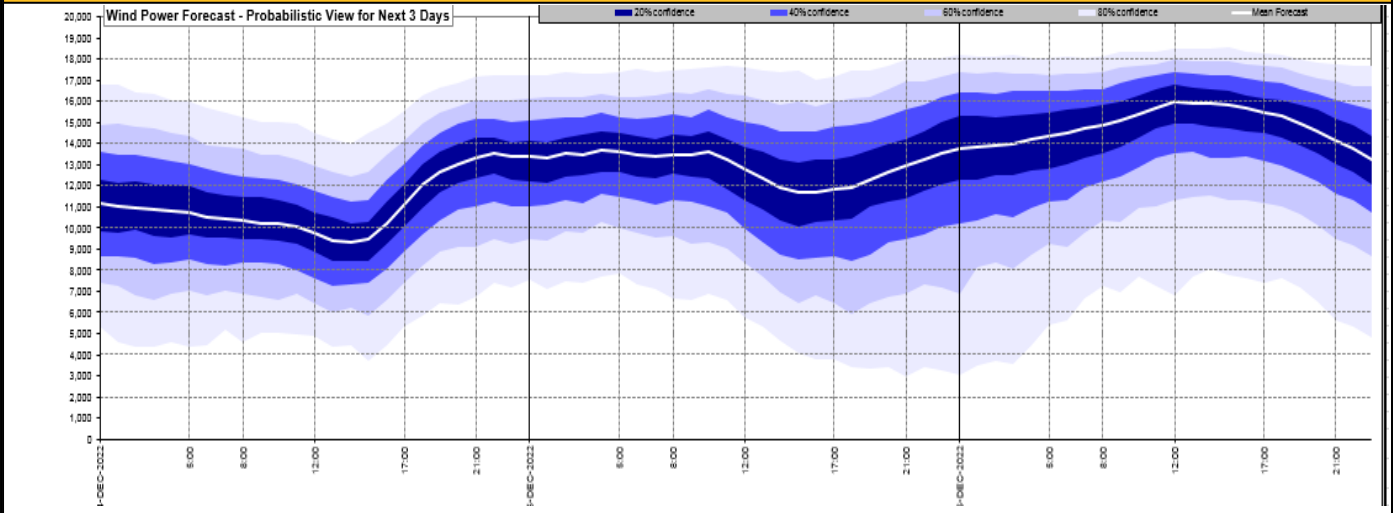
Yesterday's Market Summary

Cash Out Price (Max)	£275.00 (SP 14)
Cash Out Price (Min)	£112.30 (SP 4&5)
Peak Demand Yesterday	43,6671 MW
Minimum Demand	18,700 MW

Interconnector Net Transfer Capacity (MWs)

Today	Import	Export	Remarks
Netherlands (BritNed)	1100	1133	Fully Available
France (IFA2)	1014	1014	Fully Available
Belgium (Nemo)	1000	1025	Fully Available
Ireland (EWIC)	500	530	Fully Available
France (ElecLink)	1014	1014	Fully Available
France (IFA)	1000	1000	Partially available
Northern Ireland (MOYLE)	500	500	Fully Available
Norway (NSL)	1400	1400	Fully Available

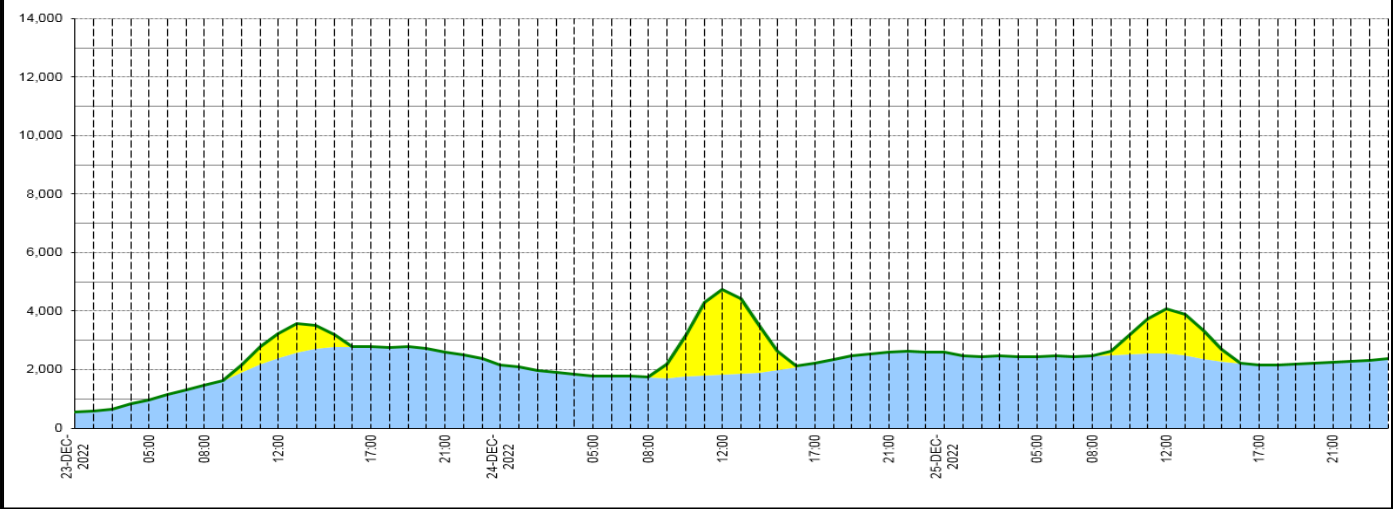
Wind Power Forecast



Expected embedded generation (MWs)

Embedded Generation Forecast

	23-DEC-2022					24-DEC-2022					25-DEC-2022						
	05:00	08:00	12:00	17:00	21:00	00:00	05:00	08:00	12:00	17:00	21:00	00:00	05:00	08:00	12:00	17:00	21:00
Solar (MW)	0	0	831	0	0	0	0	0	2909	0	0	0	0	0	1511	0	0
Wind (MW)	966	1450	2407	2791	2594	2172	1791	1740	1843	2219	2614	2595	2436	2467	2565	2173	2237
STOR (MW)	0	0	0	0	0	0	0	0	0	0	0	0	0	0	0	0	0
Total (MW)	966	1450	3238	2791	2594	2172	1791	1740	4752	2219	2614	2595	2436	2467	4076	2173	2237



Weather	Source	Commentary
Latest forecast (Summary)	Met Office SEPA Natural Resources Wales	<p>Today: Rain and hill snow clearing from northern Scotland this morning. Elsewhere, a mixture of sunny spells and showers; the showers heaviest and most frequent in the west with some hail and thunder. Windy and mostly mild.</p> <p>Tonight: Mild and windy with clear spells and showers; these most frequent in the west and sometimes heavy. Some more persistent rain perhaps affecting southern and southeast England for a time.</p>
General Weather Concerns e.g. wind, rain, snow, flooding, GB Weather Warnings	Met Office Weather Warnings SEPA Natural Resources Wales	<p>UK Weather Warnings Yellow warning of snow and ice Areas affected: Central, Tayside & Fife Grampian Highlands & Eilean Siar Strathclyde</p> <p>Starts: 21:00 GMT on Sun 25 December Ends: 18:00 GMT on Mon 26 December Frequent blustery snow showers are likely to cause some travel disruption to higher routes.</p> <p>- Some roads and railways likely to be affected with longer journey times by road, bus</p>

Weather	Source	Commentary
		and train services - A very small chance of interruptions to power supplies. - Probably some icy patches on some untreated roads, pavements and cycle paths
		Flood Warnings 2 flood warnings and 66 flood alerts issued for England. 0 flood warnings and 0 flood alerts issued for Scotland. 0 flood warnings and 2 flood alerts issued for Wales.

Contains public sector information licensed under the Open Government Licence v1.0

Further Information	
BM Reports	https://www.bmreports.com
System Balancing Reports	https://www.nationalgrideso.com/balancing-data/system-balancing-reports
Forecast Volumes and Costs	https://www.nationalgrideso.com/balancing-data/forecast-volumes-and-costs
NGESO Insights	https://www.nationalgrideso.com/insights