

National Electricity Transmission System Status Report



nationalgridESO

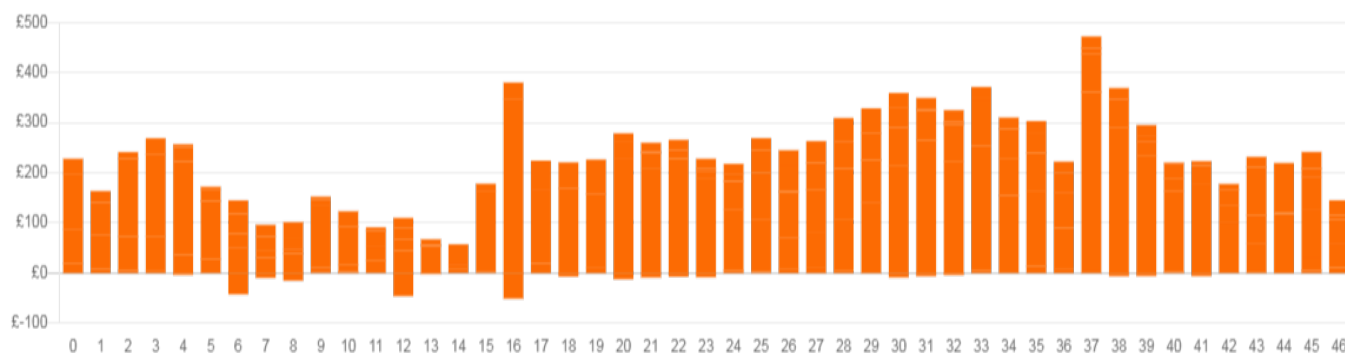
National Electricity Transmission System Status Report
Monday 19 December 2022

Today's High Level Risk Status Forecast for the next 24h			
General Status		Voltage	
Demand		System Inertia	
System Margins		Weather	
Generation		Transmission	
Active Constraints			
System Warning			

Today's Minimum De-Rated Margin	17,931 (SP 36)	
Current BMU Largest Loss Risk	Generation	1400 MW
	Demand	950 MW

Balancing Costs

Last 24 hours' BM spend Total: £10753k



Yesterday's Market Summary

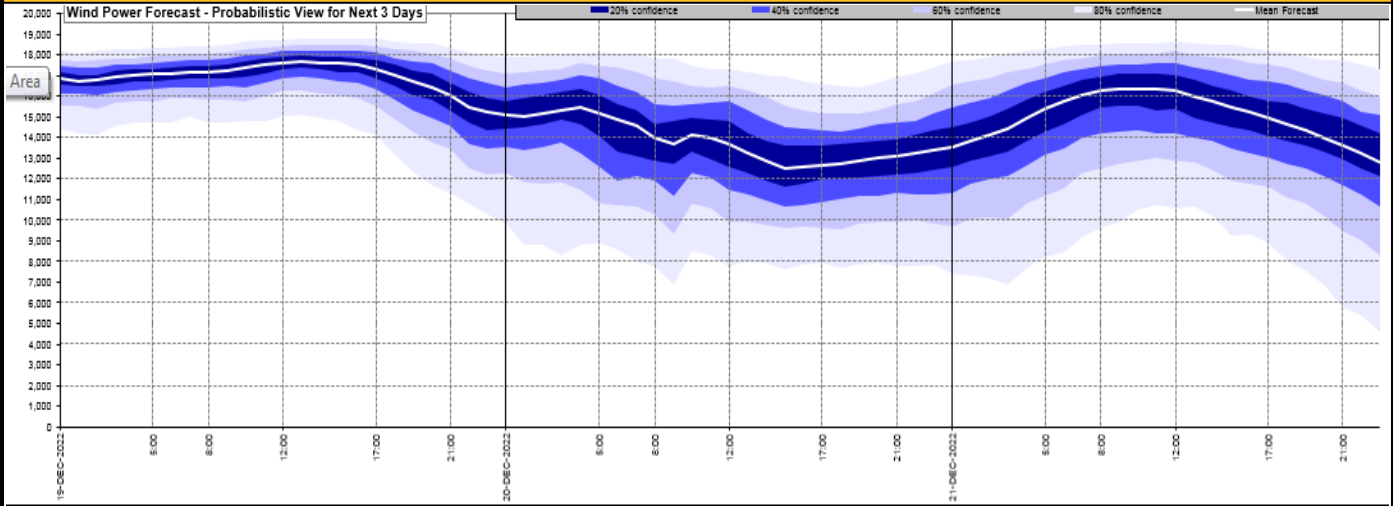
Cash Out Price (Max)	£374 (SP 18)
Cash Out Price (Min)	£0.00 (SP 46)
Peak Demand Yesterday	40,352 MW
Minimum Demand	24,202 MW

Interconnector

Net Transfer Capacity (MWs)

Today	Import	Export	Remarks
Netherlands (BritNed)	1100	1133	Fully Available
France (IFA2)	1014	1014	Fully Available
Belgium (Nemo)	1000	1025	Fully Available
Ireland (EWIC)	500	530	Fully Available
France (ElecLink)	1014	1014	Fully Available
France (IFA)	1000	1000	Partially available
Northern Ireland (MOYLE)	500	500	Fully Available
Norway (NSL)	1400	1400	Fully Available

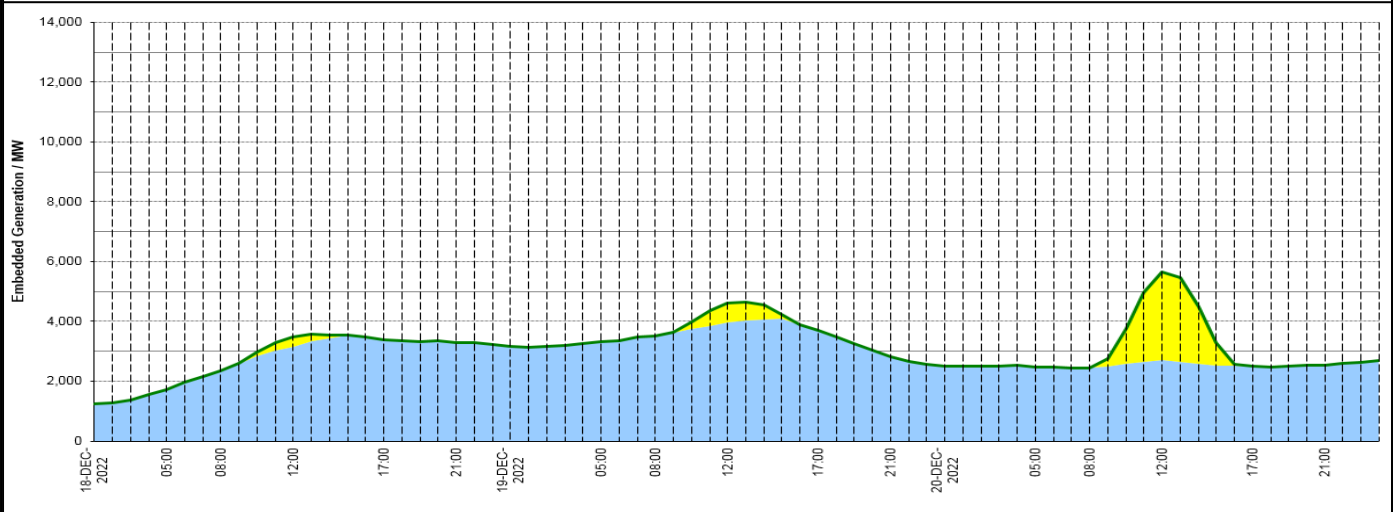
Wind Power Forecast



Expected embedded generation (MWs)

Embedded Generation Forecast

	18-DEC-2022					19-DEC-2022					20-DEC-2022						
	05:00	08:00	12:00	17:00	21:00	00:00	05:00	08:00	12:00	17:00	21:00	00:00	05:00	08:00	12:00	17:00	21:00
Solar (MW)	0	0	339	0	0	0	0	0	660	0	0	0	0	0	2949	0	0
Wind (MW)	1711	2358	3156	3391	3283	3179	3317	3524	3959	3703	2814	2492	2488	2442	2699	2496	2547
STOR (MW)	0	0	0	0	0	0	0	0	0	0	0	0	0	0	0	0	0
Total (MW)	1711	2358	3495	3391	3283	3179	3317	3524	4619	3703	2814	2492	2488	2442	5648	2496	2547



Weather	Source	Commentary
Latest forecast (Summary)	Met Office SEPA Natural Resources Wales	Today: Very mild for all, in complete contrast to recent days. Mostly cloudy with bands of rain and drizzle moving northeastwards, heavy at times in some southern and western parts. Windy, with gales on coasts and hills, especially in the southwest. Tonight: Rain, some heavy, in southern and eastern parts of England where it will be mild. Clearer and slightly chillier elsewhere but with scattered showers in the west, mainly northwest Scotland.
General Weather Concerns e.g. wind, rain, snow, flooding, GB Weather Warnings	Met Office Weather Warnings SEPA Natural Resources Wales	UK Weather Warnings Yellow warning of rain Areas affected: London & South East England South West England Wales Flood Warnings 10 flood warnings and 38 flood alerts are currently in force for England. No flood warnings are currently in force for Scotland. No flood warnings and 6 flood alerts are currently in force for Wales.

Contains public sector information licensed under the Open Government Licence v1.0

Further Information	
BM Reports	https://www.bmreports.com
System Balancing Reports	https://www.nationalgrideso.com/balancing-data/system-balancing-reports
Forecast Volumes and Costs	https://www.nationalgrideso.com/balancing-data/forecast-volumes-and-costs
NGESO Insights	https://www.nationalgrideso.com/insights