

National Electricity Transmission System Status Report

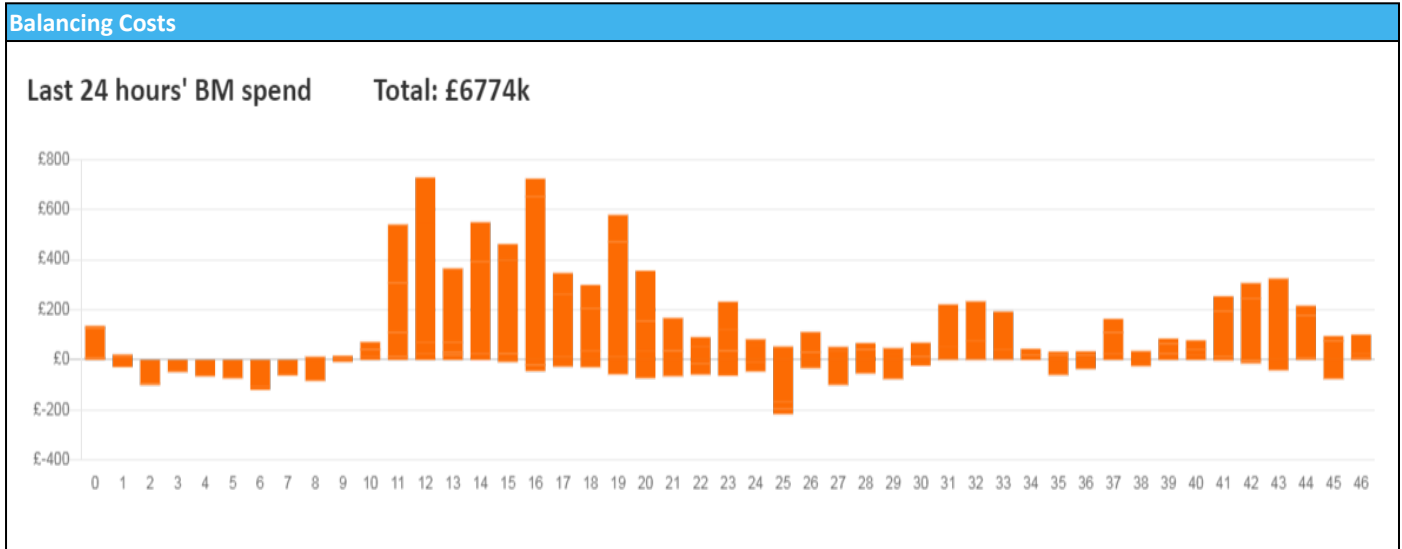


nationalgridESO

National Electricity Transmission System Status Report
Saturday 17 December 2022

Today's High Level Risk Status Forecast for the next 24h			
General Status		Voltage	
Demand		System Inertia	
System Margins		Weather	
Generation		Transmission	
Active Constraints			
System Warning			

Today's Minimum De-Rated Margin	10,625 (SP 35)	
Current BMU Largest Loss Risk	Generation	1400 MW
	Demand	950 MW



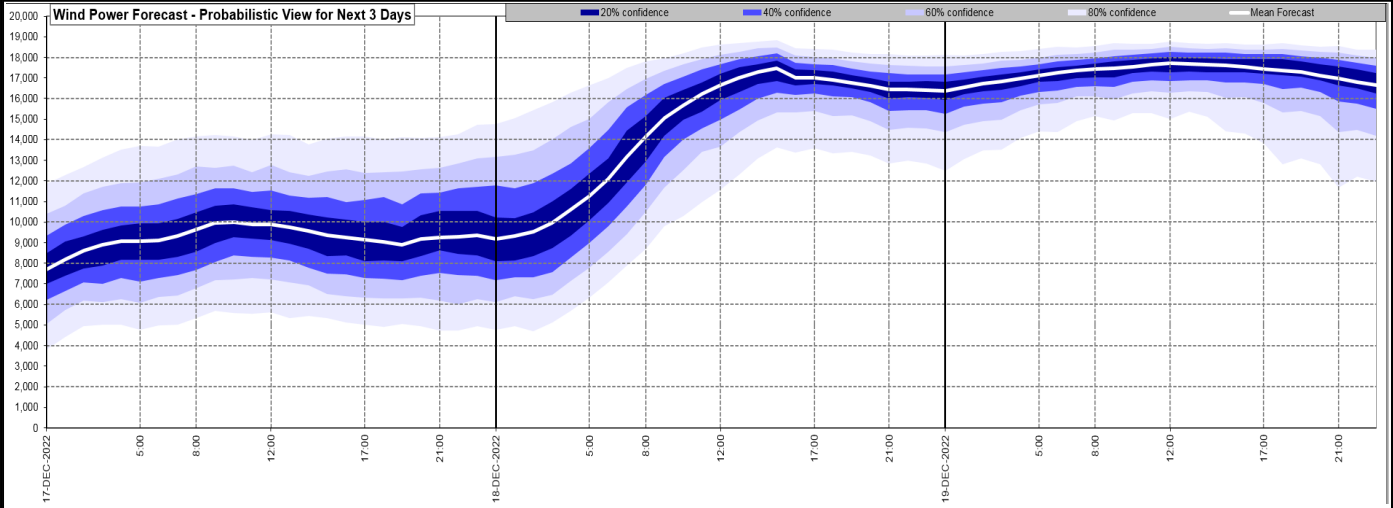
Yesterday's Market Summary

Cash Out Price (Max)	£698 (SP 18)
Cash Out Price (Min)	£201.10 (SP 47)
Peak Demand Yesterday	44,283 MW
Minimum Demand	27,948 MW

Interconnector Net Transfer Capacity (MWs)

Today	Import	Export	Remarks
Netherlands (BritNed)	1100	1133	Fully Available
France (IFA2)	1014	1014	Fully Available
Belgium (Nemo)	1000	1025	Fully Available
Ireland (EWIC)	500	530	Fully Available
France (ElecLink)	1014	1014	Fully Available
France (IFA)	1000	1000	Partially available
Northern Ireland (MOYLE)	500	500	Fully Available
Norway (NSL)	1400	1400	Fully Available

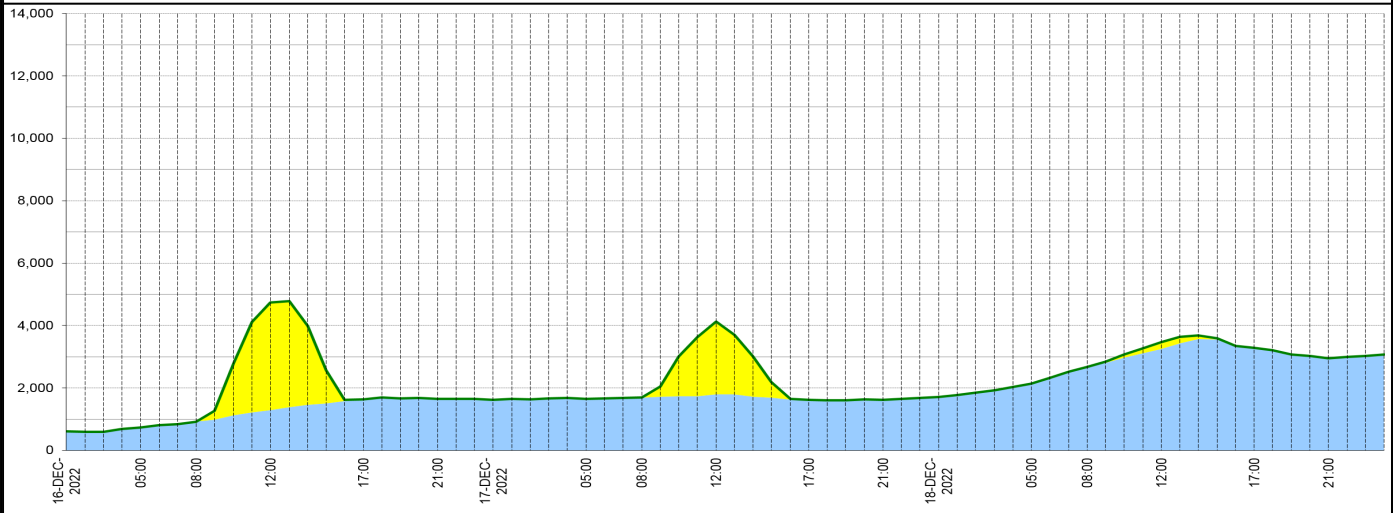
Wind Power Forecast



Expected embedded generation (MWs)

Embedded Generation Forecast

	16-DEC-2022				17-DEC-2022				18-DEC-2022								
	05:00	08:00	12:00	17:00	21:00	00:00	05:00	08:00	12:00	17:00	21:00	00:00	05:00	08:00	12:00	17:00	21:00
Solar (MW)	0	0	3450	0	0	0	0	0	2337	0	0	0	0	0	224	0	0
Wind (MW)	735	922	1295	1634	1653	1621	1654	1695	1794	1625	1622	1704	2144	2675	3243	3280	2955
STOR (MW)	0	0	0	0	0	0	0	0	0	0	0	0	0	0	0	0	0
Total (MW)	735	922	4745	1634	1653	1621	1654	1695	4131	1625	1622	1704	2144	2675	3467	3280	2955



Weather	Source	Commentary
Latest forecast (Summary)	Met Office SEPA Natural Resources Wales	<p>Today: Bands of cloud with patchy rain, sleet and hill snow across northern, western and some central parts. Mainly dry and bright in the south and east. Becoming breezier but generally a little less cold than many recent days.</p> <p>Tonight: Areas of cloud in the northwest with bands of showers tracking northwards. Clearer conditions elsewhere with another sharp frost. Rain moving into the far southwest before dawn.</p>
General Weather Concerns e.g. wind, rain, snow, flooding, GB Weather Warnings	Met Office Weather Warnings SEPA Natural Resources Wales	<p>UK Weather Warnings Yellow warning of ice Areas affected: Central, Tayside & Fife Grampian Highlands & Eilean Siar SW Scotland, Lothian Borders Strathclyde ACTIVE Started at: 21:00 GMT on Fri 16 December Ends: 11:00 GMT on Sat 17 December Earlier snowfall will freeze, leading to widespread icy conditions overnight and early Saturday and likely continued travel disruption. - Icy stretches on many untreated roads, pavements and cycle paths making accidents and injuries more likely - Frozen snow and slush might make for very difficult conditions on some less busy roads, pavements and cycle paths</p>

Weather	Source	Commentary
		<p>Yellow warning of ice</p> <p>Areas affected: East Midlands North East England North West England SW Scotland, Lothian Borders Strathclyde Wales West Midlands Yorkshire & Humber</p> <p>ACTIVE</p> <p>Started at: 21:00 GMT on Fri 16 December Ends: 10:30 GMT on Sat 17 December</p> <p>Showery rain and sleet, with snow over some hills, will lead to an ice risk tonight, and possible travel disruption.</p> <ul style="list-style-type: none"> - Probably some icy patches on some untreated roads, pavements and cycle paths, leading to increased chance of accidents and injuries - A few higher level routes seeing snowfall, making for longer journey times <p>Flood Warnings</p> <p>No flood warnings are currently in force for England.</p> <p>No flood warnings are currently in force for Scotland.</p> <p>No flood warnings are currently in force for Wales.</p>

Contains public sector information licensed under the Open Government Licence v1.0

Further Information	
BM Reports	https://www.bmreports.com
System Balancing Reports	https://www.nationalgrideso.com/balancing-data/system-balancing-reports
Forecast Volumes and Costs	https://www.nationalgrideso.com/balancing-data/forecast-volumes-and-costs
NGESO Insights	https://www.nationalgrideso.com/insights