

National Electricity Transmission System Status Report



nationalgridESO

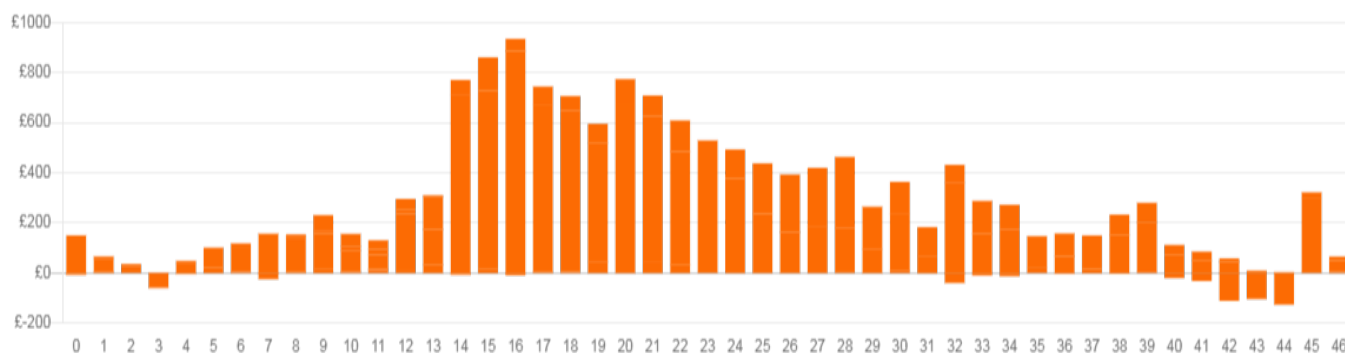
National Electricity Transmission System Status Report
Friday 16 December 2022

Today's High Level Risk Status Forecast for the next 24h			
General Status		Voltage	
Demand		System Inertia	
System Margins		Weather	
Generation		Transmission	
Active Constraints			
System Warning			

Today's Minimum De-Rated Margin	-326 (SP 20)	
Current BMU Largest Loss Risk	Generation	1400 MW
	Demand	950 MW

Balancing Costs

Last 24 hours' BM spend Total: £14251k



Yesterday's Market Summary

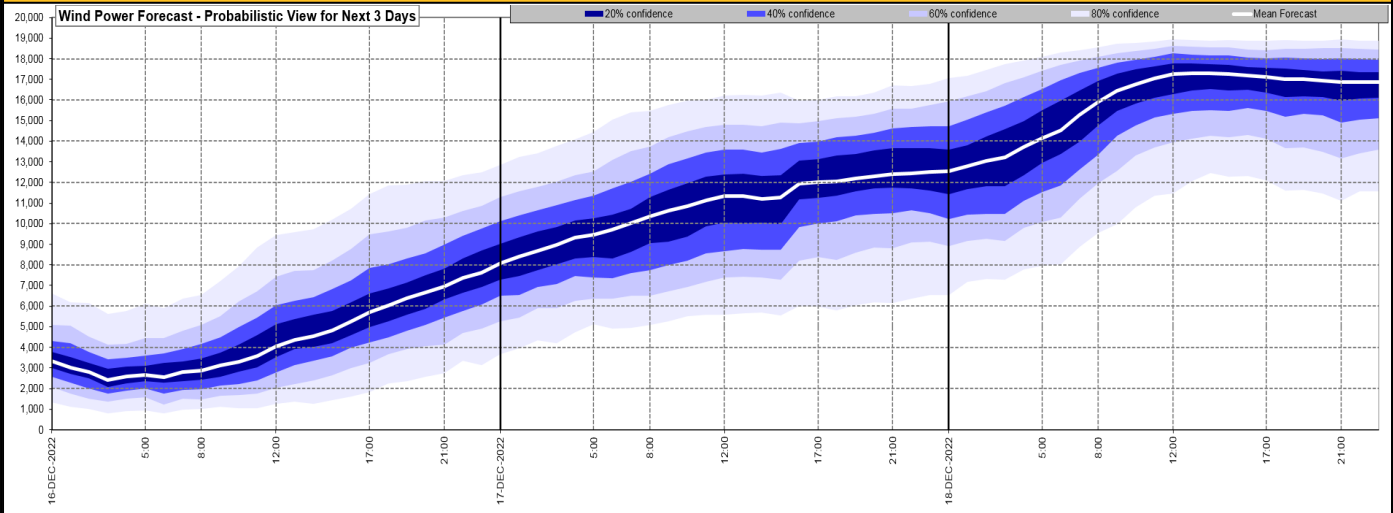
Cash Out Price (Max)	£699.03 (SP 34)
Cash Out Price (Min)	£221 (SP 5)
Peak Demand Yesterday	47,019 MW
Minimum Demand	27,374 MW

Interconnector

Net Transfer Capacity (MWs)

Today	Import	Export	Remarks
Netherlands (BritNed)	1100	1133	Fully Available
France (IFA2)	1014	1014	Fully Available
Belgium (Nemo)	1000	1025	Fully Available
Ireland (EWIC)	500	530	Fully Available
France (ElecLink)	1014	1014	Fully Available
France (IFA)	1000	1000	Partially available
Northern Ireland (MOYLE)	500	500	Fully Available
Norway (NSL)	1400	1400	Fully Available

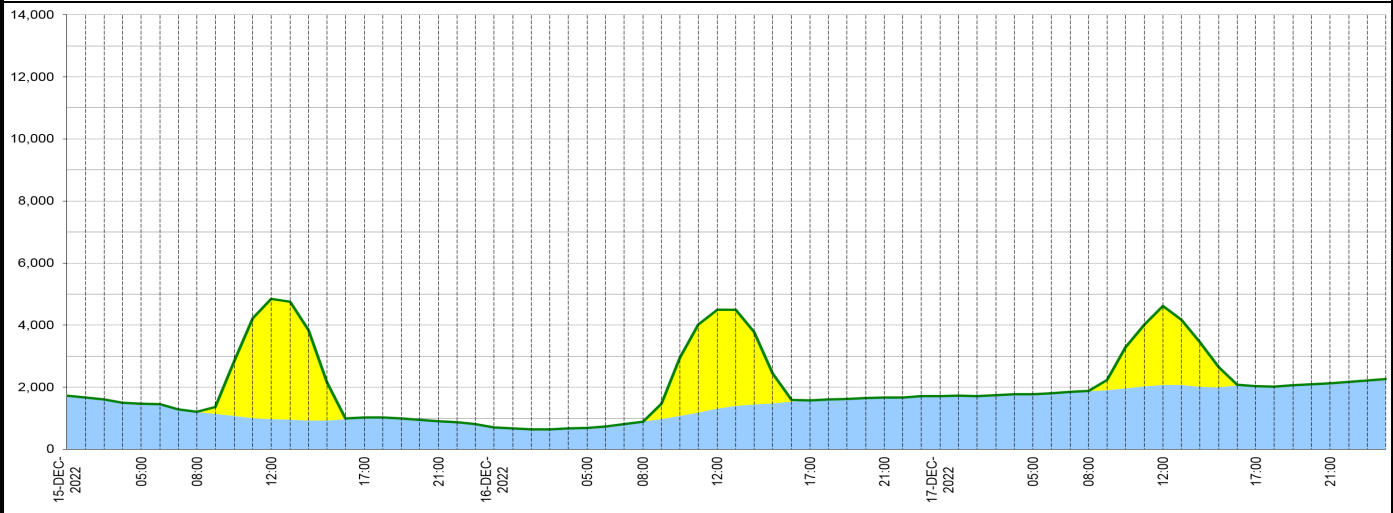
Wind Power Forecast



Expected embedded generation (MWs)

Embedded Generation Forecast

	15-DEC-2022				16-DEC-2022				17-DEC-2022								
	05:00	08:00	12:00	17:00	21:00	00:00	05:00	08:00	12:00	17:00	21:00	00:00	05:00	08:00	12:00	17:00	21:00
Solar (MW)	0	0	3876	0	0	0	0	0	3195	0	0	0	0	0	2535	0	0
Wind (MW)	1466	1206	975	1024	903	695	694	888	1300	1575	1667	1704	1779	1875	2076	2040	2123
STOR (MW)	0	0	0	0	0	0	0	0	0	0	0	0	0	0	0	0	0
Total (MW)	1466	1206	4851	1024	903	695	694	888	4495	1575	1667	1704	1779	1875	4611	2040	2123



Weather	Source	Commentary
Latest forecast (Summary)	Met Office SEPA Natural Resources Wales	<p>Today: Most of England and Wales dry with plenty of sunshine after a hard frost. Outbreaks of rain, sleet and snow moving eastwards across Scotland and Northern Ireland; the snow mostly confined to hills later. Remaining cold.</p> <p>Tonight: Occasional rain, with snow on hills, affecting some northern and western parts. Dry with clear spells in the south and east, allowing another sharp frost and some freezing fog patches.</p>
General Weather Concerns e.g. wind, rain, snow, flooding, GB Weather Warnings	Met Office Weather Warnings SEPA Natural Resources Wales	<p>UK Weather Warnings Yellow warning of snow and ice Areas affected: Orkney & Shetland ACTIVE Started at: 00:00 GMT on Fri 16 December Ends: 10:00 GMT on Fri 16 December Snow showers and icy surfaces will bring some travel disruption - Some roads likely to be affected with longer journey times, perhaps not helping ongoing recovery work in Shetland - Some injuries from slips and falls on icy surfaces - Probably some icy patches on some untreated roads, pavements and cycle paths</p> <p>Yellow warning of snow and ice Areas affected: Central, Tayside & Fife Grampian Highlands & Eilean Siar SW</p>

Weather	Source	Commentary
		<p>Scotland, Lothian Borders Strathclyde ACTIVE Started at: 03:48 GMT on Fri 16 December Ends: 21:00 GMT on Fri 16 December Outbreaks of snow and icy surfaces may bring travel disruption.</p> <ul style="list-style-type: none"> - There is a chance that bus and train services may be delayed or cancelled, with some road closures and longer journey times, especially during the morning peak travel period - There is a fair chance of some travel delays on roads, plus a smaller chance of stranded vehicles and passengers in some areas, particularly over high ground during the morning - There is a small chance that power cuts will occur and other services, such as mobile phone coverage, may be affected - A chance that untreated pavements and cycle paths are icy , increasing the likelihood of accidents and injuries <p>Amber warning of snow Areas affected: Central, Tayside & Fife SW Scotland, Lothian Borders Strathclyde Starts: 05:00 GMT on Fri 16 December Ends: 12:00 GMT on Fri 16 December Heavy snow causing disruption on Friday morning.</p> <ul style="list-style-type: none"> - Travel delays on roads are likely, stranding some vehicles and passengers - Some delays and cancellations to rail and air travel are likely - There is a good chance that some rural communities could become cut off - Power cuts are likely and other services, such as mobile phone coverage, may be affected <p>Flood Warnings No flood warnings are currently in force for England.</p> <p>No flood warnings are currently in force for Scotland.</p> <p>No flood warnings are currently in force for Wales.</p>

Contains public sector information licensed under the Open Government Licence v1.0

Further Information	
BM Reports	https://www.bmreports.com
System Balancing Reports	https://www.nationalgrideso.com/balancing-data/system-balancing-reports
Forecast Volumes and Costs	https://www.nationalgrideso.com/balancing-data/forecast-volumes-and-costs
NGESO Insights	https://www.nationalgrideso.com/insights