

**National Electricity  
Transmission System Status Report**



national**grid**ESO

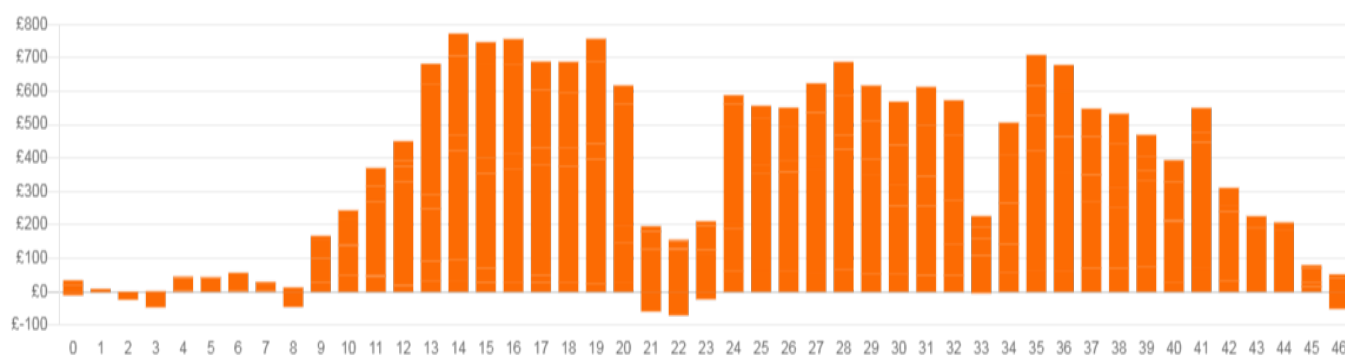
National Electricity Transmission System Status Report  
Thursday 15 December 2022

Today's High Level Risk Status Forecast for the next 24h			
General Status		Voltage	
Demand		System Inertia	
System Margins		Weather	
Generation		Transmission	
Active Constraints			
<a href="#">System Warning</a>			

<a href="#">Today's Minimum De-Rated Margin</a>	420 (SP 37)	
Current BMU Largest Loss Risk	Generation	1400 MW
	Demand	950 MW

Balancing Costs

Last 24 hours' BM spend Total: £18266k



Yesterday's Market Summary

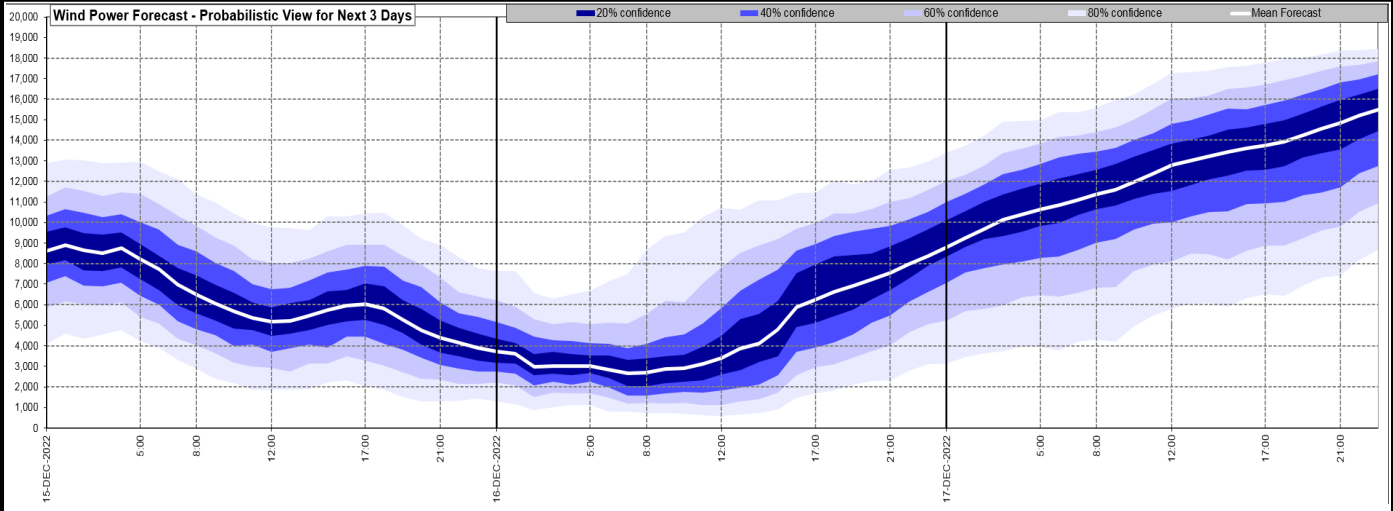
<a href="#">Cash Out Price (Max)</a>	£565 (SP 14)
<a href="#">Cash Out Price (Min)</a>	£220 (SP 1)
<a href="#">Peak Demand Yesterday</a>	46,443 MW
Minimum Demand	26,423 MW

Interconnector

Net Transfer Capacity (MWs)

Today	Import	Export	Remarks
Netherlands (BritNed)	1100	1133	Fully Available
France (IFA2)	1014	1014	Fully Available
Belgium (Nemo)	1000	1025	Fully Available
Ireland (EWIC)	500	530	Fully Available
France (ElecLink)	1014	1014	Fully Available
France (IFA)	1000	1000	Partially available
Northern Ireland (MOYLE)	500	500	Fully Available
Norway (NSL)	1400	1400	Fully Available

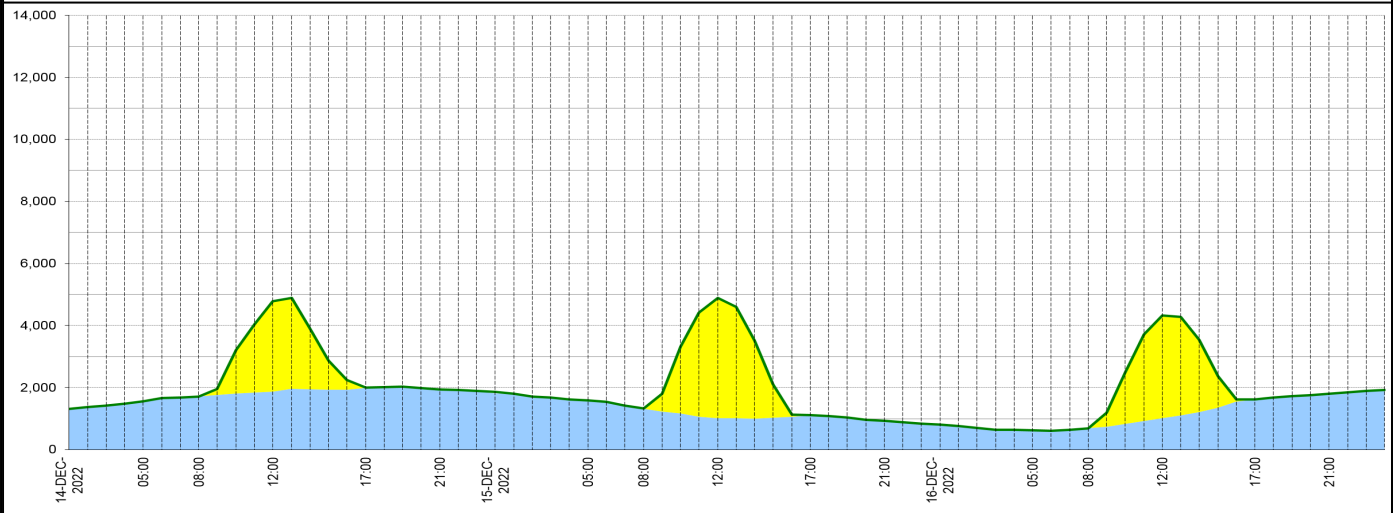
**Wind Power Forecast**



**Expected embedded generation (MWs)**

**Embedded Generation Forecast**

	14-DEC-2022					15-DEC-2022					16-DEC-2022						
	05:00	08:00	12:00	17:00	21:00	00:00	05:00	08:00	12:00	17:00	21:00	00:00	05:00	08:00	12:00	17:00	21:00
Solar (MW)	0	0	2901	0	0	0	0	0	3874	0	0	0	0	0	3318	0	0
Wind (MW)	1561	1712	1876	2001	1946	1818	1595	1322	1018	1108	934	812	629	692	1010	1618	1803
STOR (MW)	0	0	0	0	0	0	0	0	0	0	0	0	0	0	0	0	0
<b>Total (MW)</b>	<b>1561</b>	<b>1712</b>	<b>4777</b>	<b>2001</b>	<b>1946</b>	<b>1870</b>	<b>1595</b>	<b>1322</b>	<b>4892</b>	<b>1108</b>	<b>934</b>	<b>812</b>	<b>629</b>	<b>692</b>	<b>4328</b>	<b>1618</b>	<b>1803</b>



Weather	Source	Commentary
Latest forecast (Summary)	<a href="#">Met Office</a> <a href="#">SEPA</a> <a href="#">Natural Resources Wales</a>	<p><b>Today:</b> Further wintry showers will feed inland across Northern Ireland, northern Scotland and North Sea coast. Elsewhere, dry with long spells of sunshine after a widespread, locally severe frost. Very cold.</p> <p><b>Tonight:</b> Wintry showers continuing across northern Scotland. Clear spells and severe frost elsewhere with patchy freezing fog developing. Outbreaks of sleet and snow developing in the northwest later.</p>
General Weather Concerns e.g. wind, rain, snow, flooding, GB Weather Warnings	<a href="#">Met Office</a> <a href="#">Weather Warnings</a> <a href="#">SEPA</a> <a href="#">Natural Resources Wales</a>	<p><b>UK Weather Warnings</b> Yellow warning of snow and ice Areas affected: Grampian   Highlands &amp; Eilean Siar   North East England   Orkney &amp; Shetland   SW Scotland, Lothian Borders   Yorkshire &amp; Humber ACTIVE Started at: 00:00 GMT on Tue 13 December Ends: 23:59 GMT on Thu 15 December Snow showers and icy surfaces will bring some travel disruption. - Some roads and railways likely to be affected with longer journey times by road, bus and train services - Some injuries from slips and falls on icy surfaces - Probably some icy patches on some untreated roads, pavements and cycle paths</p> <p>Yellow warning of ice</p>

Weather	Source	Commentary
		<p>Areas affected: East Midlands   East of England   Yorkshire &amp; Humber ACTIVE Started at: 15:00 GMT on Wed 14 December Ends: 12:00 GMT on Thu 15 December Showers of sleet and snow will lead to some slippery surfaces. - Some injuries from slips and falls on icy surfaces - Probably some icy patches on some untreated roads, pavements and cycle paths</p> <p>Yellow warning of ice Areas affected: Northern Ireland ACTIVE Started at: 15:00 GMT on Wed 14 December Ends: 11:00 GMT on Thu 15 December Wintry showers will lead to ice and slippery surfaces. - Some injuries from slips and falls on icy surfaces - Probably some icy patches on some untreated roads, pavements and cycle paths</p> <p><b>Flood Warnings</b> 1 flood warning issued for England.  No flood warnings are currently in force for Scotland.  No flood warnings are currently in force for Wales.</p>

*Contains public sector information licensed under the Open Government Licence v1.0*

Further Information	
BM Reports	<a href="https://www.bmreports.com">https://www.bmreports.com</a>
System Balancing Reports	<a href="https://www.nationalgrideso.com/balancing-data/system-balancing-reports">https://www.nationalgrideso.com/balancing-data/system-balancing-reports</a>
Forecast Volumes and Costs	<a href="https://www.nationalgrideso.com/balancing-data/forecast-volumes-and-costs">https://www.nationalgrideso.com/balancing-data/forecast-volumes-and-costs</a>
NGESO Insights	<a href="https://www.nationalgrideso.com/insights">https://www.nationalgrideso.com/insights</a>