

National Electricity Transmission System Status Report

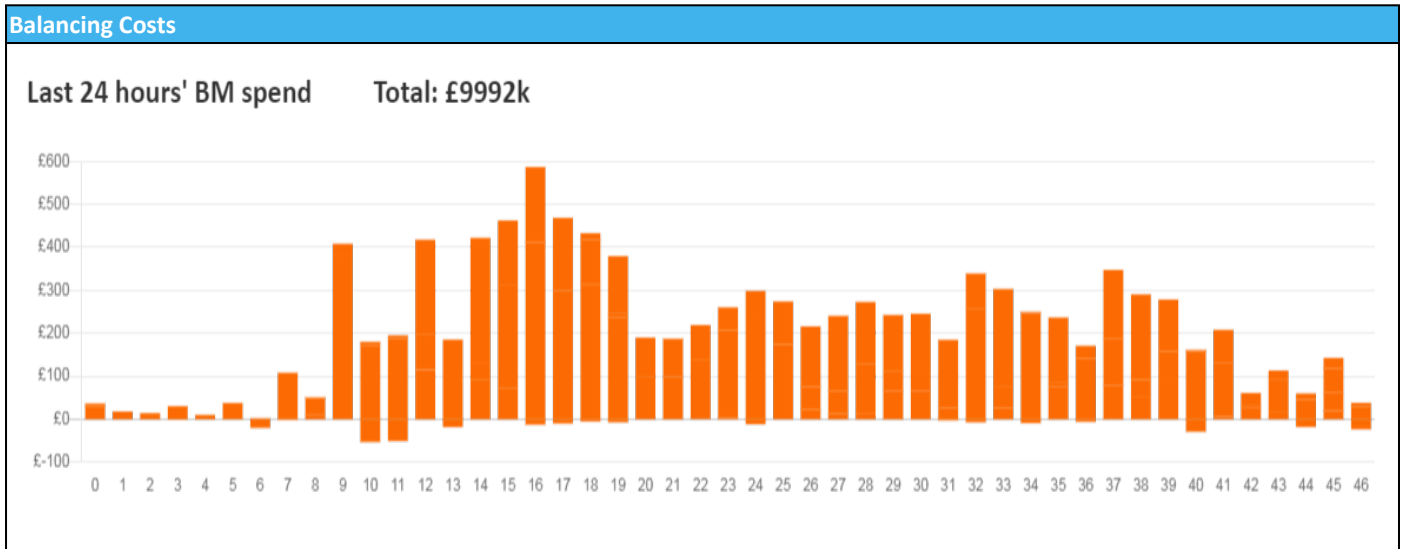


nationalgridESO

**National Electricity Transmission System Status Report
Wednesday 14 December 2022**

Today's High Level Risk Status Forecast for the next 24h			
General Status		Voltage	
Demand		System Inertia	
System Margins		Weather	
Generation		Transmission	
Active Constraints			
System Warning			

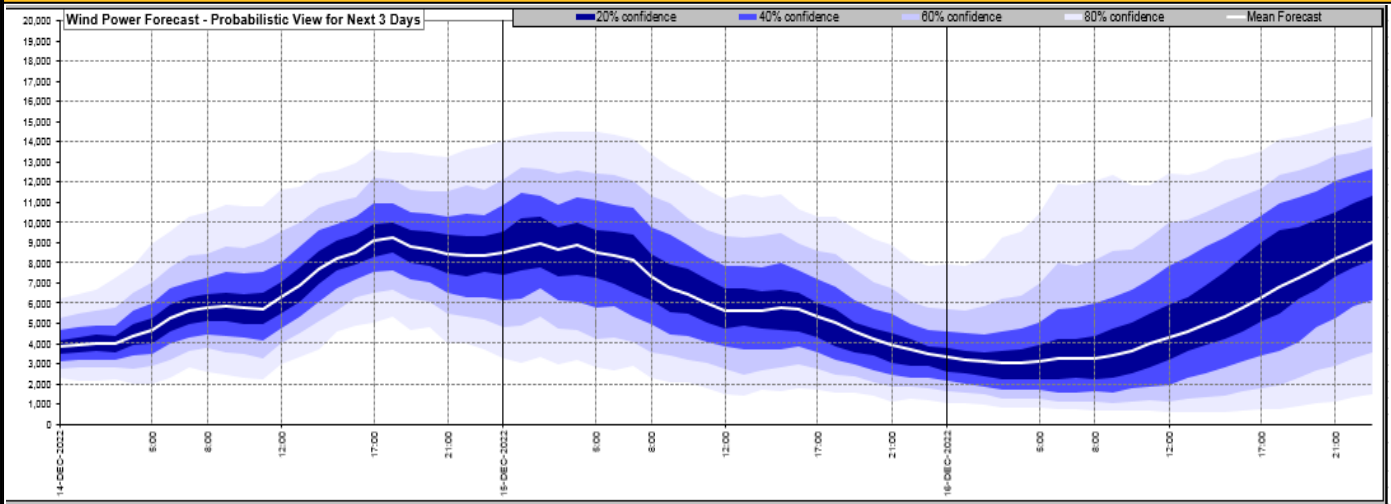
Today's Minimum De-Rated Margin	2051 (SP 35)	
Current BMU Largest Loss Risk	Generation	1400 MW
	Demand	950 MW



Yesterday's Market Summary	
Cash Out Price (Max)	£875.00 (SP11, SP18, SP19, SP20 & SP21)
Cash Out Price (Min)	£235.00 (SP48)
Peak Demand Yesterday	45,915 MW
Minimum Demand	26,340 MW

Interconnector Net Transfer Capacity (MWs)			
Today	Import	Export	Remarks
Netherlands (BritNed)	1100	1133	Fully Available
France (IFA2)	1014	1014	Fully Available
Belgium (Nemo)	1000	1025	Fully Available
Ireland (EWIC)	500	530	Fully Available
France (ElecLink)	1014	1014	Fully Available
France (IFA)	1000	1000	Partially available
Northern Ireland (MOYLE)	500	500	Fully Available
Norway (NSL)	1400	1400	Fully Available

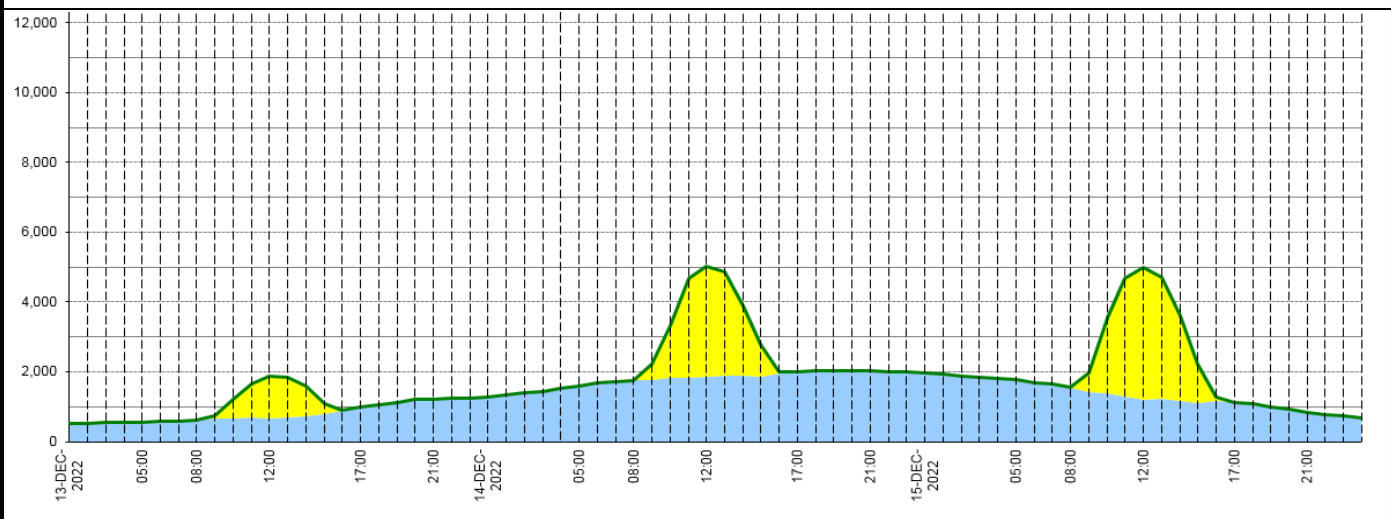
Wind Power Forecast



Expected embedded generation (MWs)

Embedded Generation Forecast

	13-DEC-2022					14-DEC-2022					15-DEC-2022						
	05:00	08:00	12:00	17:00	21:00	00:00	05:00	08:00	12:00	17:00	21:00	00:00	05:00	08:00	12:00	17:00	21:00
Solar (MW)	0	0	1194	0	0	0	0	0	3154	0	0	0	0	17	3793	0	0
Wind (MW)	541	627	675	1005	1227	1292	1582	1752	1856	2002	2027	1979	1771	1535	1210	1121	846
STOR (MW)	0	0	0	0	0	0	0	0	0	0	0	0	0	0	0	0	0
Total (MW)	541	627	1869	1005	1227	1292	1582	1752	5010	2002	2027	1979	1771	1552	5003	1121	846



Weather	Source	Commentary
Latest forecast (Summary)	Met Office SEPA Natural Resources Wales	<p>Today: Overnight snow in the far southwest clearing by dawn. A few freezing fog patches in central and southern areas this morning. Otherwise, sunny spells with wintry showers affecting northern and later eastern coasts. Windy in the far north. Cold.</p> <p>Tonight: Further wintry showers affecting Northern Ireland, northern Scotland and coastal eastern England. Elsewhere, clear spells with isolated freezing fog patches developing. A widespread frost, severe over snow cover.</p>
General Weather Concerns e.g. wind, rain, snow, flooding, GB Weather Warnings	Met Office Weather Warnings SEPA Natural Resources Wales	<p>UK Weather Warnings Yellow warning of snow and ice: Areas affected: Grampian Highlands & Eilean Siar North East England Orkney & Shetland SW Scotland, Lothian Borders Yorkshire & Humber ACTIVE Started at: 00:00 GMT on Tue 13 December Ends: 12:00 GMT on Fri 16 December Snow showers and icy surfaces will bring some travel disruption.</p> <p>Yellow warning of ice: Areas affected: Northern Ireland ACTIVE</p>

Weather	Source	Commentary
		<p>Started at: 12:00 GMT on Tue 13 December Ends: 12:00 GMT on Wed 14 December A few showers of sleet and snow will bring the risk of some slippery surfaces.</p> <p>Yellow warning of ice: Areas affected: East Midlands Yorkshire & Humber ACTIVE Started at: 15:00 GMT on Tue 13 December Ends: 12:00 GMT on Wed 14 December A few sleet and snow showers along the coastal strip of eastern England will bring a risk of some slippery surfaces.</p> <p>Yellow warning of ice: Areas affected: South West England ACTIVE Started at: 18:00 GMT on Tue 13 December Ends: 10:00 GMT on Wed 14 December Overnight sleet and snow leading to some icy patches this morning.</p> <p>Yellow warning of wind: Areas affected: Orkney & Shetland Starts: 07:00 GMT on Wed 14 December Ends: 14:00 GMT on Wed 14 December A period of gusty northerly winds on Wednesday with blustery wintry showers continuing.</p> <hr/> <p>Flood Warnings 2 flood warnings issued for England.</p> <p>No flood warnings are currently in force for Scotland.</p> <p>No flood warnings are currently in force for Wales.</p>

Contains public sector information licensed under the Open Government Licence v1.0

Further Information	
BM Reports	https://www.bmreports.com
System Balancing Reports	https://www.nationalgrideso.com/balancing-data/system-balancing-reports
Forecast Volumes and Costs	https://www.nationalgrideso.com/balancing-data/forecast-volumes-and-costs
NGESO Insights	https://www.nationalgrideso.com/insights