

National Electricity Transmission System Status Report

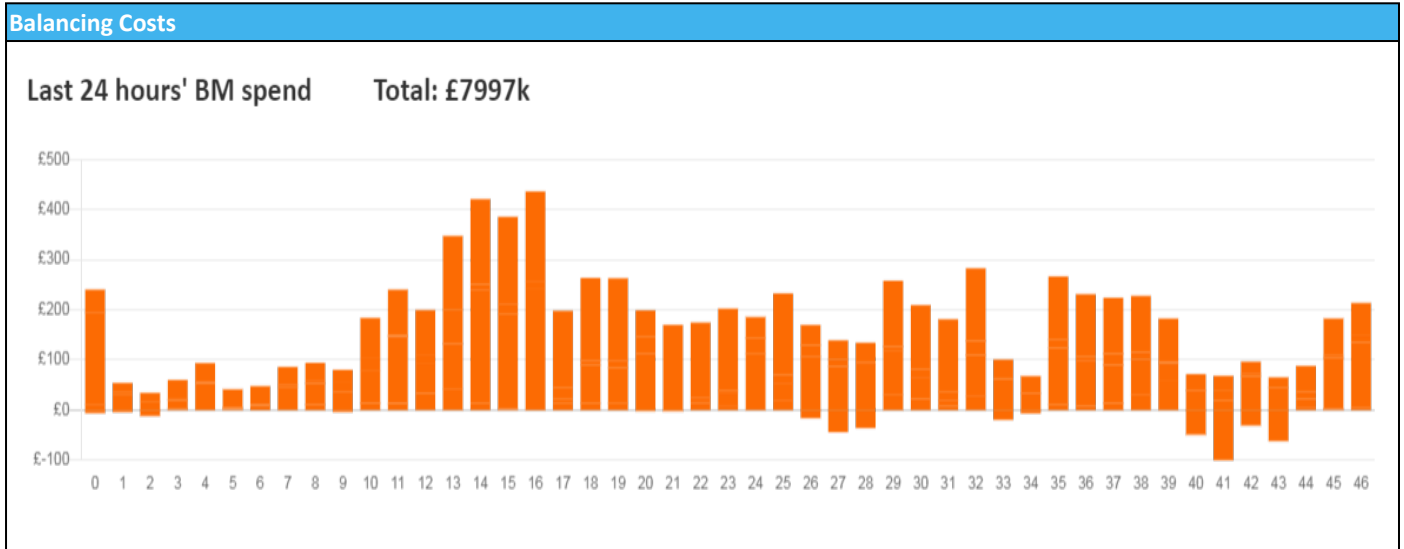


nationalgridESO

National Electricity Transmission System Status Report
Thursday 08 December 2022

Today's High Level Risk Status Forecast for the next 24h			
General Status		Voltage	
Demand		System Inertia	
System Margins		Weather	
Generation		Transmission	
Active Constraints			
System Warning			

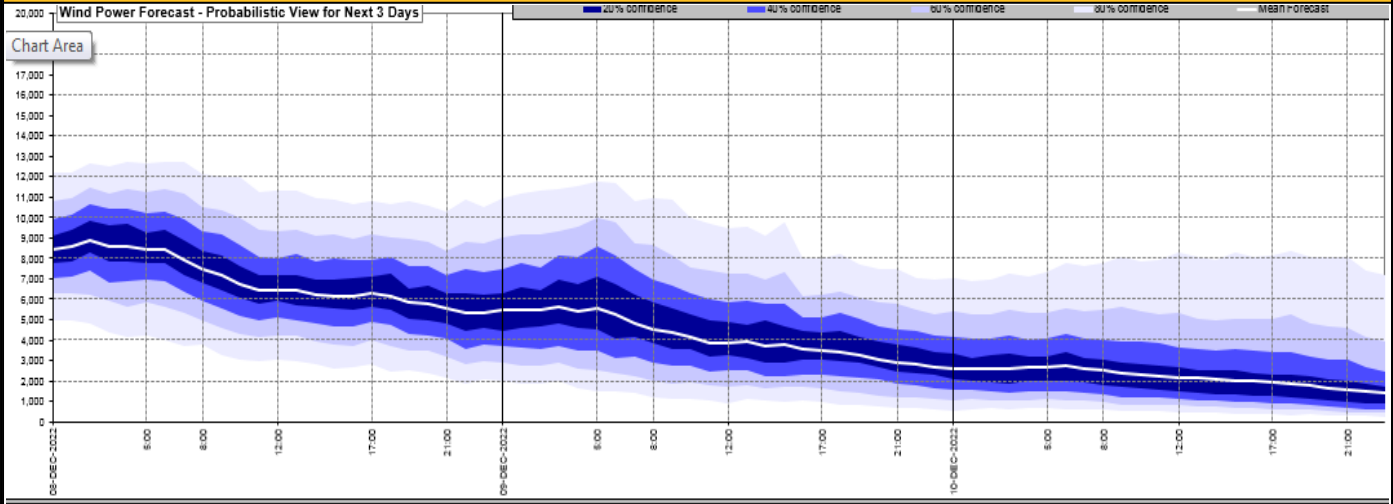
Today's Minimum De-Rated Margin	-27.15 (SP 34)	
Current BMU Largest Loss Risk	Generation	1500 MW
	Demand	560 MW



Yesterday's Market Summary	
Cash Out Price (Max)	£440.82 (SP 14)
Cash Out Price (Min)	£138.50 (SP 23)
Peak Demand Yesterday	42,940 MW
Minimum Demand	24,072 MW

Interconnector Net Transfer Capacity (MWs)			
Today	Import	Export	Remarks
Netherlands (BritNed)	1100	1133	Fully Available
France (IFA2)	1014	1014	Fully Available
Belgium (Nemo)	1000	1025	Fully Available
Ireland (EWIC)	500	530	Fully Available
France (ElecLink)	1014	1014	Fully Available
France (IFA)	500	500	Partially Available 1000MW avail from 15:00
Northern Ireland (MOYLE)	500	500	Fully Available
Norway (NSL)	1400	1400	Fully Available

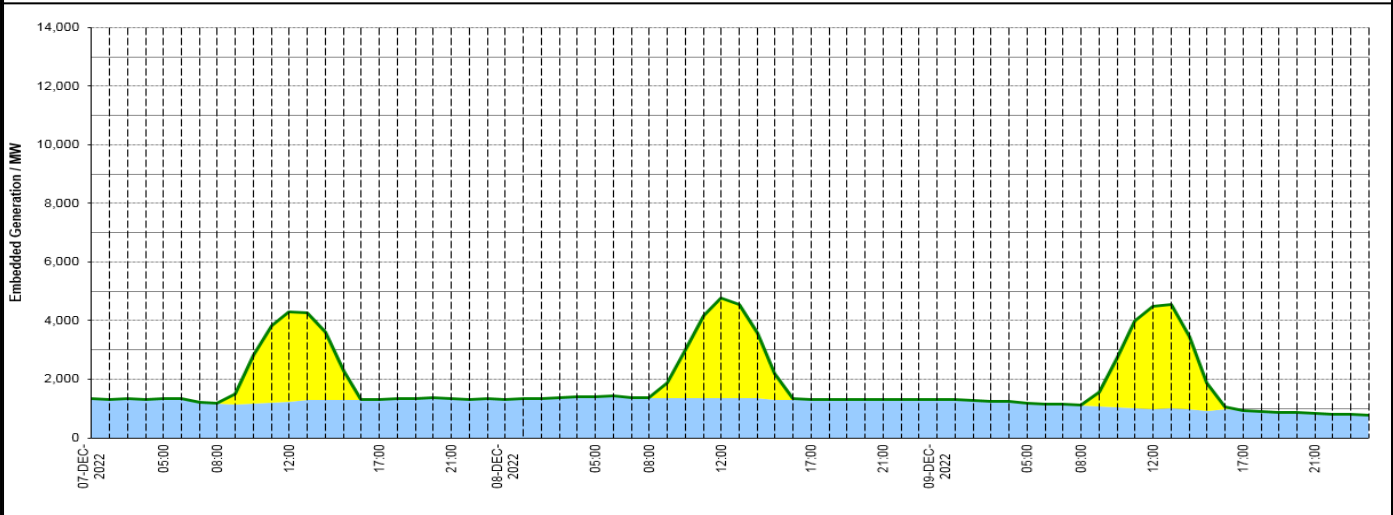
Wind Power Forecast



Expected embedded generation (MWs)

Embedded Generation Forecast

	07-DEC-2022					08-DEC-2022					09-DEC-2022						
	05:00	08:00	12:00	17:00	21:00	00:00	05:00	08:00	12:00	17:00	21:00	00:00	05:00	08:00	12:00	17:00	21:00
Solar (MW)	0	0	3065	0	0	0	0	0	3423	0	0	0	0	0	3533	0	0
Wind (MW)	1349	1175	1235	1307	1346	1312	1407	1368	1347	1299	1294	1322	1194	1112	963	941	824
STOR (MW)	0	0	0	0	0	0	0	0	0	0	0	0	0	0	0	0	0
Total (MW)	1349	1175	4300	1307	1346	1312	1407	1368	4770	1299	1294	1322	1194	1112	4496	941	824



Weather	Source	Commentary
Latest forecast (Summary)	Met Office SEPA Natural Resources Wales	<p>Today: Wintry showers across northern Scotland, and also affecting east coasts. Some showers across west Wales and southwest England producing sleet or snow over higher ground. Many other places fine and dry. Breezy in the north, and feeling cold for all.</p> <p>Tonight: Wintry showers over northern Scotland and exposed coasts elsewhere, occasionally moving inland, with further snow accumulations and icy surfaces. Clear spells elsewhere and a widespread frost, severe in places.</p>
General Weather Concerns e.g. wind, rain, snow, flooding, GB Weather Warnings	Met Office Weather Warnings SEPA Natural Resources Wales	<p>UK Weather Warnings Yellow - Ice Areas affected: East Midlands, East of England, North East England, North West England, Northern Ireland, SW Scotland, Lothian Borders, South West England, Strathclyde, Wales, Yorkshire & Humber</p> <p>Flood Warnings No flood warnings are currently in force for England. No flood warnings are currently in force for Scotland. No flood warnings are currently in force for Wales.</p>

Further Information	
BM Reports	https://www.bmreports.com
System Balancing Reports	https://www.nationalgrideso.com/balancing-data/system-balancing-reports
Forecast Volumes and Costs	https://www.nationalgrideso.com/balancing-data/forecast-volumes-and-costs
NGESO Insights	https://www.nationalgrideso.com/insights