

National Electricity Transmission System Status Report

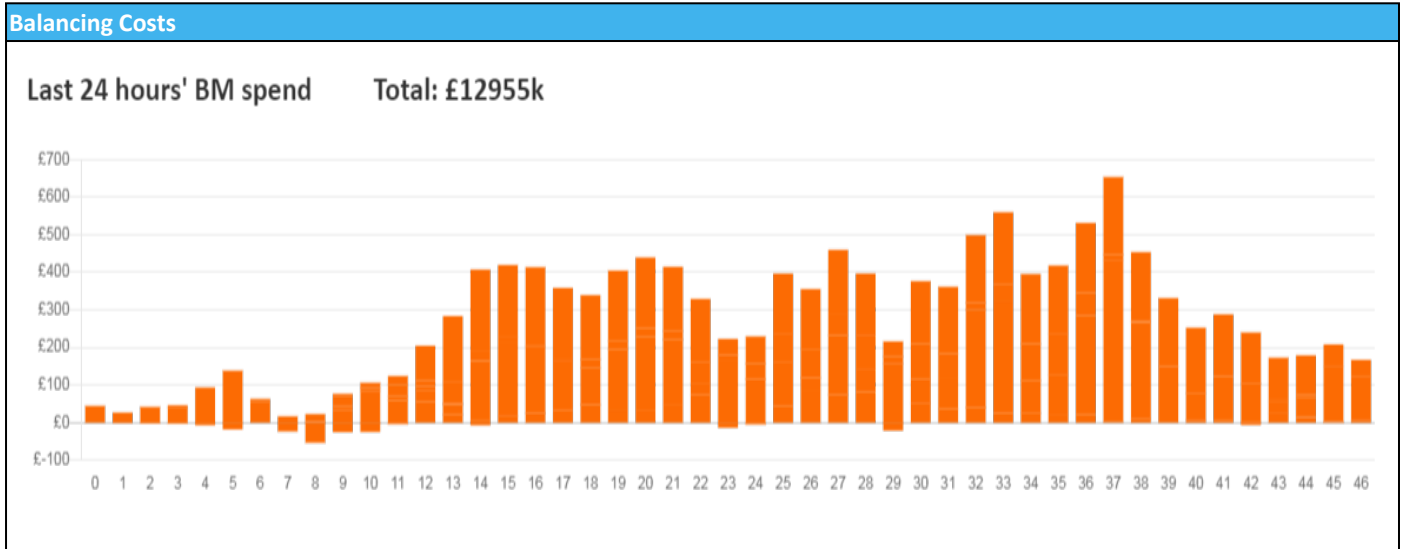


nationalgridESO

National Electricity Transmission System Status Report
Wednesday 07 December 2022

Today's High Level Risk Status Forecast for the next 24h			
General Status		Voltage	
Demand		System Inertia	
System Margins		Weather	
Generation		Transmission	
Active Constraints			
System Warning			

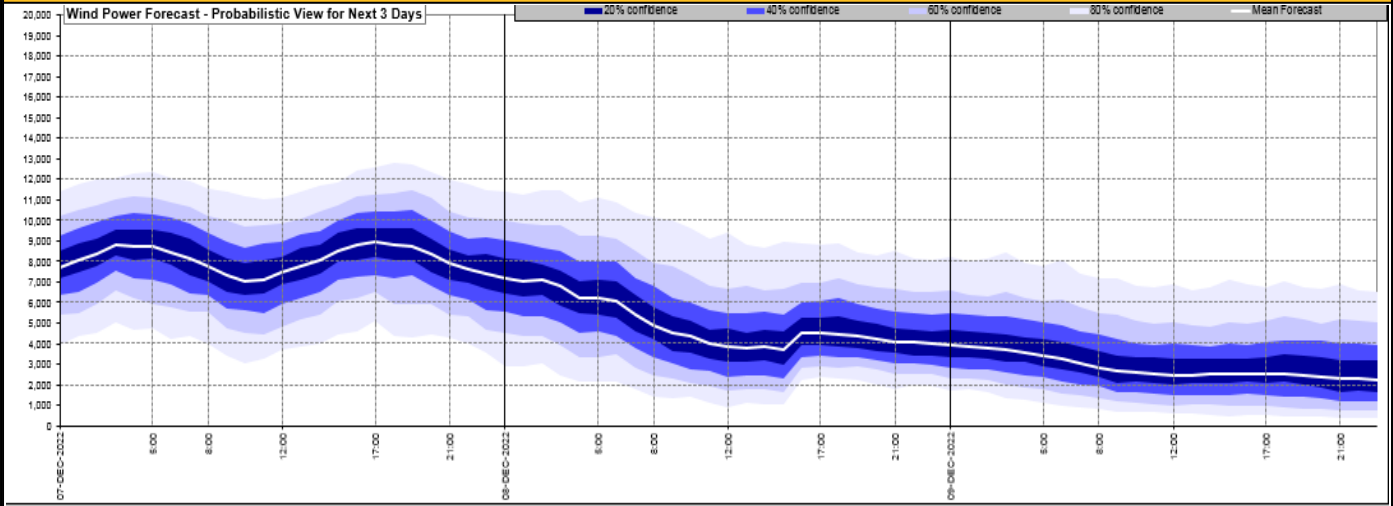
Today's Minimum De-Rated Margin	5154 (SP 39)	
Current BMU Largest Loss Risk	Generation	1500 MW
	Demand	560 MW



Yesterday's Market Summary	
Cash Out Price (Max)	£485.00 (SP 39)
Cash Out Price (Min)	£50 (SP 1)
Peak Demand Yesterday	41,956 MW
Minimum Demand	23,121 MW

Interconnector Net Transfer Capacity (MWs)			
Today	Import	Export	Remarks
Netherlands (BritNed)	1100	1133	Fully Available
France (IFA2)	1014	1014	Fully Available
Belgium (Nemo)	1000	1025	Fully Available
Ireland (EWIC)	500	530	Fully Available
France (ElecLink)	1014	1014	Fully Available
France (IFA)	500	500	Partially Available at 500MW
Northern Ireland (MOYLE)	500	500	Fully Available
Norway (NSL)	1400	1400	Fully Available

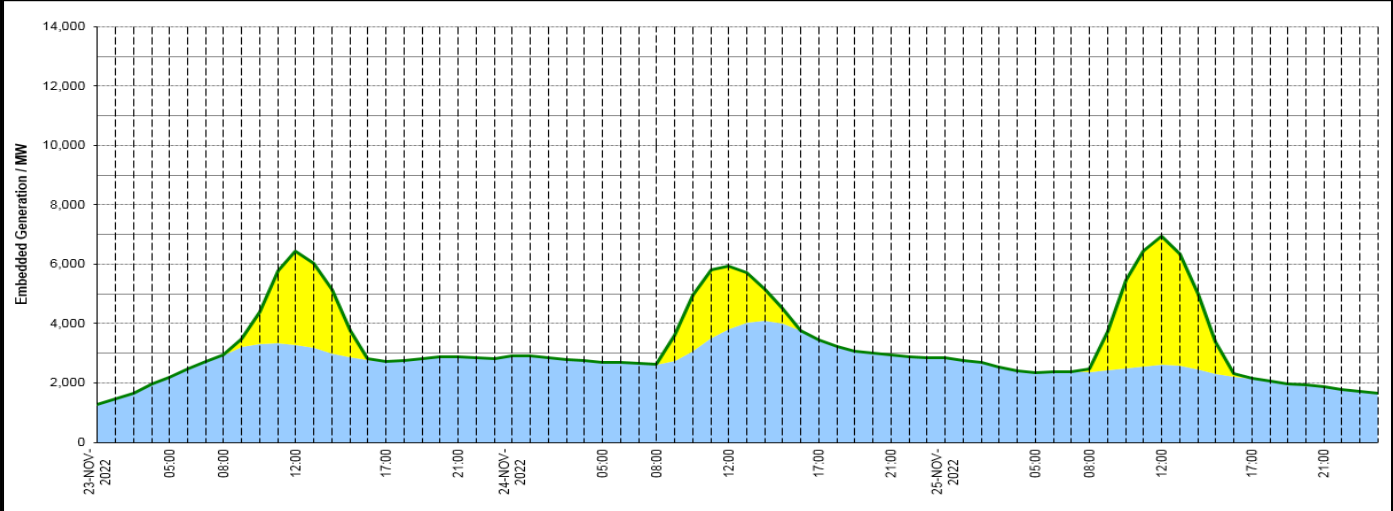
Wind Power Forecast



Expected embedded generation (MWs)

Embedded Generation Forecast

	23-NOV-2022					24-NOV-2022					25-NOV-2022						
	05:00	08:00	12:00	17:00	21:00	00:00	05:00	08:00	12:00	17:00	21:00	00:00	05:00	08:00	12:00	17:00	21:00
Solar (MW)	0	0	3165	0	0	0	0	1	2132	0	0	0	0	110	4339	0	0
Wind (MW)	2185	2932	3282	2722	2895	2925	2687	2630	3812	3440	2939	2839	2343	2377	2619	2153	1861
STOR (MW)	0	0	0	0	0	0	0	0	0	0	0	0	0	0	0	0	0
Total (MW)	2185	2932	6447	2722	2895	2925	2687	2631	5944	3440	2939	2839	2343	2487	6958	2153	1861



Weather	Source	Commentary
Latest forecast (Summary)	Met Office SEPA Natural Resources Wales	<p>Today: Wintry showers affecting northern Scotland, Northern Ireland, Wales and eastern England, with snow settling on hills in the north. Mostly sunny elsewhere but feeling cold.</p> <p>Tonight: Widespread frost with some icy surfaces. Sleet and snow showers most frequent across northern Scotland, but also affecting parts of Northern Ireland, north Wales and eastern England at times.</p>
General Weather Concerns e.g. wind, rain, snow, flooding, GB Weather Warnings	Met Office Weather Warnings SEPA Natural Resources Wales	<p>UK Weather Warnings Yellow - Snow & ice Central, Tayside & Fife, Grampian, Highlands & Eilean Siar, Orkney & Shetland, Strathclyde East Midlands, East of England, North East England, SW Scotland, Lothian Borders, Yorkshire & Humber</p> <p>Flood Warnings 0 flood warnings and 1 flood alerts issued for England. No flood warnings are currently in force for Scotland. No flood warnings are currently in force for Wales.</p>

Further Information	
BM Reports	https://www.bmreports.com
System Balancing Reports	https://www.nationalgrideso.com/balancing-data/system-balancing-reports
Forecast Volumes and Costs	https://www.nationalgrideso.com/balancing-data/forecast-volumes-and-costs
NGESO Insights	https://www.nationalgrideso.com/insights