

**National Electricity  
Transmission System Status Report**

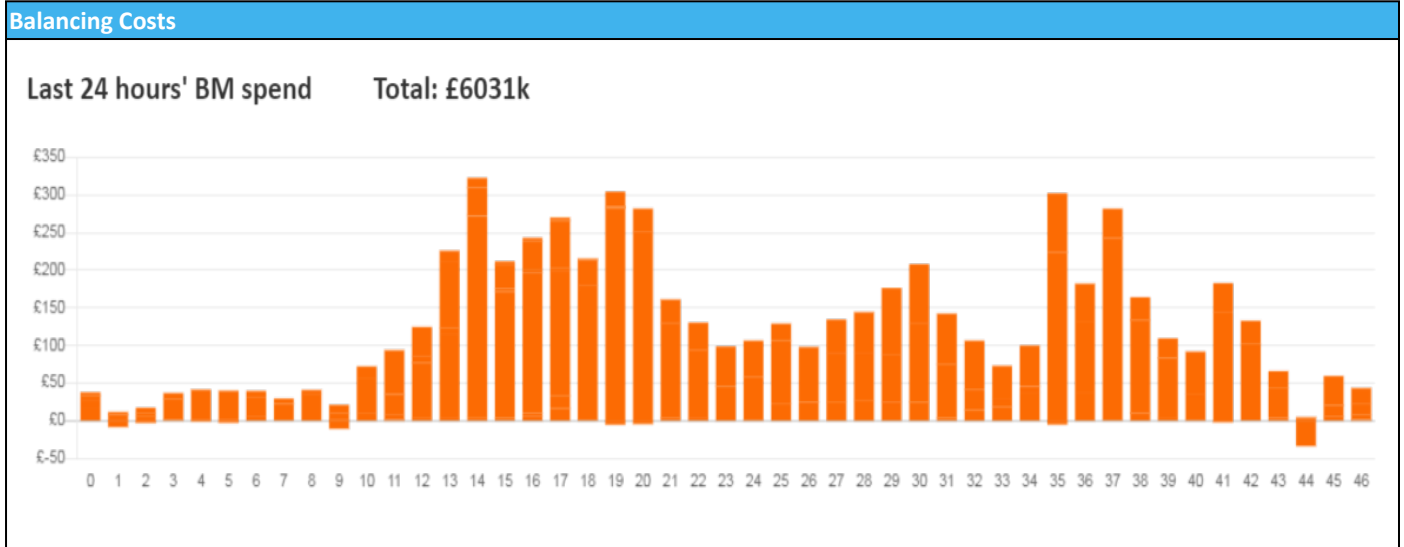


national**grid**ESO

National Electricity Transmission System Status Report  
Friday 02 December 2022

| Today's High Level Risk Status Forecast for the next 24h |  |                |  |
|--|--|----------------|--|
| General Status   |  | Voltage        |  |
| Demand   |  | System Inertia |  |
| System Margins   |  | Weather        |  |
| Generation   |  | Transmission   |  |
| Active Constraints                                       |  |                |  |
| <a href="#">System Warning</a>                           |  |                |  |

|   |               |         |
|---|---------------|---------|
| <a href="#">Today's Minimum De-Rated Margin</a> | 5,593 (SP 16) |         |
| Current BMU Largest Loss Risk                   | Generation    | 1500 MW |
|   | Demand        | 560 MW  |



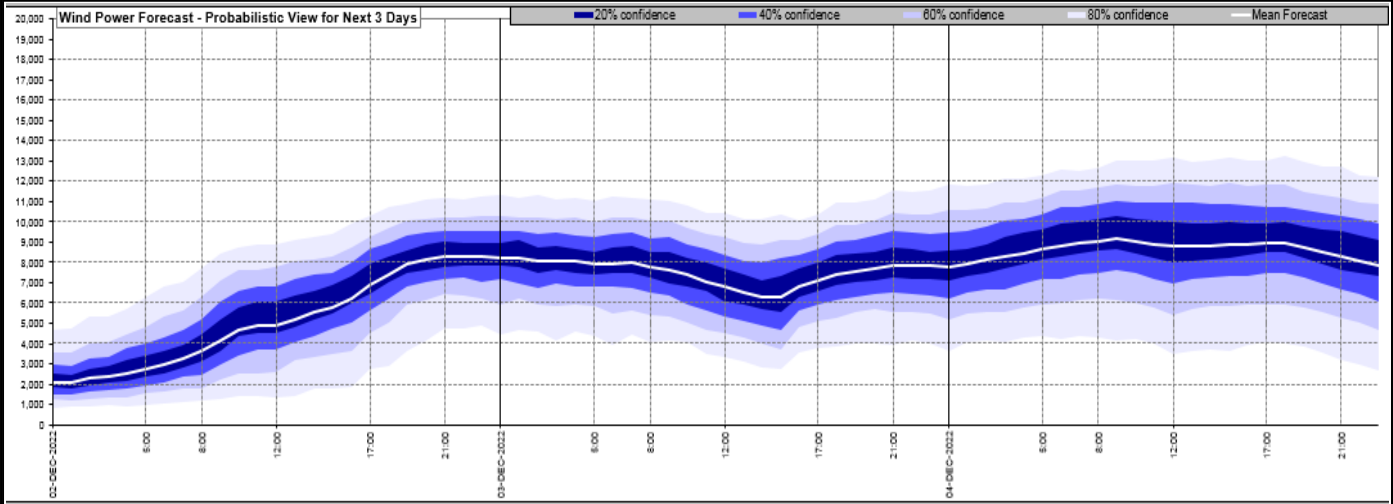
**Yesterday's Market Summary**

|                                       |                       |
|---------------------------------------|-----------------------|
| <a href="#">Cash Out Price (Max)</a>  | £584.00 (SP37 & SP39) |
| <a href="#">Cash Out Price (Min)</a>  | £200.05 (SP3 & SP4)   |
| <a href="#">Peak Demand Yesterday</a> | 41,384 MW             |
| Minimum Demand                        | 23,030 MW             |

**Interconnector Net Transfer Capacity (MWs)**

| Today                    | Import | Export | Remarks  |
|--------------------------|--------|--------|--|
| Netherlands (BritNed)    | 1100   | 1133   | Fully Available                                    |
| France (IFA2)            | 1014   | 1014   | Fully Available                                    |
| Belgium (Nemo)           | 1000   | 1025   | Fully Available                                    |
| Ireland (EWIC)           | 500    | 530    | Fully Available                                    |
| France (ElecLink)        | 1014   | 1014   | Fully Available                                    |
| France (IFA)             | 500    | 500    | Partially Available at 500MW until 7/12/22 @ 15:00 |
| Northern Ireland (MOYLE) | 500    | 500    | Fully Available                                    |
| Norway (NSL)             | 1400   | 1400   | Fully Available                                    |

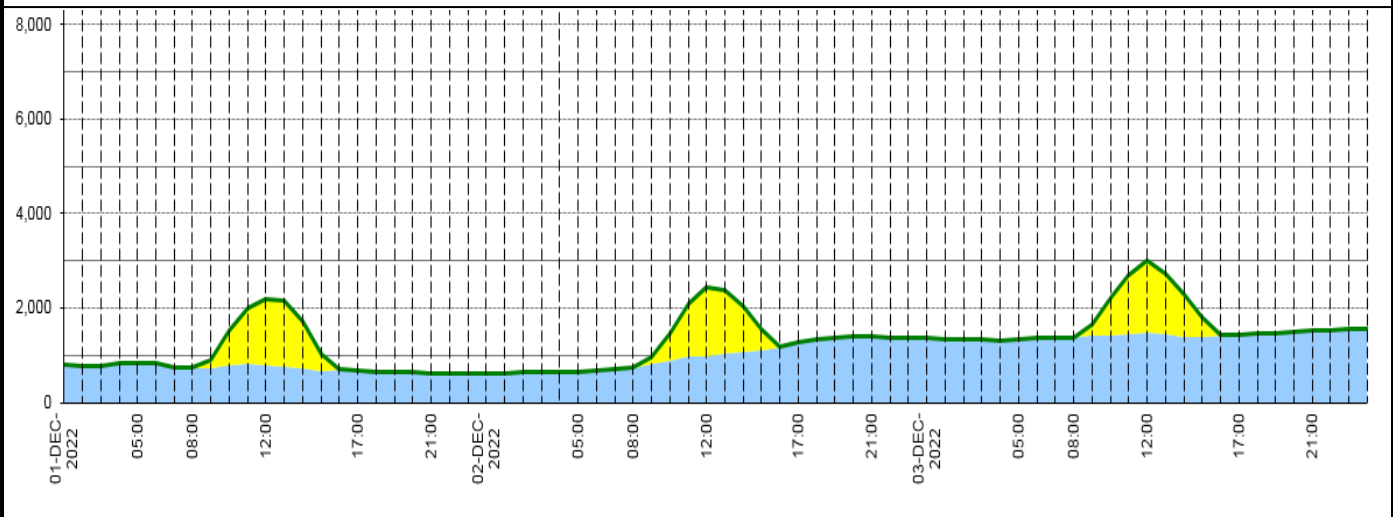
**Wind Power Forecast**



**Expected embedded generation (MWs)**

**Embedded Generation Forecast**

|                   | 01-DEC-2022 |            |             |            |            | 02-DEC-2022 |            |            |             |             | 03-DEC-2022 |             |             |             |             |             |             |
|-------------------|-------------|------------|-------------|------------|------------|-------------|------------|------------|-------------|-------------|-------------|-------------|-------------|-------------|-------------|-------------|-------------|
|                   | 05:00       | 08:00      | 12:00       | 17:00      | 21:00      | 00:00       | 05:00      | 08:00      | 12:00       | 17:00       | 21:00       | 00:00       | 05:00       | 08:00       | 12:00       | 17:00       | 21:00       |
| Solar (MW)        | 0           | 17         | 1404        | 0          | 0          | 0           | 0          | 0          | 1452        | 0           | 0           | 0           | 0           | 0           | 1534        | 0           | 0           |
| Wind (MW)         | 837         | 730        | 801         | 676        | 626        | 627         | 654        | 740        | 989         | 1270        | 1397        | 1365        | 1329        | 1379        | 1482        | 1439        | 1530        |
| STOR (MW)         | 0           | 0          | 0           | 0          | 0          | 0           | 0          | 0          | 0           | 0           | 0           | 0           | 0           | 0           | 0           | 0           | 0           |
| <b>Total (MW)</b> | <b>837</b>  | <b>747</b> | <b>2205</b> | <b>676</b> | <b>626</b> | <b>627</b>  | <b>654</b> | <b>740</b> | <b>2441</b> | <b>1270</b> | <b>1397</b> | <b>1365</b> | <b>1329</b> | <b>1379</b> | <b>3016</b> | <b>1439</b> | <b>1530</b> |



| Weather   | Source  | Commentary  |
|---|---|---|
| Latest forecast (Summary)   | <a href="#">Met Office</a><br><a href="#">SEPA</a><br><a href="#">Natural Resources Wales</a>                                     | <p><b>Today:</b><br/>Low cloud and fog patches in the south slowly lifting from the east as a chilly northeasterly wind develops, bringing sunny spells but also a few showers. Cloudier with patchy rain or drizzle at times across Scotland.</p> <p><b>Tonight:</b><br/>Mild with cloud and patchy rain across NW Scotland. Elsewhere some clear spells but showers continuing to affect some eastern parts. Patchy frost developing away from eastern coastal areas.</p> |
| General Weather Concerns e.g. wind, rain, snow, flooding, GB Weather Warnings | <a href="#">Met Office</a><br><a href="#">Weather Warnings</a><br><a href="#">SEPA</a><br><a href="#">Natural Resources Wales</a> | <p><b>UK Weather Warnings</b><br/>Yellow warning of fog:<br/>Areas affected: East Midlands   East of England   London &amp; South East England   South West England   Wales   West Midlands   Yorkshire &amp; Humber<br/>ACTIVE:<br/>Started at: 16:00 GMT on Thu 1 December<br/>Ends: 11:00 GMT on Fri 2 December<br/>Areas of fog will bring some difficult travel conditions on Friday morning.</p>  |

| Weather | Source | Commentary  |
|---------|--------|---|
|         |        |   |
|         |        | <p><b>Flood Warnings</b><br/>0 flood warnings and 8 flood alerts issued for England.</p> <p>No flood warnings are currently in force for Scotland.</p> <p>No flood warnings are currently in force for Wales.</p> |

*Contains public sector information licensed under the Open Government Licence v1.0*

| Further Information        |   |
|----------------------------|---|
| BM Reports                 | <a href="https://www.bmreports.com">https://www.bmreports.com</a>   |
| System Balancing Reports   | <a href="https://www.nationalgrideso.com/balancing-data/system-balancing-reports">https://www.nationalgrideso.com/balancing-data/system-balancing-reports</a>     |
| Forecast Volumes and Costs | <a href="https://www.nationalgrideso.com/balancing-data/forecast-volumes-and-costs">https://www.nationalgrideso.com/balancing-data/forecast-volumes-and-costs</a> |
| NGESO Insights             | <a href="https://www.nationalgrideso.com/insights">https://www.nationalgrideso.com/insights</a>   |