

# National Electricity Transmission System Status Report

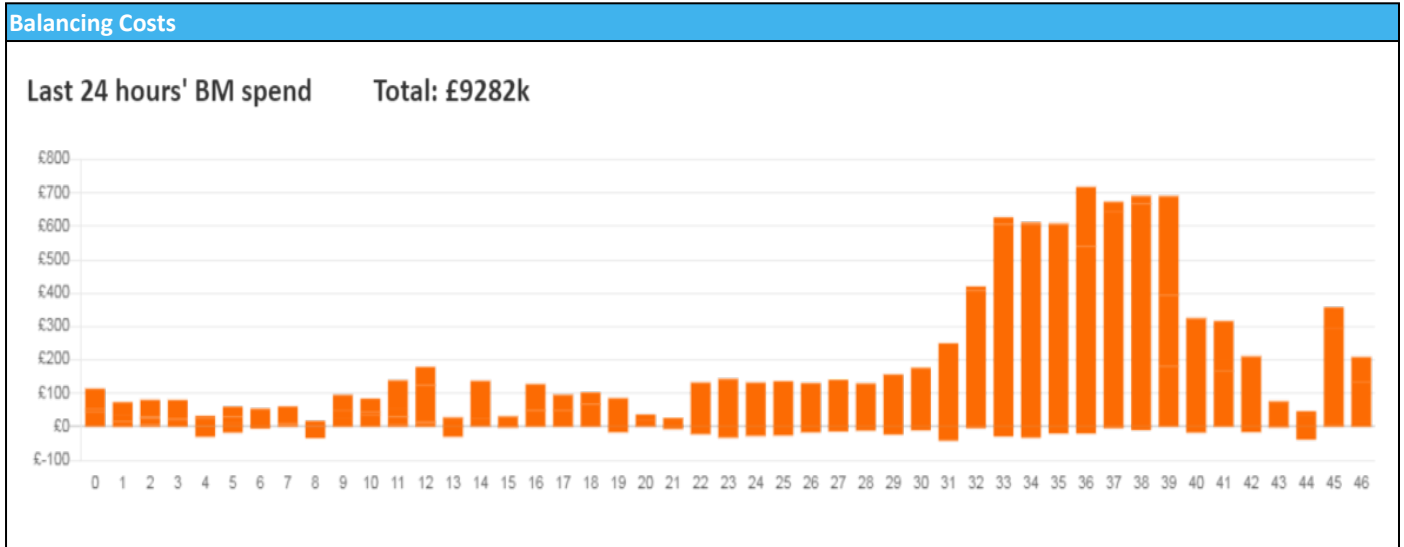


nationalgridESO

National Electricity Transmission System Status Report  
Tuesday 29 November 2022

Today's High Level Risk Status Forecast for the next 24h			
General Status		Voltage	
Demand		System Inertia	
System Margins		Weather	
Generation		Transmission	
Active Constraints			
<a href="#">System Warning</a>			

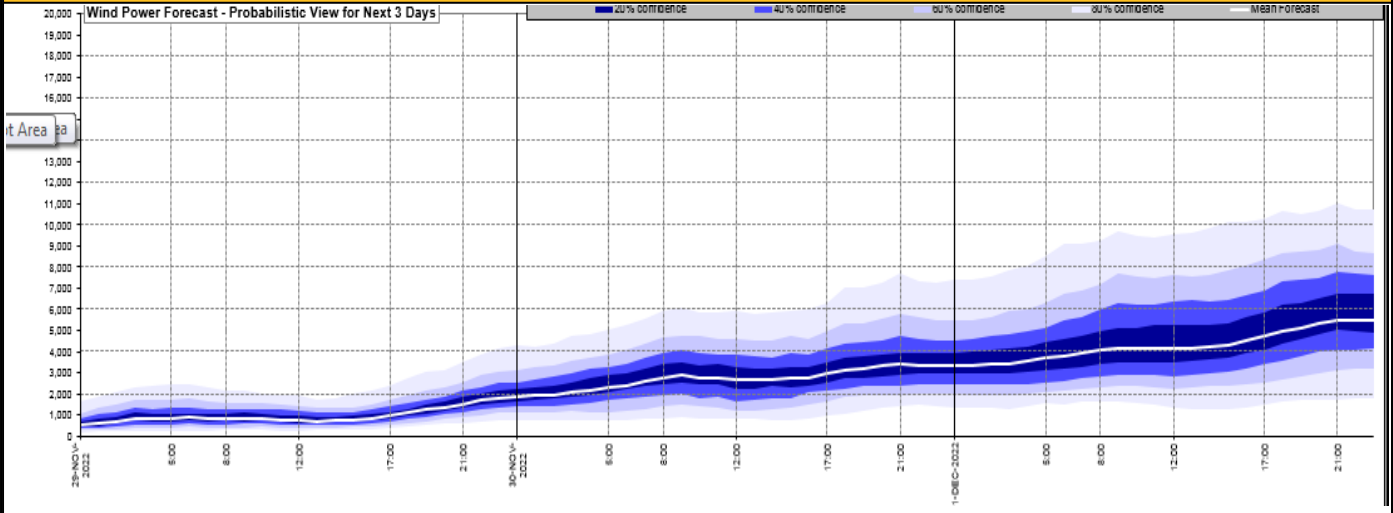
<a href="#">Today's Minimum De-Rated Margin</a>	-1,312 (SP 35)	
Current BMU Largest Loss Risk	Generation	1500 MW
	Demand	560 MW



Yesterday's Market Summary	
<a href="#">Cash Out Price (Max)</a>	£759.00 (SP 41)
<a href="#">Cash Out Price (Min)</a>	£85 (SP 8/10)
<a href="#">Peak Demand Yesterday</a>	39,983 MW
Minimum Demand	21,890 MW

Interconnector Net Transfer Capacity (MWs)			
Today	Import	Export	Remarks
Netherlands (BritNed)	1100	1133	Fully Available
France (IFA2)	1014	1014	Fully Available
Belgium (Nemo)	1000	1025	Fully Available
Ireland (EWIC)	500	530	Fully Available
France (ElecLink)	1014	1014	Fully Available
France (IFA)	500	500	Partially Available at 500MW until 7/12/22 @ 15:00
Northern Ireland (MOYLE)	500	500	Fully Available
Norway (NSL)	1400	1400	Fully Available

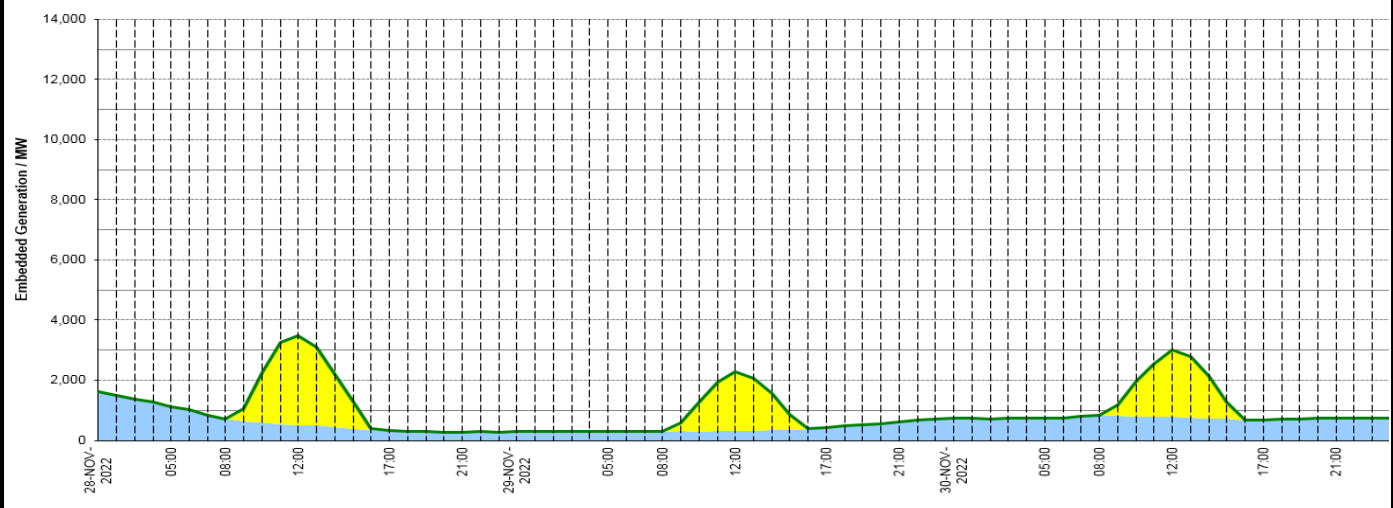
**Wind Power Forecast**



**Expected embedded generation (MWs)**

**Embedded Generation Forecast**

	28-NOV-2022					29-NOV-2022					30-NOV-2022						
	05:00	08:00	12:00	17:00	21:00	00:00	05:00	08:00	12:00	17:00	21:00	00:00	05:00	08:00	12:00	17:00	21:00
Solar (MW)	0	0	2968	0	0	0	0	0	1957	0	0	0	0	0	2217	0	0
Wind (MW)	1127	723	517	330	284	287	299	299	312	435	621	726	738	828	784	688	753
STOR (MW)	0	0	0	0	0	0	0	0	0	0	0	0	0	0	0	0	0
<b>Total (MW)</b>	<b>1127</b>	<b>723</b>	<b>3485</b>	<b>330</b>	<b>284</b>	<b>287</b>	<b>299</b>	<b>299</b>	<b>2269</b>	<b>435</b>	<b>621</b>	<b>726</b>	<b>738</b>	<b>828</b>	<b>3001</b>	<b>688</b>	<b>753</b>



Weather	Source	Commentary
Latest forecast (Summary)	<a href="#">Met Office</a> <a href="#">SEPA</a> <a href="#">Natural Resources Wales</a>	<b>Today:</b> A few sunny spells but large areas of low cloud and fog will be slow to clear and may persist all day in places making it feel rather cold. Best of the sunshine expected across the far north and southwest. <b>Tonight:</b> Fog and low cloud developing more widely with any clear spells leading to an overnight frost, most likely in the north. A few spots of rain across Northern Ireland later.
General Weather Concerns e.g. wind, rain, snow, flooding, GB Weather Warnings	<a href="#">Met Office</a> <a href="#">Weather Warnings</a> <a href="#">SEPA</a> <a href="#">Natural Resources Wales</a>	<b>UK Weather Warnings</b> Yellow warning of fog Areas affected: East Midlands   London & South East England   North East England   North West England   Northern Ireland   SW Scotland, Lothian Borders   South West England   West Midlands   Yorkshire & Humber ACTIVE started at: 01:56 GMT on Tue 29 November Ends: 11:00 GMT on Tue 29 November Fog likely to cause some travel delays this morning <b>Flood Warnings</b> 0 flood warnings and 35 flood alerts issued for England. 0 flood warnings and 0 flood alerts issued for Scotland.

Weather	Source	Commentary
		0 flood warnings and 1 flood alerts issued for Wales.

*Contains public sector information licensed under the Open Government Licence v1.0*

Further Information	
BM Reports	<a href="https://www.bmreports.com">https://www.bmreports.com</a>
System Balancing Reports	<a href="https://www.nationalgrideso.com/balancing-data/system-balancing-reports">https://www.nationalgrideso.com/balancing-data/system-balancing-reports</a>
Forecast Volumes and Costs	<a href="https://www.nationalgrideso.com/balancing-data/forecast-volumes-and-costs">https://www.nationalgrideso.com/balancing-data/forecast-volumes-and-costs</a>
NGESO Insights	<a href="https://www.nationalgrideso.com/insights">https://www.nationalgrideso.com/insights</a>