

**National Electricity  
Transmission System Status Report**

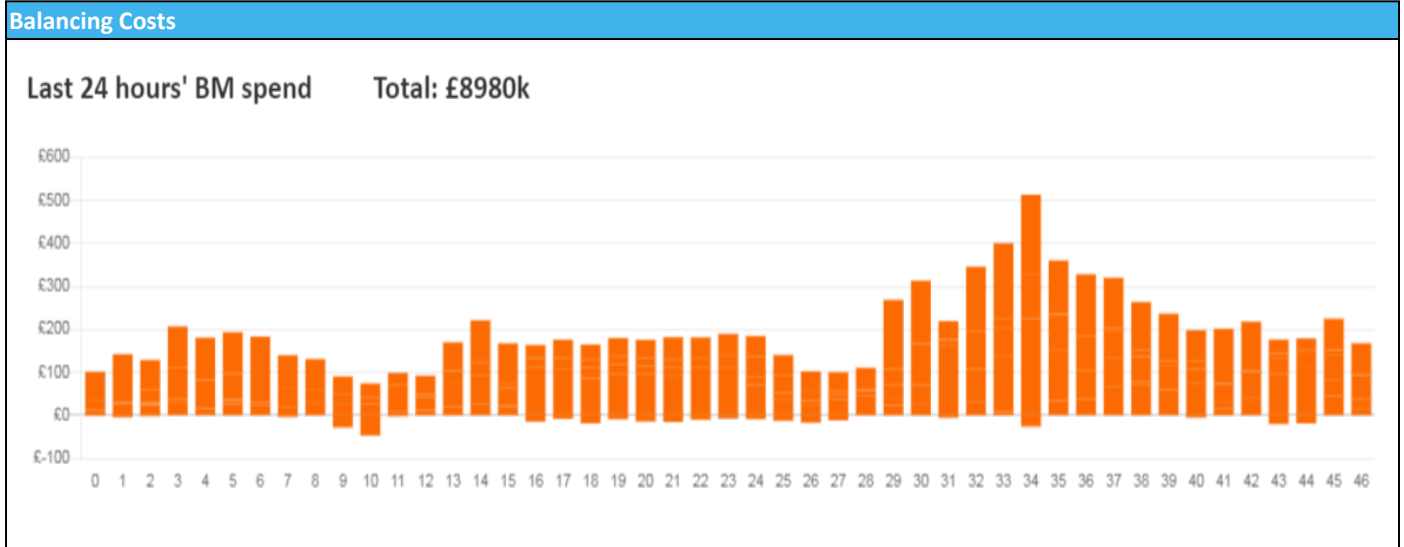


national**grid**ESO

National Electricity Transmission System Status Report  
Friday 18 November 2022

Today's High Level Risk Status Forecast for the next 24h			
General Status		Voltage	
Demand		System Inertia	
System Margins		Weather	
Generation		Transmission	
Active Constraints			
<a href="#">System Warning</a>			

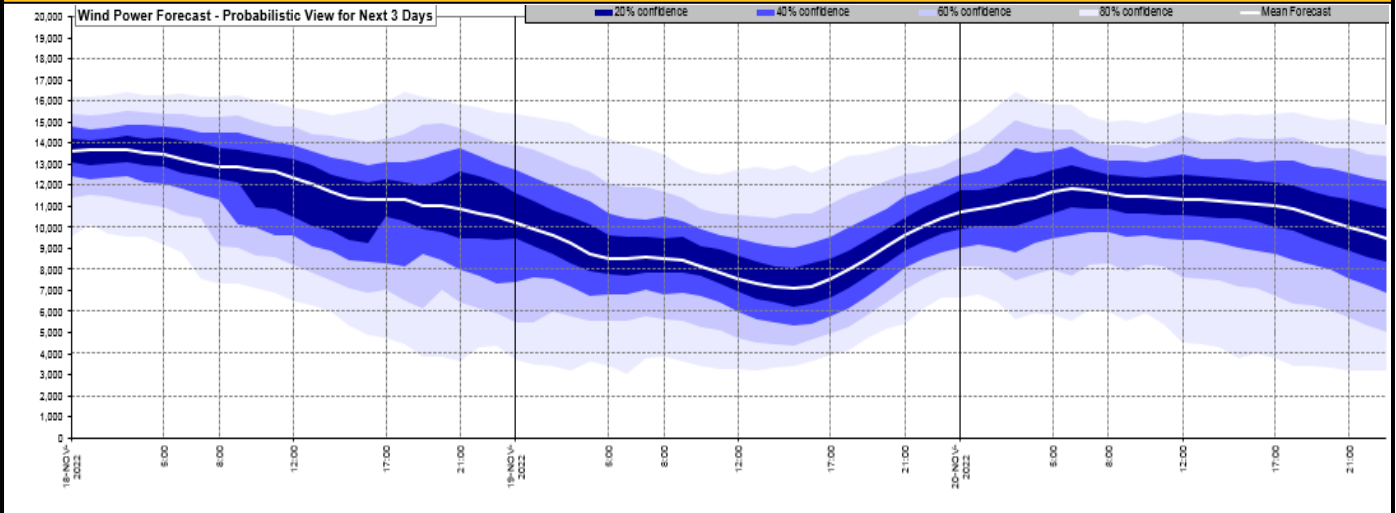
<a href="#">Today's Minimum De-Rated Margin</a>	10019.26 (SP 35)	
Current BMU Largest Loss Risk	Generation	1500 MW
	Demand	1050 MW



Yesterday's Market Summary	
<a href="#">Cash Out Price (Max)</a>	£259.14 (SP 36)
<a href="#">Cash Out Price (Min)</a>	£-8.00 (SP 8)
<a href="#">Peak Demand Yesterday</a>	41,125 MW
Minimum Demand	19,0160 MW

Interconnector Net Transfer Capacity (MWs)			
Today	Import	Export	Remarks
Netherlands (BritNed)	1100	1133	Fully Available
France (IFA2)	1014	1014	Fully Available
Belgium (Nemo)	1000	1025	Fully Available
Ireland (EWIC)	500	530	Fully Available
France (ElecLink)	1014	1014	Fully Available
France (IFA)	1000	1000	Partially Available
Northern Ireland (MOYLE)	500	500	Fully Available
Norway (NSL)	1400	1400	Fully Available

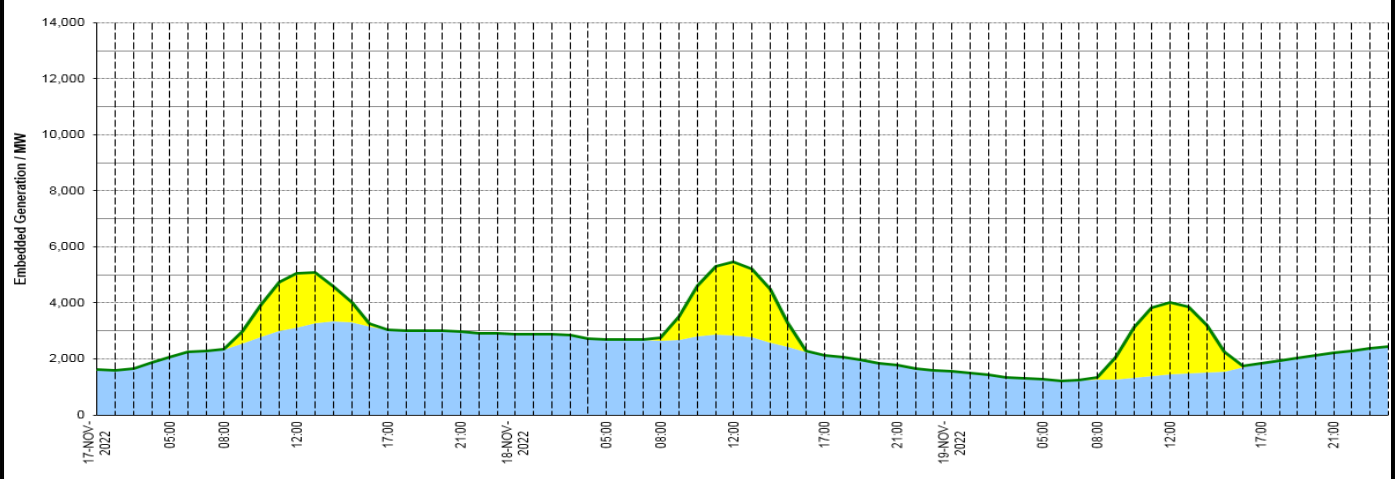
**Wind Power Forecast**



**Expected embedded generation (MWs)**

**Embedded Generation Forecast**

	17-NOV-2022					18-NOV-2022					19-NOV-2022						
	05:00	08:00	12:00	17:00	21:00	00:00	05:00	08:00	12:00	17:00	21:00	00:00	05:00	08:00	12:00	17:00	21:00
Solar (MW)	0	9	1924	0	0	0	116	2609	0	0	0	0	93	2559	0	0	0
Wind (MW)	2069	2342	3133	3035	2981	2897	2680	2642	2843	2138	1778	1551	1264	1247	1443	1831	2214
STOR (MW)	0	0	0	0	0	0	0	0	0	0	0	0	0	0	0	0	0
<b>Total (MW)</b>	<b>2069</b>	<b>2351</b>	<b>5057</b>	<b>3035</b>	<b>2981</b>	<b>2897</b>	<b>2680</b>	<b>2758</b>	<b>5452</b>	<b>2138</b>	<b>1778</b>	<b>1551</b>	<b>1264</b>	<b>1340</b>	<b>4002</b>	<b>1831</b>	<b>2214</b>



Weather	Source	Commentary
Latest forecast (Summary)	<a href="#">Met Office</a> <a href="#">SEPA</a> <a href="#">Natural Resources Wales</a>	<p><b>Today:</b> Rain easing across northern England but continues across eastern Scotland, heavy at times especially this morning, with possible flooding. Brighter in Northern Ireland and some southern areas, with scattered showers, mainly in the southwest corner. Rather chilly, gales in northeast.</p> <p><b>Tonight:</b> Rain and strong winds in eastern Scotland easing. Showery rain may return to other eastern coastal areas. Clearer in parts of the west and south, patchy rural frost and fog.</p>
General Weather Concerns e.g. wind, rain, snow, flooding, GB Weather Warnings	<a href="#">Met Office</a> <a href="#">Weather Warnings</a> <a href="#">SEPA</a> <a href="#">Natural Resources Wales</a>	<p><b>UK Weather Warnings</b></p> <p>Amber warning of rain Areas affected: Central, Tayside &amp; Fife   Grampian ACTIVE Started at: 00:00 GMT on Fri 18 November Ends: 15:00 GMT on Fri 18 November Heavy and persistent rain likely to cause flooding and disruption.</p> <p>Yellow warning of rain Areas affected: East Midlands   North East England   North West England   Yorkshire &amp; Humber ACTIVE Started at: 00:00 GMT on Thu 17 November Ends: 07:00 GMT on Fri 18 November Heavy rain leading to flooding and disruption in a few places.</p> <p>Yellow warning of rain</p>

Weather	Source	Commentary
		<p>Areas affected: Central, Tayside &amp; Fife   Grampian   North East England   SW Scotland, Lothian Borders</p> <p>ACTIVEStarted at: 15:00 GMT on Thu 17 NovemberEnds: 18:00 GMT on Fri 18 November</p> <p>A spell of persistent, and at times heavy rainfall will develop during Thursday, continuing on Friday, leading to a risk of flooding.</p> <p><b>Flood Warnings</b></p> <p>25 flood warning and 130 flood alerts issued for England.</p> <p>17 flood warnings and 9 flood alerts issued for Scotland.</p> <p>0 flood warnings and 0 flood alerts issued for Wales.</p>

*Contains public sector information licensed under the Open Government Licence v1.0*

Further Information	
BM Reports	<a href="https://www.bmreports.com">https://www.bmreports.com</a>
System Balancing Reports	<a href="https://www.nationalgrideso.com/balancing-data/system-balancing-reports">https://www.nationalgrideso.com/balancing-data/system-balancing-reports</a>
Forecast Volumes and Costs	<a href="https://www.nationalgrideso.com/balancing-data/forecast-volumes-and-costs">https://www.nationalgrideso.com/balancing-data/forecast-volumes-and-costs</a>
NGESO Insights	<a href="https://www.nationalgrideso.com/insights">https://www.nationalgrideso.com/insights</a>