

# National Electricity Transmission System Status Report

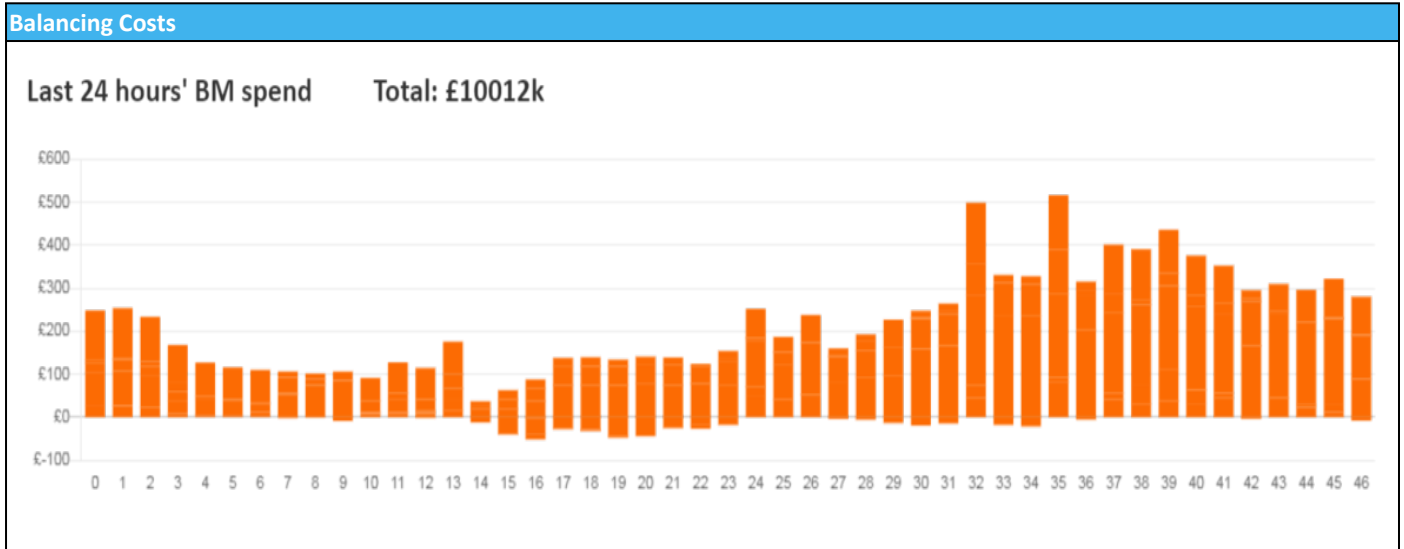


nationalgridESO

National Electricity Transmission System Status Report  
Tuesday 15 November 2022

Today's High Level Risk Status Forecast for the next 24h			
General Status		Voltage	
Demand		System Inertia	
System Margins		Weather	
Generation		Transmission	
Active Constraints			
<a href="#">System Warning</a>			

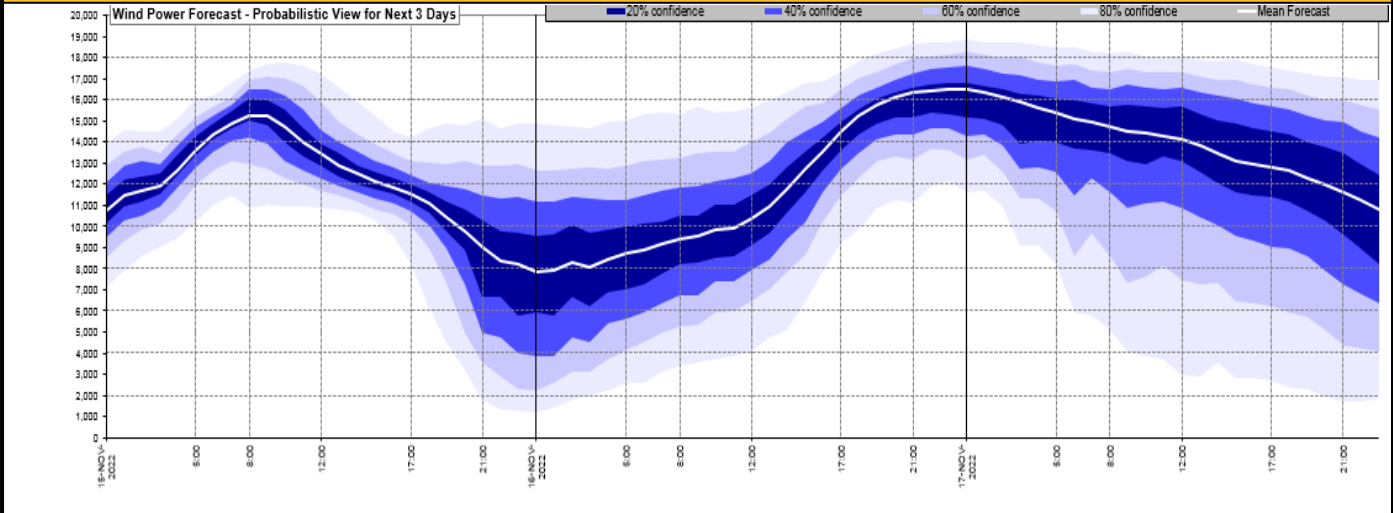
<a href="#">Today's Minimum De-Rated Margin</a>	10169 (SP 37)	
Current BMU Largest Loss Risk	Generation	1500 MW
	Demand	1150 MW



Yesterday's Market Summary	
<a href="#">Cash Out Price (Max)</a>	£247.05 (SP 34)
<a href="#">Cash Out Price (Min)</a>	£00.10 (SP 1)
<a href="#">Peak Demand Yesterday</a>	39,330 MW
Minimum Demand	18,120 MW

Interconnector Net Transfer Capacity (MWs)			
Today	Import	Export	Remarks
Netherlands (BritNed)	1100	1133	Fully Available
France (IFA2)	1014	1014	Fully Available
Belgium (Nemo)	1000	1025	Fully Available
Ireland (EWIC)	500	530	Fully Available
France (ElecLink)	1014	1014	Fully Available
France (IFA)	1000	1000	Partially Available
Northern Ireland (MOYLE)	500	500	Fully Available
Norway (NSL)	1400	1400	Fully Available

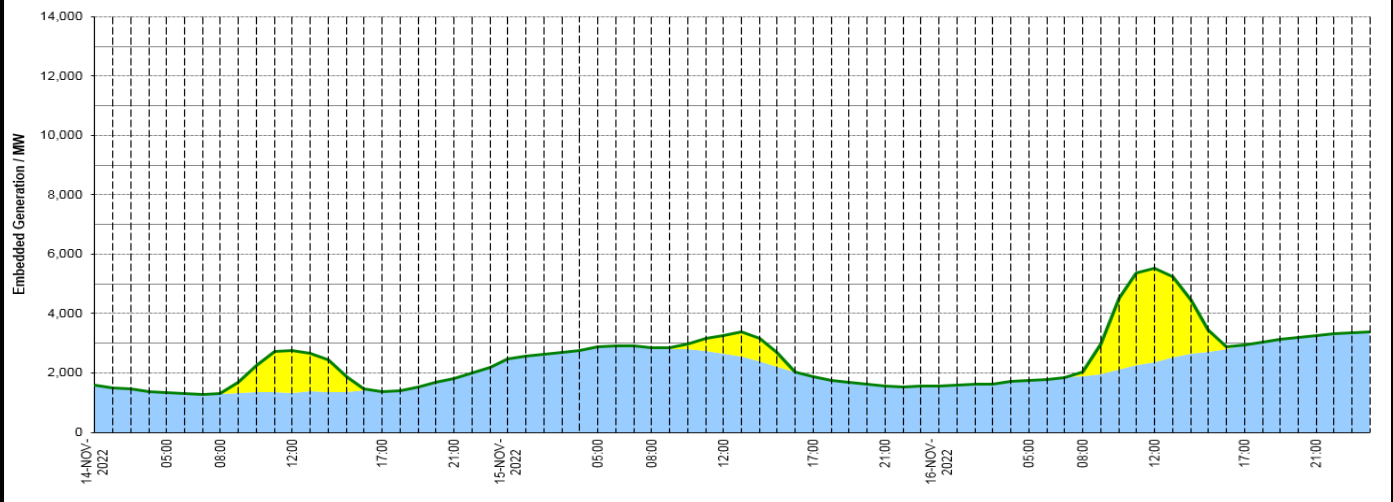
**Wind Power Forecast**



**Expected embedded generation (MWs)**

**Embedded Generation Forecast**

	14-NOV-2022					15-NOV-2022					16-NOV-2022						
	05:00	08:00	12:00	17:00	21:00	00:00	05:00	08:00	12:00	17:00	21:00	00:00	05:00	08:00	12:00	17:00	21:00
Solar (MW)	0	19	1446	0	0	0	0	614	0	0	0	0	0	144	3179	0	0
Wind (MW)	1335	1287	1324	1384	1821	2463	2884	2842	2656	1888	1567	1573	1744	1881	2359	2951	3270
STOR (MW)	0	0	0	0	0	0	0	0	0	0	0	0	0	0	0	0	0
Total (MW)	1335	1306	2770	1384	1821	2463	2884	2842	3270	1888	1567	1573	1744	2025	5538	2951	3270



Weather	Source	Commentary
Latest forecast (Summary)	<a href="#">Met Office</a> <a href="#">SEPA</a> <a href="#">Natural Resources Wales</a>	<p><b>Today:</b> A band of rain, heavy at times, moving northeastwards across most parts. Turning brighter in the west with plenty of sunshine across Northern Ireland, but heavy showers following to southwest England later. Gales developing in the far northeast.</p> <p><b>Tonight:</b> Rain becoming confined to the far northeast but severe gales developing here. Clear spells for many, and turning chilly with a few fog patches. Showery in the south and west.</p>
General Weather Concerns e.g. wind, rain, snow, flooding, GB Weather Warnings	<a href="#">Met Office</a> <a href="#">Weather Warnings</a> <a href="#">SEPA</a> <a href="#">Natural Resources Wales</a>	<p><b>UK Weather Warnings</b></p> <p>Yellow warning of rain Areas affected: London &amp; South East England   South West England   Wales   West Midlands ACTIVEStarted at: 00:00 GMT on Tue 15 NovemberEnds: 13:00 GMT on Tue 15 November Heavy rain may lead to some flooding and disruption to travel.</p> <p>Yellow warning of rain Areas affected: Central, Tayside &amp; Fife   Grampian Starts: 12:00 GMT on Tue 15 NovemberEnds: 21:00 GMT on Tue 15 November Heavy rain may lead to some flooding and disruption to travel.</p>

Weather	Source	Commentary
		<b>Flood Warnings</b> 0 flood warnings and 4 flood alerts issued for England.  0 flood warnings and 3 flood alerts issued for Scotland.  0 flood warnings and 0 flood alerts issued for Wales.

*Contains public sector information licensed under the Open Government Licence v1.0*

Further Information	
BM Reports	<a href="https://www.bmreports.com">https://www.bmreports.com</a>
System Balancing Reports	<a href="https://www.nationalgrideso.com/balancing-data/system-balancing-reports">https://www.nationalgrideso.com/balancing-data/system-balancing-reports</a>
Forecast Volumes and Costs	<a href="https://www.nationalgrideso.com/balancing-data/forecast-volumes-and-costs">https://www.nationalgrideso.com/balancing-data/forecast-volumes-and-costs</a>
NGESO Insights	<a href="https://www.nationalgrideso.com/insights">https://www.nationalgrideso.com/insights</a>