

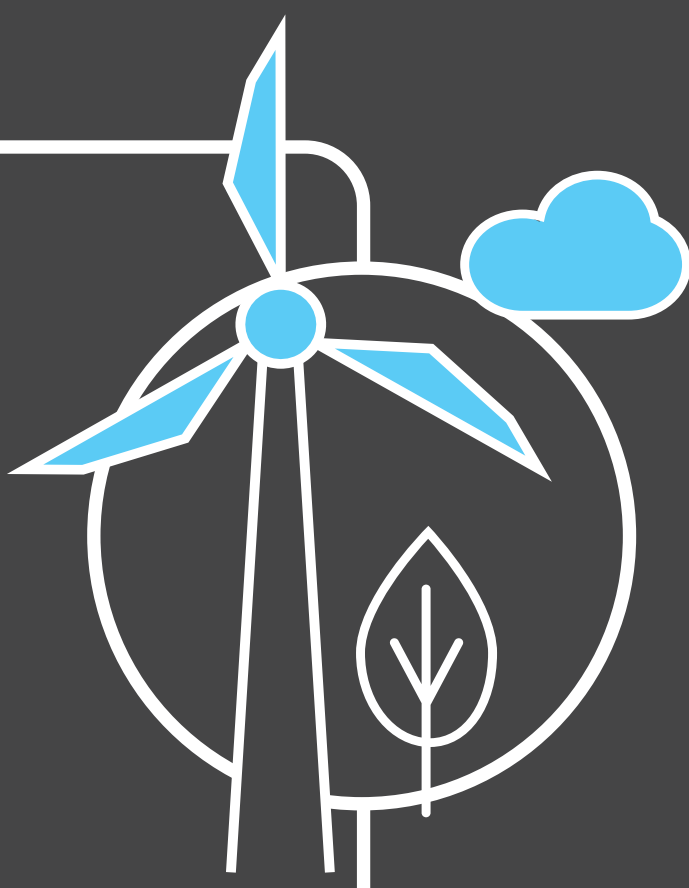
Britain's Electricity Explained: October 2022

ESO



Gas	36.0%
Wind	36.2%
Nuclear	14.2%
Biomass	3.1%
Coal	0.4%
Solar	3.5%
Imports	3.4%
Hydro	2.3%
Storage	0.9%

Zero carbon



57% of electricity came from zero carbon sources
85% peak zero carbon share

Carbon intensity



155 gCO₂/kWh average  Greenest time of the month
 2:00pm on 1st October

Coal



0.4% use this month
 This time **5 years ago** coal usage was **3.6%**
102 consecutive coal free hours

Imports & exports

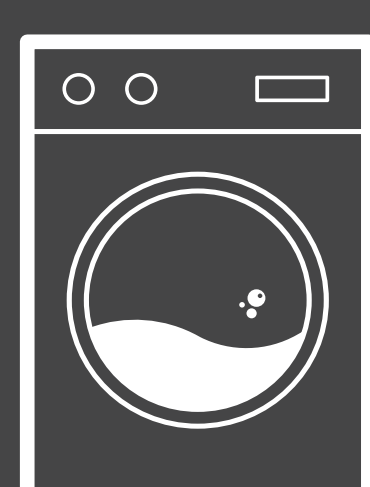


Energy in
813 GWh



Energy out
2313 GWh

Demand



23 TWh run through network (that's 23 billion washing machine cycles).
 Peak demand time was 4:30pm on 1st November.

View in real-time



To view our data in real-time, please download the ESO app for Apple or Android.
 Or visit carbonintensity.org.uk