

National Electricity Transmission System Status Report

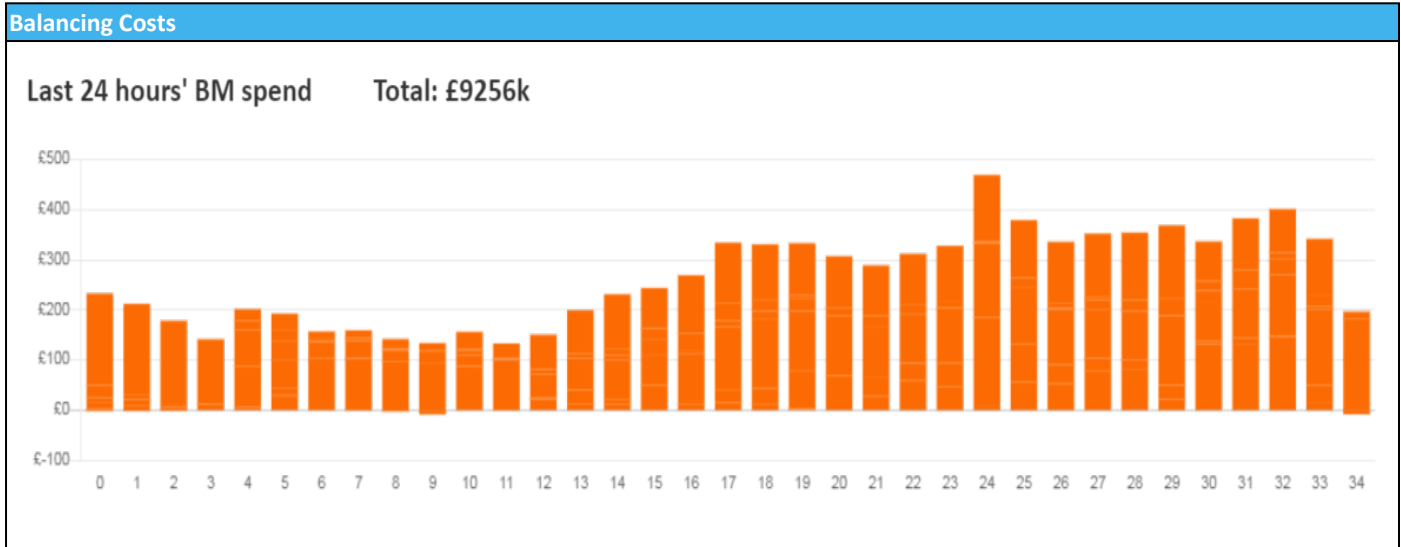


nationalgridESO

National Electricity Transmission System Status Report
Thursday 03 November 2022

Today's High Level Risk Status Forecast for the next 24h			
General Status		Voltage	
Demand		System Inertia	
System Margins		Weather	
Generation		Transmission	
Active Constraints			
System Warning			

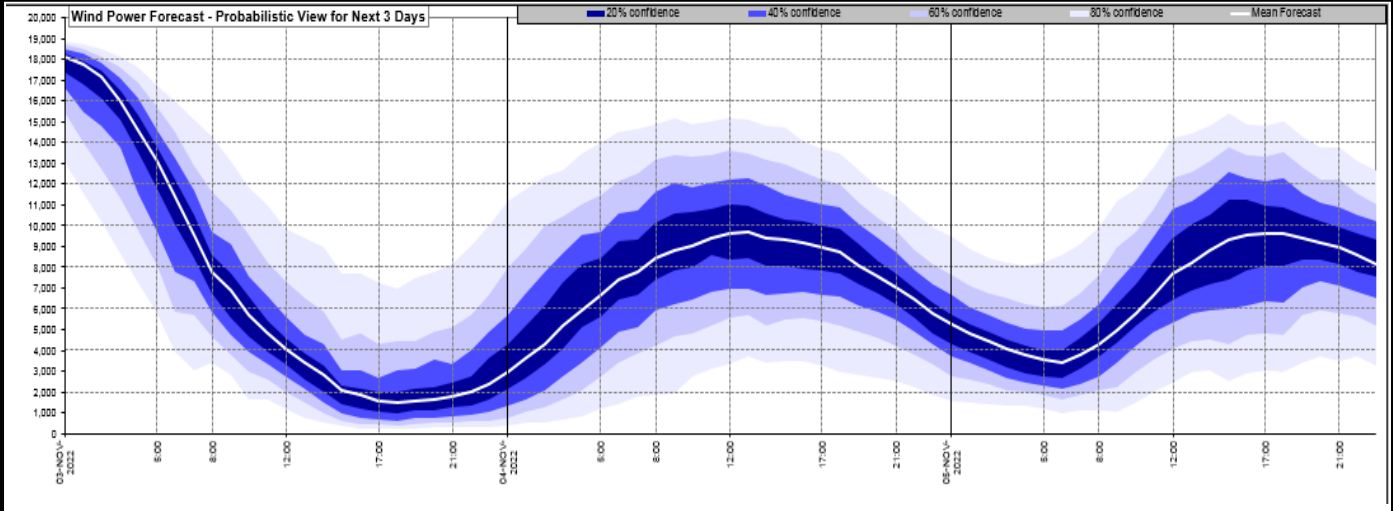
Today's Minimum De-Rated Margin	-36.21 (SP 36)	
Current BMU Largest Loss Risk	Generation	1400 MW
	Demand	1050 MW



Yesterday's Market Summary	
Cash Out Price (Max)	£215.00 (SP 14)
Cash Out Price (Min)	-£59.17 (SP 7, 8)
Peak Demand Yesterday	34,492 MW
Minimum Demand	17943 MW

Interconnector Net Transfer Capacity (MWs)			
Today	Import	Export	Remarks
Netherlands (BritNed)	1100	1133	Fully Available
France (IFA2)	1014	1014	Fully Available
Belgium (Nemo)	1000	1025	Fully Available
Ireland (EWIC)	500	530	Fully Available
France (ElecLink)	1014	1014	Fully Available
France (IFA)	1000	1000	Partially Available
Northern Ireland (MOYLE)	500	500	Fully Available
Norway (NSL)	1400	1400	Fully Available

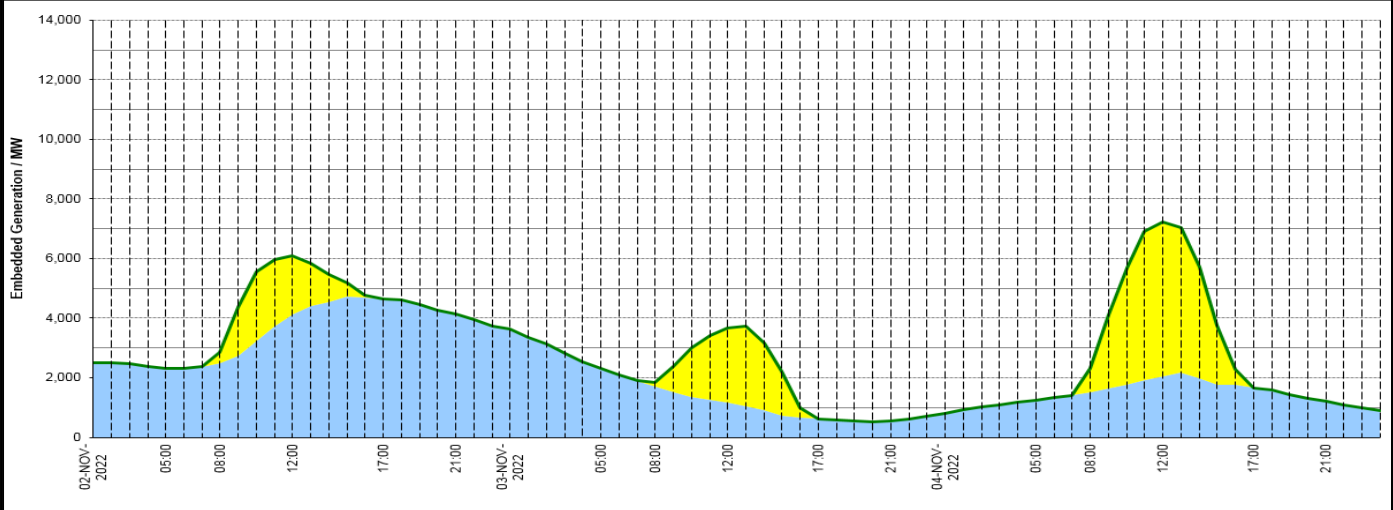
Wind Power Forecast



Expected embedded generation (MWs)

Embedded Generation Forecast

	02-NOV-2022					03-NOV-2022					04-NOV-2022						
	05:00	08:00	12:00	17:00	21:00	00:00	05:00	08:00	12:00	17:00	21:00	00:00	05:00	08:00	12:00	17:00	21:00
Solar (MW)	0	366	1983	0	0	0	0	148	2504	0	0	0	0	776	5177	0	0
Wind (MW)	2302	2499	4122	4635	4130	3624	2304	1699	1159	619	548	806	1237	1525	2050	1668	1199
STOR (MW)	0	0	0	0	0	0	0	0	0	0	0	0	0	0	0	0	0
Total (MW)	2302	2865	6105	4635	4130	3624	2304	1847	3663	619	548	806	1237	2301	7227	1668	1199



Weather	Source	Commentary
Latest forecast (Summary)	Met Office SEPA Natural Resources Wales	<p>Today: Outbreaks of rain, some heavy, across southeast England and East Anglia, clearing through the afternoon. Elsewhere, sunshine and showers, occasionally heavy, becoming frequent later in the southwest, where a risk of thunder. Less windy generally, but coastal gales in places.</p> <p>Tonight: Showers in the west and south, some slow-moving and heavy, with a risk of thunder. Otherwise mostly dry with clear spells and a patchy frost in central and northern areas.</p>
General Weather Concerns e.g. wind, rain, snow, flooding, GB Weather Warnings	Met Office Weather Warnings SEPA Natural Resources Wales	<p>UK Weather Warnings Yellow weather warning in force for England. Affecting East of England, London & South East England</p> <p>Flood Warnings 0 flood warnings and 10 flood alerts are currently in force for England.</p> <p>15 flood warnings and 12 flood alerts are currently in force for Scotland.</p> <p>1 flood warnings and 13 flood alerts are currently in force for Wales.</p>

Contains public sector information licensed under the Open Government Licence v1.0

Further Information	
BM Reports	https://www.bmreports.com
System Balancing Reports	https://www.nationalgrideso.com/balancing-data/system-balancing-reports
Forecast Volumes and Costs	https://www.nationalgrideso.com/balancing-data/forecast-volumes-and-costs
NGESO Insights	https://www.nationalgrideso.com/insights