

# National Electricity Transmission System Status Report

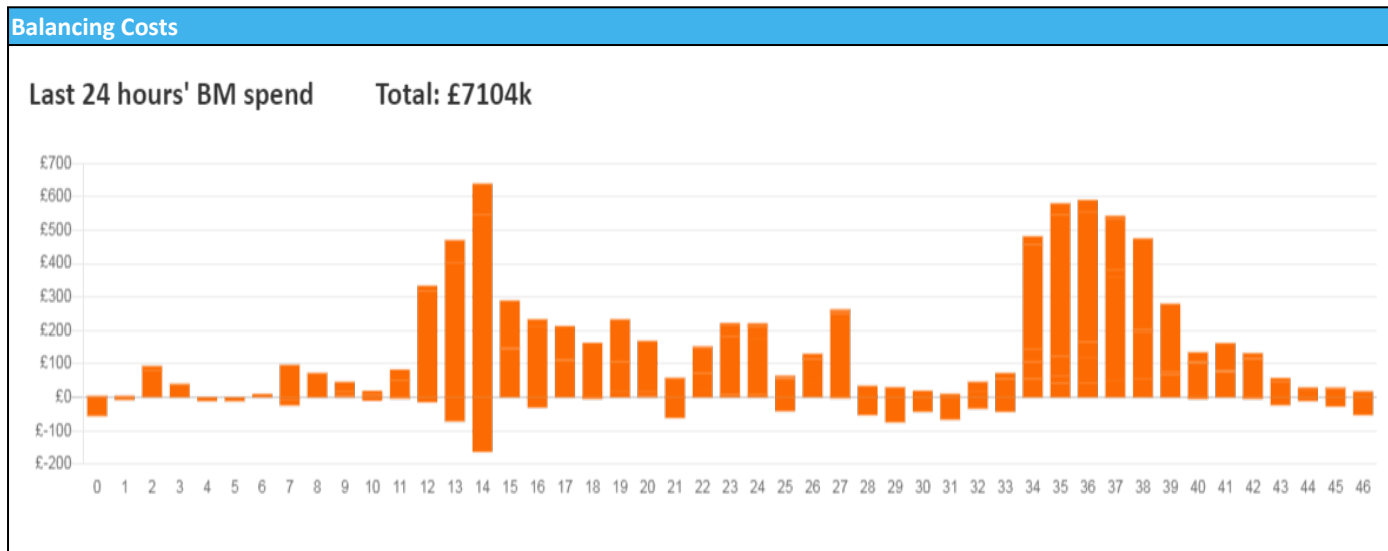


nationalgridESO

**National Electricity Transmission System Status Report**  
Thursday 29 September 2022

Today's High Level Risk Status Forecast for the next 24h			
General Status		Voltage	
Demand		System Inertia	
System Margins		Weather	
Generation		Transmission	
Active Constraints			
<a href="#">System Warning</a>			

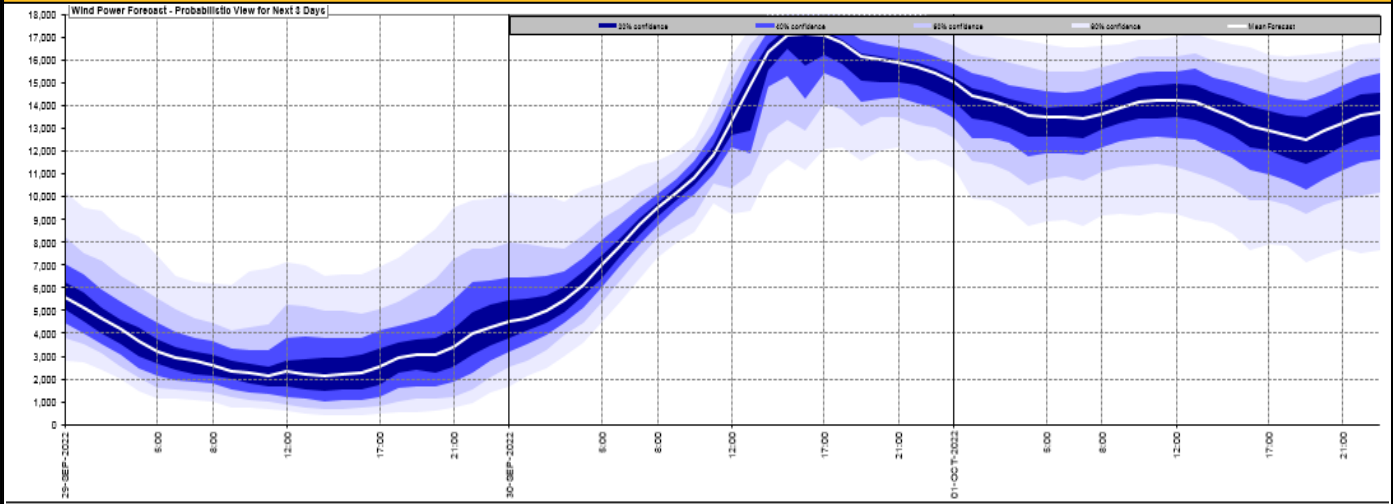
<a href="#">Today's Minimum De-Rated Margin</a>	4657 (SP 39)	
Current BMU Largest Loss Risk	Generation	1300 MW
	Demand	560 MW



Yesterday's Market Summary	
<a href="#">Cash Out Price (Max)</a>	£800.00 (SP 16)
<a href="#">Cash Out Price (Min)</a>	£142.00 (SP 1)
<a href="#">Peak Demand Yesterday</a>	32,780 MW
Minimum Demand	19,114 MW

Interconnector Net Transfer Capacity (MWs)			
Today	Import	Export	Remarks
Netherlands (BritNed)	1100	1133	Fully Available
France (IFA2)	1014	1014	Fully Available
Belgium (Nemo)	1000	1025	Fully Available
Ireland (EWIC)	500	530	Fully Available
France (ElecLink)	1014	1014	Fully Available
France (IFA)	0	0	Planned Outage 19/09/22 to 14/10/22
Northern Ireland (MOYLE)	244	250	Partially Available
Norway (NSL)	1400	1400	Fully Available

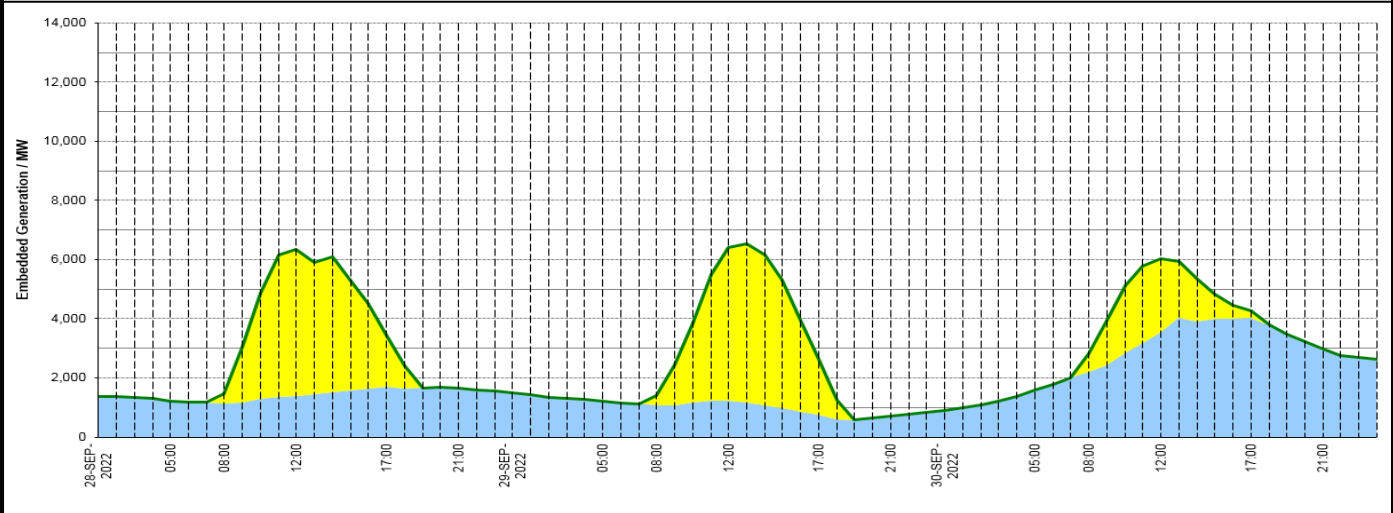
**Wind Power Forecast**



**Expected embedded generation (MWs)**

**Embedded Generation Forecast**

	28-SEP-2022					29-SEP-2022					30-SEP-2022						
	05:00	08:00	12:00	17:00	21:00	00:00	05:00	08:00	12:00	17:00	21:00	00:00	05:00	08:00	12:00	17:00	21:00
Solar (MW)	0	310	4932	1770	0	0	0	330	5168	1885	0	0	0	608	2450	258	0
Wind (MW)	1224	1148	1399	1688	1667	1487	1214	1086	1225	749	712	907	1600	2199	3570	4021	2965
STOR (MW)	0	0	0	0	0	0	0	0	0	0	0	0	0	0	0	0	0
<b>Total (MW)</b>	<b>1224</b>	<b>1458</b>	<b>6331</b>	<b>3458</b>	<b>1667</b>	<b>1487</b>	<b>1214</b>	<b>1416</b>	<b>6393</b>	<b>2634</b>	<b>712</b>	<b>907</b>	<b>1600</b>	<b>2807</b>	<b>6020</b>	<b>4279</b>	<b>2965</b>



Weather	Source	Commentary
Latest forecast (Summary)	<a href="#">Met Office</a> <a href="#">SEPA</a> <a href="#">Natural Resources Wales</a>	<p><b>Today:</b> Cloud and outbreaks of rain across central and southwestern areas clearing away to the south through the morning. Else, another day of sunny spells, but again scattered showers developing.</p> <p><b>Tonight:</b> Showers soon fading, then turning chilly across England and Wales with patchy fog developing. Becoming wet and windy in the far north later, with severe gales in the far northwest</p>
General Weather Concerns e.g. wind, rain, snow, flooding, GB Weather Warnings	<a href="#">Met Office</a> <a href="#">Weather Warnings</a> <a href="#">SEPA</a> <a href="#">Natural Resources Wales</a>	<p><b>UK Weather Warnings</b> No weather warnings are in force for the UK.</p> <p><b>Flood Warnings</b> No flood warnings are currently in force for England. No flood warnings are currently in force for Scotland. No flood warnings are currently in force for Wales.</p>

Contains public sector information licensed under the Open Government Licence v1.0

Further Information	
BM Reports	<a href="https://www.bmreports.com">https://www.bmreports.com</a>
System Balancing Reports	<a href="https://www.nationalgrideso.com/balancing-data/system-balancing-reports">https://www.nationalgrideso.com/balancing-data/system-balancing-reports</a>
Forecast Volumes and Costs	<a href="https://www.nationalgrideso.com/balancing-data/forecast-volumes-and-costs">https://www.nationalgrideso.com/balancing-data/forecast-volumes-and-costs</a>
NGESO Insights	<a href="https://www.nationalgrideso.com/insights">https://www.nationalgrideso.com/insights</a>