

# National Electricity Transmission System Status Report

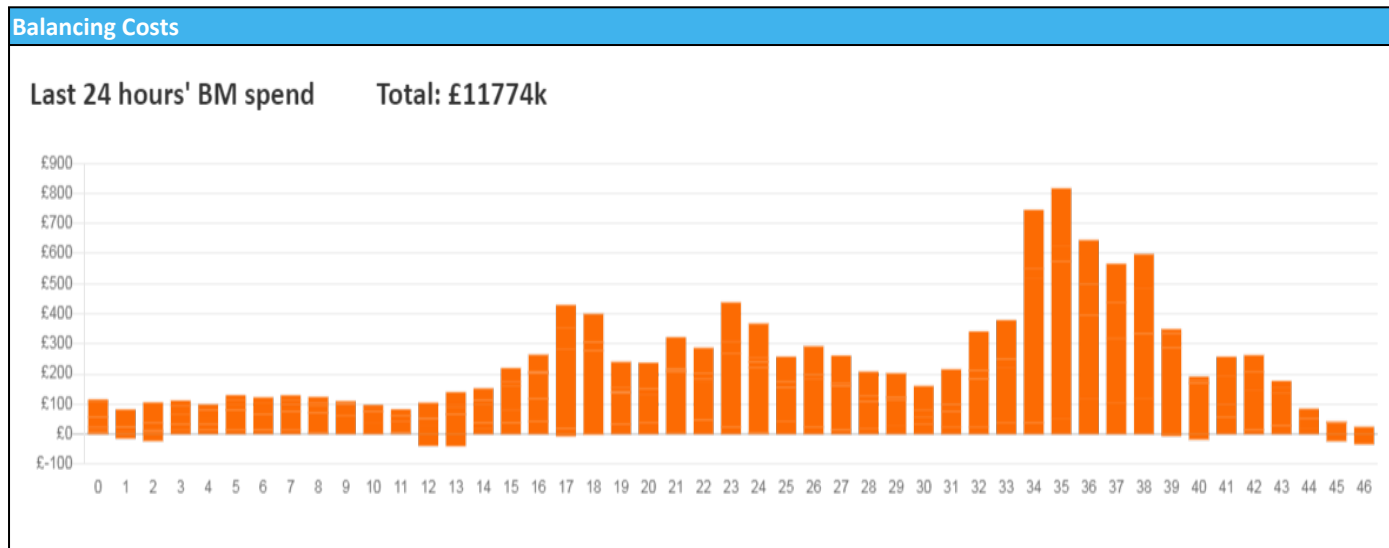


nationalgridESO

National Electricity Transmission System Status Report  
Wednesday 28 September 2022

Today's High Level Risk Status Forecast for the next 24h			
General Status		Voltage	
Demand		System Inertia	
System Margins		Weather	
Generation		Transmission	
Active Constraints			
<a href="#">System Warning</a>			

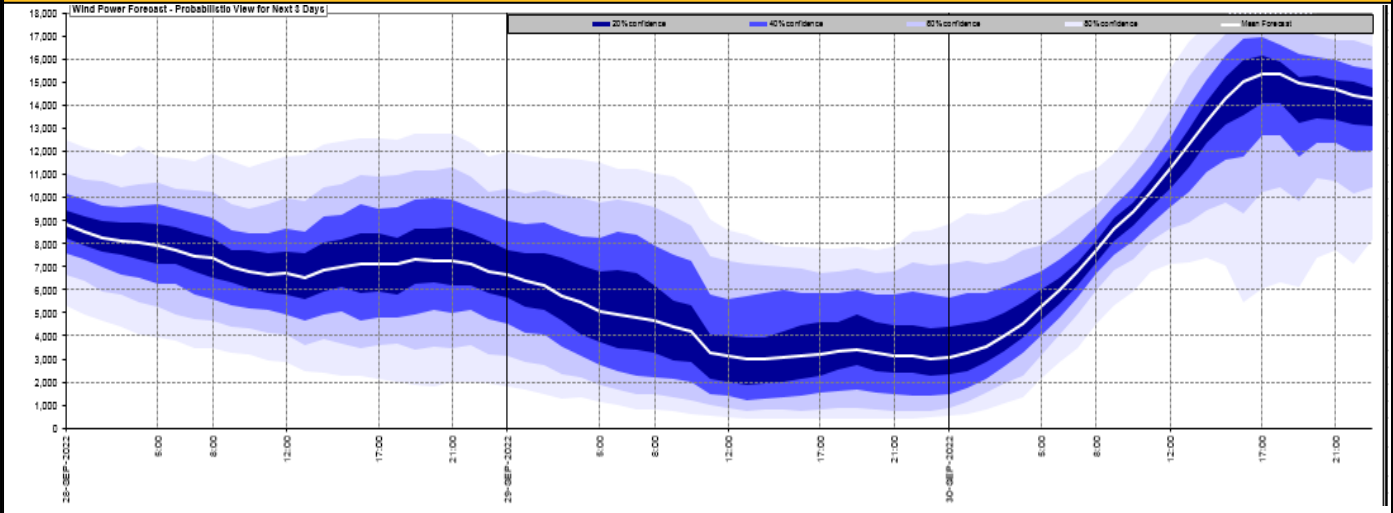
<a href="#">Today's Minimum De-Rated Margin</a>	5334 (SP 41)	
Current BMU Largest Loss Risk	Generation	1300 MW
	Demand	1150 MW



Yesterday's Market Summary	
<a href="#">Cash Out Price (Max)</a>	£500.00 (SP 36,37)
<a href="#">Cash Out Price (Min)</a>	£105.00 (SP 14)
<a href="#">Peak Demand Yesterday</a>	32,636 MW
Minimum Demand	18,225 MW

Interconnector Net Transfer Capacity (MWs)			
Today	Import	Export	Remarks
Netherlands (BritNed)	1100	1133	Fully Available
France (IFA2)	1014	1014	Fully Available
Belgium (Nemo)	1000	1025	Fully Available
Ireland (EWIC)	500	530	Fully Available
France (ElecLink)	1014	1014	Fully Available
France (IFA)	0	0	Planned Outage 19/09/22 to 14/10/22
Northern Ireland (MOYLE)	244	250	Partially Available
Norway (NSL)	1400	1400	Fully Available

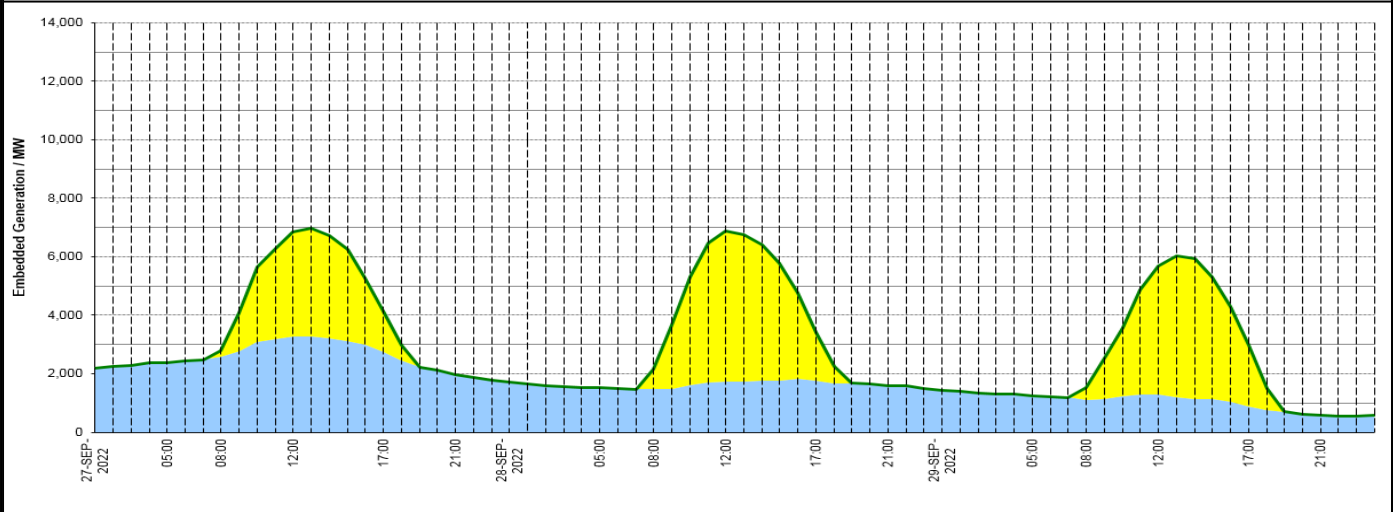
**Wind Power Forecast**



**Expected embedded generation (MWs)**

**Embedded Generation Forecast**

	27-SEP-2022					28-SEP-2022					29-SEP-2022						
	05:00	08:00	12:00	17:00	21:00	00:00	05:00	08:00	12:00	17:00	21:00	00:00	05:00	08:00	12:00	17:00	21:00
Solar (MW)	0	210	3581	1412	0	0	0	672	5171	1650	0	0	0	404	4415	2108	0
Wind (MW)	2390	2578	3278	2726	1968	1715	1524	1480	1720	1755	1606	1439	1258	1118	1278	878	582
STOR (MW)	0	0	0	0	0	0	0	0	0	0	0	0	0	0	0	0	0
<b>Total (MW)</b>	<b>2390</b>	<b>2788</b>	<b>6859</b>	<b>4138</b>	<b>1968</b>	<b>1715</b>	<b>1524</b>	<b>2152</b>	<b>6891</b>	<b>3405</b>	<b>1606</b>	<b>1439</b>	<b>1258</b>	<b>1522</b>	<b>5693</b>	<b>2986</b>	<b>582</b>



Weather	Source	Commentary
Latest forecast (Summary)	<a href="#">Met Office</a> <a href="#">SEPA</a> <a href="#">Natural Resources Wales</a>	<b>Today:</b> A mixture of sunshine and showers, most frequent near northwest facing coasts at first, whilst a few showers will develop inland. Spell of heavier rain and freshening winds for parts of southeast Scotland and northern England later <b>Tonight:</b> Rain clearing the far southwest, but showers continuing in some eastern and western coastal areas, as well as northern Scotland. Some inland areas clear with a touch of grass frost.
General Weather Concerns e.g. wind, rain, snow, flooding, GB Weather Warnings	<a href="#">Met Office</a> <a href="#">Weather Warnings</a> <a href="#">SEPA</a> <a href="#">Natural Resources Wales</a>	<b>UK Weather Warnings</b> No weather warnings are in force for the UK. <b>Flood Warnings</b> No flood warnings are currently in force for England. No flood warnings are currently in force for Scotland. No flood warnings are currently in force for Wales.

Contains public sector information licensed under the Open Government Licence v1.0

Further Information	
BM Reports	<a href="https://www.bmreports.com">https://www.bmreports.com</a>
System Balancing Reports	<a href="https://www.nationalgrideso.com/balancing-data/system-balancing-reports">https://www.nationalgrideso.com/balancing-data/system-balancing-reports</a>
Forecast Volumes and Costs	<a href="https://www.nationalgrideso.com/balancing-data/forecast-volumes-and-costs">https://www.nationalgrideso.com/balancing-data/forecast-volumes-and-costs</a>
NGESO Insights	<a href="https://www.nationalgrideso.com/insights">https://www.nationalgrideso.com/insights</a>