

# National Electricity Transmission System Status Report

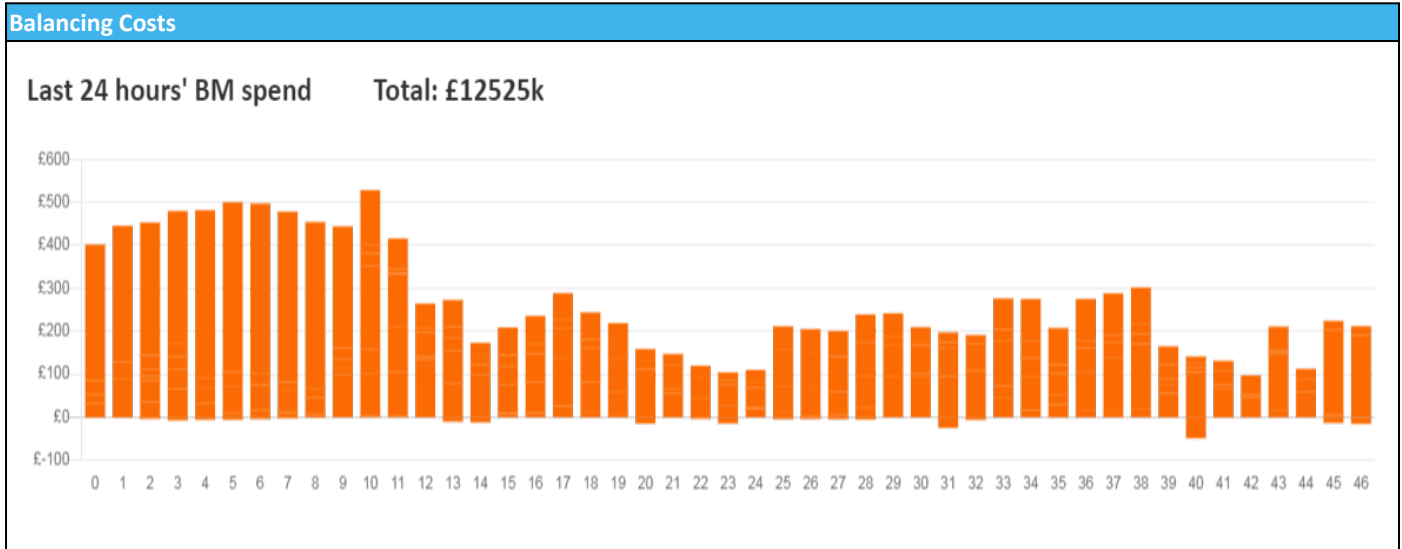


nationalgridESO

National Electricity Transmission System Status Report  
Tuesday 27 September 2022

Today's High Level Risk Status Forecast for the next 24h			
General Status		Voltage	
Demand		System Inertia	
System Margins		Weather	
Generation		Transmission	
Active Constraints			
<a href="#">System Warning</a>			

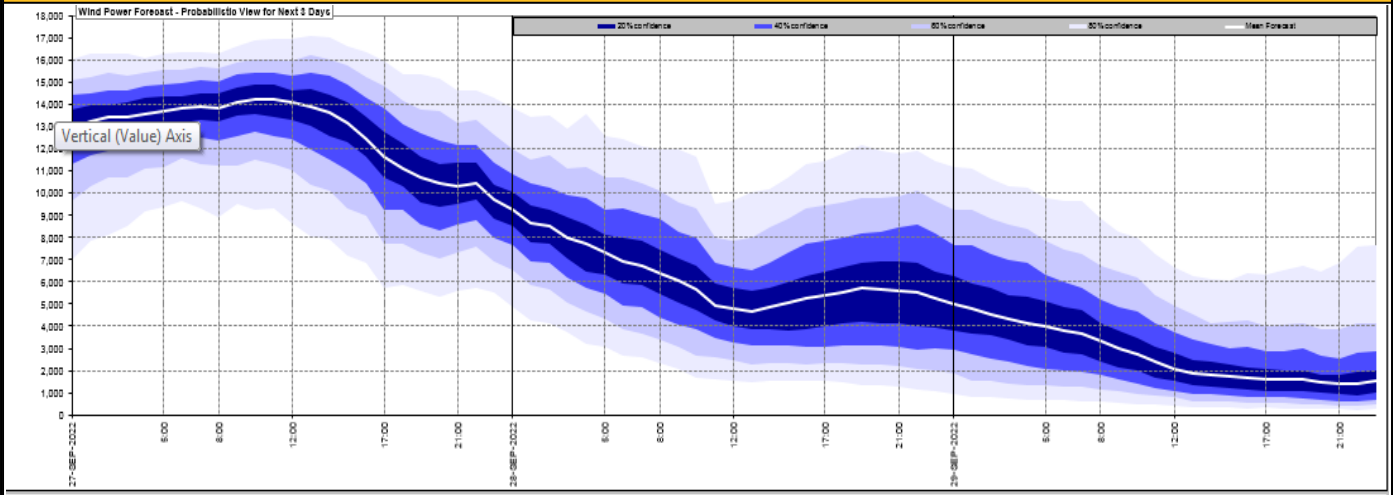
<a href="#">Today's Minimum De-Rated Margin</a>	8246 (SP 38)	
Current BMU Largest Loss Risk	Generation	1500 MW
	Demand	1150 MW



Yesterday's Market Summary	
<a href="#">Cash Out Price (Max)</a>	£300.00 (SP 40)
<a href="#">Cash Out Price (Min)</a>	-£68.73 (SP 8,9)
<a href="#">Peak Demand Yesterday</a>	32,260 MW
Minimum Demand	17,800 MW

Interconnector Net Transfer Capacity (MWs)			
Today	Import	Export	Remarks
Netherlands (BritNed)	1100	1133	Fully Available
France (IFA2)	1014	1014	Fully Available
Belgium (Nemo)	1000	1025	Fully Available
Ireland (EWIC)	500	530	Fully Available
France (ElecLink)	1014	1014	Fully Available
France (IFA)	0	0	Planned Outage 19/09/22 to 14/10/22
Northern Ireland (MOYLE)	244	250	Partially Available
Norway (NSL)	1400	1400	Fully Available

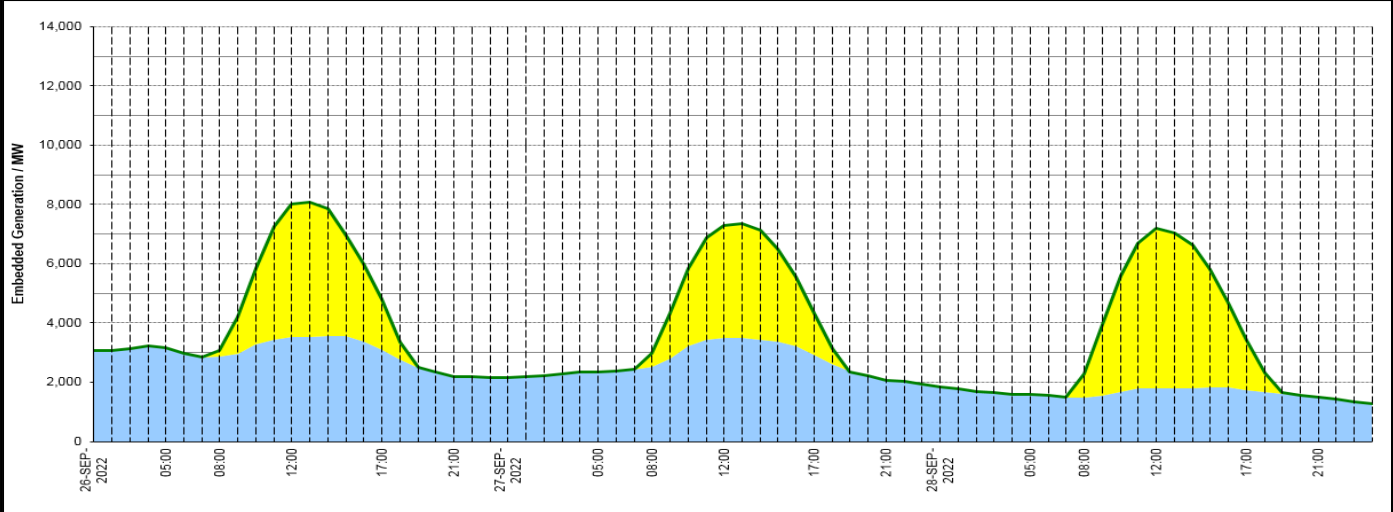
**Wind Power Forecast**



**Expected embedded generation (MWs)**

**Embedded Generation Forecast**

	26-SEP-2022					27-SEP-2022					28-SEP-2022						
	05:00	08:00	12:00	17:00	21:00	00:00	05:00	08:00	12:00	17:00	21:00	00:00	05:00	08:00	12:00	17:00	21:00
Solar (MW)	0	209	4485	1692	0	0	0	464	3796	1408	0	0	0	813	5395	1655	0
Wind (MW)	3152	2866	3534	3102	2193	2159	2347	2505	3497	2927	2074	1835	1593	1475	1803	1748	1488
STOR (MW)	0	0	0	0	0	0	0	0	0	0	0	0	0	0	0	0	0
<b>Total (MW)</b>	<b>3152</b>	<b>3075</b>	<b>8019</b>	<b>4794</b>	<b>2193</b>	<b>2159</b>	<b>2347</b>	<b>2969</b>	<b>7293</b>	<b>4335</b>	<b>2074</b>	<b>1835</b>	<b>1593</b>	<b>2288</b>	<b>7198</b>	<b>3403</b>	<b>1488</b>



Weather	Source	Commentary
Latest forecast (Summary)	<a href="#">Met Office</a> <a href="#">SEPA</a> <a href="#">Natural Resources Wales</a>	<b>Today:</b> Sunshine and showers, heaviest in northeast Scotland, and quite frequent in areas exposed to the northwesterly winds, particularly north Wales and the west Midlands. Some inland areas mostly dry. Wet afternoon in far southwest. Feeling chilly, although winds slowly easing. <b>Tonight:</b> Rain clearing the far southwest, but showers continuing in some eastern and western coastal areas, as well as northern Scotland. Some inland areas clear with a touch of grass frost.
General Weather Concerns e.g. wind, rain, snow, flooding, GB Weather Warnings	<a href="#">Met Office</a> <a href="#">Weather Warnings</a> <a href="#">SEPA</a> <a href="#">Natural Resources Wales</a>	<b>UK Weather Warnings</b> No weather warnings are in force for the UK. <b>Flood Warnings</b> 11 flood warnings are currently in force for England.  No flood warnings are currently in force for Scotland.  No flood warnings are currently in force for Wales.

Contains public sector information licensed under the Open Government Licence v1.0

Further Information	
BM Reports	<a href="https://www.bmreports.com">https://www.bmreports.com</a>
System Balancing Reports	<a href="https://www.nationalgrideso.com/balancing-data/system-balancing-reports">https://www.nationalgrideso.com/balancing-data/system-balancing-reports</a>
Forecast Volumes and Costs	<a href="https://www.nationalgrideso.com/balancing-data/forecast-volumes-and-costs">https://www.nationalgrideso.com/balancing-data/forecast-volumes-and-costs</a>
NGESO Insights	<a href="https://www.nationalgrideso.com/insights">https://www.nationalgrideso.com/insights</a>