

National Electricity Transmission System Status Report

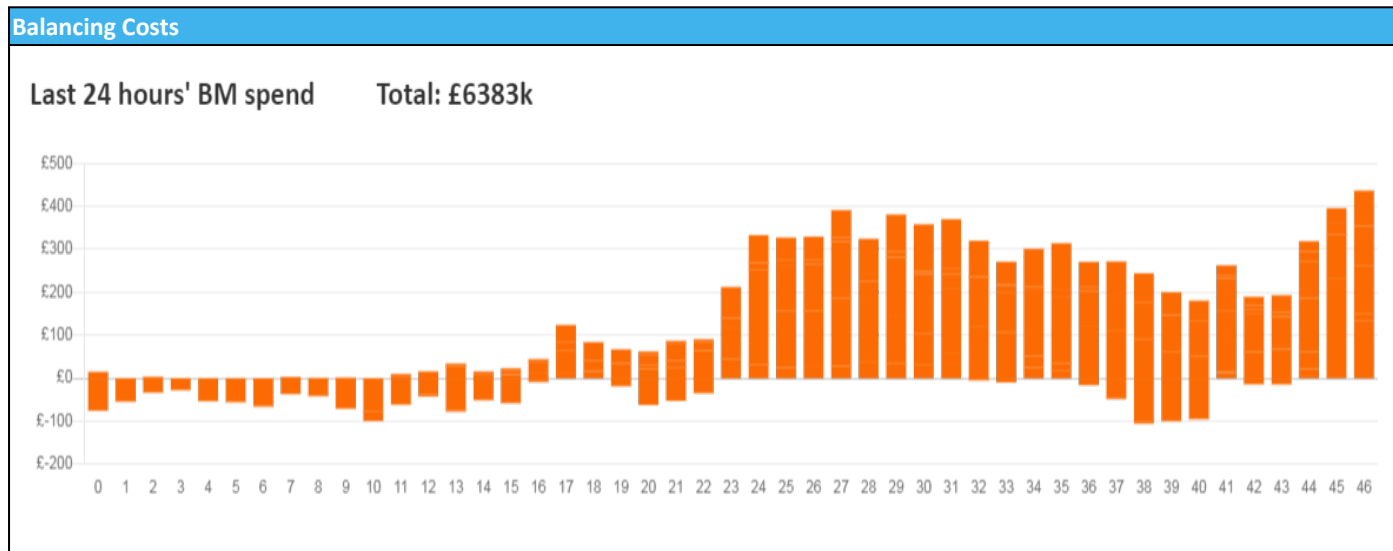


nationalgridESO

National Electricity Transmission System Status Report
Monday 26 September 2022

Today's High Level Risk Status Forecast for the next 24h			
General Status		Voltage	
Demand		System Inertia	
System Margins		Weather	
Generation		Transmission	
Active Constraints			
System Warning			

Today's Minimum De-Rated Margin	10,907 (SP 40)	
Current BMU Largest Loss Risk	Generation	1400 MW
	Demand	1150 MW



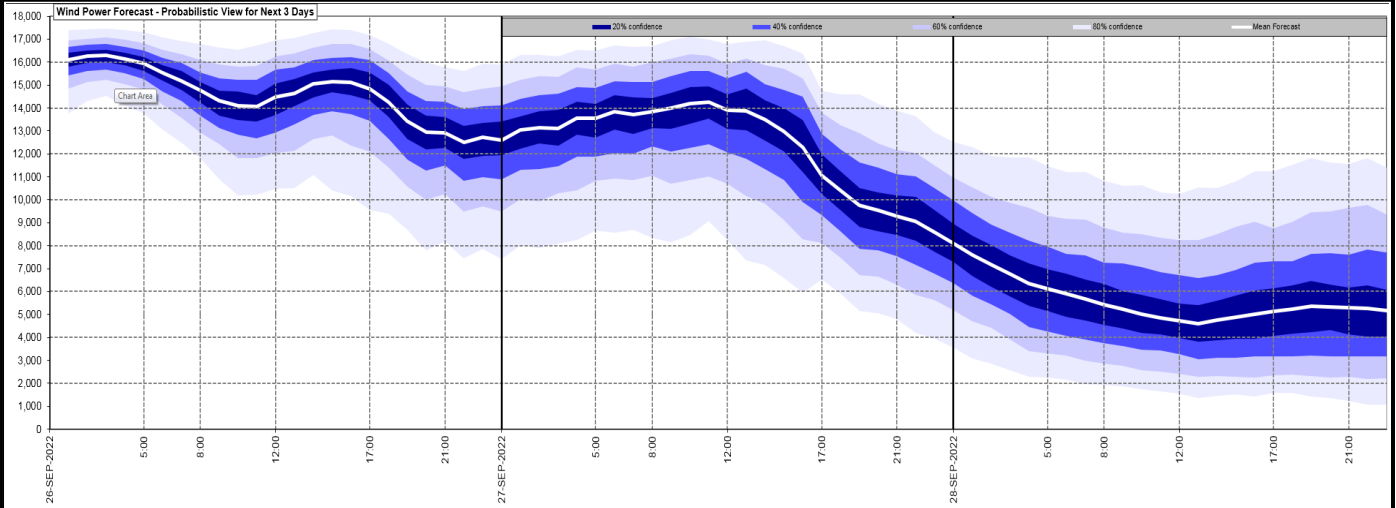
Yesterday's Market Summary

Cash Out Price (Max)	£269.50 (SP 19)
Cash Out Price (Min)	£111.86 (SP 12)
Peak Demand Yesterday	33,649 MW
Minimum Demand	17,251 MW

Interconnector Net Transfer Capacity (MWs)

Today	Import	Export	Remarks
Netherlands (BritNed)	1100	1133	Fully Available
France (IFA2)	1014	1014	Fully Available
Belgium (Nemo)	1000	1025	Fully Available
Ireland (EWIC)	500	530	Fully Available
France (ElecLink)	1014	1014	Fully Available
France (IFA)	0	0	Planned Outage 19/09/22 to 14/10/22
Northern Ireland (MOYLE)	244	250	Partially Available
Norway (NSL)	1400	1400	Fully Available

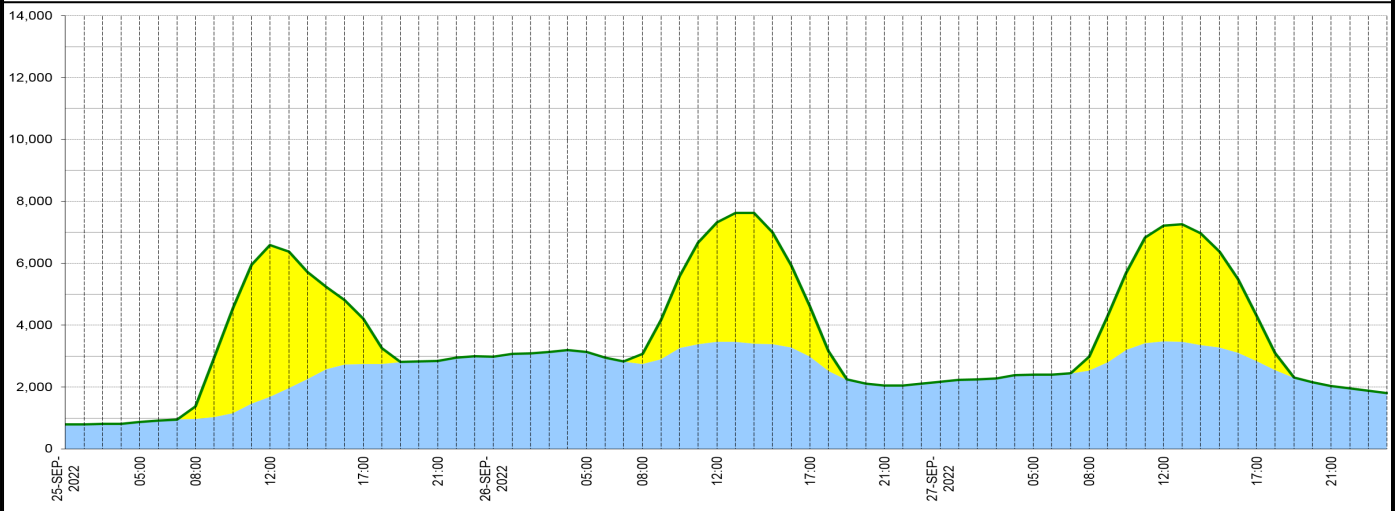
Wind Power Forecast



Expected embedded generation (MWs)

Embedded Generation Forecast

	25-SEP-2022					26-SEP-2022					27-SEP-2022						
	05:00	08:00	12:00	17:00	21:00	00:00	05:00	08:00	12:00	17:00	21:00	00:00	05:00	08:00	12:00	17:00	21:00
Solar (MW)	0	405	4909	1468	0	0	0	315	3866	1611	0	0	0	459	3739	1470	0
Wind (MW)	877	972	1687	2743	2841	2977	3126	2750	3462	2988	2051	2173	2403	2525	3476	2834	2032
STOR (MW)	0	0	0	0	0	0	0	0	0	0	0	0	0	0	0	0	0
Total (MW)	877	1377	6596	4211	2841	2977	3126	3065	7328	4599	2051	2173	2403	2984	7215	4304	2032



Weather	Source	Commentary
Latest forecast (Summary)	Met Office SEPA Natural Resources Wales	<p>Today: Rain soon clearing southern England, then sunny spells and scattered showers, more frequent in the north and in coastal areas exposed to the northwest, some sheltered inland areas seeing comparatively few. Windy; feeling colder, especially in the north and east.</p> <p>Tonight: Some clear spells for most places, but showers continuing in areas exposed to the northwest, some running inland from Cheshire across the Midlands. Heavier showers affecting northern Scotland. Chilly and breezy.</p>
General Weather Concerns e.g. wind, rain, snow, flooding, GB Weather Warnings	Met Office Weather Warnings SEPA Natural Resources Wales	<p>UK Weather Warnings No weather warnings are in force for the UK.</p> <p>Flood Warnings No flood warnings are currently in force for England.</p> <p>No flood warnings are currently in force for Scotland.</p> <p>No flood warnings are currently in force for Wales.</p>

Contains public sector information licensed under the Open Government Licence v1.0

Further Information	
BM Reports	https://www.bmreports.com
System Balancing Reports	https://www.nationalgrideso.com/balancing-data/system-balancing-reports
Forecast Volumes and Costs	https://www.nationalgrideso.com/balancing-data/forecast-volumes-and-costs
NGESO Insights	https://www.nationalgrideso.com/insights