

# National Electricity Transmission System Status Report

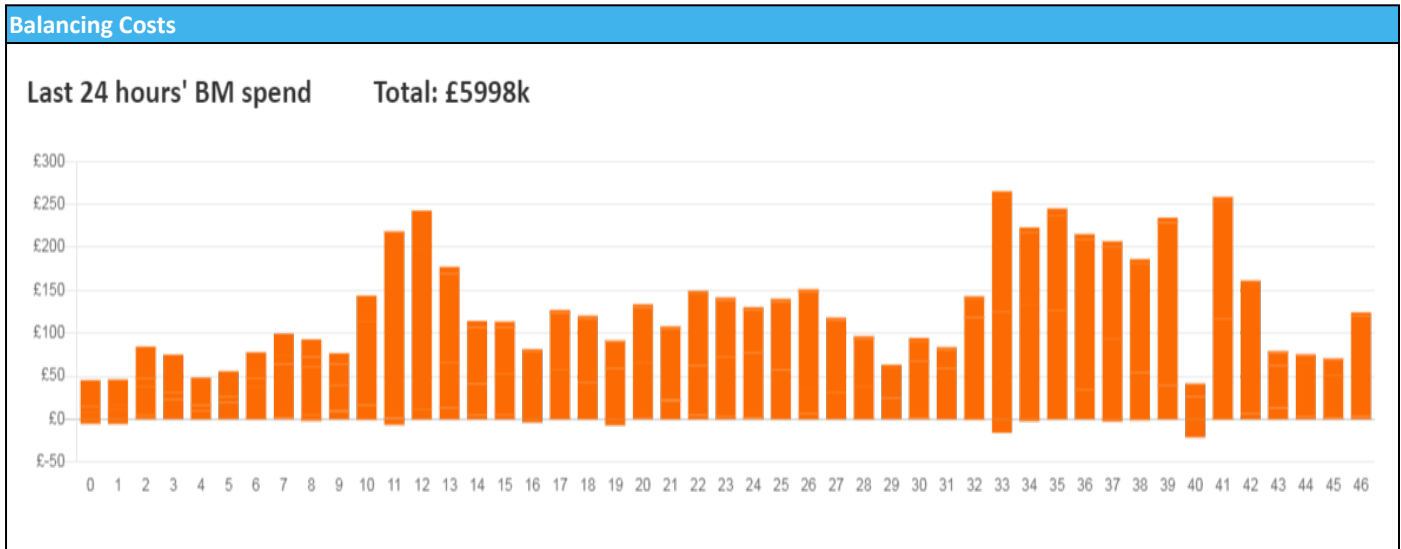


nationalgridESO

National Electricity Transmission System Status Report  
Friday 23 September 2022

Today's High Level Risk Status Forecast for the next 24h			
General Status		Voltage	
Demand		System Inertia	
System Margins		Weather	
Generation		Transmission	
Active Constraints			
<a href="#">System Warning</a>			

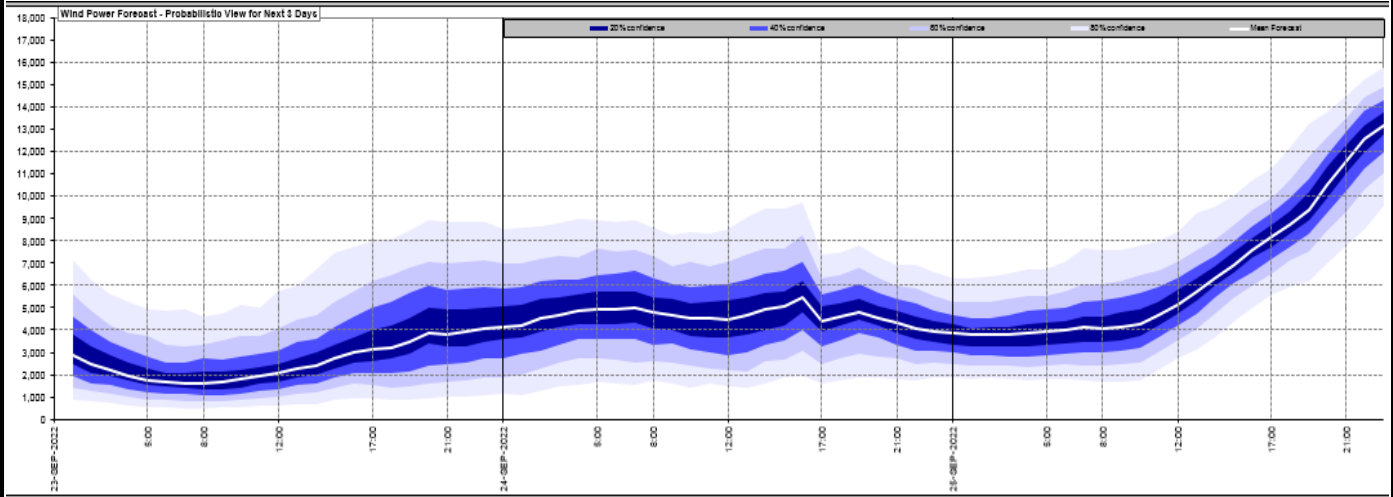
<a href="#">Today's Minimum De-Rated Margin</a>	3,181 (SP 40)	
Current BMU Largest Loss Risk	Generation	1300 MW
	Demand	1050 MW



Yesterday's Market Summary	
<a href="#">Cash Out Price (Max)</a>	£662.76 (SP 37)
<a href="#">Cash Out Price (Min)</a>	£155.30 (SP 2 & SP 3)
<a href="#">Peak Demand Yesterday</a>	34,058 MW
Minimum Demand	18,290 MW

Interconnector Net Transfer Capacity (MWs)			
Today	Import	Export	Remarks
Netherlands (BritNed)	0	0	On Outage 05:00 19/09/22 to 22:00 23/09/22
France (IFA2)	1014	1014	Fully Available
Belgium (Nemo)	0	0	On Outage 06:00 20/09/22 to 22:00 24/09/22
Ireland (EWIC)	500	530	Fully Available
France (ElecLink)	1014	1014	Fully Available
France (IFA)	0	0	On Outage 06:00 19/09/22 to 14/10/22
Northern Ireland (MOYLE)	244	250	Partially Available
Norway (NSL)	1400	1400	Fully Available

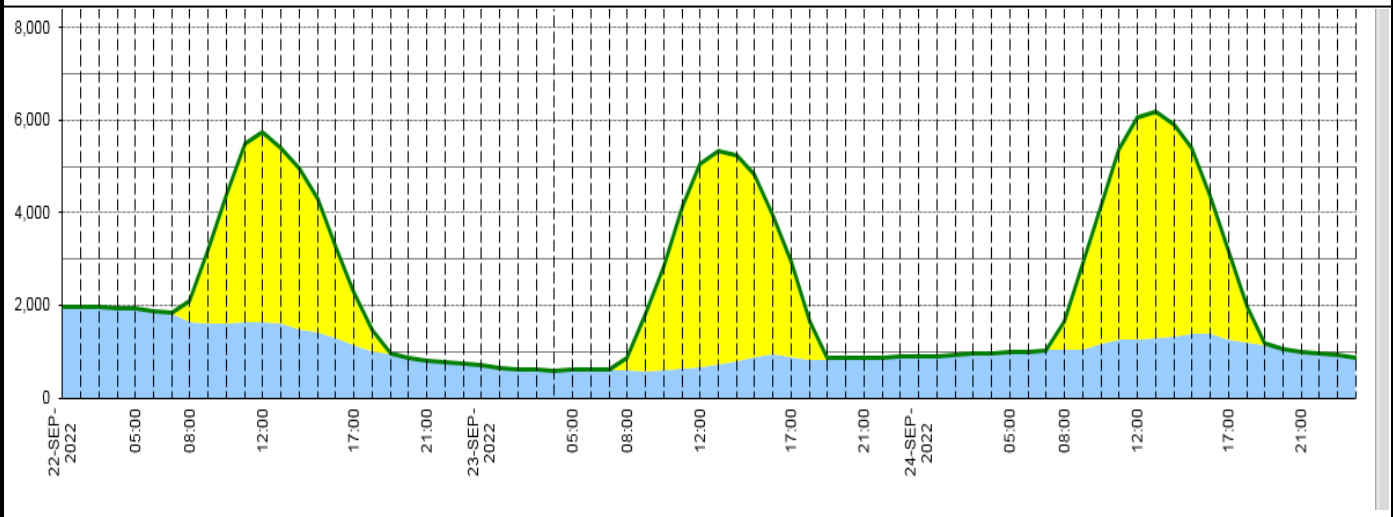
### Wind Power Forecast



### Expected embedded generation (MWs)

#### Embedded Generation Forecast

	22-SEP-2022					23-SEP-2022					24-SEP-2022						
	05:00	08:00	12:00	17:00	21:00	00:00	05:00	08:00	12:00	17:00	21:00	00:00	05:00	08:00	12:00	17:00	21:00
Solar (MW)	0	462	4108	1148	0	0	0	285	4384	2051	0	0	0	632	4778	1909	0
Wind (MW)	1923	1640	1654	1136	810	701	605	598	665	889	854	891	992	1025	1269	1250	1009
STOR (MW)	0	0	0	0	0	0	0	0	0	0	0	0	0	0	0	0	0
<b>Total (MW)</b>	<b>1923</b>	<b>2102</b>	<b>5762</b>	<b>2284</b>	<b>810</b>	<b>701</b>	<b>605</b>	<b>883</b>	<b>5049</b>	<b>2940</b>	<b>854</b>	<b>891</b>	<b>992</b>	<b>1657</b>	<b>6047</b>	<b>3159</b>	<b>1009</b>



Weather	Source	Commentary
Latest forecast (Summary)	<a href="#">Met Office</a> <a href="#">SEPA</a> <a href="#">Natural Resources Wales</a>	<p><b>Today:</b> Outbreaks of rain across southeast England and East Anglia, heavy in places, especially near coasts becoming confined to the far southeast and central southern coastal counties by evening. Sunny spells elsewhere with a scattering of showers, especially in the northwest.</p> <p><b>Tonight:</b> Showery rain, some of it heavy, continuing across parts of the far southeast. Clear spells elsewhere but with scattered showers in the north and west. Chilly away from the southeast.</p>
General Weather Concerns e.g. wind, rain, snow, flooding, GB Weather Warnings	<a href="#">Met Office</a> <a href="#">Weather Warnings</a> <a href="#">SEPA</a> <a href="#">Natural Resources Wales</a>	<p><b>UK Weather Warnings</b> No weather warnings are in force for the UK.</p> <p><b>Flood Warnings</b> No flood warnings are currently in force for England.  No flood warnings are currently in force for Scotland.  No flood warnings are currently in force for Wales.</p>

Contains public sector information licensed under the Open Government Licence v1.0

Further Information	
BM Reports	<a href="https://www.bmreports.com">https://www.bmreports.com</a>
System Balancing Reports	<a href="https://www.nationalgrideso.com/balancing-data/system-balancing-reports">https://www.nationalgrideso.com/balancing-data/system-balancing-reports</a>
Forecast Volumes and Costs	<a href="https://www.nationalgrideso.com/balancing-data/forecast-volumes-and-costs">https://www.nationalgrideso.com/balancing-data/forecast-volumes-and-costs</a>
NGESO Insights	<a href="https://www.nationalgrideso.com/insights">https://www.nationalgrideso.com/insights</a>