

**National Electricity  
Transmission System Status Report**

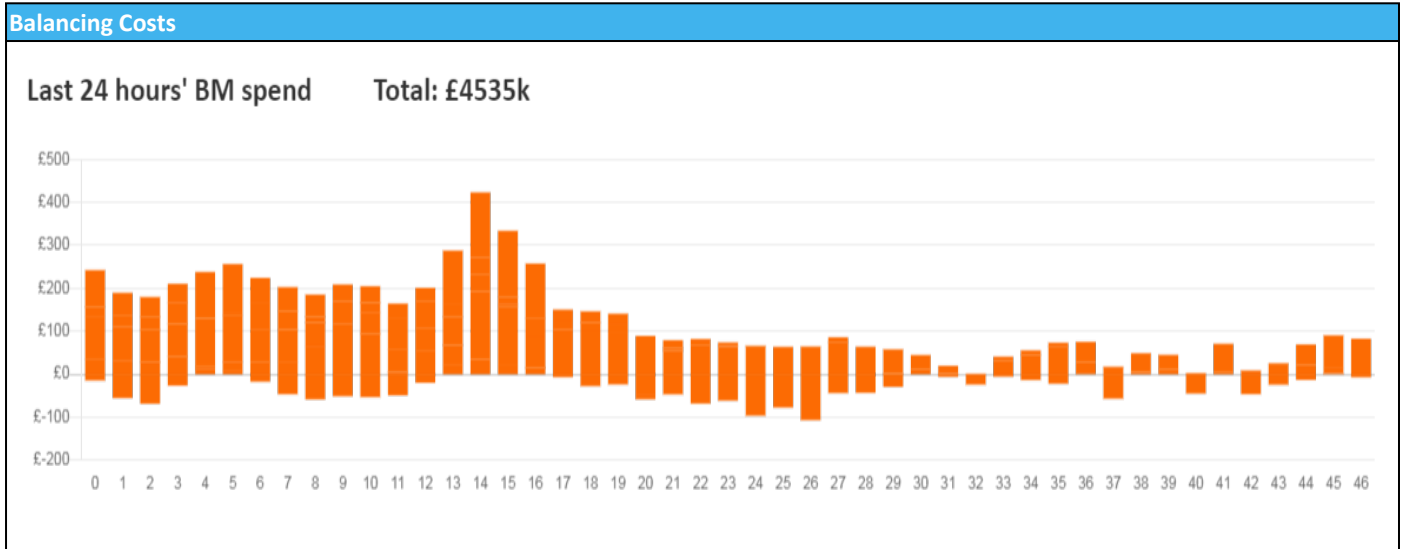


national**grid**ESO

National Electricity Transmission System Status Report  
Saturday 10 September 2022

Today's High Level Risk Status Forecast for the next 24h			
General Status		Voltage	
Demand		System Inertia	
System Margins		Weather	
Generation		Transmission	
Active Constraints			
<a href="#">System Warning</a>			

<a href="#">Today's Minimum De-Rated Margin</a>	4021 (SP 37)	
Current BMU Largest Loss Risk	Generation	1500 MW
	Demand	750 MW



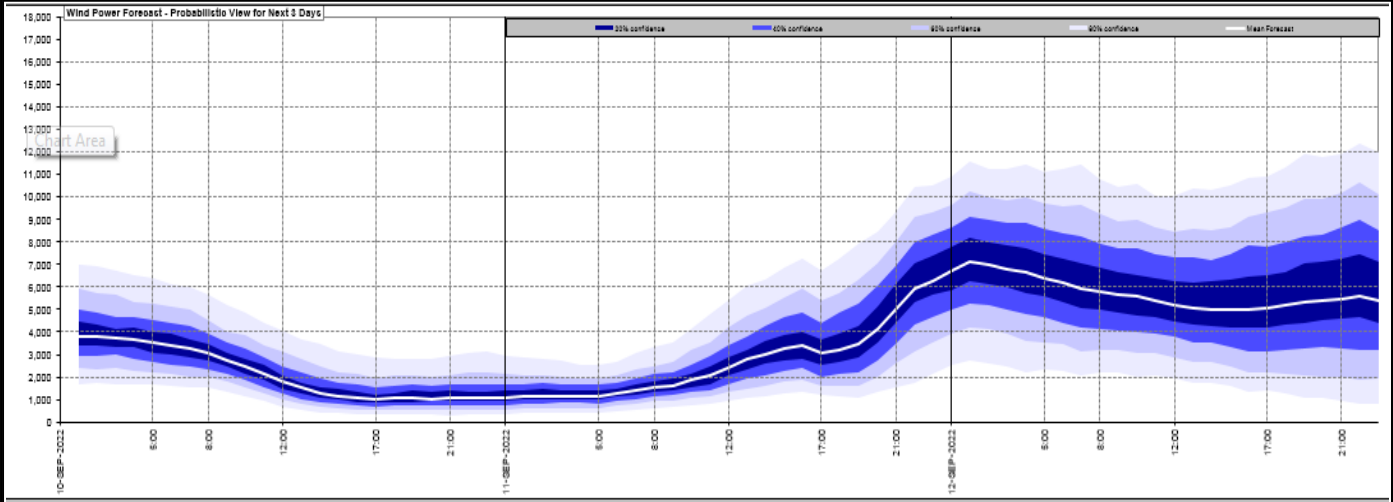
**Yesterday's Market Summary**

<a href="#">Cash Out Price (Max)</a>	£471 (SP 38)
<a href="#">Cash Out Price (Min)</a>	£120 (SP 22)
<a href="#">Peak Demand Yesterday</a>	34,623MW
Minimum Demand	17,528 MW

**Interconnector Net Transfer Capacity (MWs)**

Today	Import	Export	Remarks
Netherlands (BritNed)	1100	1133	Fully Available
France (IFA2)	1014	1014	Fully Available
Belgium (Nemo)	1000	1025	Fully Available
Ireland (EWIC)	500	530	Fully Available
France (ElecLink)	1014	1014	Fully Available
France (IFA)	1000	1000	Partially Available
Northern Ireland (MOYLE)	244	250	Partially Available
Norway (NSL)	1400	1400	Fully Available

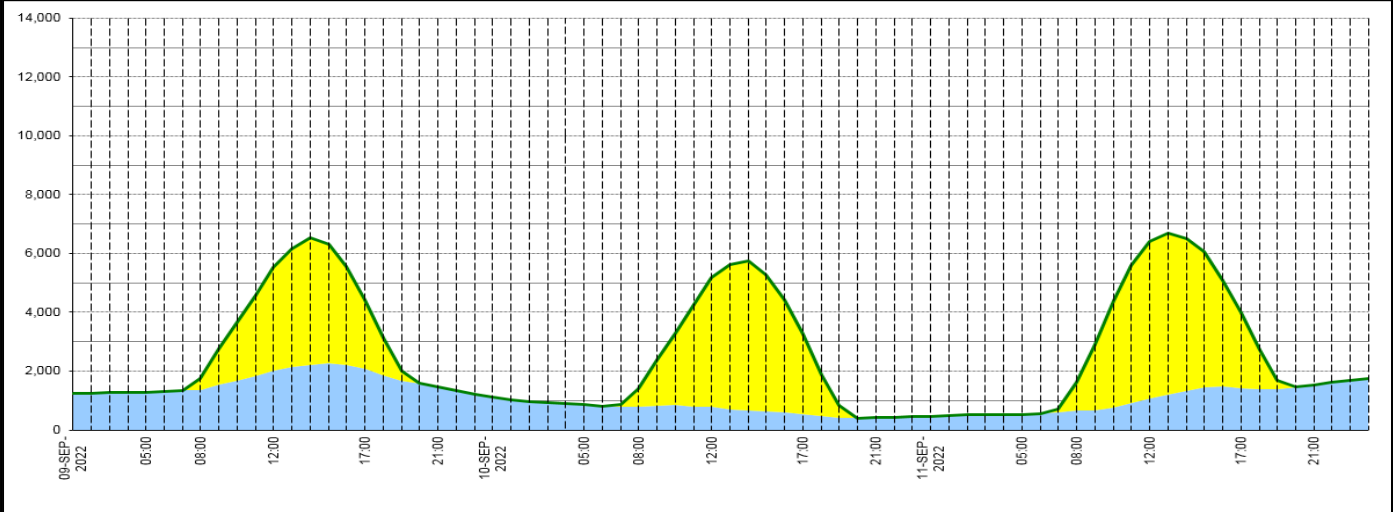
### Wind Power Forecast



### Expected embedded generation (MWs)

#### Embedded Generation Forecast

	09-SEP-2022					10-SEP-2022					11-SEP-2022						
	05:00	08:00	12:00	17:00	21:00	00:00	05:00	08:00	12:00	17:00	21:00	00:00	05:00	08:00	12:00	17:00	21:00
Solar (MW)	0	395	3513	2323	0	0	0	615	4395	2721	0	0	0	940	5348	2565	0
Wind (MW)	1264	1342	2019	2091	1465	1104	853	783	774	534	411	471	524	670	1060	1420	1541
STOR (MW)	0	0	0	0	0	0	0	0	0	0	0	0	0	0	0	0	0
<b>Total (MW)</b>	<b>1264</b>	<b>1737</b>	<b>5532</b>	<b>4414</b>	<b>1465</b>	<b>1104</b>	<b>853</b>	<b>1398</b>	<b>5169</b>	<b>3255</b>	<b>411</b>	<b>471</b>	<b>524</b>	<b>1610</b>	<b>6408</b>	<b>3985</b>	<b>1541</b>



Weather	Source	Commentary
Latest forecast (Summary)	<a href="#">Met Office</a> <a href="#">SEPA</a> <a href="#">Natural Resources Wales</a>	<p><b>Today:</b> A cloudy start for many, but sunny spells developing, especially in the west and northwest. Some patchy rain affecting southern Scotland and northern England, whilst a few heavy showers are likely to develop across eastern England.</p> <p><b>Tonight:</b> Most parts dry with clear spells. Turning chilly with a few mist and fog patches developing. Cloud and rain reaching the far northwest and far southwest towards dawn.</p>
General Weather Concerns e.g. wind, rain, snow, flooding, GB Weather Warnings	<a href="#">Met Office</a> <a href="#">Weather Warnings</a> <a href="#">SEPA</a> <a href="#">Natural Resources Wales</a>	<p><b>UK Weather Warnings</b> None</p> <p><b>Flood Warnings</b> 2 Flood Alerts in Scotland 4 Flood Alerts in England 0 Flood Alerts in Wales</p>

Contains public sector information licensed under the Open Government Licence v1.0

Further Information	
BM Reports	<a href="https://www.bmreports.com">https://www.bmreports.com</a>
System Balancing Reports	<a href="https://www.nationalgrideso.com/balancing-data/system-balancing-reports">https://www.nationalgrideso.com/balancing-data/system-balancing-reports</a>
Forecast Volumes and Costs	<a href="https://www.nationalgrideso.com/balancing-data/forecast-volumes-and-costs">https://www.nationalgrideso.com/balancing-data/forecast-volumes-and-costs</a>
NGESO Insights	<a href="https://www.nationalgrideso.com/insights">https://www.nationalgrideso.com/insights</a>