

**National Electricity  
Transmission System Status Report**

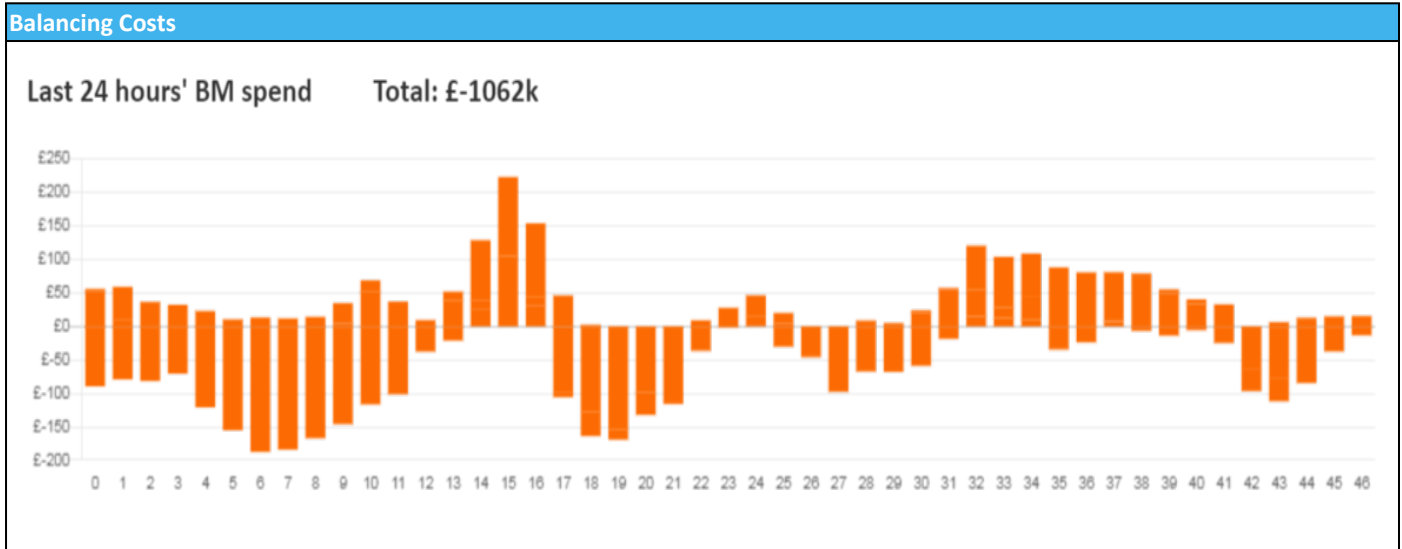


national**grid**ESO

National Electricity Transmission System Status Report  
Thursday 01 September 2022

Today's High Level Risk Status Forecast for the next 24h			
General Status		Voltage	
Demand		System Inertia	
System Margins		Weather	
Generation		Transmission	
Active Constraints			
<a href="#">System Warning</a>			

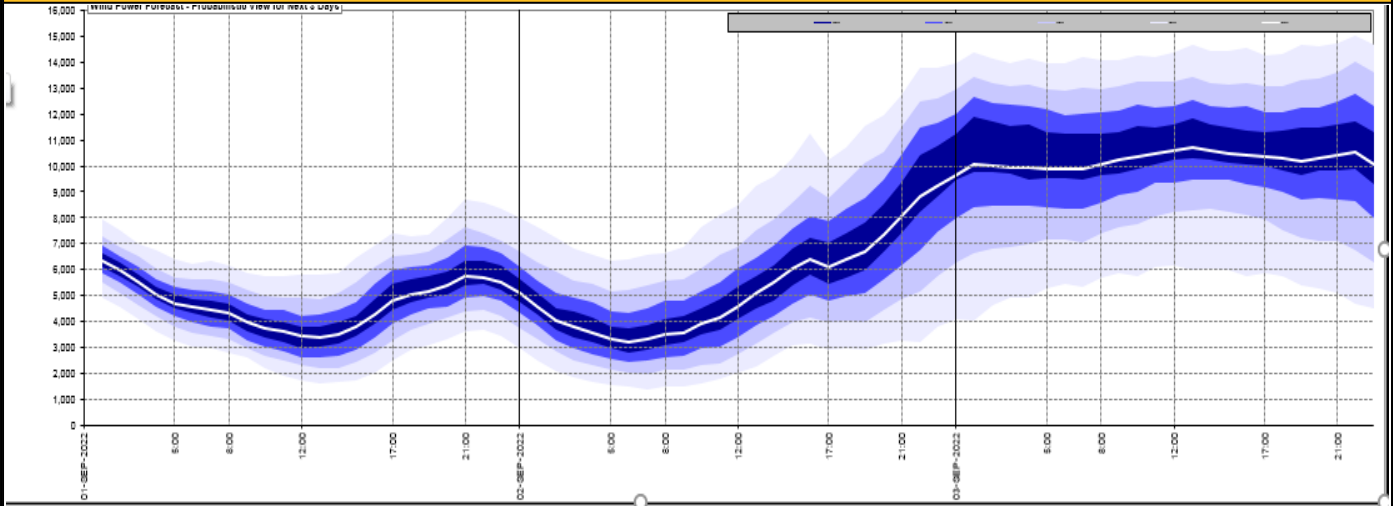
<a href="#">Today's Minimum De-Rated Margin</a>	3107 (SP 39)	
Current BMU Largest Loss Risk	Generation	1500 MW
	Demand	1150 MW



Yesterday's Market Summary	
<a href="#">Cash Out Price (Max)</a>	£520.00 (SP39)
<a href="#">Cash Out Price (Min)</a>	£150.00 (SP 3,4,47,48)
<a href="#">Peak Demand Yesterday</a>	34.106MW
Minimum Demand	18,510 MW

Interconnector Net Transfer Capacity (MWs)			
Today	Import	Export	Remarks
Netherlands (BritNed)	1100	1133	Fully Available
France (IFA2)	1014	1014	Fully Available
Belgium (Nemo)	1000	1025	Fully Available
Ireland (EWIC)	500	530	Fully Available
France (ElecLink)	1014	1014	Fully Available
France (IFA)	1000	1000	Partially Available
Northern Ireland (MOYLE)	244	250	Partially Available
Norway (NSL)	1400	1400	Fully Available

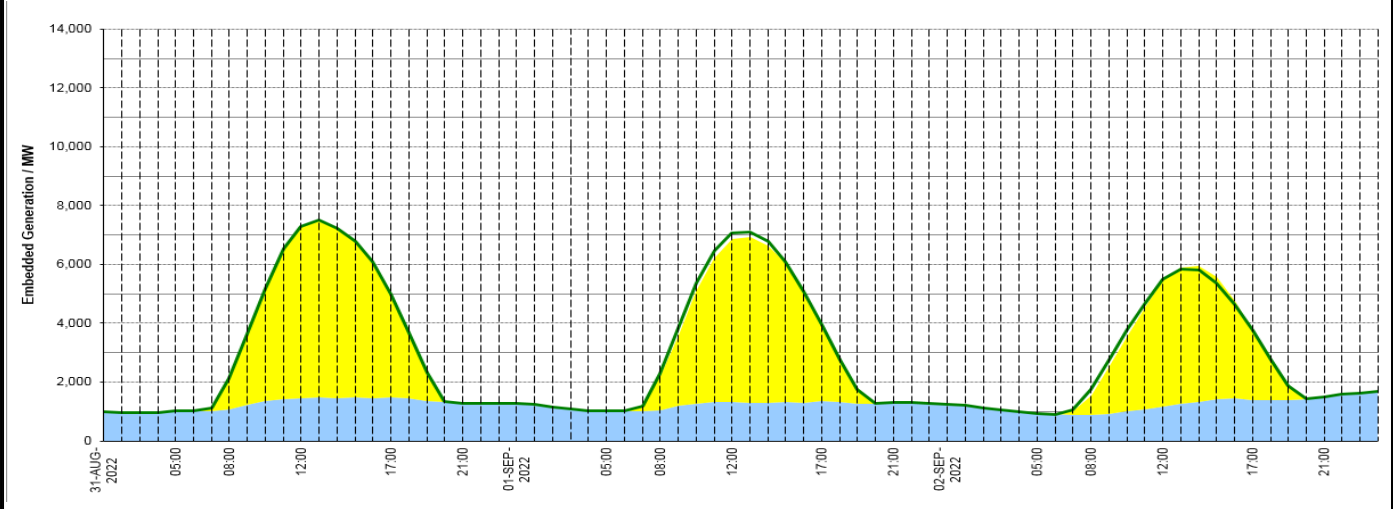
**Wind Power Forecast**



**Expected embedded generation (MWs)**

**Embedded Generation Forecast**

	31-AUG-2022					01-SEP-2022					02-SEP-2022						
	05:00	08:00	12:00	17:00	21:00	00:00	05:00	08:00	12:00	17:00	21:00	00:00	05:00	08:00	12:00	17:00	21:00
Solar (MW)	0	1056	5828	3511	0	0	0	1155	5550	2621	0	0	0	674	4315	2393	0
Wind (MW)	1020	1066	1459	1474	1289	1269	1022	1054	1327	1352	1301	1251	932	881	1175	1384	1500
STOR (MW)	0	0	0	0	0	0	0	0	0	0	0	0	0	0	0	0	0
<b>Total (MW)</b>	<b>1020</b>	<b>2122</b>	<b>7287</b>	<b>4985</b>	<b>1289</b>	<b>1269</b>	<b>1022</b>	<b>2295</b>	<b>7070</b>	<b>3945</b>	<b>1301</b>	<b>1251</b>	<b>932</b>	<b>1739</b>	<b>5488</b>	<b>3778</b>	<b>1500</b>



Weather	Source	Commentary
Latest forecast (Summary)	<a href="#">Met Office</a> <a href="#">SEPA</a> <a href="#">Natural Resources Wales</a>	<p><b>Today:</b> Largely dry and fine for many. Cloud increasing across the south of England and Wales with some well scattered showers developing by afternoon, these perhaps heavy and thundery in the far south. Warm but breezy in the south.</p> <p><b>Tonight:</b> Rather cloudy with a chance of some thundery showers in the south. A few showers also possible for eastern Scotland later otherwise dry and fine elsewhere. Chilly in the north.</p>
General Weather Concerns e.g. wind, rain, snow, flooding, GB Weather Warnings	<a href="#">Met Office</a> <a href="#">Weather Warnings</a> <a href="#">SEPA</a> <a href="#">Natural Resources Wales</a>	<p><b>UK Weather Warnings</b> No weather warnings are in force for the UK</p> <p><b>Flood Warnings</b> No flood alerts in England, Wales and Scotland</p>

Contains public sector information licensed under the Open Government Licence v1.0

Further Information	
BM Reports	<a href="https://www.bmreports.com">https://www.bmreports.com</a>
System Balancing Reports	<a href="https://www.nationalgrideso.com/balancing-data/system-balancing-reports">https://www.nationalgrideso.com/balancing-data/system-balancing-reports</a>
Forecast Volumes and Costs	<a href="https://www.nationalgrideso.com/balancing-data/forecast-volumes-and-costs">https://www.nationalgrideso.com/balancing-data/forecast-volumes-and-costs</a>
NGESO Insights	<a href="https://www.nationalgrideso.com/insights">https://www.nationalgrideso.com/insights</a>