

**National Electricity  
Transmission System Status Report**

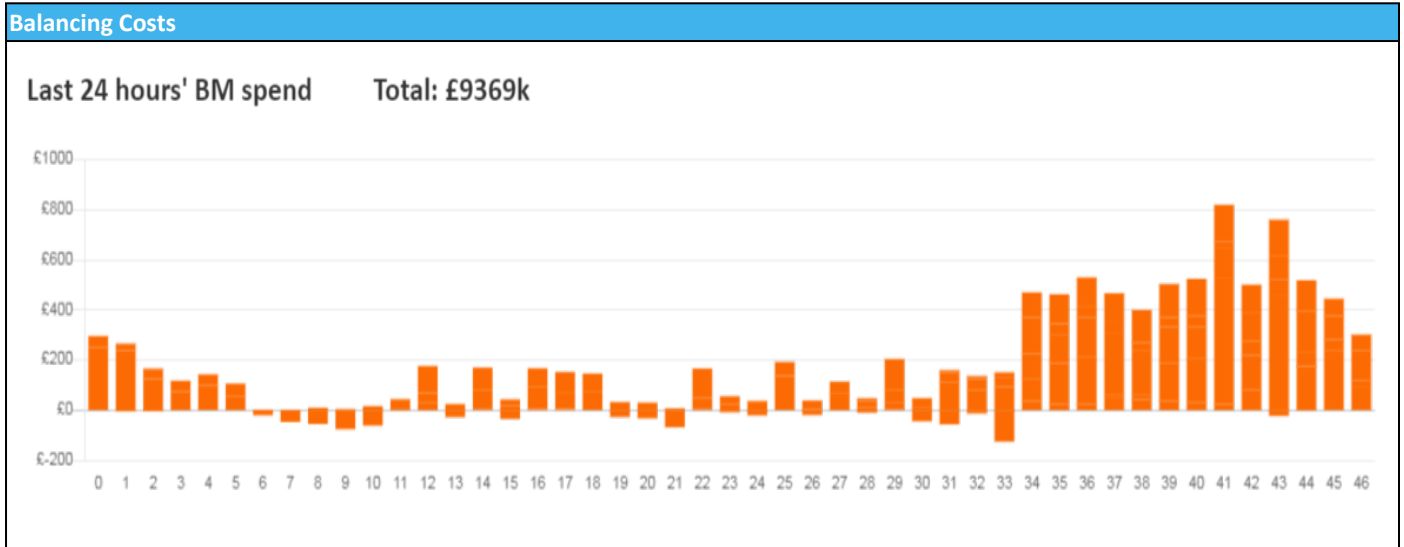


national**grid**ESO

National Electricity Transmission System Status Report  
Thursday 25 August 2022

Today's High Level Risk Status Forecast for the next 24h			
General Status		Voltage	
Demand		System Inertia	
System Margins		Weather	
Generation		Transmission	
Active Constraints			
<a href="#">System Warning</a>			

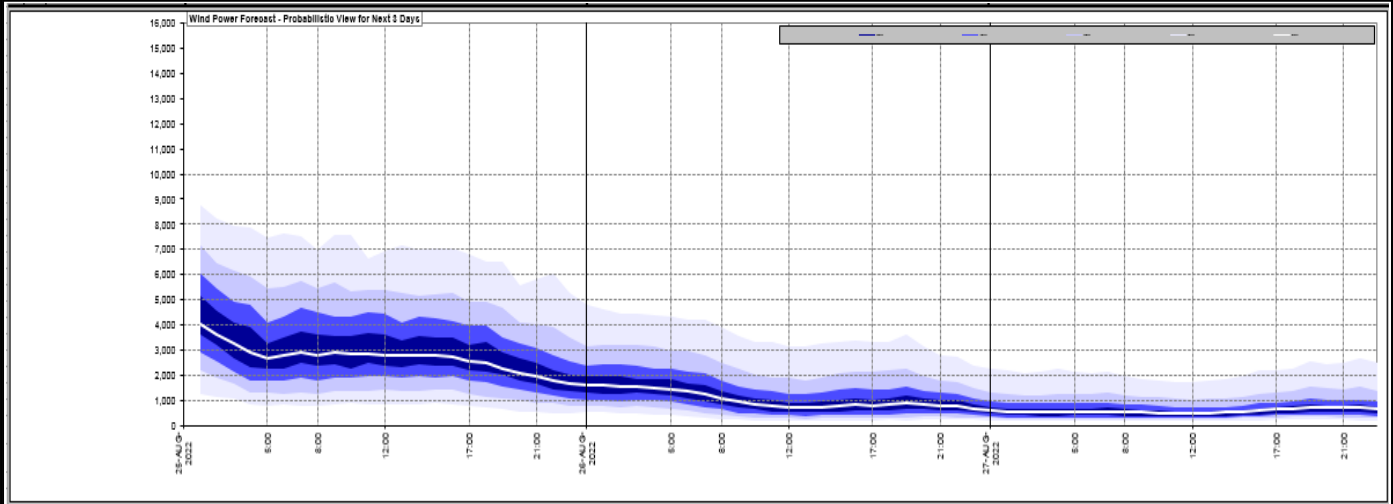
<a href="#">Today's Minimum De-Rated Margin</a>	2247.738 (SP 39)	
Current BMU Largest Loss Risk	Generation	1400 MW
	Demand	1050MW



Yesterday's Market Summary	
<a href="#">Cash Out Price (Max)</a>	£824.39 (SP 45)
<a href="#">Cash Out Price (Min)</a>	£276.25 (SP 17)
<a href="#">Peak Demand Yesterday</a>	32,004 MW
Minimum Demand	19,164 MW

Interconnector Net Transfer Capacity (MWs)			
Today	Import	Export	Remarks
Netherlands (BritNed)	1100	1133	Fully Available
France (IFA2)	1014	1014	Fully Available
Belgium (Nemo)	1020	1025	Fully Available
Ireland (EWIC)	500	530	Fully Available
France (ElecLink)	1014	1014	Fully Available
France (IFA)	1000	1000	Partially Available
Northern Ireland (MOYLE)	244	250	Partially Available
Norway (NSL)	1400	1400	Fully Available

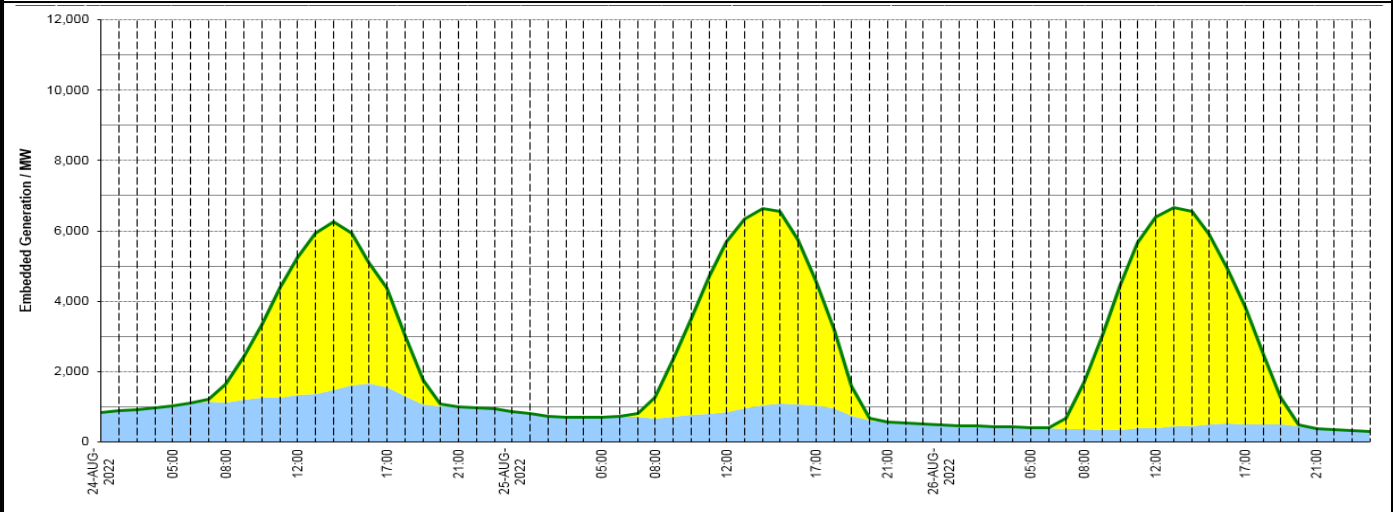
**Wind Power Forecast**



**Expected embedded generation (MWs)**

**Embedded Generation Forecast**

	24-AUG-2022					25-AUG-2022					26-AUG-2022						
	05:00	08:00	12:00	17:00	21:00	00:00	05:00	08:00	12:00	17:00	21:00	00:00	05:00	08:00	12:00	17:00	21:00
Solar (MW)	0	528	3891	2810	0	0	0	602	4829	3530	0	0	0	1348	6005	3317	0
Wind (MW)	1024	1126	1331	1551	997	859	707	665	859	1028	561	484	409	351	400	503	387
STOR (MW)	0	0	0	0	0	0	0	0	0	0	0	0	0	0	0	0	0
<b>Total (MW)</b>	<b>1024</b>	<b>1654</b>	<b>5222</b>	<b>4361</b>	<b>997</b>	<b>859</b>	<b>707</b>	<b>1267</b>	<b>5688</b>	<b>4558</b>	<b>561</b>	<b>484</b>	<b>409</b>	<b>1699</b>	<b>6405</b>	<b>3820</b>	<b>387</b>



Weather	Source	Commentary
Latest forecast (Summary)	<a href="#">Met Office</a> <a href="#">SEPA</a> <a href="#">Natural Resources Wales</a>	<b>Today:</b> Heavy, thundery rain affecting the SE and East Anglia easing through the day. Elsewhere, some showers across northwestern parts, otherwise mostly fine with sunny spells and feeling warm. Less hot in the SE, especially under cloud and rain. <b>Tonight:</b> Dry with clear spells for many central and eastern parts and cooler than of late. Cloud and showery rain in the northwest extending to other western parts by morning.
General Weather Concerns e.g. wind, rain, snow, flooding, GB Weather Warnings	<a href="#">Met Office</a> <a href="#">Weather Warnings</a> <a href="#">SEPA</a> <a href="#">Natural Resources Wales</a>	<b>UK Weather Warnings</b> Yellow warning of thunderstorms in East Midlands, East of England, London and South East England  <b>Flood Warnings</b> Flood alerts in force for England

Contains public sector information licensed under the Open Government Licence v1.0

Further Information	
BM Reports	<a href="https://www.bmreports.com">https://www.bmreports.com</a>
System Balancing Reports	<a href="https://www.nationalgrideso.com/balancing-data/system-balancing-reports">https://www.nationalgrideso.com/balancing-data/system-balancing-reports</a>
Forecast Volumes and Costs	<a href="https://www.nationalgrideso.com/balancing-data/forecast-volumes-and-costs">https://www.nationalgrideso.com/balancing-data/forecast-volumes-and-costs</a>
NGESO Insights	<a href="https://www.nationalgrideso.com/insights">https://www.nationalgrideso.com/insights</a>