

**National Electricity
Transmission System Status Report**

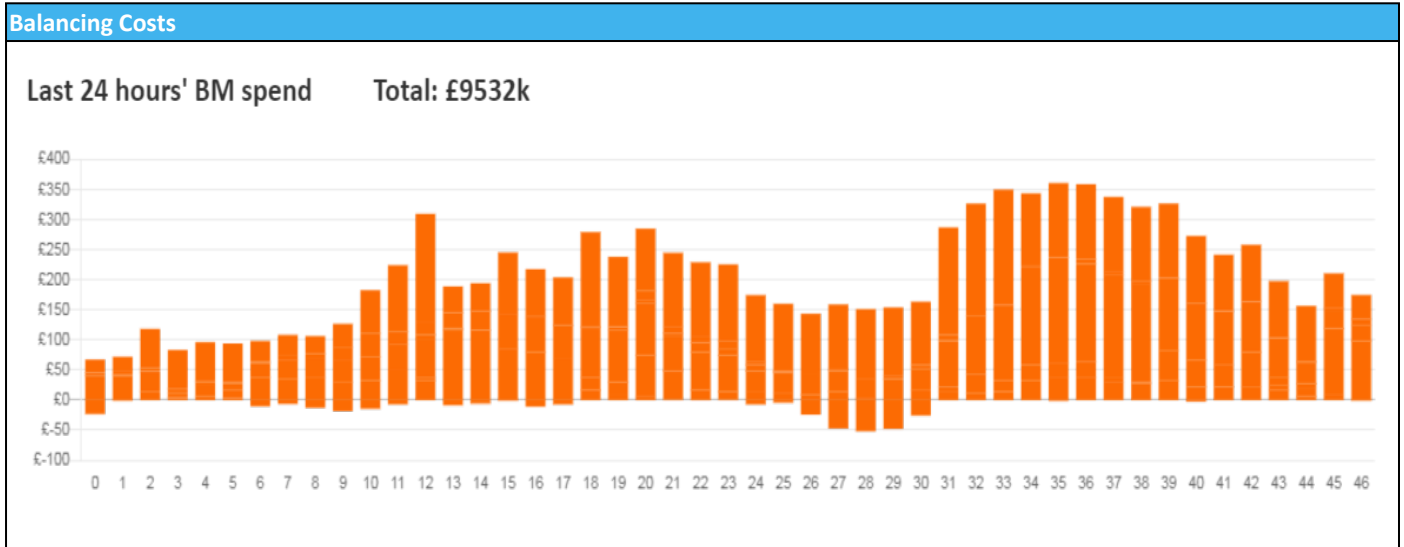


national**grid**ESO

National Electricity Transmission System Status Report
Wednesday 29 June 2022

Today's High Level Risk Status Forecast for the next 24h			
General Status		Voltage	
Demand		System Inertia	
System Margins		Weather	
Generation		Transmission	
Active Constraints			
System Warning			

Today's Minimum De-Rated Margin	4638 (SP 39)	
Current BMU Largest Loss Risk	Generation	1500 MW
	Demand	1050 MW



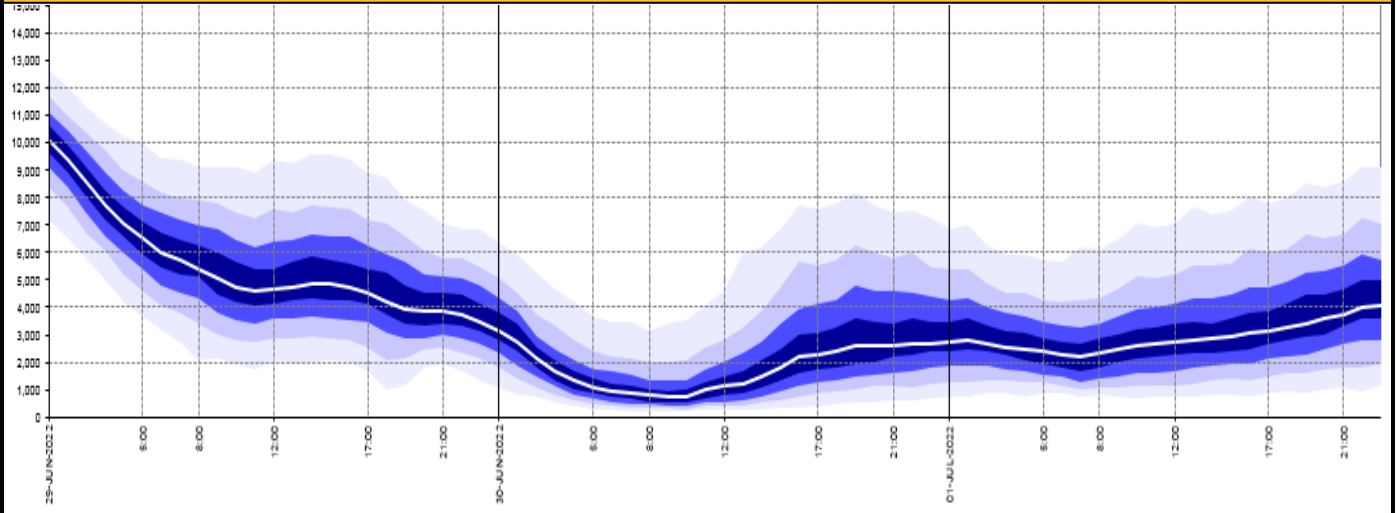
Yesterday's Market Summary

Cash Out Price (Max)	£195 (SP 20,21,22)
Cash Out Price (Min)	£56.00 (SP 56,57)
Peak Demand Yesterday	31,576MW
Minimum Demand	17,940 MW

Interconnector Net Transfer Capacity (MWs)

Today	Import	Export	Remarks
Netherlands (BritNed)	1100	1133	Fully Available
France (IFA2)	1014	1014	Fully Available
Belgium (Nemo)	1020	1025	Fully Available
Ireland (EWIC)	500	530	Fully Available
Northern Ireland (MOYLE)	244	250	Partially Available
Norway (NSL)	1400	900	Fully Available, ESO NTC restriction for Export
France (ElecLink)	1014	900	Fully Available, ESO NTC restriction for Export
France (IFA)	1000	1000	Partially Available

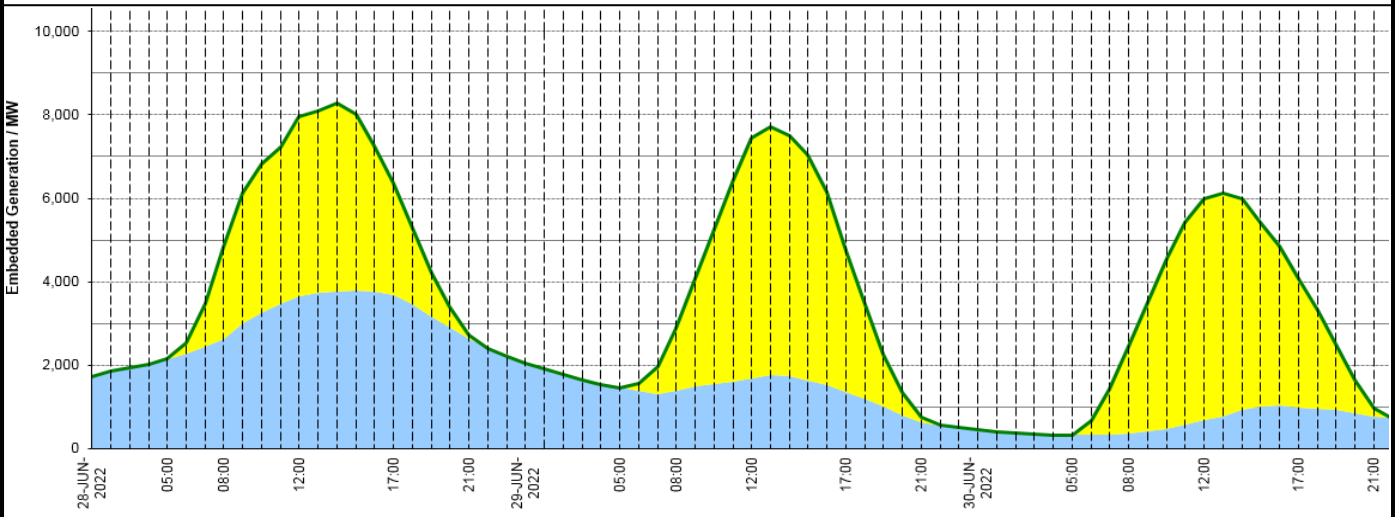
Wind Power Forecast



Expected embedded generation (MWs)

Embedded Generation Forecast

	28-JUN-2022					29-JUN-2022					30-JUN-2022						
	05:00	08:00	12:00	17:00	21:00	00:00	05:00	08:00	12:00	17:00	21:00	00:00	05:00	08:00	12:00	17:00	21:00
Solar (MW)	3	2190	4300	2700	102	0	0	1483	5736	3403	103	0	0	2099	5302	3092	186
Wind (MW)	2151	2628	3657	3675	2617	2056	1465	1393	1696	1350	637	458	328	365	694	990	779
STOR (MW)	0	0	0	0	0	0	0	0	0	0	0	0	0	0	0	0	0
Total (MW)	2154	4818	7957	6375	2719	2056	1465	2876	7432	4753	740	458	328	2464	5996	4082	965



Weather	Source	Commentary
Latest forecast (Summary)	Met Office SEPA Natural Resources Wales	Today: Cloud and rain in eastern parts clearing then all parts will see a mixture of sunny intervals and showers, some heavy. The SE remaining mostly dry. Feeling warmer. Tonight: Cloud and outbreaks of occasionally heavy rain in the west continuing to move east, reaching all but SE England. Showers will follow to western parts though Northern Ireland mostly dry. Winds slowly easing..
General Weather Concerns e.g. wind, rain, snow, flooding, GB Weather Warnings	Met Office Weather Warnings SEPA Natural Resources Wales	UK Weather Warnings None Flood Warnings No flood warnings are currently in force for England. No flood warnings and 1 flood alerts are currently in force for Scotland. No flood warnings are currently in force for Wales.

Contains public sector information licensed under the Open Government Licence v1.0

Further Information	
BM Reports	https://www.bmreports.com
System Balancing Reports	https://www.nationalgrideso.com/balancing-data/system-balancing-reports
Forecast Volumes and Costs	https://www.nationalgrideso.com/balancing-data/forecast-volumes-and-costs
NGESO Insights	https://www.nationalgrideso.com/insights