

National Electricity Transmission System Status Report

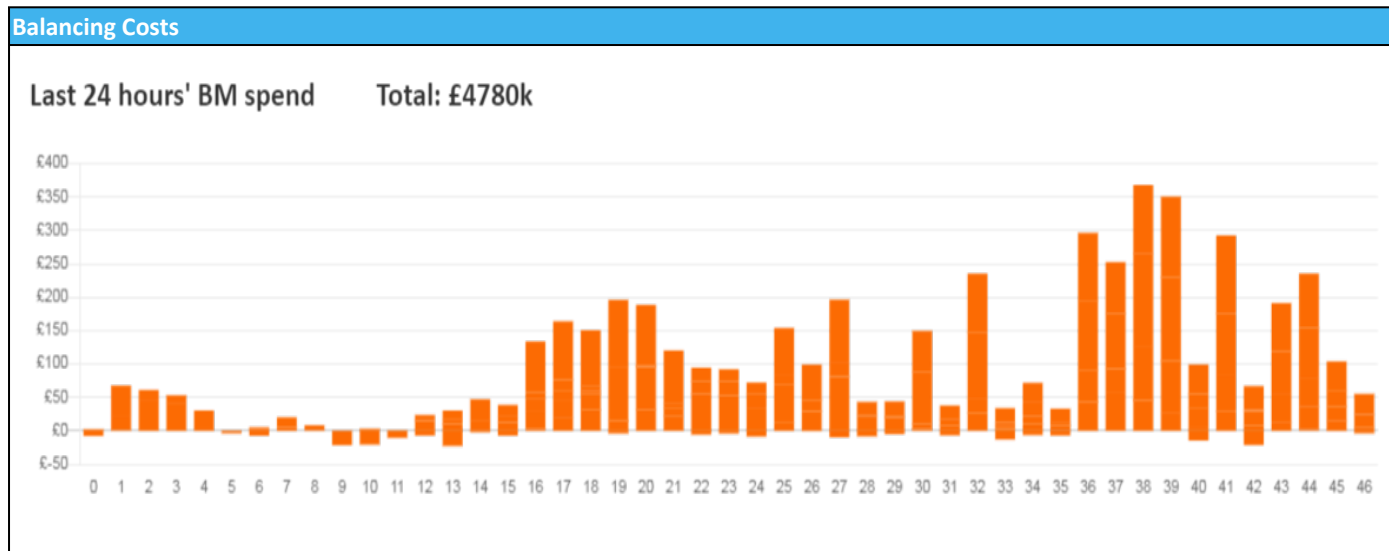


nationalgridESO

National Electricity Transmission System Status Report
Thursday 23 June 2022

| Today's High Level Risk Status Forecast for the next 24h | | | |
|--|--|----------------|--|
| General Status | | Voltage | |
| Demand | | System Inertia | |
| System Margins | | Weather | |
| Generation | | Transmission | |
| Active Constraints | | | |
| System Warning | | | |

| | | |
|---|--------------|---------|
| Today's Minimum De-Rated Margin | 5934 (SP 39) | |
| Current BMU Largest Loss Risk | Generation | 1600 MW |
| | Demand | 1050 MW |



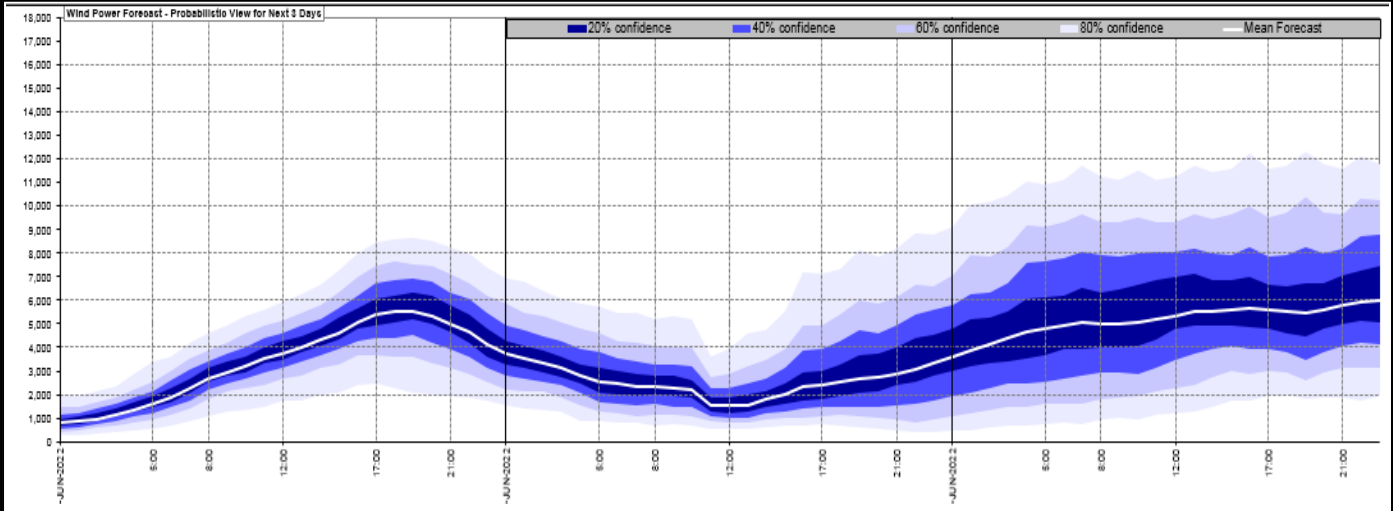
Yesterday's Market Summary

| | |
|---------------------------------------|-------------------------|
| Cash Out Price (Max) | £335.00 (SP 41) |
| Cash Out Price (Min) | £107.00 (SP 17 & 24-26) |
| Peak Demand Yesterday | 32,428MW |
| Minimum Demand | 19,360 MW |

Interconnector Net Transfer Capacity (MWs)

| Today | Import | Export | Remarks |
|--------------------------|--------|--------|---|
| Netherlands (BritNed) | 1100 | 1133 | Fully Available |
| France (IFA2) | 1014 | 1014 | Fully Available |
| Belgium (Nemo) | 1020 | 1025 | Fully Available |
| Ireland (EWIC) | 500 | 530 | Fully Available |
| Northern Ireland (MOYLE) | 244 | 250 | Partially Available |
| Norway (NSL) | 1400 | 900 | Fully Available, ESO NTC restriction for Export |
| France (ElecLink) | 1014 | 900 | Fully Available, ESO NTC restriction for Export |
| France (IFA) | 1000 | 1000 | Partially Available |

Wind Power Forecast



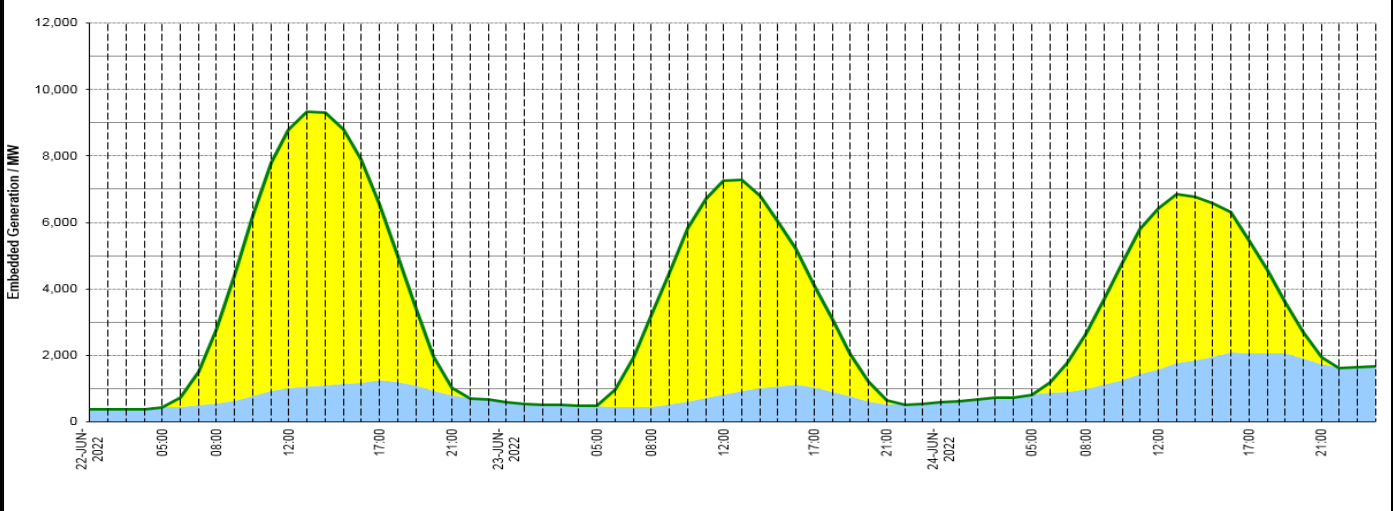
Expected embedded generation (MWs)

Embedded Generation Forecast

Embedded Generation Estimates

Last run: 23-Jun-2022 01:44:27

| | 22-JUN-2022 | | | | | 23-JUN-2022 | | | | | 24-JUN-2022 | | | | | | |
|-------------------|-------------|-------------|-------------|-------------|-------------|-------------|------------|-------------|-------------|-------------|-------------|------------|------------|-------------|-------------|-------------|-------------|
| | 05:00 | 08:00 | 12:00 | 17:00 | 21:00 | 00:00 | 05:00 | 08:00 | 12:00 | 17:00 | 21:00 | 00:00 | 05:00 | 08:00 | 12:00 | 17:00 | 21:00 |
| Solar (MW) | 2 | 2220 | 7790 | 5280 | 236 | 0 | 19 | 2721 | 6426 | 3076 | 103 | 0 | 0 | 1644 | 4839 | 3388 | 203 |
| Wind (MW) | 436 | 539 | 996 | 1263 | 782 | 587 | 461 | 455 | 818 | 1032 | 531 | 578 | 809 | 995 | 1571 | 2070 | 1748 |
| STOR (MW) | 0 | 0 | 0 | 0 | 0 | 0 | 0 | 0 | 0 | 0 | 0 | 0 | 0 | 0 | 0 | 0 | 0 |
| Total (MW) | 438 | 2759 | 8786 | 6543 | 1018 | 587 | 480 | 3176 | 7244 | 4108 | 634 | 578 | 809 | 2639 | 6410 | 5458 | 1951 |



| Weather | Source | Commentary |
|---|---|--|
| Latest forecast (Summary) | Met Office SEPA Natural Resources Wales | <p>Today: Today, showers will push up from the south into England and Wales, these locally heavy and thundery. Elsewhere, it will be dry with warm spells of sunshine, but cloudier in parts of the north-west.</p> <p>Tonight: Tonight, showers will continue across Wales and western parts of England, these reaching eastern Scotland later. Clear spells elsewhere, but the north-west will remain cloudy with spots of rain.</p> |
| General Weather Concerns e.g. wind, rain, snow, flooding, GB Weather Warnings | Met Office Weather Warnings SEPA Natural Resources Wales | <p>UK Weather Warnings Yellow warning of thunderstorms Areas affected: East Midlands East of England London & South East England North West England South West England Wales West Midlands</p> <p>Starts: 10:00 BST on Thu 23 June Ends: 23:59 BST on Thu 23 June Thunderstorms and torrential downpours may cause travel disruption and, in a few places, flooding.</p> <p>Flood Warnings No flood warnings are currently in force for England.</p> |

| Weather | Source | Commentary |
|---------|--------|---|
| | | No flood warnings are currently in force for Scotland. No flood warnings are currently in force for Wales. |

Contains public sector information licensed under the Open Government Licence v1.0

| Further Information | |
|----------------------------|---|
| BM Reports | https://www.bmreports.com |
| System Balancing Reports | https://www.nationalgrideso.com/balancing-data/system-balancing-reports |
| Forecast Volumes and Costs | https://www.nationalgrideso.com/balancing-data/forecast-volumes-and-costs |
| NGESO Insights | https://www.nationalgrideso.com/insights |