

# National Electricity Transmission System Status Report

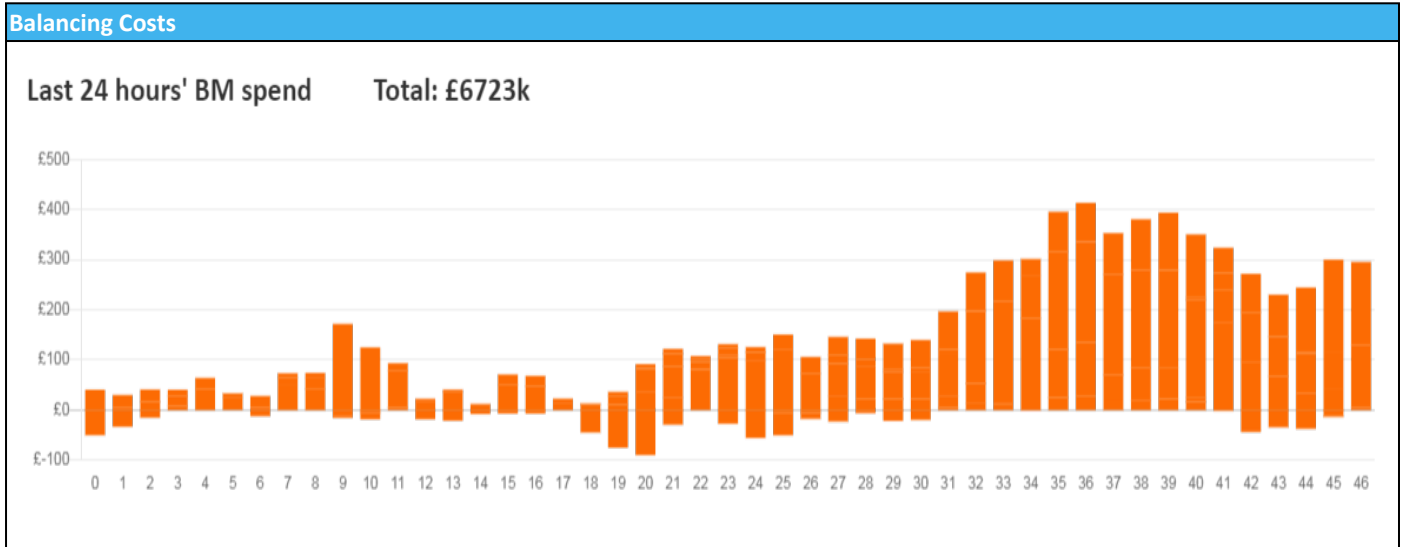


nationalgridESO

National Electricity Transmission System Status Report  
Tuesday 12 April 2022

| Today's High Level Risk Status Forecast for the next 24h |  |                |  |
|--|--|----------------|--|
| General Status   |  | Voltage        |  |
| Demand   |  | System Inertia |  |
| System Margins   |  | Weather        |  |
| Generation   |  | Transmission   |  |
| Active Constraints                                       |  |                |  |
| <a href="#">System Warning</a>                           |  |                |  |

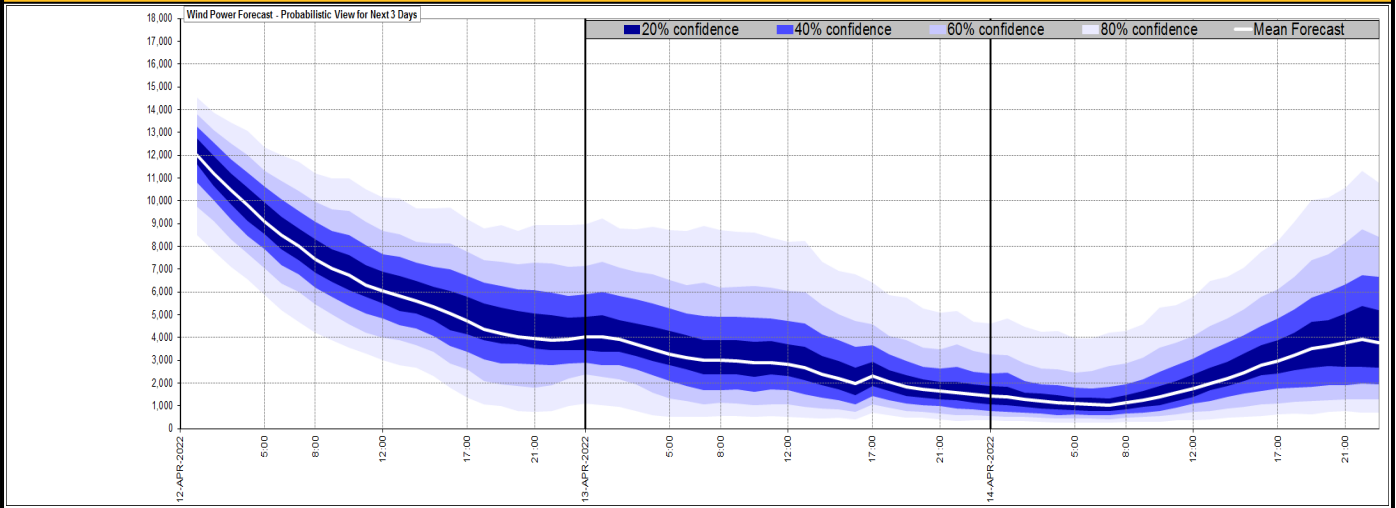
|   |              |         |
|---|--------------|---------|
| <a href="#">Today's Minimum De-Rated Margin</a> | 8128 (SP 38) |         |
| Current BMU Largest Loss Risk                   | Generation   | 1500 MW |
|   | Demand       | 560 MW  |



| Yesterday's Market Summary            |                    |
|---------------------------------------|--------------------|
| <a href="#">Cash Out Price (Max)</a>  | £304.90 (SP 17,18) |
| <a href="#">Cash Out Price (Min)</a>  | -£63.02 (SP 27,28) |
| <a href="#">Peak Demand Yesterday</a> | 33,571 MW          |
| Minimum Demand                        | 21,600 MW          |

| Interconnector<br>Net Transfer Capacity (MWs) |        |        |                      |
|---|--------|--------|----------------------|
| Today   | Import | Export | Remarks              |
| Netherlands (BritNed)                         | 1016   | 1016   | Fully Available      |
| France (IFA2)                                 | 1014   | 1014   | Fully Available      |
| Belgium (Nemo)                                | 1020   | 1020   | Fully Available      |
| Ireland (EWIC)                                | 0      | 0      | Planned Outage       |
| Northern Ireland (MOYLE)                      | 500    | 500    | Fully Available      |
| NSL   | 706    | 706    | Partially Available  |
| ElecLink                                      | 0      | 0      | Not yet commissioned |
| France IFA                                    | 1000   | 1000   | Partially available  |

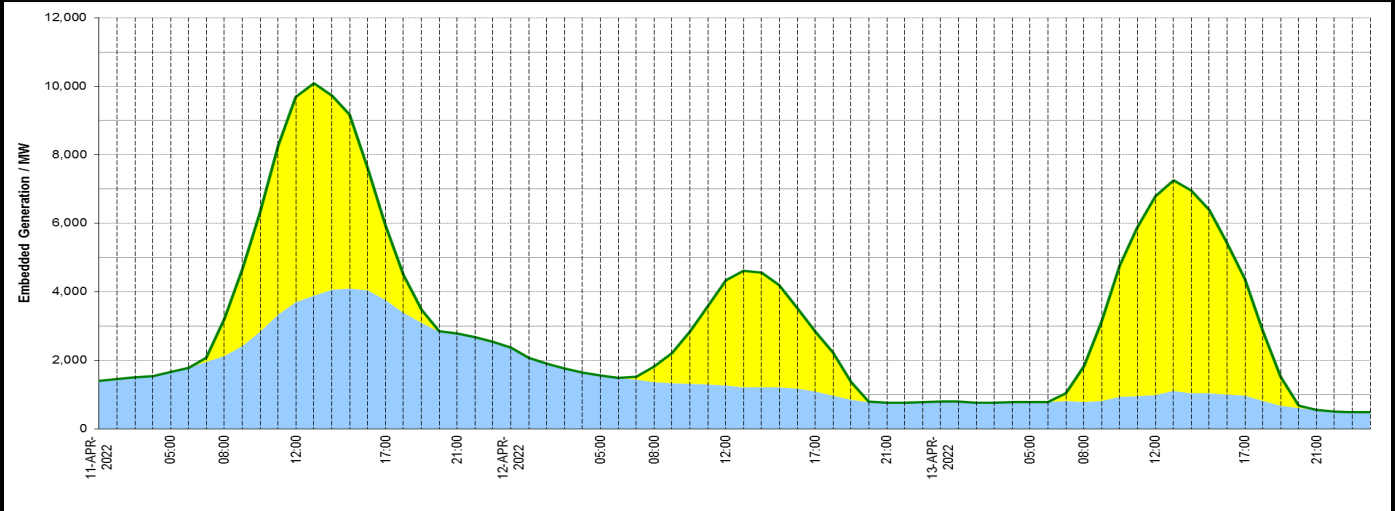
### Wind Power Forecast



### Expected embedded generation (MWs)

#### Embedded Generation Forecast

|                   | 11-APR-2022 |             |             |             |             | 12-APR-2022 |             |             |             |             | 13-APR-2022 |            |            |             |             |             |            |
|-------------------|-------------|-------------|-------------|-------------|-------------|-------------|-------------|-------------|-------------|-------------|-------------|------------|------------|-------------|-------------|-------------|------------|
|                   | 05:00       | 08:00       | 12:00       | 17:00       | 21:00       | 00:00       | 05:00       | 08:00       | 12:00       | 17:00       | 21:00       | 00:00      | 05:00      | 08:00       | 12:00       | 17:00       | 21:00      |
| Solar (MW)        | 0           | 1090        | 6000        | 2190        | 0           | 0           | 0           | 453         | 3081        | 1755        | 0           | 0          | 0          | 1057        | 5810        | 3401        | 0          |
| Wind (MW)         | 1661        | 2126        | 3692        | 3765        | 2783        | 2369        | 1563        | 1369        | 1255        | 1082        | 764         | 791        | 774        | 782         | 983         | 971         | 548        |
| STOR (MW)         | 0           | 0           | 0           | 0           | 0           | 0           | 0           | 0           | 0           | 0           | 0           | 0          | 0          | 0           | 0           | 0           | 0          |
| <b>Total (MW)</b> | <b>1661</b> | <b>3216</b> | <b>9692</b> | <b>5955</b> | <b>2783</b> | <b>2369</b> | <b>1563</b> | <b>1822</b> | <b>4336</b> | <b>2837</b> | <b>764</b>  | <b>791</b> | <b>774</b> | <b>1839</b> | <b>6793</b> | <b>4372</b> | <b>548</b> |



| Weather  | Source  | Commentary  |
|--|---|---|
| Latest forecast (Summary)  | <a href="#">Met Office</a><br><a href="#">SEPA</a><br><a href="#">Natural Resources Wales</a>                                     | <b>Today:</b><br>Cloud and showery rain, some heavy, moving north to all but northern Scotland by evening. Sunny spells and showers following, some heavy with thunder by afternoon. Warm in sunshine in the south but chilly, grey and damp for the northeast.<br><b>Tonight:</b><br>Cloudy with further rain in the north. Elsewhere rather cloudy with some clear spells in the east but also occasional showers or rain in the cloudier west. Mild. |
| General Weather Concerns<br>e.g. wind, rain, snow, flooding, GB Weather Warnings | <a href="#">Met Office</a><br><a href="#">Weather Warnings</a><br><a href="#">SEPA</a><br><a href="#">Natural Resources Wales</a> | <b>UK Weather Warnings</b><br>No weather warnings are in force for the UK.<br><b>Flood Warnings</b><br>0 Flood Warnings and 1 Flood Alerts issued for England.<br>0 Flood Warning and 0 Flood Alerts issued for Scotland.<br>0 Flood Warnings and 0 Flood Alerts issued for Wales.  |

Contains public sector information licensed under the Open Government Licence v1.0

| Further Information |   |
|---------------------|---|
| BM Reports          | <a href="https://www.bmreports.com">https://www.bmreports.com</a> |

| Further Information        |   |
|----------------------------|---|
| System Balancing Reports   | <a href="https://www.nationalgrideso.com/balancing-data/system-balancing-reports">https://www.nationalgrideso.com/balancing-data/system-balancing-reports</a>     |
| Forecast Volumes and Costs | <a href="https://www.nationalgrideso.com/balancing-data/forecast-volumes-and-costs">https://www.nationalgrideso.com/balancing-data/forecast-volumes-and-costs</a> |
| NGESO Insights             | <a href="https://www.nationalgrideso.com/insights">https://www.nationalgrideso.com/insights</a>   |