

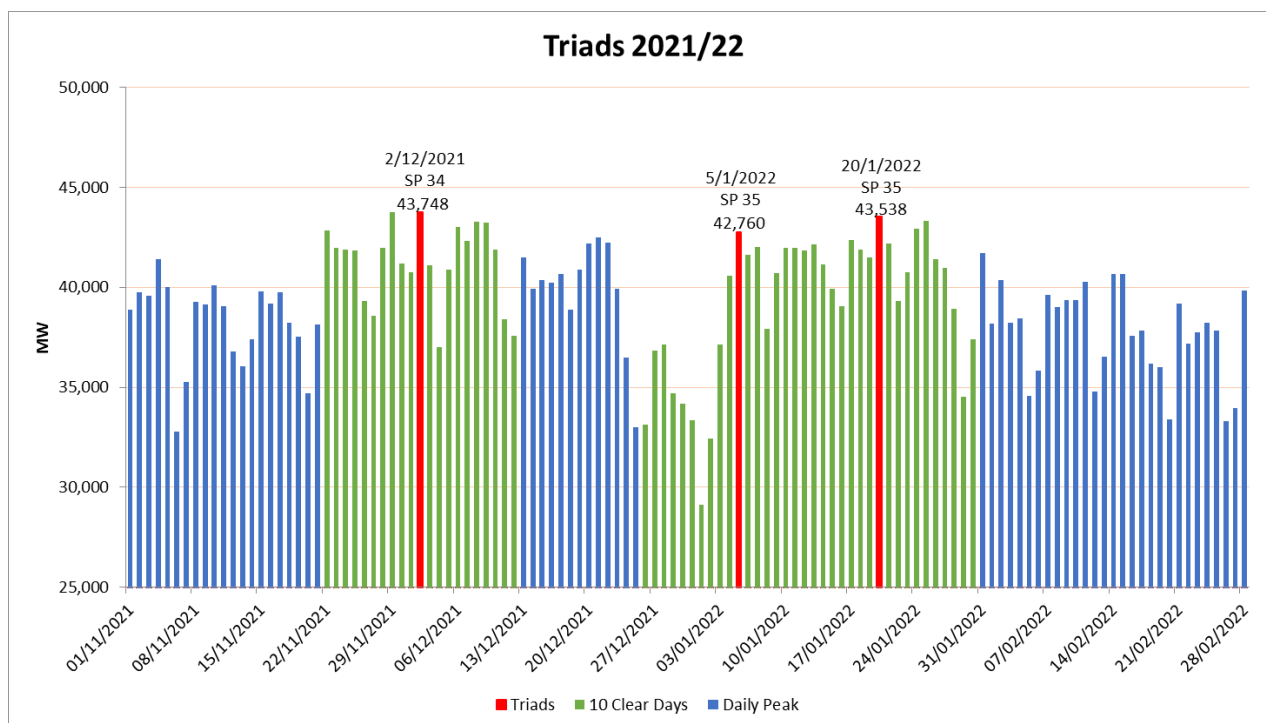
Triads 2021/22

In accordance with the Connection and Use of System Code (CUSC), the Triads for each charging year are calculated and published by National Grid Electricity System Operator using net system demand data (based on the latest available settlement metering) for each half hourly settlement period between November and February inclusive.

The Triads are the three half-hour settlement periods of highest net system demand on the GB electricity transmission system between November and February (inclusive) each year, separated by at least ten clear days. The Triads are used to determine TNUoS demand charges for customers with half hourly meters (see Section 14 of the CUSC).

The Triads for 2021/22 are:

Date	Settlement Period	Net System Demand (MW)
2 nd December 2021	34	43,748
20 th January 2022	35	43,538
5 th January 2022	35	42,760



Please see Appendix 1 for details of the half-hour settlement period of highest net system demand for each day between 1st November 2021 and 28th February 2022.

For more information about the Triads, please see our latest guide at this [link](#).

Alternatively, please contact the Revenue team at TNUoS.queries@nationalgrideso.com

Appendix 1: Daily half-hour settlement period of highest net system demand (Triads in blue)

Date	Half Hour Ending	Settlement Period	Demand (MW)	Settlement Run
Monday 1-Nov-21	17:30	35	38,863.192	R2
Tuesday 2-Nov-21	18:00	36	39,755.614	R2
Wednesday 3-Nov-21	17:30	35	39,589.522	R2
Thursday 4-Nov-21	17:30	35	41,394.994	R2
Friday 5-Nov-21	17:30	35	40,010.756	R2
Saturday 6-Nov-21	17:30	35	32,775.758	R2
Sunday 7-Nov-21	17:30	35	35,285.434	R2
Monday 8-Nov-21	17:30	35	39,253.830	R2
Tuesday 9-Nov-21	17:30	35	39,140.292	R2
Wednesday 10-Nov-21	18:00	36	40,090.756	R2
Thursday 11-Nov-21	17:30	35	39,058.678	R2
Friday 12-Nov-21	17:30	35	36,807.674	R2
Saturday 13-Nov-21	18:00	36	36,065.640	R2
Sunday 14-Nov-21	18:00	36	37,390.014	R2
Monday 15-Nov-21	17:30	35	39,798.032	R2
Tuesday 16-Nov-21	17:30	35	39,185.614	R2
Wednesday 17-Nov-21	17:30	35	39,758.332	R2
Thursday 18-Nov-21	17:30	35	38,231.612	R2
Friday 19-Nov-21	17:30	35	37,513.108	R2
Saturday 20-Nov-21	17:30	35	34,701.888	R2
Sunday 21-Nov-21	17:30	35	38,127.520	R2
Monday 22-Nov-21	17:30	35	42,824.742	R2
Tuesday 23-Nov-21	17:00	34	41,989.190	R2
Wednesday 24-Nov-21	17:30	35	41,899.062	R2
Thursday 25-Nov-21	18:00	36	41,828.098	R2
Friday 26-Nov-21	17:30	35	39,302.832	R2
Saturday 27-Nov-21	18:00	36	38,575.896	R2
Sunday 28-Nov-21	17:30	35	41,973.362	R2
Monday 29-Nov-21	17:30	35	43,742.022	R2
Tuesday 30-Nov-21	17:30	35	41,182.738	R2
Wednesday 1-Dec-21	17:30	35	40,754.778	R2
Thursday 2-Dec-21	17:00	34	43,748.304	R1
Friday 3-Dec-21	17:00	34	41,086.410	R1
Saturday 4-Dec-21	17:30	35	37,018.440	R1
Sunday 5-Dec-21	17:30	35	40,891.574	R1
Monday 6-Dec-21	17:30	35	43,037.956	R1
Tuesday 7-Dec-21	17:30	35	42,339.756	R1
Wednesday 8-Dec-21	17:30	35	43,259.038	R1
Thursday 9-Dec-21	17:30	35	43,245.662	R1
Friday 10-Dec-21	17:30	35	41,866.724	R1
Saturday 11-Dec-21	17:30	35	38,397.166	R1
Sunday 12-Dec-21	17:30	35	37,594.134	R1
Monday 13-Dec-21	17:30	35	41,501.094	R1
Tuesday 14-Dec-21	17:30	35	39,919.808	R1
Wednesday 15-Dec-21	17:00	34	40,378.184	R1
Thursday 16-Dec-21	17:00	34	40,232.326	R1
Friday 17-Dec-21	17:30	35	40,646.340	R1
Saturday 18-Dec-21	18:00	36	38,881.456	R1
Sunday 19-Dec-21	17:30	35	40,872.760	R1
Monday 20-Dec-21	17:30	35	42,176.208	R1
Tuesday 21-Dec-21	17:30	35	42,507.942	R1
Wednesday 22-Dec-21	17:30	35	42,247.790	R1
Thursday 23-Dec-21	17:30	35	39,911.310	R1
Friday 24-Dec-21	17:30	35	36,483.898	R1
Saturday 25-Dec-21	13:30	27	33,012.070	R1
Sunday 26-Dec-21	17:30	35	33,135.452	R1
Monday 27-Dec-21	17:30	35	36,852.490	R1
Tuesday 28-Dec-21	18:00	36	37,157.280	R1
Wednesday 29-Dec-21	18:00	36	34,714.488	R1
Thursday 30-Dec-21	17:30	35	34,164.432	R1

Date	Half Hour Ending	Settlement Period	Demand (MW)	Settlement Run
Friday 31-Dec-21	18:00	36	33,352.210	R1
Saturday 1-Jan-22	17:30	35	29,136.012	R1
Sunday 2-Jan-22	17:30	35	32,442.912	R1
Monday 3-Jan-22	17:30	35	37,147.786	R1
Tuesday 4-Jan-22	18:00	36	40,593.060	R1
Wednesday 5-Jan-22	17:30	35	42,760.192	R1
Thursday 6-Jan-22	17:00	34	41,618.372	R1
Friday 7-Jan-22	17:30	35	42,017.960	R1
Saturday 8-Jan-22	18:00	36	37,903.354	R1
Sunday 9-Jan-22	17:30	35	40,728.830	R1
Monday 10-Jan-22	17:30	35	41,959.726	R1
Tuesday 11-Jan-22	17:30	35	41,956.258	R1
Wednesday 12-Jan-22	17:30	35	41,833.226	R1
Thursday 13-Jan-22	17:30	35	42,127.676	R1
Friday 14-Jan-22	17:30	35	41,124.536	R1
Saturday 15-Jan-22	18:00	36	39,908.428	R1
Sunday 16-Jan-22	17:30	35	39,049.786	R1
Monday 17-Jan-22	17:30	35	42,366.160	R1
Tuesday 18-Jan-22	17:30	35	41,868.556	R1
Wednesday 19-Jan-22	18:00	36	41,473.016	R1
Thursday 20-Jan-22	17:30	35	43,537.626	R1
Friday 21-Jan-22	17:30	35	42,188.330	R1
Saturday 22-Jan-22	17:30	35	39,301.550	R1
Sunday 23-Jan-22	17:30	35	40,739.440	R1
Monday 24-Jan-22	18:00	36	42,915.924	R1
Tuesday 25-Jan-22	17:30	35	43,342.004	R1
Wednesday 26-Jan-22	17:30	35	41,404.776	R1
Thursday 27-Jan-22	18:00	36	40,955.316	R1
Friday 28-Jan-22	17:30	35	38,910.846	R1
Saturday 29-Jan-22	18:00	36	34,516.614	R1
Sunday 30-Jan-22	18:00	36	37,400.828	R1
Monday 31-Jan-22	18:00	36	41,691.056	R1
Tuesday 1-Feb-22	18:00	36	38,171.902	R1
Wednesday 2-Feb-22	18:00	36	40,381.512	R1
Thursday 3-Feb-22	18:00	36	38,247.846	R1
Friday 4-Feb-22	18:00	36	38,457.732	R1
Saturday 5-Feb-22	18:00	36	34,556.640	R1
Sunday 6-Feb-22	18:00	36	35,824.254	R1
Monday 7-Feb-22	18:00	36	39,616.446	SF
Tuesday 8-Feb-22	18:00	36	39,022.814	SF
Wednesday 9-Feb-22	18:00	36	39,355.098	SF
Thursday 10-Feb-22	18:30	37	39,356.674	SF
Friday 11-Feb-22	18:00	36	40,253.014	SF
Saturday 12-Feb-22	18:00	36	34,782.530	SF
Sunday 13-Feb-22	18:00	36	36,531.370	SF
Monday 14-Feb-22	18:00	36	40,659.544	SF
Tuesday 15-Feb-22	18:00	36	40,685.698	SF
Wednesday 16-Feb-22	18:00	36	37,554.068	SF
Thursday 17-Feb-22	19:00	38	37,829.198	SF
Friday 18-Feb-22	18:00	36	36,179.448	SF
Saturday 19-Feb-22	18:30	37	35,989.980	SF
Sunday 20-Feb-22	18:00	36	33,375.332	SF
Monday 21-Feb-22	18:30	37	39,196.934	SF
Tuesday 22-Feb-22	18:30	37	37,187.082	SF
Wednesday 23-Feb-22	18:30	37	37,747.382	SF
Thursday 24-Feb-22	18:30	37	38,231.530	SF
Friday 25-Feb-22	18:30	37	37,828.370	SF
Saturday 26-Feb-22	18:30	37	33,290.166	SF
Sunday 27-Feb-22	18:30	37	33,956.418	SF
Monday 28-Feb-22	18:30	37	39,821.934	SF

The settlement data run types are Initial Interim (II), Settlement Final (SF), 1st Reconciliation (R1) and 2nd Reconciliation (R2). Subsequent settlement data may change demand, but the triads are not re-calculated after publication. For further settlement data information please consult the Elexon website at <https://www.elexon.co.uk/>.