

**National Electricity  
Transmission System Status Report**

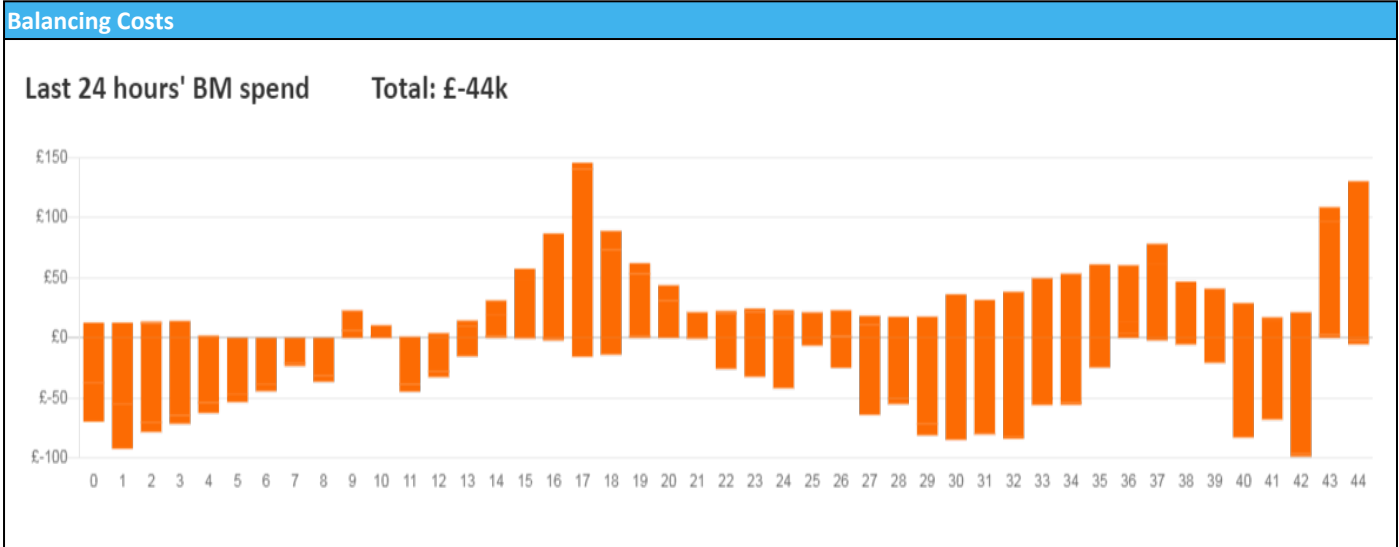


national**grid**ESO

National Electricity Transmission System Status Report  
Monday 28 March 2022

Today's High Level Risk Status Forecast for the next 24h			
General Status		Voltage	
Demand		System Inertia	
System Margins		Weather	
Generation		Transmission	
Active Constraints			
<a href="#">System Warning</a>			

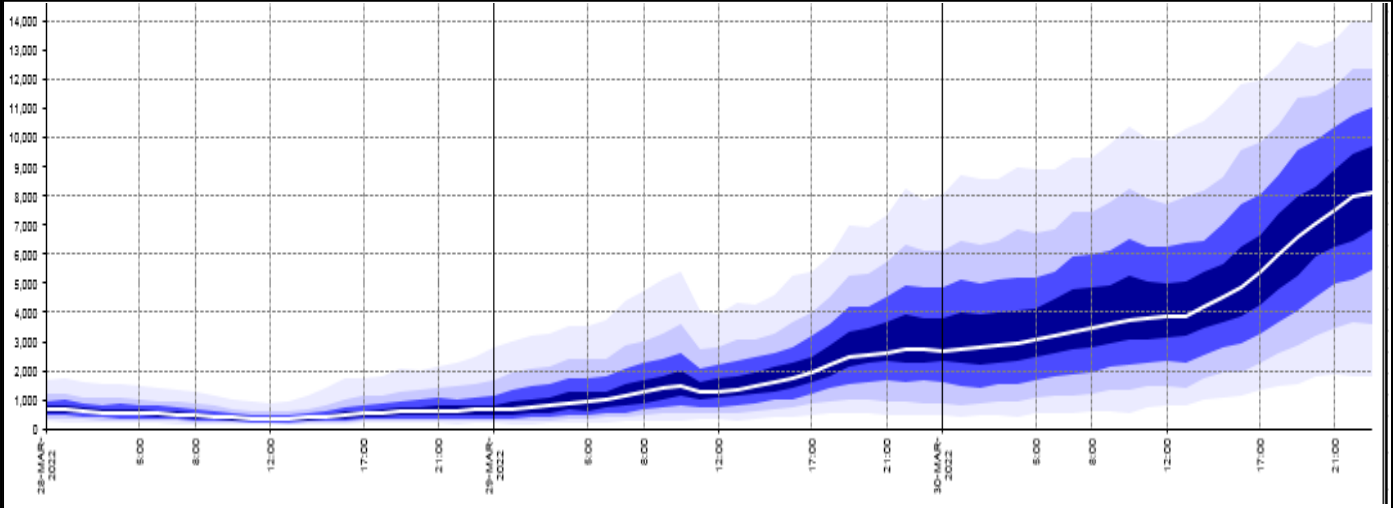
<a href="#">Today's Minimum De-Rated Margin</a>	4424 (SP 40)	
Current BMU Largest Loss Risk	Generation	1300 MW
	Demand	560 MW



Yesterday's Market Summary	
<a href="#">Cash Out Price (Max)</a>	£325 (SP 19)
<a href="#">Cash Out Price (Min)</a>	£0 (SP 1)
<a href="#">Peak Demand Yesterday</a>	32,585 MW
Minimum Demand	22,400MW

Interconnector Net Transfer Capacity (MWs)			
Today	Import	Export	Remarks
Netherlands (BritNed)	1016	1016	Fully Available
France (IFA2)	1014	1014	Fully Available
Belgium (Nemo)	1020	1020	Fully Available
Ireland (EWIC)	0	0	Planned Outage
Northern Ireland (MOYLE)	500	500	Fully Available
NSL	706	706	Partially Available
ElecLink	0	0	Not yet commissioned
France IFA	1000	1000	Partially available

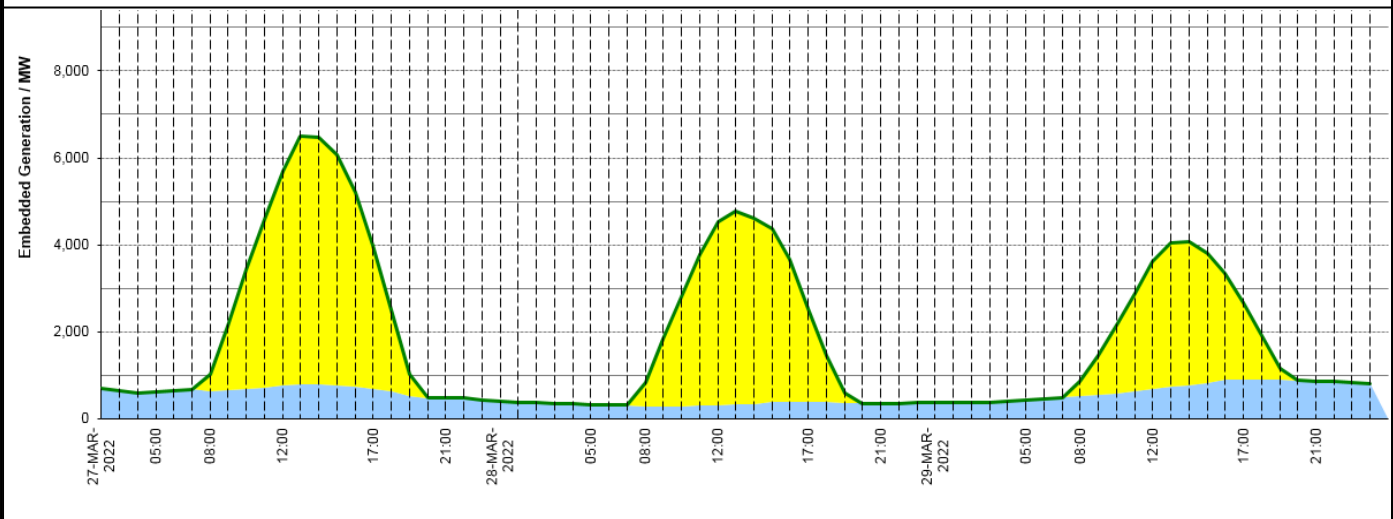
**Wind Power Forecast**



**Expected embedded generation (MWs)**

**Embedded Generation Forecast**

	27-MAR-2022					28-MAR-2022					29-MAR-2022						
	05:00	08:00	12:00	17:00	21:00	00:00	05:00	08:00	12:00	17:00	21:00	00:00	05:00	08:00	12:00	17:00	21:00
Solar (MW)	0	375	4930	3300	0	0	0	529	4213	2155	0	0	0	334	2940	1770	0
Wind (MW)	631	641	758	697	482	398	331	291	304	381	361	367	423	529	677	888	870
STOR (MW)	0	0	0	0	0	0	0	0	0	0	0	0	0	0	0	0	0
<b>Total (MW)</b>	<b>631</b>	<b>1016</b>	<b>5688</b>	<b>3997</b>	<b>482</b>	<b>398</b>	<b>331</b>	<b>820</b>	<b>4517</b>	<b>2536</b>	<b>361</b>	<b>367</b>	<b>423</b>	<b>863</b>	<b>3617</b>	<b>2658</b>	<b>870</b>



Weather	Source	Commentary
Latest forecast (Summary)	<a href="#">Met Office</a> <a href="#">SEPA</a> <a href="#">Natural Resources Wales</a>	<b>Today:</b> Low cloud and fog clearing to allow warm sunny spells inland for many. A few showers breaking out, mainly across parts of northern England, southern Scotland and north Wales. <b>Tonight:</b> Low cloud and fog becoming more extensive across parts of England and Wales. Clearer skies elsewhere allowing a patchy frost and isolated fog patches to form.
General Weather Concerns e.g. wind, rain, snow, flooding, GB Weather Warnings	<a href="#">Met Office</a> <a href="#">Weather Warnings</a> <a href="#">SEPA</a> <a href="#">Natural Resources Wales</a>	<b>UK Weather Warnings</b> No weather warnings are in force for the UK <b>Flood Warnings</b> 0 Flood Warnings and 0 Flood Alerts issued for England. 0 Flood Warning and 0 Flood Alerts issued for Scotland. 0 Flood Warnings and 0 Flood Alerts issued for Wales.

Contains public sector information licensed under the Open Government Licence v1.0

Further Information	
BM Reports	<a href="https://www.bmreports.com">https://www.bmreports.com</a>
System Balancing Reports	<a href="https://www.nationalgrideso.com/balancing-data/system-balancing-reports">https://www.nationalgrideso.com/balancing-data/system-balancing-reports</a>
Forecast Volumes and Costs	<a href="https://www.nationalgrideso.com/balancing-data/forecast-volumes-and-costs">https://www.nationalgrideso.com/balancing-data/forecast-volumes-and-costs</a>
NGESO Insights	<a href="https://www.nationalgrideso.com/insights">https://www.nationalgrideso.com/insights</a>