

**National Electricity  
Transmission System Status Report**

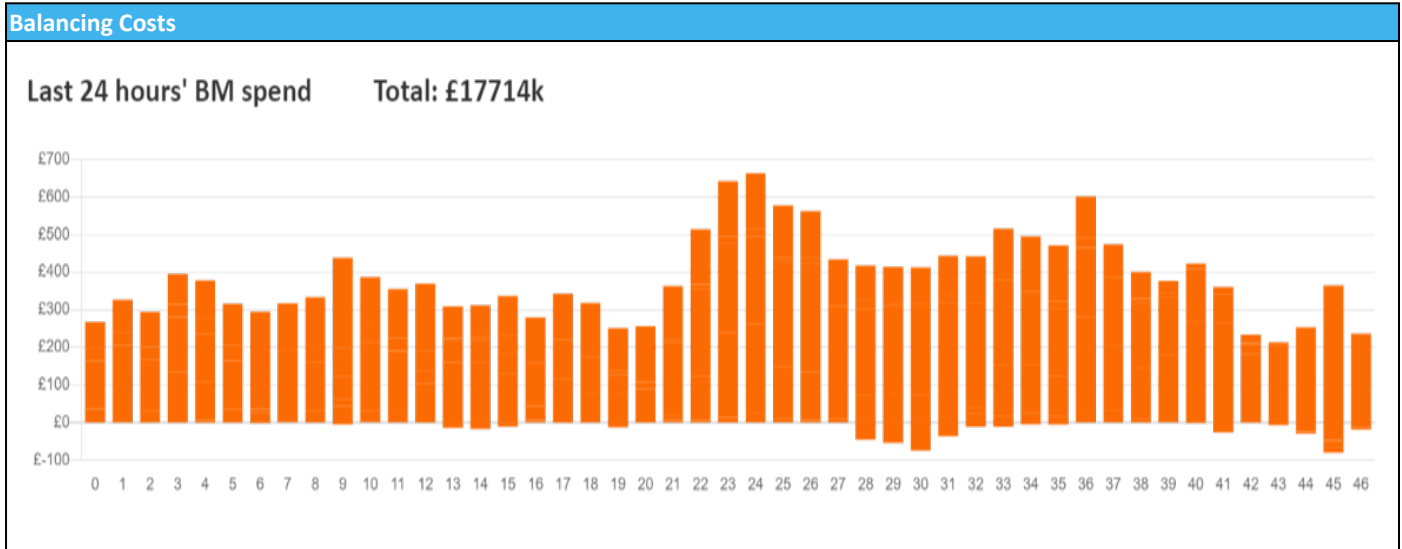


national**grid**ESO

National Electricity Transmission System Status Report  
Monday 14 March 2022

Today's High Level Risk Status Forecast for the next 24h			
General Status		Voltage	
Demand		System Inertia	
System Margins		Weather	
Generation		Transmission	
Active Constraints			
<a href="#">System Warning</a>			

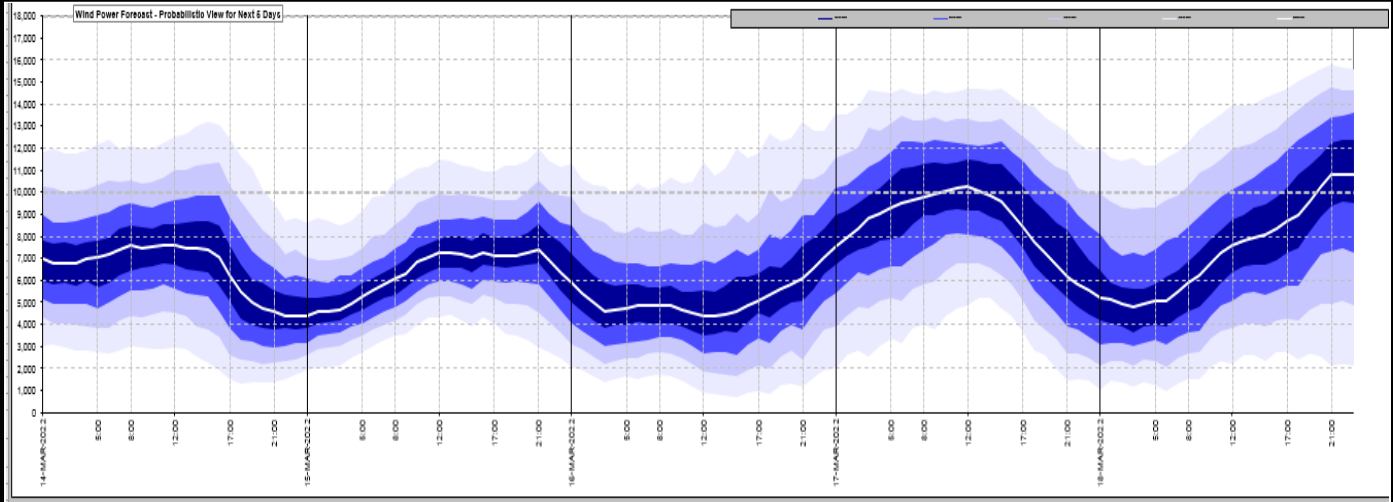
<a href="#">Today's Minimum De-Rated Margin</a>	3748.895 (SP 38)	
Current BMU Largest Loss Risk	Generation	1700 MW
	Demand	560 MW



Yesterday's Market Summary	
<a href="#">Cash Out Price (Max)</a>	£439.950 (SP 2)
<a href="#">Cash Out Price (Min)</a>	-£20.00 (SP 22)
<a href="#">Peak Demand Yesterday</a>	36,230 MW
Minimum Demand	18,363 MW

Interconnector Net Transfer Capacity (MWs)			
Today	Import	Export	Remarks
Netherlands (BritNed)	1016	1016	Fully Available
France (IFA2)	1014	1014	Fully Available
Belgium (Nemo)	1020	1020	Fully Available
Ireland (EWIC)	500	530	Fully Available
Northern Ireland (MOYLE)	500	500	Fully Available
NSL	1064	1064	Partially Available
ElecLink	0	0	Not yet commissioned
France IFA	0	0	Planned Outage on pole 4. Remainder on fault

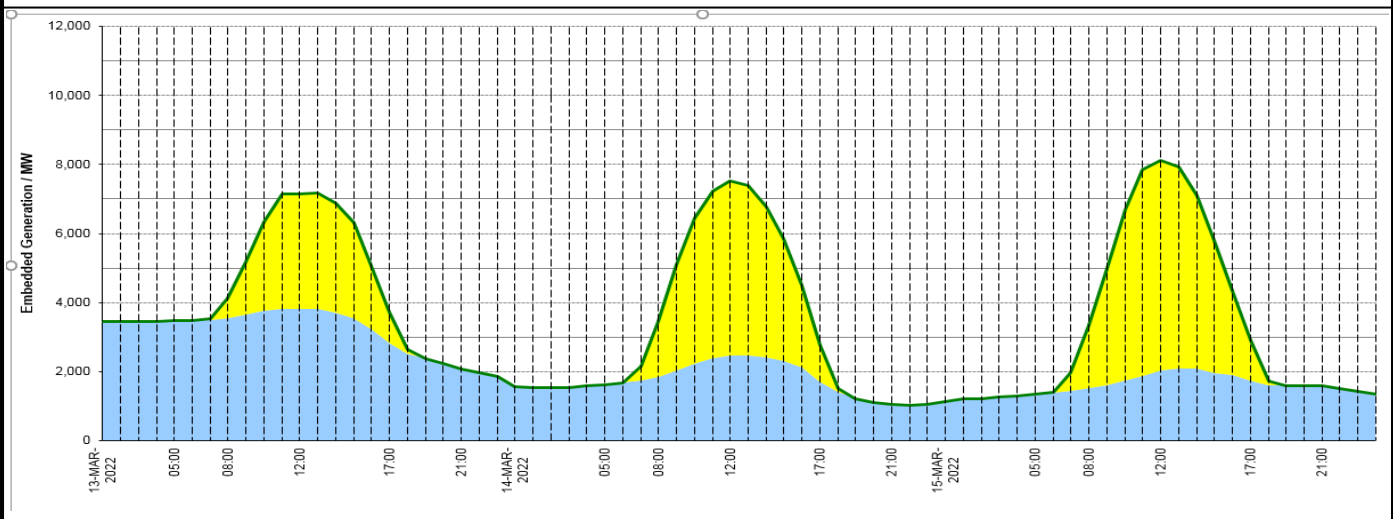
**Wind Power Forecast**



**Expected embedded generation (MWs)**

**Embedded Generation Forecast**

	13-MAR-2022					14-MAR-2022					15-MAR-2022						
	05:00	08:00	12:00	17:00	21:00	00:00	05:00	08:00	12:00	17:00	21:00	00:00	05:00	08:00	12:00	17:00	21:00
Solar (MW)	0	581	3330	894	0	0	0	1589	5068	1070	0	0	0	1830	6099	1184	0
Wind (MW)	3477	3543	3825	2814	2068	1555	1614	1853	2466	1718	1049	1124	1342	1517	2023	1732	1587
STOR (MW)	0	0	0	0	0	0	0	0	0	0	0	0	0	0	0	0	0
<b>Total (MW)</b>	<b>3477</b>	<b>4124</b>	<b>7155</b>	<b>3708</b>	<b>2068</b>	<b>1555</b>	<b>1614</b>	<b>3442</b>	<b>7534</b>	<b>2788</b>	<b>1049</b>	<b>1124</b>	<b>1342</b>	<b>3347</b>	<b>8122</b>	<b>2916</b>	<b>1587</b>



Weather	Source	Commentary
Latest forecast (Summary)	<a href="#">Met Office</a> <a href="#">SEPA</a> <a href="#">Natural Resources Wales</a>	<b>Today:</b> Rain in the northwest moving east across some other northern areas, turning more showery. Sunny spells further south, with scattered showers developing, possibly heavy. Mild in the south and east. <b>Tonight:</b> Rain in east clearing. Showers near southern coasts, else clear spells inland allowing frost and patchy fog to form. Cloudier further north with outbreaks of rain in the northwest.
General Weather Concerns e.g. wind, rain, snow, flooding, GB Weather Warnings	<a href="#">Met Office</a> <a href="#">Weather Warnings</a> <a href="#">SEPA</a> <a href="#">Natural Resources Wales</a>	<b>UK Weather Warnings</b> No weather warnings are in force for the UK  <b>Flood Warnings</b> 0 Flood Warnings and 2 Flood Alerts issued for England. 2 Flood Warning and 0 Flood Alerts issued for Scotland. 0 Flood Warnings and 0 Flood Alerts issued for Wales.

Contains public sector information licensed under the Open Government Licence v1.0

Further Information	
BM Reports	<a href="https://www.bmreports.com">https://www.bmreports.com</a>
System Balancing Reports	<a href="https://www.nationalgrideso.com/balancing-data/system-balancing-reports">https://www.nationalgrideso.com/balancing-data/system-balancing-reports</a>
Forecast Volumes and Costs	<a href="https://www.nationalgrideso.com/balancing-data/forecast-volumes-and-costs">https://www.nationalgrideso.com/balancing-data/forecast-volumes-and-costs</a>
NGESO Insights	<a href="https://www.nationalgrideso.com/insights">https://www.nationalgrideso.com/insights</a>