

**National Electricity  
Transmission System Status Report**

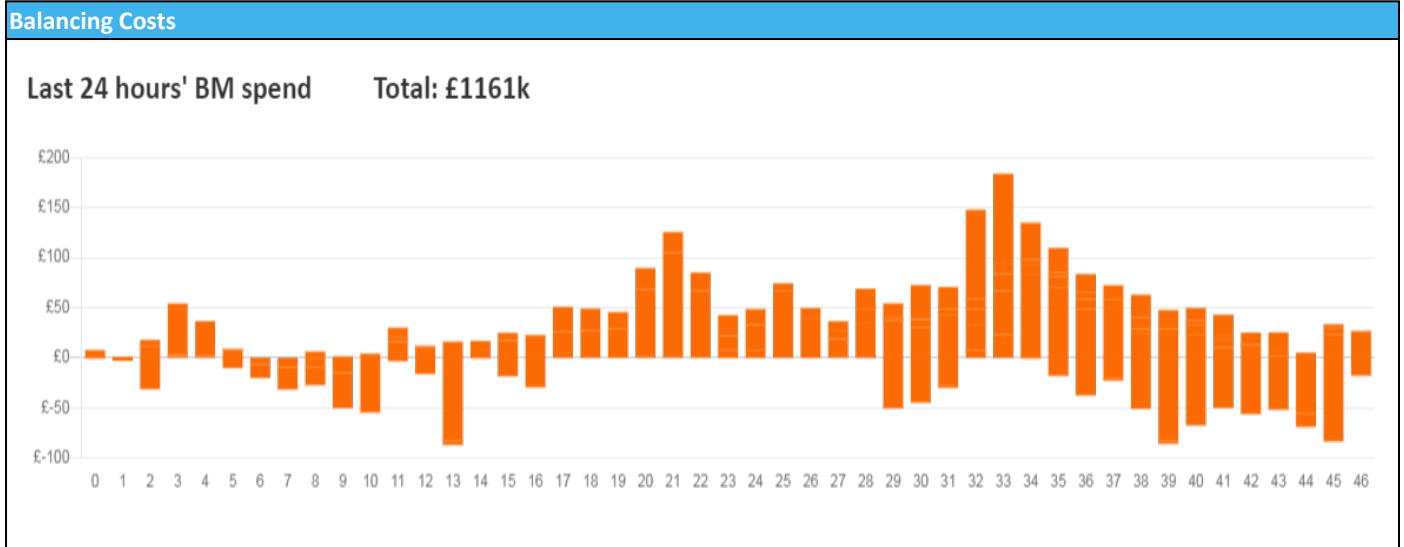


national**grid**ESO

National Electricity Transmission System Status Report  
Saturday 22 January 2022

Today's High Level Risk Status Forecast for the next 24h			
General Status		Voltage	
Demand		System Inertia	
System Margins		Weather	
Generation		Transmission	
Active Constraints			
<a href="#">System Warning</a>			

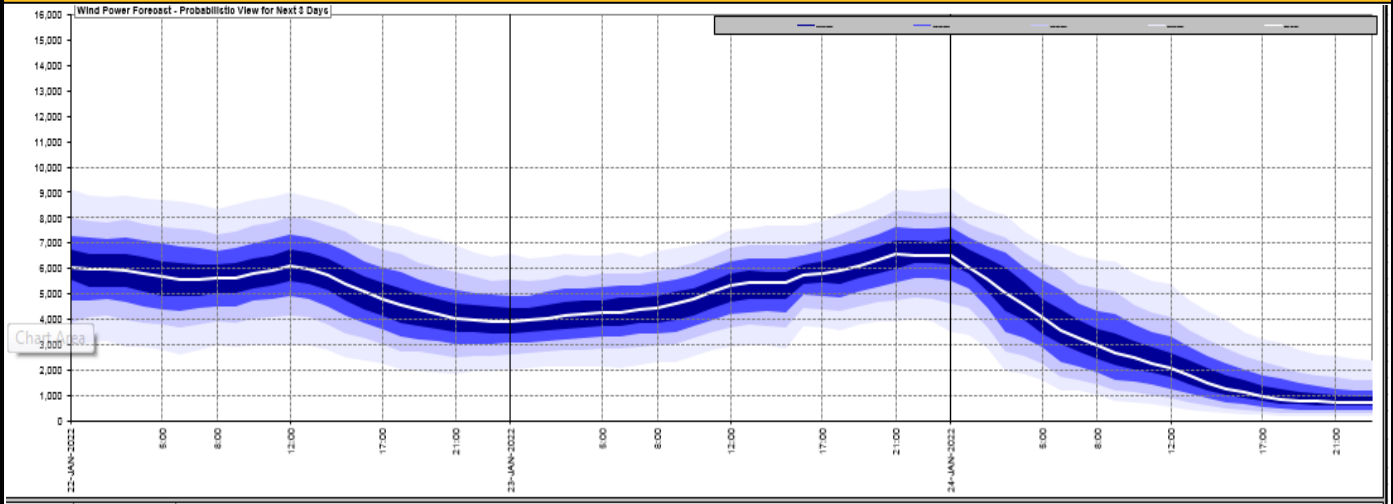
<a href="#">Today's Minimum De-Rated Margin</a>	5008 (SP 35)	
Current BMU Largest Loss Risk	Generation	1260 MW
	Demand	560 MW



Yesterday's Market Summary	
<a href="#">Cash Out Price (Max)</a>	£264.00 (SPs 22-23)
<a href="#">Cash Out Price (Min)</a>	£0.00 (SP 2)
<a href="#">Peak Demand Yesterday</a>	44,801 MW
Minimum Demand	24,300 MW

Interconnector Net Transfer Capacity (MWs)			
Today	Import	Export	Remarks
Netherlands (BritNed)	1100	1133	Fully Available
France (IFA2)	1014	1014	Fully Available
Belgium (Nemo)	1020	1020	Fully Available
Ireland (EWIC)	500	530	Fully Available
Northern Ireland (MOYLE)	500	500	Fully Available
NSL	703	703	Partially Available
ElecLink	0	0	Not yet commissioned
France IFA	1000	1000	Partially Available

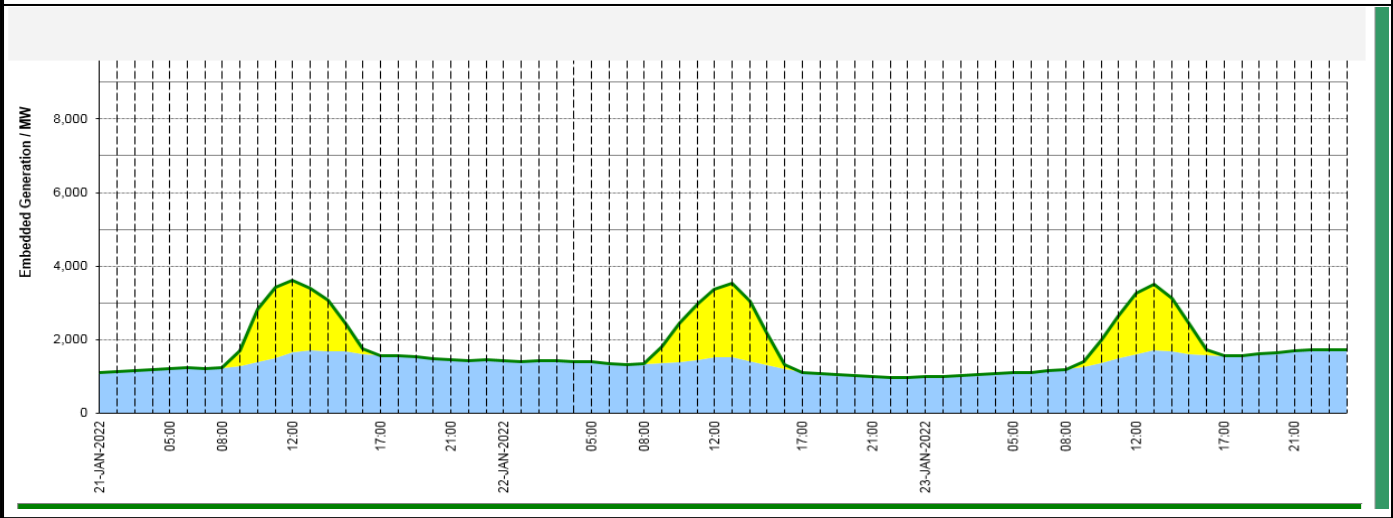
**Wind Power Forecast**



**Expected embedded generation (MWs)**

**Embedded Generation Forecast**

	21-JAN-2022					22-JAN-2022					23-JAN-2022						
	05:00	08:00	12:00	17:00	21:00	00:00	05:00	08:00	12:00	17:00	21:00	00:00	05:00	08:00	12:00	17:00	21:00
Solar (MW)	0	0	1970	2	0	0	0	0	1851	0	0	0	0	0	1657	0	0
Wind (MW)	1204	1232	1644	1567	1450	1421	1392	1345	1530	1109	990	989	1109	1192	1596	1559	1707
STOR (MW)	0	0	0	0	0	0	0	0	0	0	0	0	0	0	0	0	0
<b>Total (MW)</b>	<b>1204</b>	<b>1232</b>	<b>3614</b>	<b>1569</b>	<b>1450</b>	<b>1421</b>	<b>1392</b>	<b>1345</b>	<b>3381</b>	<b>1109</b>	<b>990</b>	<b>989</b>	<b>1109</b>	<b>1192</b>	<b>3253</b>	<b>1559</b>	<b>1707</b>



Weather	Source	Commentary
Latest forecast (Summary)	<a href="#">Met Office</a> <a href="#">SEPA</a> <a href="#">Natural Resources Wales</a>	<p><b>Today:</b> Cloudy across many areas, especially the northwest where some light rain and drizzle is likely. Some brighter spells developing, mainly in the east. Rather chilly in the south, but temperatures above average in the north.</p> <p><b>Tonight:</b> Most parts dry but rather cloudy. A few clear spells possible with some isolated frost and fog. Windy in the far northwest with a little rain or drizzle on hills.</p>
General Weather Concerns e.g. wind, rain, snow, flooding, GB Weather Warnings	<a href="#">Met Office</a> <a href="#">Weather Warnings</a> <a href="#">SEPA</a> <a href="#">Natural Resources Wales</a>	<p><b>UK Weather Warnings</b> No weather warnings are in force for the UK.</p> <p><b>Flood Warnings</b> No flood warnings are currently in force for the UK.</p>

Contains public sector information licensed under the Open Government Licence v1.0

Further Information	
BM Reports	<a href="https://www.bmreports.com">https://www.bmreports.com</a>
System Balancing Reports	<a href="https://www.nationalgrideso.com/balancing-data/system-balancing-reports">https://www.nationalgrideso.com/balancing-data/system-balancing-reports</a>
Forecast Volumes and Costs	<a href="https://www.nationalgrideso.com/balancing-data/forecast-volumes-and-costs">https://www.nationalgrideso.com/balancing-data/forecast-volumes-and-costs</a>
NGESO Insights	<a href="https://www.nationalgrideso.com/insights">https://www.nationalgrideso.com/insights</a>