

**National Electricity  
Transmission System Status Report**

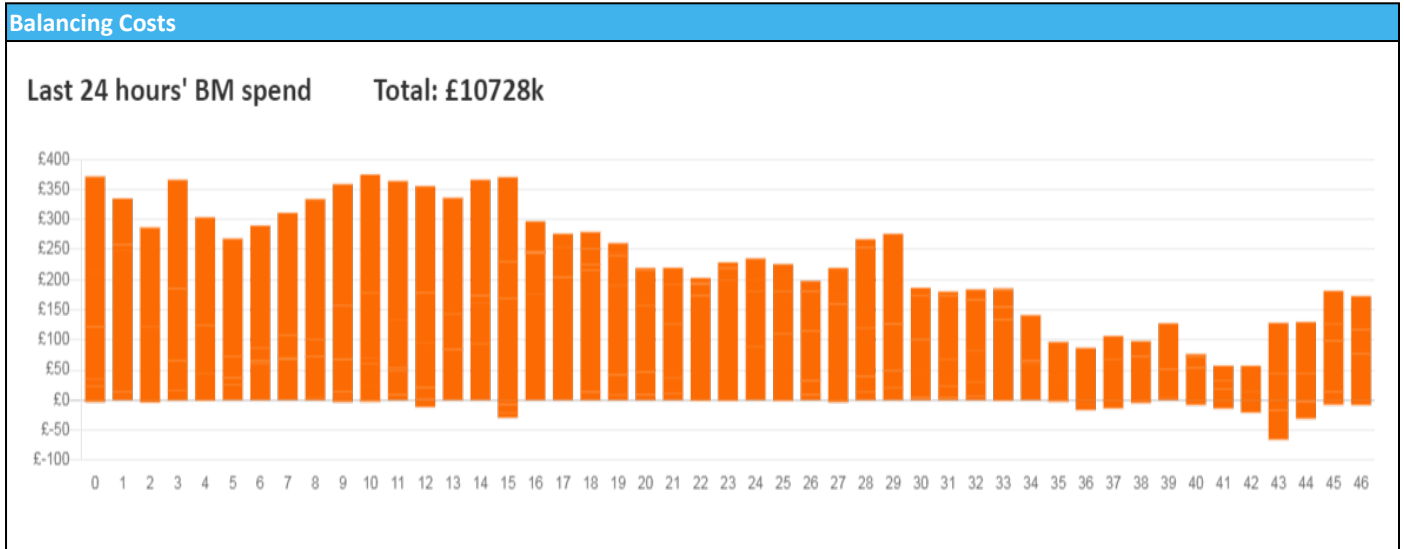


national**grid**ESO

National Electricity Transmission System Status Report  
Friday 31 December 2021

Today's High Level Risk Status Forecast for the next 24h			
General Status		Voltage	
Demand		System Inertia	
System Margins		Weather	
Generation		Transmission	
Active Constraints			
<a href="#">System Warning</a>			

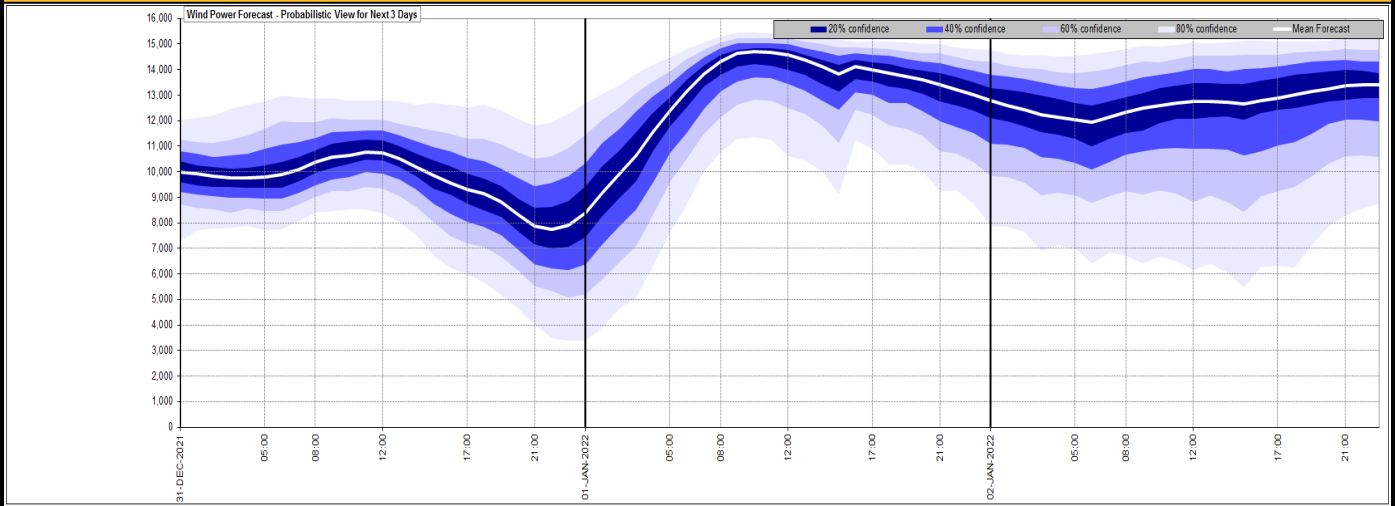
<a href="#">Today's Minimum De-Rated Margin</a>	14263.88 (SP 35)	
Current BMU Largest Loss Risk	Generation	1260 MW
	Demand	560 MW



Yesterday's Market Summary	
<a href="#">Cash Out Price (Max)</a>	£245.00 (SP 27)
<a href="#">Cash Out Price (Min)</a>	-£69.87 (SP 17)
<a href="#">Peak Demand Yesterday</a>	36,798 MW
Minimum Demand	18,300 MW

Interconnector Net Transfer Capacity (MWs)			
Today	Import	Export	Remarks
Netherlands (BritNed)	1100	1133	Fully Available
France (IFA2)	0	0	Outage
Belgium (Nemo)	1020	1020	Fully Available
Ireland (EWIC)	500	530	Fully Available
Northern Ireland (MOYLE)	500	500	Fully Available
NSL	698	793	Partially Available
ElecLink	0	0	Not yet commissioned
France IFA	1000	1000	Partially Available

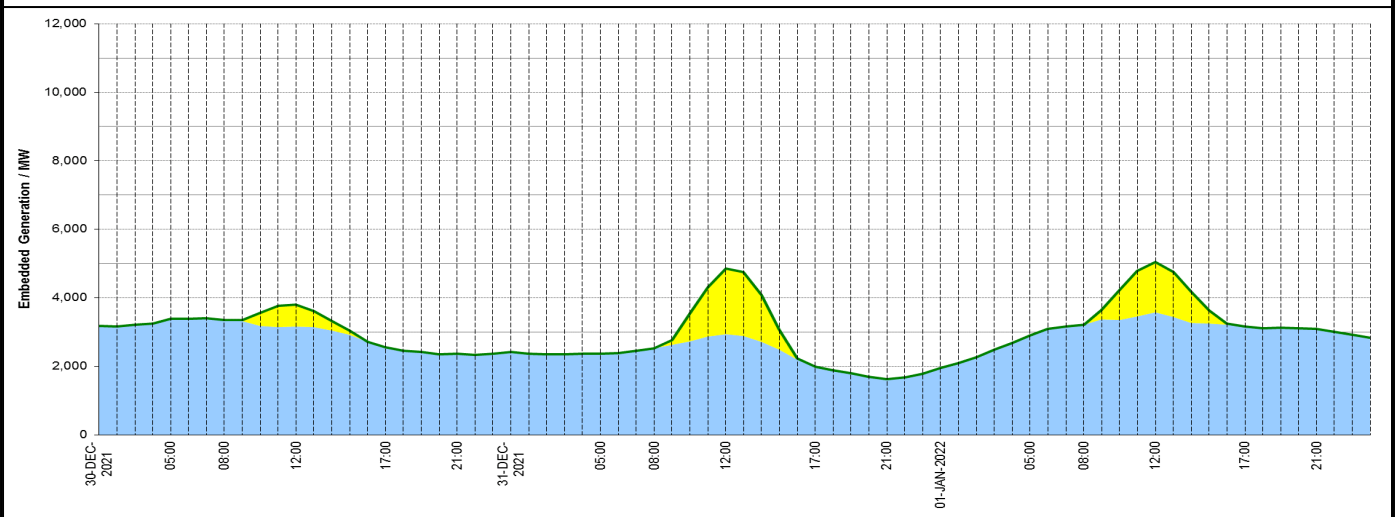
### Wind Power Forecast



### Expected embedded generation (MWs)

#### Embedded Generation Forecast

	30-DEC-2021					31-DEC-2021					01-JAN-2022						
	05:00	08:00	12:00	17:00	21:00	00:00	05:00	08:00	12:00	17:00	21:00	00:00	05:00	08:00	12:00	17:00	21:00
Solar (MW)	0	0	632	0	0	0	0	1913	0	0	0	0	0	1474	0	0	0
Wind (MW)	3393	3344	3163	2566	2364	2420	2376	2516	2936	1989	1633	1948	2900	3214	3568	3161	3085
STOR (MW)	0	0	0	0	0	0	0	0	0	0	0	0	0	0	0	0	0
<b>Total (MW)</b>	<b>3393</b>	<b>3344</b>	<b>3795</b>	<b>2566</b>	<b>2364</b>	<b>2420</b>	<b>2376</b>	<b>2516</b>	<b>4849</b>	<b>1989</b>	<b>1633</b>	<b>1948</b>	<b>2900</b>	<b>3214</b>	<b>5042</b>	<b>3161</b>	<b>3085</b>



Weather	Source	Commentary
Latest forecast (Summary)	<a href="#">Met Office</a> <a href="#">SEPA</a> <a href="#">Natural Resources Wales</a>	<b>Today:</b> Heavy rain moving northwards and becoming slow-moving across central Scotland, gradually easing. Rain clearing quickly eastwards across England and Wales to leave a blustery but very mild day with sunny spells. <b>Tonight:</b> Bands of cloud and rain moving northeastwards across most parts with clear spells in between. Becoming windy in the west with coastal gales, but remaining mild.
General Weather Concerns e.g. wind, rain, snow, flooding, GB Weather Warnings	<a href="#">Met Office</a> <a href="#">Weather Warnings</a> <a href="#">SEPA</a> <a href="#">Natural Resources Wales</a>	<b>UK Weather Warnings</b> No weather warnings are in force for the UK.  <b>Flood Warnings</b> 66 Flood Warnings and alerts in England 2 Flood Warnings and alerts in Scotland 17 Flood Warnings and alerts in Wales

Contains public sector information licensed under the Open Government Licence v1.0

Further Information	
BM Reports	<a href="https://www.bmreports.com">https://www.bmreports.com</a>

Further Information	
System Balancing Reports	<a href="https://www.nationalgrideso.com/balancing-data/system-balancing-reports">https://www.nationalgrideso.com/balancing-data/system-balancing-reports</a>
Forecast Volumes and Costs	<a href="https://www.nationalgrideso.com/balancing-data/forecast-volumes-and-costs">https://www.nationalgrideso.com/balancing-data/forecast-volumes-and-costs</a>
NGESO Insights	<a href="https://www.nationalgrideso.com/insights">https://www.nationalgrideso.com/insights</a>