

**National Electricity  
Transmission System Status Report**

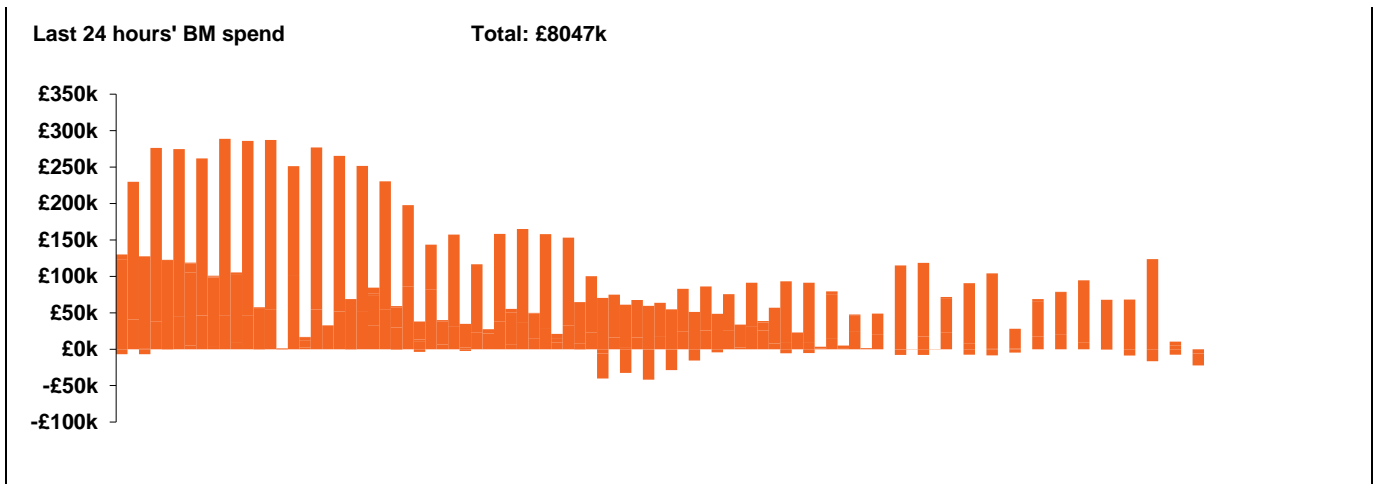


national**grid**ESO

**National Electricity Transmission System Status Report  
Monday 22 November 2021**

Today's High Level Risk Status Forecast for the next 24h			
General Status		Voltage	
Demand		System Inertia	
System Margins		Weather	
Generation		Transmission	
Active Constraints			

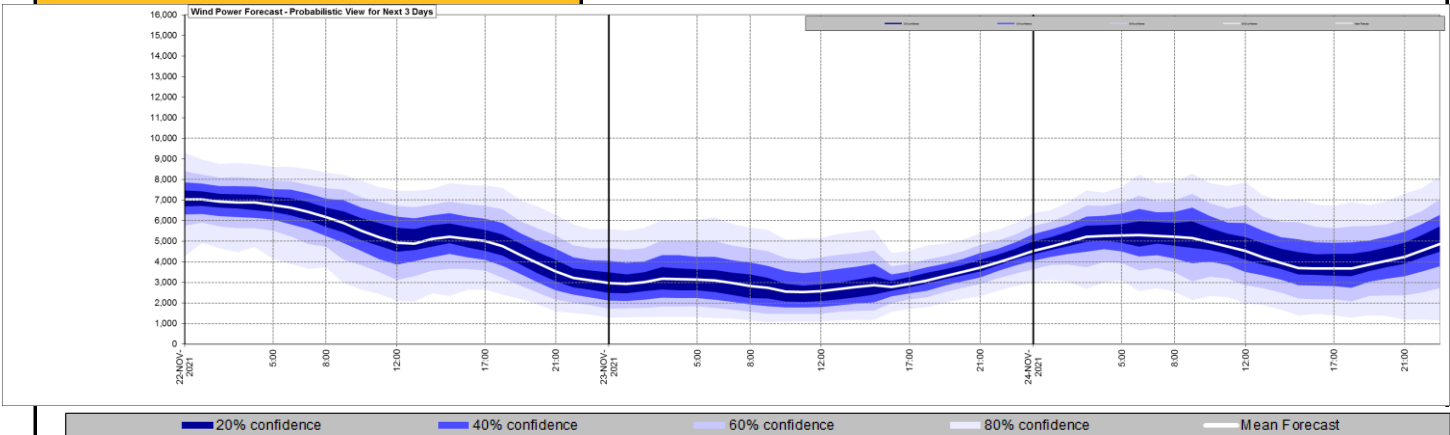
<a href="#">Today's Minimum De-Rated Margin</a>	5487 (SP35)	
<a href="#">System Warnings</a>	None	
Current BMU Largest Loss Risk	Generation	1260 MW
	Demand	560 MW



Yesterday's Market Summary	
<a href="#">Cash out price (Max)</a>	£260.00/MWh (SP39 45,46,)
<a href="#">Cash Out Price (Min)</a>	£61 /MWh (SP14)
<a href="#">Peak Demand Yesterday</a>	39,583 /MWh

Interconnectors Net Transfer Capacity (MWs)			
Today	Import	Export	
Netherlands (BritNed)	1100	1133	Fully Available
France (IFA)	500	500	Partially Available
France (IFA2)	1014	1014	Fully Available
Belgium (Nemo)	1020	1020	Fully Available
Ireland (EWIC)	500	530	Fully Available
Northern Ireland (MOYLE)	500	500	Fully Available
NSL	1400	1400	Fully Available
ElecLink	0	0	Not Available

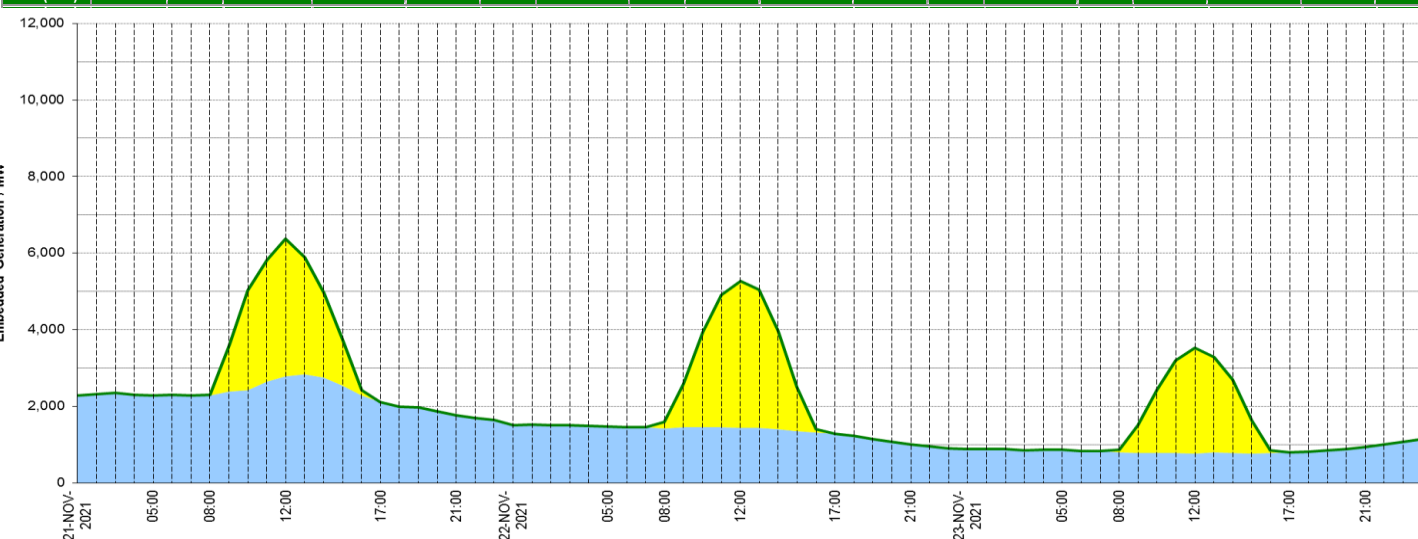
### Wind Power Forecast



### Expected embedded generation (MWs)

#### Embedded Generation Forecast

	21-NOV-2021					22-NOV-2021						23-NOV-2021					
	05:00	08:00	12:00	17:00	21:00	00:00	05:00	08:00	12:00	17:00	21:00	00:00	05:00	08:00	12:00	17:00	21:00
Solar (MW)	0	34	3590	3	0	0	0	164	3826	0	0	0	0	78	2764	0	0
Wind (MW)	2288	2273	2787	2109	1763	1501	1464	1423	1442	1276	1006	874	862	794	755	792	935
STOR (MW)	0	0	0	0	0	0	0	0	0	0	0	0	0	0	0	0	0
<b>Total (MW)</b>	<b>2288</b>	<b>2307</b>	<b>6377</b>	<b>2112</b>	<b>1763</b>	<b>1501</b>	<b>1464</b>	<b>1587</b>	<b>5268</b>	<b>1276</b>	<b>1006</b>	<b>874</b>	<b>862</b>	<b>872</b>	<b>3519</b>	<b>792</b>	<b>935</b>



Weather	Source	Commentary
Latest forecast (Summary)	<a href="#">Met Office</a> <a href="#">SEPA</a> <a href="#">Natural Resources Wales</a>	<p><b>Today:</b> Many places dry with plenty of sunshine after a cold start. A few showers affecting east and southeast coasts of England. Turning milder and cloudier across northern Scotland with a little light rain or drizzle in places.</p> <p><b>Tonight:</b> Increasingly cloudy in the north with a few spots of light rain or drizzle. Clear skies in the south allowing a widespread frost and a few fog patches to form.</p>
General Weather Concerns e.g. wind, rain, snow, flooding, GB Weather Warnings	<a href="#">Met Office Weather Warnings</a> <a href="#">SEPA</a> <a href="#">Natural Resources Wales</a>	<p><b>UK Weather Warnings:</b> None</p> <p><b>UK Flood Warnings:</b> None</p>

*Contains public sector information licensed under the Open Government Licence v1.0*

Further Information	
BM Reports	<a href="https://www.bmreports.com">https://www.bmreports.com</a>
System Balancing Reports	<a href="https://www.nationalgrideso.com/balancing-data/system-balancing-reports">https://www.nationalgrideso.com/balancing-data/system-balancing-reports</a>
Forecast Volumes and Costs	<a href="https://www.nationalgrideso.com/balancing-data/forecast-volumes-and-costs">https://www.nationalgrideso.com/balancing-data/forecast-volumes-and-costs</a>
NGESO Insights	<a href="https://www.nationalgrideso.com/insights">https://www.nationalgrideso.com/insights</a>