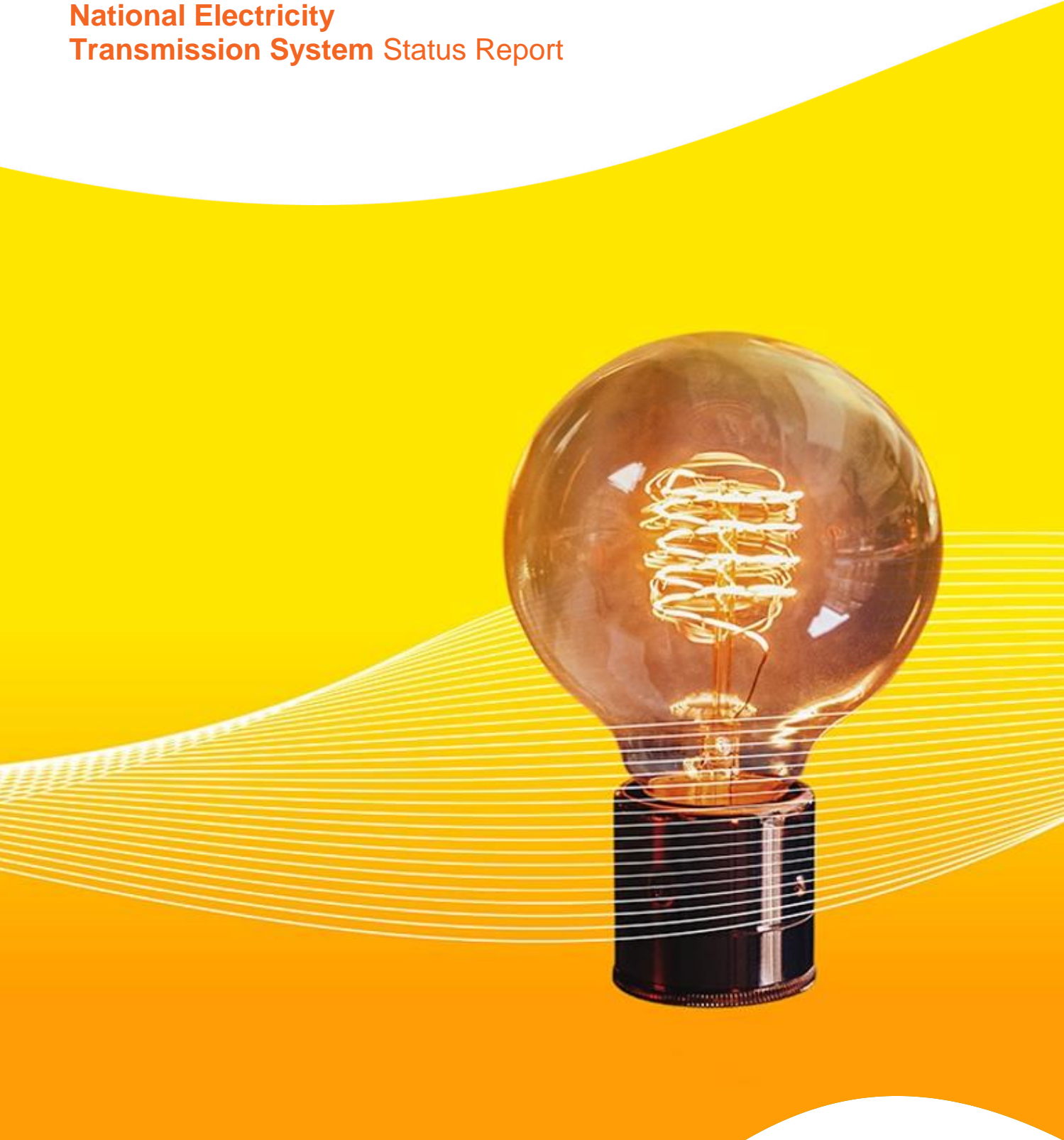


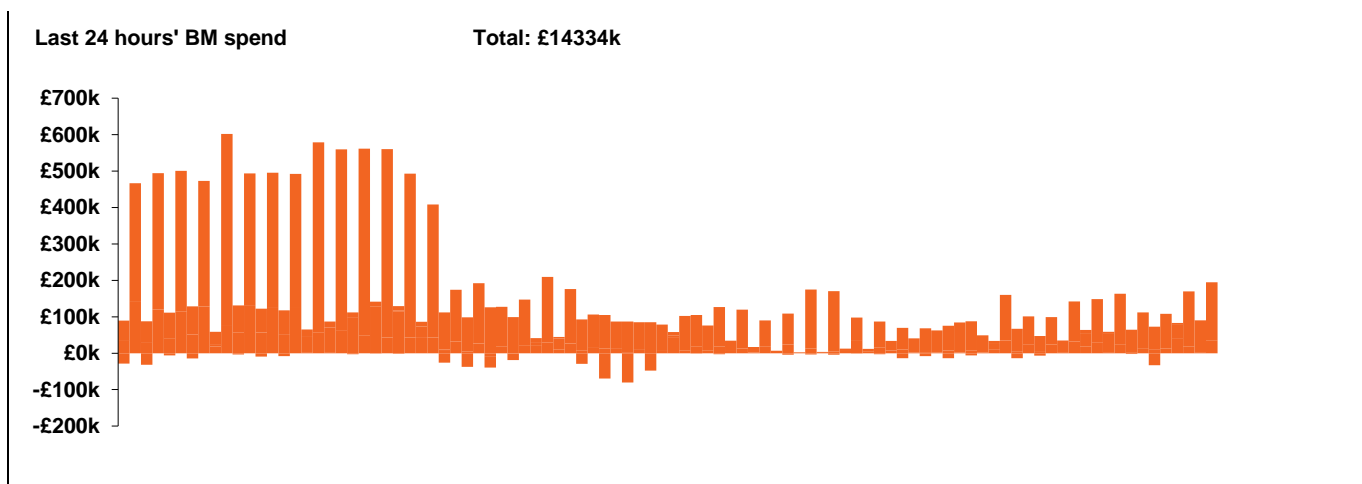
**National Electricity
Transmission System Status Report**



National Electricity Transmission System Status Report
Saturday 20 November 2021

Today's High Level Risk Status Forecast for the next 24h			
General Status		Voltage	
Demand		System Inertia	
System Margins		Weather	
Generation		Transmission	
Active Constraints			

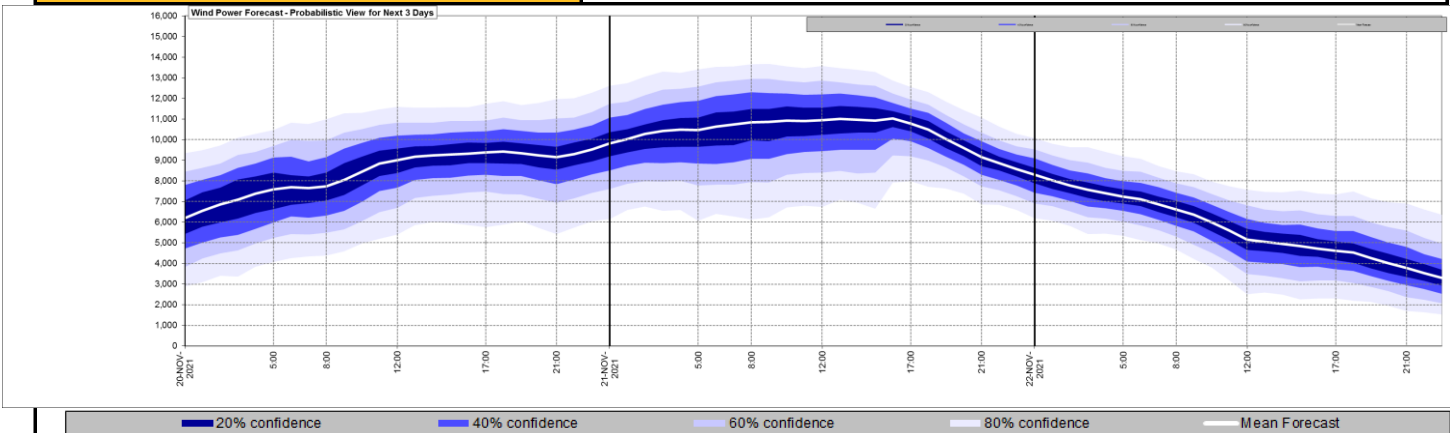
Today's Minimum De-Rated Margin	9754 (SP35)	
System Warnings	None	
Current BMU Largest Loss Risk	Generation	1260 MW
	Demand	560 MW



Yesterday's Market Summary	
Cash out price (Max)	£270.00/MWh (SP34)
Cash Out Price (Min)	£50 /MWh (SP38)
Peak Demand Yesterday	39,975 /MWh

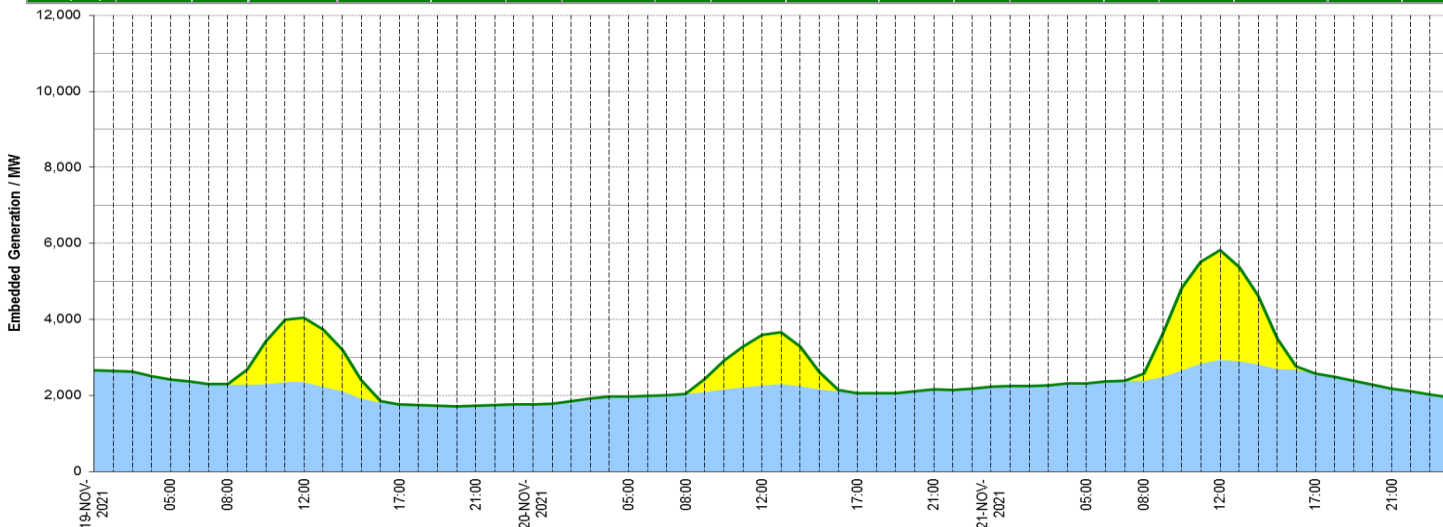
Interconnectors Net Transfer Capacity (MWs)			
Today	Import	Export	
Netherlands (BritNed)	1100	1133	Fully Available
France (IFA)	500	500	Partially Available
France (IFA2)	1014	1014	Fully Available
Belgium (Nemo)	1020	1020	Fully Available
Ireland (EWIC)	500	530	Fully Available
Northern Ireland (MOYLE)	500	500	Fully Available
NSL	1400	1400	Fully Available
ElecLink	0	0	Not Available

Wind Power Forecast



Expected embedded generation (MWs)

	19-NOV-2021					20-NOV-2021					21-NOV-2021						
	05:00	08:00	12:00	17:00	21:00	00:00	05:00	08:00	12:00	17:00	21:00	00:00	05:00	08:00	12:00	17:00	21:00
Solar (MW)	0	15	1680	1	0	0	0	1333	0	0	0	0	191	2883	0	0	
Wind (MW)	2427	2276	2356	1760	1730	1763	1976	2048	2268	2060	2157	2223	2321	2379	2943	2582	2186
STOR (MW)	0	0	0	0	0	0	0	0	0	0	0	0	0	0	0	0	
Total (MW)	2427	2291	4036	1761	1730	1763	1976	2048	3601	2060	2157	2223	2321	2570	5826	2582	2186



Weather	Source	Commentary
Latest forecast (Summary)	Met Office SEPA Natural Resources Wales	<p>Today: Dry and fairly cloudy across southern areas. Further north a band of mostly light rain moves southwards and reaches central areas by the end of the day. Showers follow the rain across north and northwest, falling as snow over hills.</p> <p>Tonight: Light patchy rain clears from southern areas. A rather cold northerly wind follows across all parts, mostly dry inland, but showers moving inland from north-facing coastlines.</p>
General Weather Concerns e.g. wind, rain, snow, flooding, GB Weather Warnings	Met Office Weather Warnings SEPA Natural Resources Wales	<p>UK Weather Warnings: None</p> <p>UK Flood Warnings: 1 Flood warning for Scotland</p>

Contains public sector information licensed under the Open Government Licence v1.0

Further Information	
BM Reports	https://www.bmreports.com
System Balancing Reports	https://www.nationalgrideso.com/balancing-data/system-balancing-reports
Forecast Volumes and Costs	https://www.nationalgrideso.com/balancing-data/forecast-volumes-and-costs
NGESO Insights	https://www.nationalgrideso.com/insights