

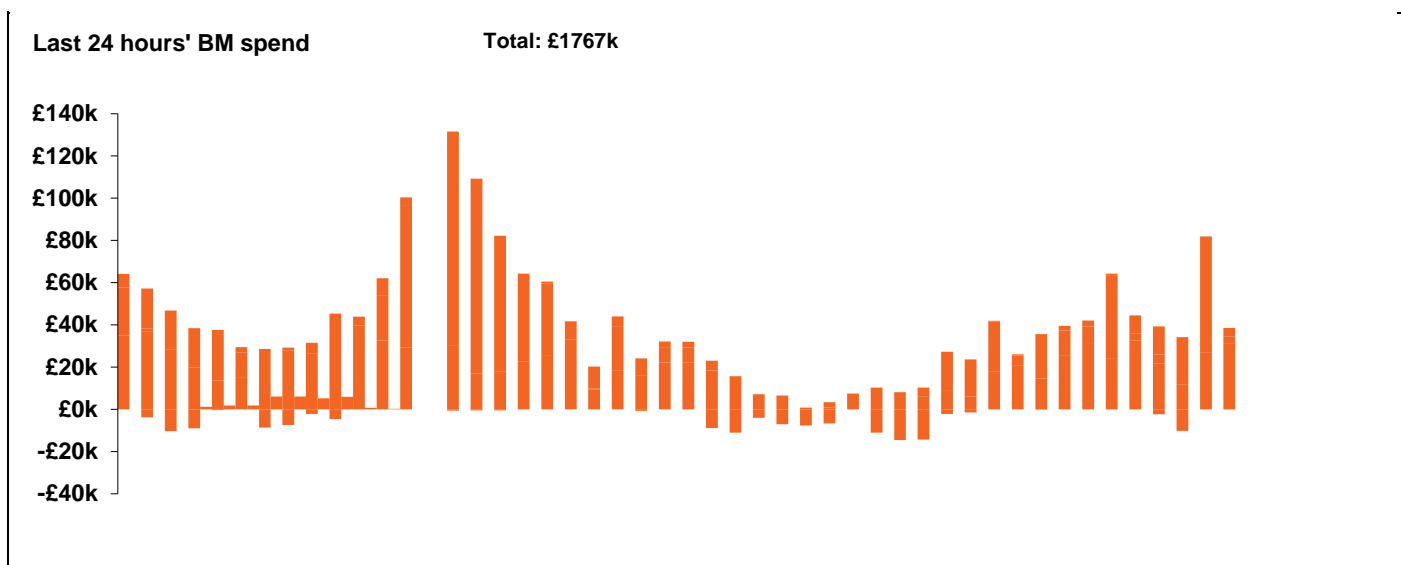
**National Electricity
Transmission System Status Report**



National Electricity Transmission System Status Report
Wednesday 11 August 2021

| Today's High Level Risk Status Forecast for the next 24h | | | |
|--|--|----------------|--|
| General Status | | Voltage | |
| Demand | | System Inertia | |
| System Margins | | Weather | |
| Generation | | Transmission | |
| Active Constraints | | | |

| | | |
|---|-----------------|--------|
| Today's Minimum De-Rated Margin | 7175.78 (SP 18) | |
| System Warnings | None | |
| Current BMU Largest Loss Risk | Generation | 1260MW |
| | Demand | 560MW |

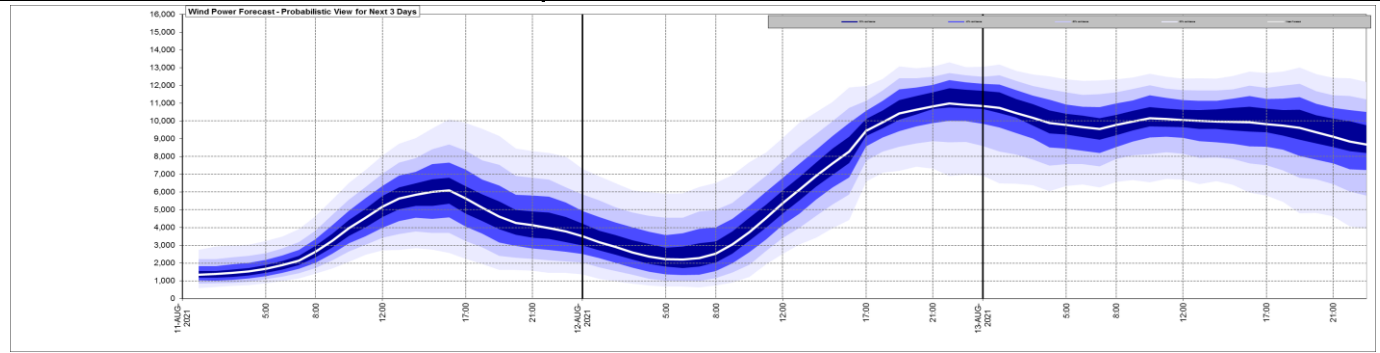


| Yesterday's Market Summary | |
|---------------------------------------|---------------------|
| Cash out price (Max) | £152.50/MWh (SP 40) |
| Cash Out Price (Min) | £26.00/MWh (SP 28) |
| Peak Demand Yesterday | 31,030MW |

Interconnectors
Net Transfer Capacity (MWs)

| Today | Import | Export | |
|--------------------------|--------|--------|-----------------|
| Netherlands (BritNed) | 1100 | 1133 | Fully Available |
| France (IFA) | 2000 | 2000 | Fully Available |
| France (IFA2) | 1014 | 1014 | Fully Available |
| Belgium (Nemo) | 1020 | 1020 | Fully Available |
| Ireland (EWIC) | 500 | 530 | Fully Available |
| Northern Ireland (MOYLE) | 500 | 500 | Fully Available |

Wind Power Forecast



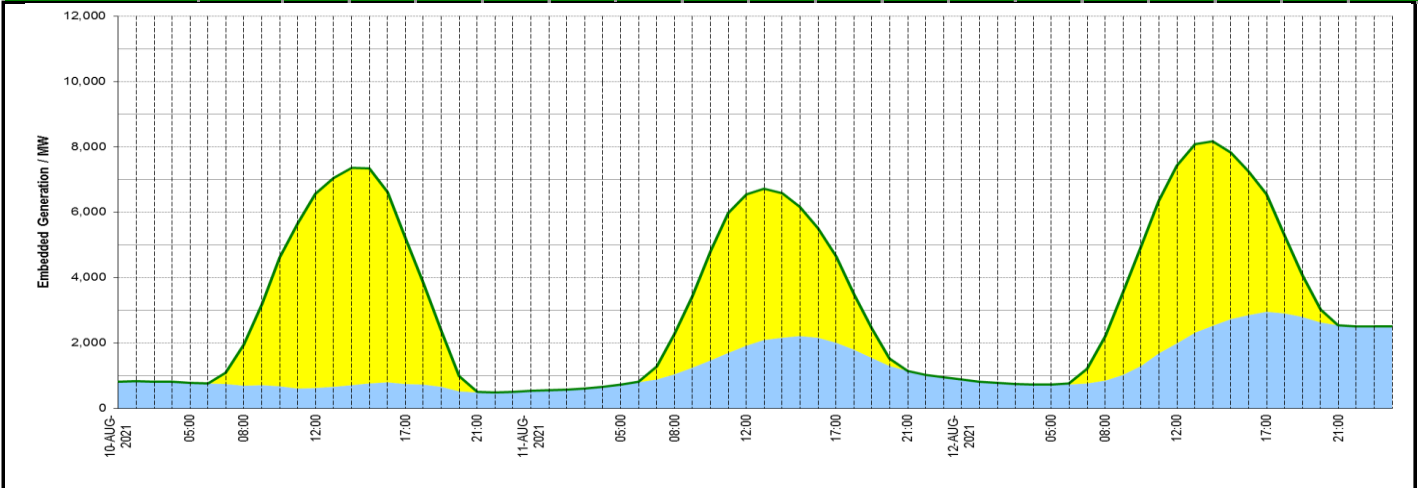
Key:

- 20% confidence
- 40% confidence
- 60% confidence
- 80% confidence
- Mean Forecast

Expected embedded generation (MWs)

Embedded Generation Forecast

| | 10-AUG-2021 | | | | | 11-AUG-2021 | | | | | 12-AUG-2021 | | | | | | |
|-------------------|-------------|-------------|-------------|-------------|------------|-------------|------------|-------------|-------------|-------------|-------------|------------|------------|-------------|-------------|-------------|-------------|
| | 05:00 | 08:00 | 12:00 | 17:00 | 21:00 | 00:00 | 05:00 | 08:00 | 12:00 | 17:00 | 21:00 | 00:00 | 05:00 | 08:00 | 12:00 | 17:00 | 21:00 |
| Solar (MW) | 0 | 1260 | 5950 | 4500 | 5 | 0 | 0 | 1228 | 4625 | 2635 | 0 | 0 | 0 | 1371 | 5447 | 3580 | 0 |
| Wind (MW) | 784 | 692 | 615 | 738 | 491 | 534 | 723 | 1042 | 1919 | 2012 | 1141 | 879 | 724 | 840 | 1989 | 2960 | 2540 |
| STOR (MW) | 0 | 0 | 0 | 0 | 0 | 0 | 0 | 0 | 0 | 0 | 0 | 0 | 0 | 0 | 0 | 0 | 0 |
| Total (MW) | 784 | 1952 | 6565 | 5238 | 496 | 534 | 723 | 2270 | 6544 | 4647 | 1141 | 879 | 724 | 2211 | 7436 | 6540 | 2540 |



| Weather | Source | Commentary |
|---|---|---|
| Latest forecast (Summary) | Met Office SEPA Natural Resources Wales | <p>Today: Cloud and outbreaks of rain over Northern Ireland spreading into Scotland, northern England and Wales, some heavy rain on hills, along with a freshening wind. Elsewhere staying dry with sunny spells, best of the warm sunshine in the southeast.</p> <p>Tonight: Light rain and drizzle sinking southwards across the rest of Wales, but slowing across parts of southwest, central and eastern England, where mild. Clearer elsewhere, quite chilly in north.</p> |
| General Weather Concerns e.g. wind, rain, snow, flooding, GB Weather Warnings | Met Office Weather SEPA Natural Resources Wales | <p>None</p> <p>Flood Warnings: 0 Flood Warnings and 3 Flood Alerts issued for England. 0 Flood Warnings and 7 Flood Alerts issued for Scotland. 0 Flood Warnings and 0 Flood Alerts issued for Wales.</p> |

Contains public sector information licensed under the Open Government Licence v1.0

| Further Information | |
|----------------------------|---|
| BM Reports | https://www.bmreports.com |
| System Balancing Reports | https://www.nationalgrideso.com/balancing-data/system-balancing-reports |
| Forecast Volumes and Costs | https://www.nationalgrideso.com/balancing-data/forecast-volumes-and-costs |
| NGESO Insights | https://www.nationalgrideso.com/insights |