

**National Electricity
Transmission System Status Report**



national**grid**ESO

**National Electricity Transmission System Status Report
Monday 21 June 2021**

Today's High Level Risk Status Forecast for the next 24h			
General Status		Voltage	
Demand		System Inertia	
System Margins		Weather	
Generation		Transmission	
Active Constraints			

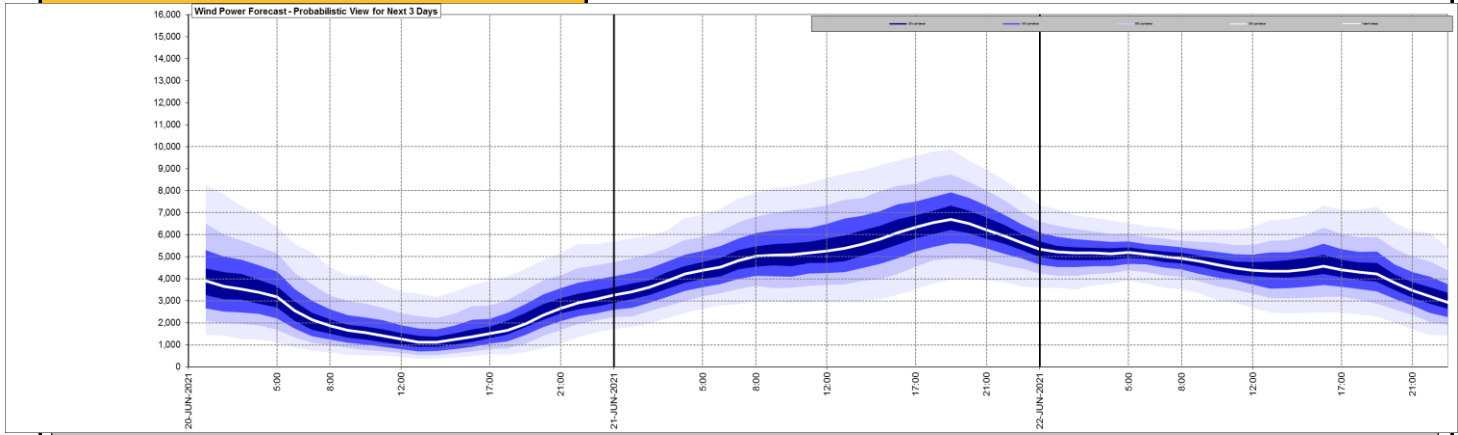
Today's Minimum De-Rated Margin	6150 (SP 23)	
System Warnings	None	
Current BMU Largest Loss Risk	Generation	1260MW
	Demand	560MW



Yesterday's Market Summary	
Cash out price (Max)	£112.40MWh (SP23-28)
Cash Out Price (Min)	£28MWh (SP46)
Peak Demand Yesterday	29,594 MW

Interconnectors Net Transfer Capacity (MWs)			
Today	Import	Export	
Netherlands (BritNed)	1100	1133	Fully available
France (IFA)	2000	2000	Fully available
France (IFA2)	1014	1014	Fully Available
Belgium (Nemo)	1020	1020	Fully Available
Ireland (EWIC)	500	530	Fully Available
Northern Ireland (MOYLE)	395	500	Partially available

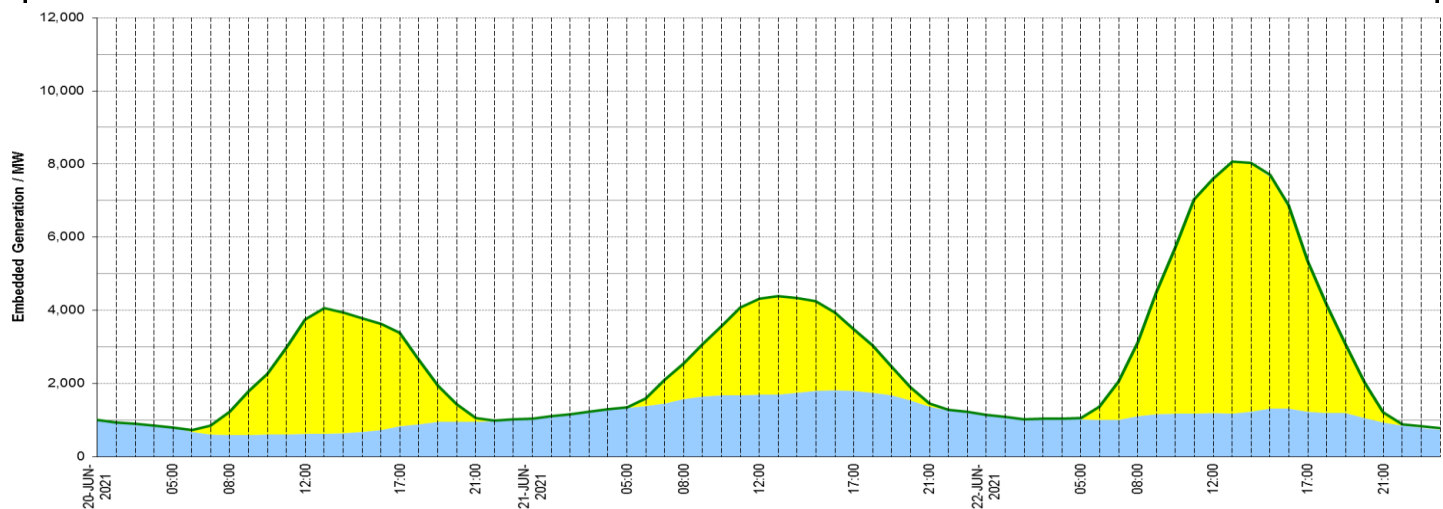
Wind Power Forecast



Expected embedded generation (MWs)

Embedded Generation Forecast

	20-JUN-2021					21-JUN-2021					22-JUN-2021						
	05:00	08:00	12:00	17:00	21:00	00:00	05:00	08:00	12:00	17:00	21:00	00:00	05:00	08:00	12:00	17:00	21:00
Solar (MW)	0	643	3120	2560	114	0	0	958	2644	1701	76	0	17	2032	6412	4064	235
Wind (MW)	795	590	626	829	949	1039	1337	1567	1688	1804	1372	1141	1021	1107	1185	1233	939
STOR (MW)	0	0	0	0	0	0	0	0	0	0	0	0	0	0	0	0	0
Total (MW)	795	1233	3746	3389	1063	1039	1352	2537	4322	3473	1454	1143	1049	3121	7602	5339	1219



Weather	Source	Commentary
<p>Latest forecast (Summary)</p>	<p>Met Office SEPA Natural Resources Wales</p>	<p>Today: Parts of southern England will see rain, perhaps heavy near the south coast - under any persistent rain feeling cool, emphasised by a brisk breeze. Elsewhere odd showers are possible but many areas dry with some sunshine and pleasantly warm..</p> <p>Tonight: Rain in the south easing, though odd heavier bursts may continue in the southeast - cloudier areas here staying quite mild. Elsewhere dry with clear spells, and turning out chilly.</p>
<p>General Weather Concerns e.g. wind, rain, snow, flooding, GB Weather Warnings</p>	<p>Met Office Weather SEPA Natural Resources Wales</p>	<p>Weather Warnings: None</p> <p>Flood Warnings: England 1</p>

Contains public sector information licensed under the Open Government Licence v1.0

Further Information	
<p>BM Reports</p>	<p>https://www.bmreports.com</p>
<p>System Balancing Reports</p>	<p>https://www.nationalgrideso.com/balancing-data/system-balancing-reports</p>
<p>Forecast Volumes and Costs</p>	<p>https://www.nationalgrideso.com/balancing-data/forecast-volumes-and-costs</p>
<p>NGESO Insights</p>	<p>https://www.nationalgrideso.com/insights</p>