

**National Electricity  
Transmission System Status Report**

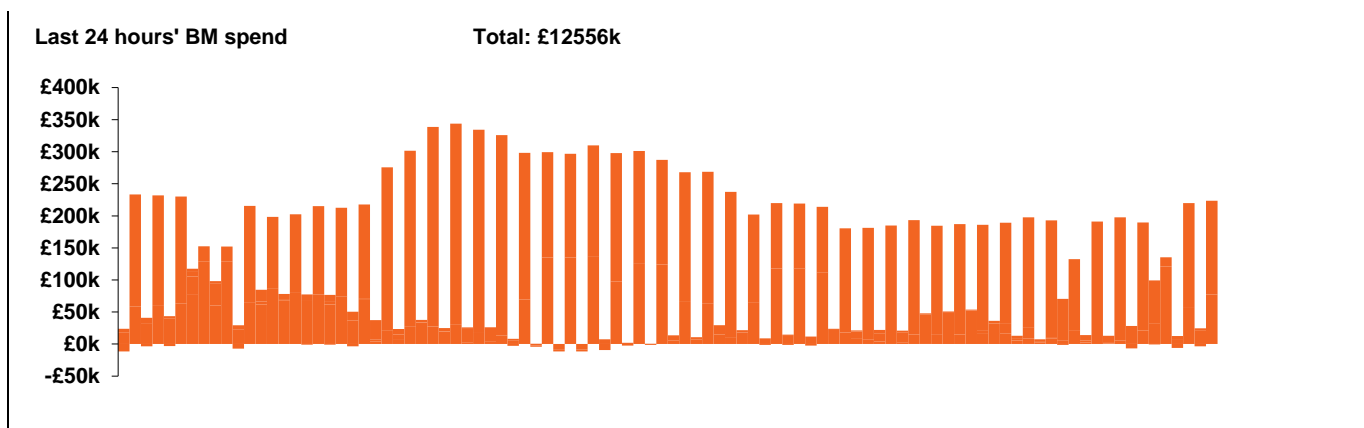


national**grid**ESO

**National Electricity Transmission System Status Report**  
Friday 12 March 2021

Today's High Level Risk Status Forecast for the next 24h			
General Status		Voltage	
Demand		System Inertia	
System Margins		Weather	
Generation		Transmission	
Active Constraints			

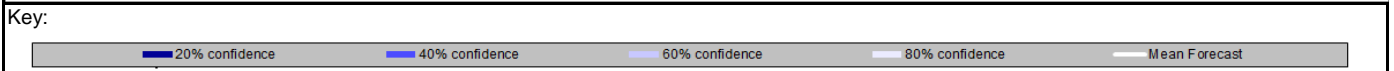
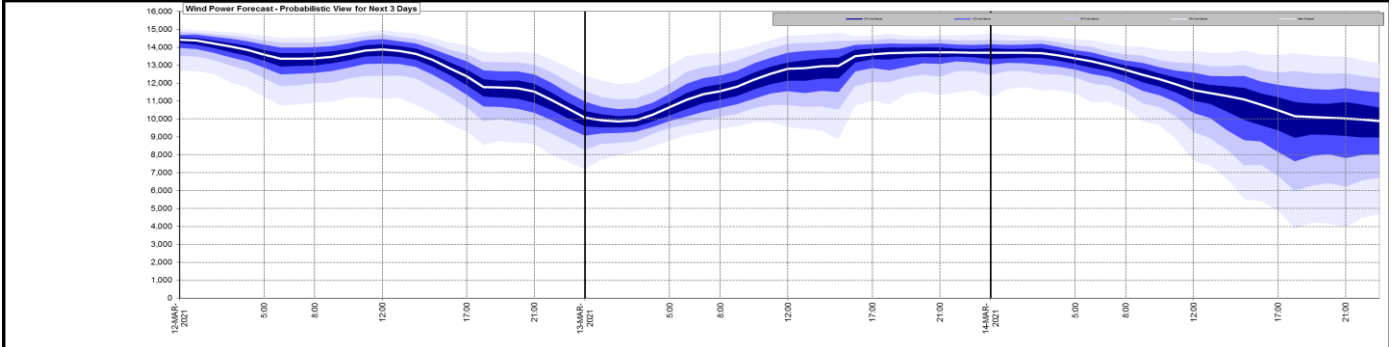
<u>Today's Minimum De-Rated Margin</u>	5904MW SP 38	
<u>System Warnings</u>	None	
Current BMU Largest Loss Risk	Generation	1260 MW
	Demand	560 MW



Yesterday's Market Summary	
<u>Cash out price (Max)</u>	£83.00/MWh (SP 36-38)
<u>Cash Out Price (Min)</u>	£-61.00 /MWh (SP 4 & 46)
<u>Peak Demand Yesterday</u>	37,950MW

Interconnectors			
Net Transfer Capacity (MWs)			
Today	Import	Export	
Netherlands (BritNed)	0	0	Unavailable
France (IFA)	1500	1500	Partially available
France (IFA2)	1004	1004	Fully available
Belgium (Nemo)	1020	1020	Fully available
Ireland (EWIC)	500	530	Fully available
Northern Ireland (MOYLE)	500	500	Fully available

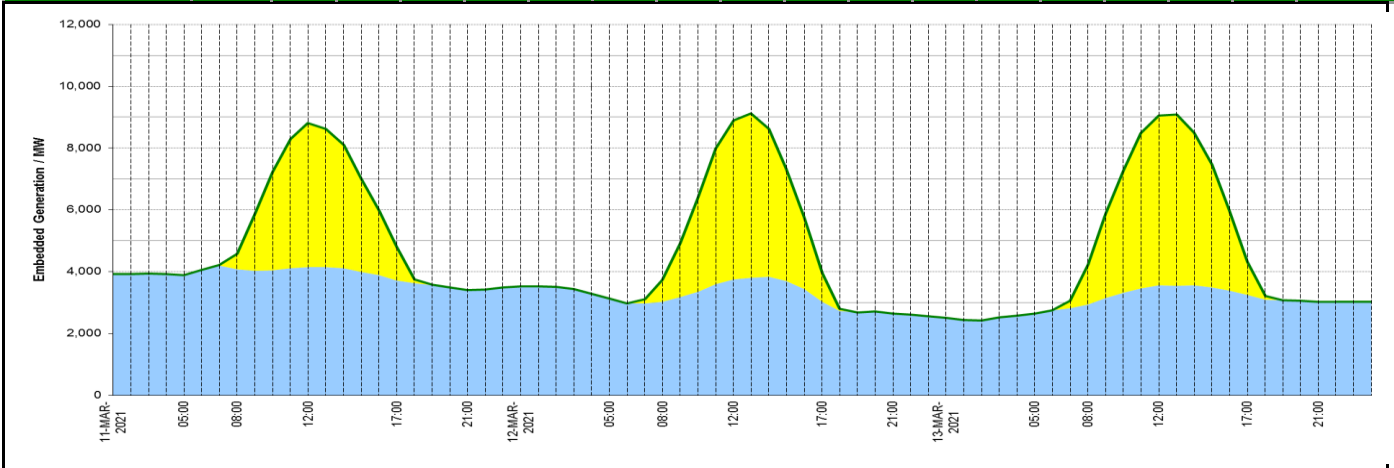
### Wind Power Forecast



### Expected embedded generation (MWs)

#### Embedded Generation Forecast

	11-MAR-2021					12-MAR-2021					13-MAR-2021						
	05:00	08:00	12:00	17:00	21:00	00:00	05:00	08:00	12:00	17:00	21:00	00:00	05:00	08:00	12:00	17:00	21:00
<b>Solar (MW)</b>	0	493	4660	1100	0	0	0	705	5158	927	0	0	0	1294	5485	1065	0
<b>Wind (MW)</b>	3896	4077	4149	3719	3402	3517	3134	3024	3744	3026	2638	2499	2647	2938	3562	3248	3023
<b>STOR (MW)</b>	0	0	0	0	0	0	0	0	0	0	0	0	0	0	0	0	0
<b>Total (MW)</b>	3896	4570	8809	4819	3402	3517	3134	3729	8902	3953	2638	2499	2647	4232	9047	4313	3023



Weather	Source	Commentary
Latest forecast (Summary)	<a href="#">Met Office</a> <a href="#">SEPA</a> <a href="#">Natural Resources Wales</a>	<p><b>Today:</b> Bands of showers, some heavy with hail, moving eastwards this morning, else sunny spells and scattered showers, mainly in the north and west. Showers falling as snow over northern hills.</p> <p>.</p> <p><b>Tonight:</b> Showers in the west soon merging into longer spells of rain moving east overnight, with some snow over northern hills. Very windy in the far south-west. Frost in far north.</p>
General Weather Concerns e.g. wind, rain, snow, flooding, GB Weather Warnings	<a href="#">Met Office Weather Warnings</a> <a href="#">SEPA</a> <a href="#">Natural Resources Wales</a>	<p><b>No warnings in force</b></p> <p><b>Yellow warning of snow</b></p> <p><b>Areas affected: Central, Tayside &amp; Fife   Highlands &amp; Eilean Siar   Strathclyde</b></p> <p><b>Yellow warning of ice</b></p> <p><b>Areas affected: Central, Tayside &amp; Fife   Highlands &amp; Eilean Siar   Strathclyde</b></p>
		<p><b>UK Flood Warnings:</b> 7 Flood Warning issued for England. 3 Flood Warning issued for Scotland. 0 Flood Warnings issued for Wales.</p>

*Contains public sector information licensed under the Open Government Licence v1.0*

Further Information	
BM Reports	<a href="https://www.bmreports.com">https://www.bmreports.com</a>
System Balancing Reports	<a href="https://www.nationalgrideso.com/balancing-data/system-balancing-reports">https://www.nationalgrideso.com/balancing-data/system-balancing-reports</a>
Forecast Volumes and Costs	<a href="https://www.nationalgrideso.com/balancing-data/forecast-volumes-and-costs">https://www.nationalgrideso.com/balancing-data/forecast-volumes-and-costs</a>
NGESO Insights	<a href="https://www.nationalgrideso.com/insights">https://www.nationalgrideso.com/insights</a>