

**National Electricity
Transmission System Status Report**

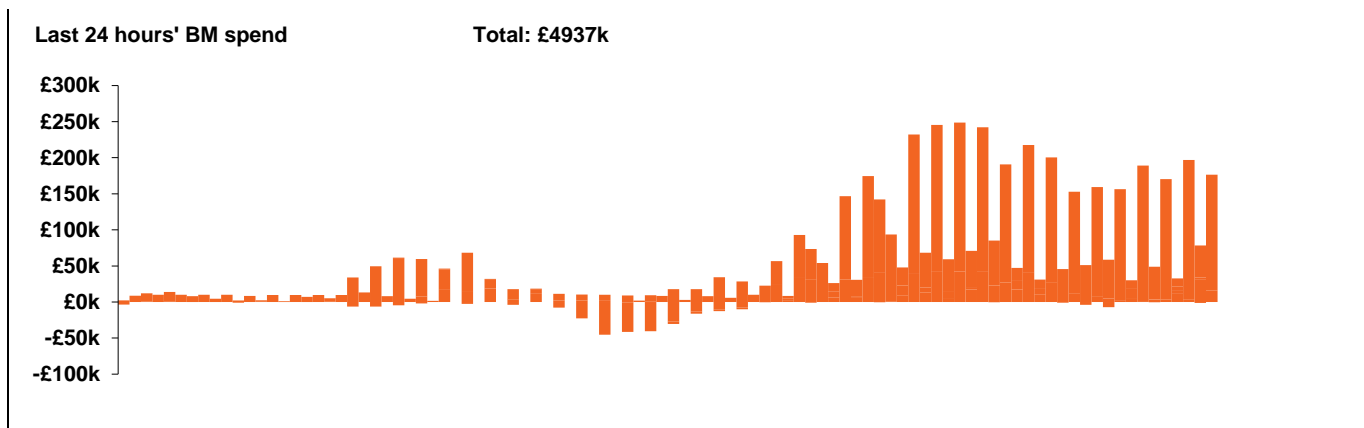


national**grid**ESO

National Electricity Transmission System Status Report
Wednesday 10 March 2021

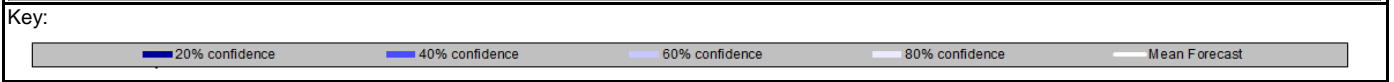
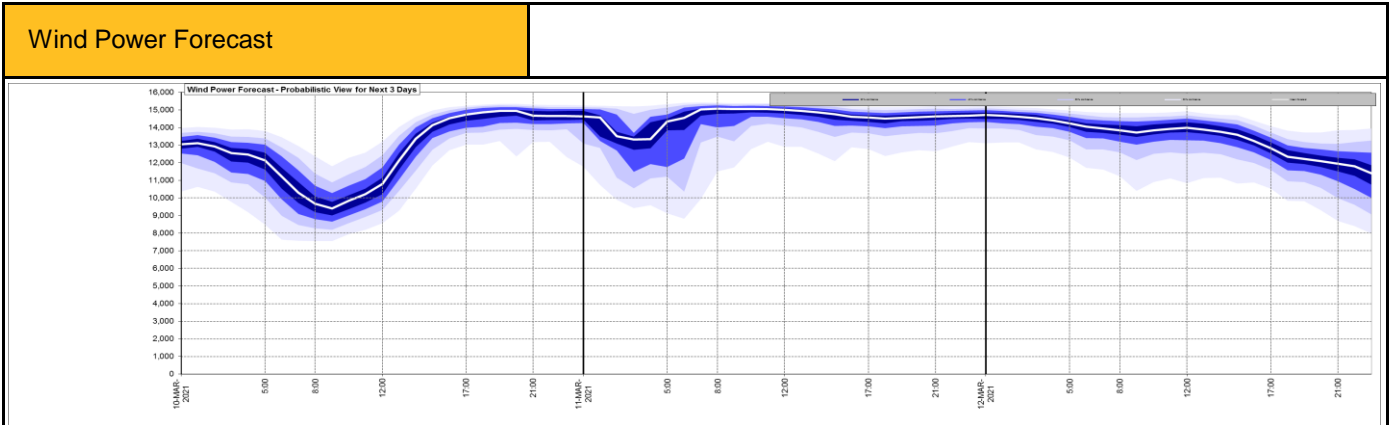
Today's High Level Risk Status Forecast for the next 24h			
General Status		Voltage	
Demand		System Inertia	
System Margins		Weather	
Generation		Transmission	
Active Constraints			

Today's Minimum De-Rated Margin	9343MW SP 26	
System Warnings	None	
Current BMU Largest Loss Risk	Generation	1260 MW
	Demand	560 MW



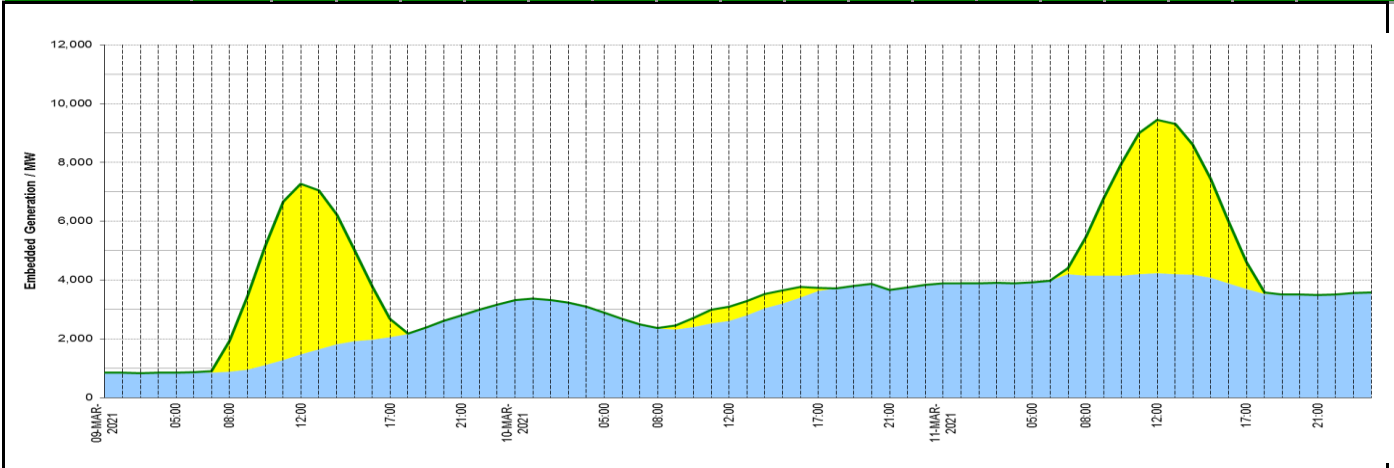
Yesterday's Market Summary	
Cash out price (Max)	£94.45 /MWh (SP 14)
Cash Out Price (Min)	£4.55 /MWh (SP 24-28,31,34)
Peak Demand Yesterday	40,678 MW

Interconnectors			
Net Transfer Capacity (MWs)			
Today	Import	Export	
Netherlands (BritNed)	0	0	Unavailable
France (IFA)	1500	1500	Partially available
France (IFA2)	1004	1004	Fully available
Belgium (Nemo)	1020	1020	Fully available
Ireland (EWIC)	500	530	Fully available
Northern Ireland (MOYLE)	500	500	Fully available



Expected embedded generation (MWs)

Embedded Generation Forecast	09-MAR-2021					10-MAR-2021					11-MAR-2021						
	05:00	08:00	12:00	17:00	21:00	00:00	05:00	08:00	12:00	17:00	21:00	00:00	05:00	08:00	12:00	17:00	21:00
Solar (MW)	0	1050	5810	620	0	0	0	33	485	107	0	0	0	1326	5210	905	0
Wind (MW)	847	888	1469	2059	2795	3312	2891	2343	2613	3629	3671	3889	3925	4148	4234	3700	3486
STOR (MW)	0	0	0	0	0	0	0	0	0	0	0	0	0	0	0	0	0
Total (MW)	847	1938	7279	2679	2795	3312	2891	2376	3098	3736	3671	3889	3925	5474	9444	4605	3486



Weather	Source	Commentary
Latest forecast (Summary)	Met Office SEPA Natural Resources Wales	<p>Today:</p> <p>Sunny intervals and heavy showers in the north at first, elsewhere cloudy and windy with outbreaks of rain, turning heavy at times. Gales for many coastal areas though a period of lighter winds for northern areas during the day.</p> <p>Tonight:</p> <p>Wet and windy conditions continuing though turning more showery with drier periods developing. Very strong winds later for England and Wales with inland gales. Mild for most.</p>
General Weather Concerns e.g. wind, rain, snow, flooding, GB Weather Warnings	Met Office Weather Warnings SEPA Natural Resources Wales	<p>No warnings in force Yellow warning of wind</p> <p>Areas affected: East Midlands East of England London & South East England North East England North West England South West England Wales West Midlands Yorkshire & Humber</p> <p>Starts: 21:00 GMT on Wed 10 March</p> <p>Ends: 15:00 GMT on Thu 11 March</p>
		<p>UK Flood Warnings:</p> <p>1 Flood Warning issued for England. 5 Flood Warning issued for Scotland. 0 Flood Warnings issued for Wales.</p>

Contains public sector information licensed under the Open Government Licence v1.0

Further Information	
BM Reports	https://www.bmreports.com
System Balancing Reports	https://www.nationalgrideso.com/balancing-data/system-balancing-reports
Forecast Volumes and Costs	https://www.nationalgrideso.com/balancing-data/forecast-volumes-and-costs
NGESO Insights	https://www.nationalgrideso.com/insights