

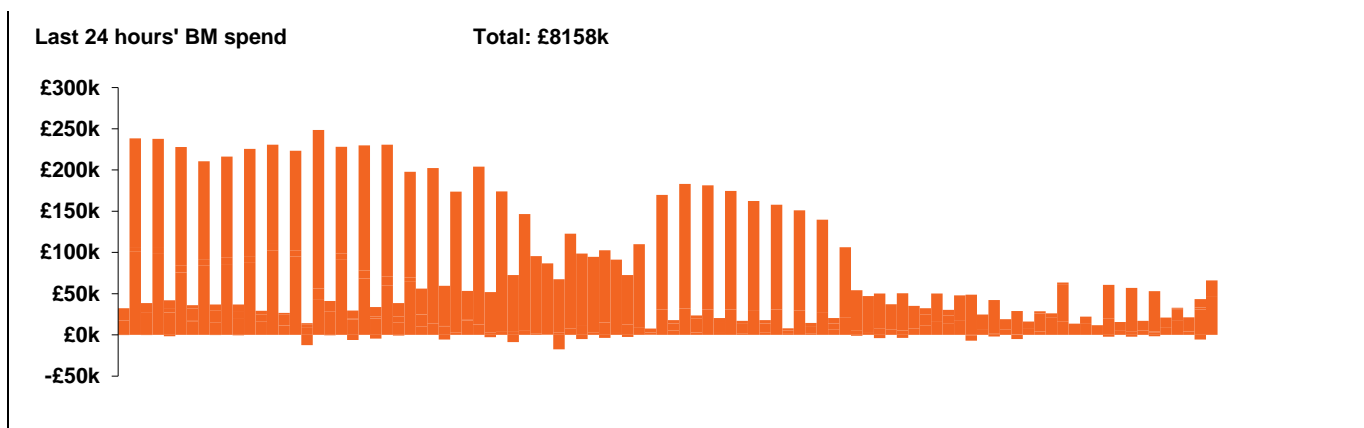
**National Electricity  
Transmission System Status Report**



**National Electricity Transmission System Status Report**  
Thursday 25 February 2021

Today's High Level Risk Status Forecast for the next 24h			
General Status	<span style="background-color: #00FF00; width: 20px; height: 15px;"></span>	Voltage	<span style="background-color: #00FF00; width: 20px; height: 15px;"></span>
Demand	<span style="background-color: #00FF00; width: 20px; height: 15px;"></span>	System Inertia	<span style="background-color: #00FF00; width: 20px; height: 15px;"></span>
System Margins	<span style="background-color: #FFA500; width: 20px; height: 15px;"></span>	Weather	<span style="background-color: #00FF00; width: 20px; height: 15px;"></span>
Generation	<span style="background-color: #00FF00; width: 20px; height: 15px;"></span>	Transmission	<span style="background-color: #00FF00; width: 20px; height: 15px;"></span>
Active Constraints	<span style="background-color: #00FF00; width: 20px; height: 15px;"></span>		

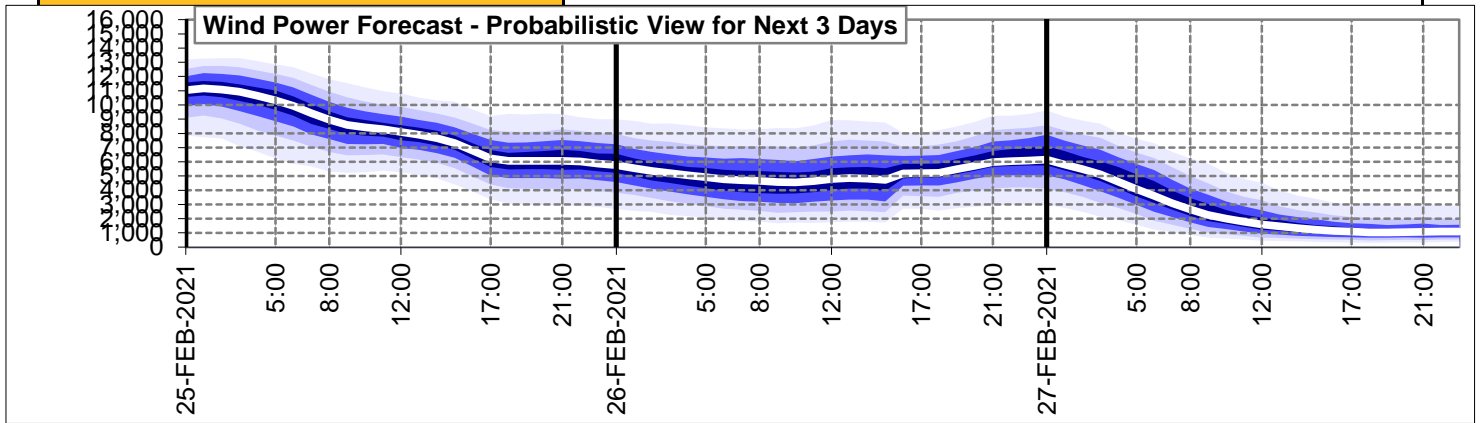
<a href="#">Today's Minimum De-Rated Margin</a>	6384 (SP 37)	
<a href="#">System Warnings</a>	None	
Current BMU Largest Loss Risk	Generation	1260 MW
	Demand	560 MW



Yesterday's Market Summary	
<a href="#">Cash out price (Max)</a>	£68.50 /MWh (SP 36,37)
<a href="#">Cash Out Price (Min)</a>	-£3.17 /MWh (SP 4)
<a href="#">Peak Demand Yesterday</a>	39,382

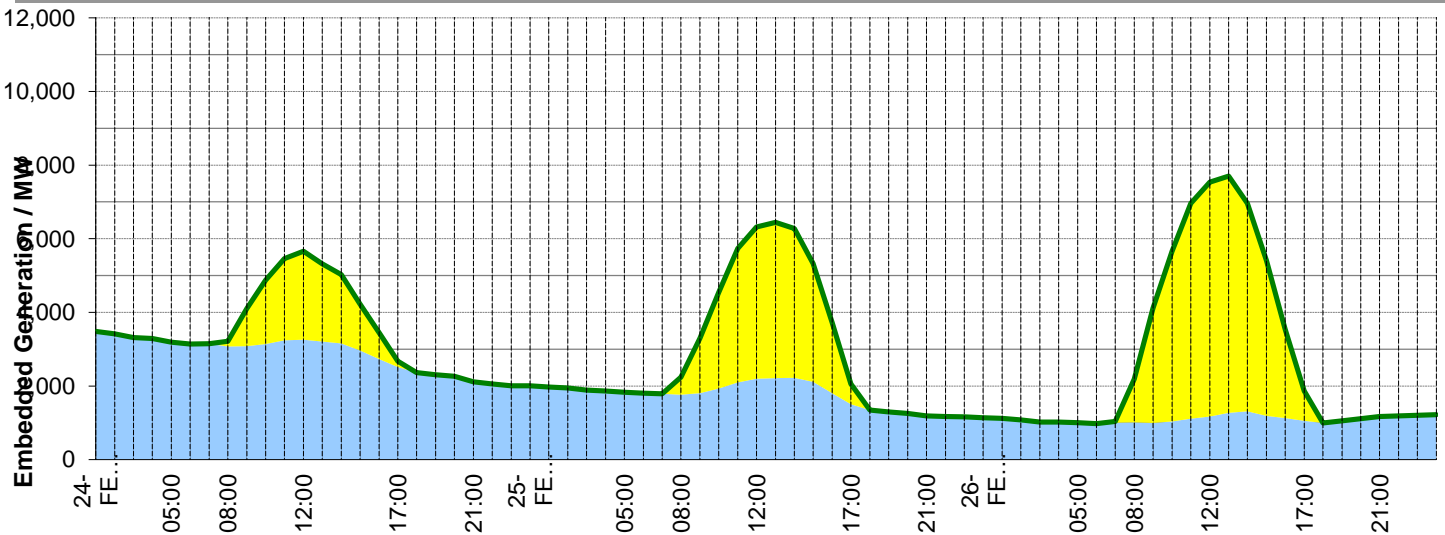
Interconnectors			
Net Transfer Capacity (MWs)			
Today	Import	Export	
Netherlands (BritNed)	0	0	Not available
France (IFA)	2000	2000	Fully available
France (IFA2)	1004	1004	Fully available
Belgium (Nemo)	1020	1020	Fully available
Ireland (EWIC)	500	530	Fully available
Northern Ireland (MOYLE)	500	500	Fully available

**Wind Power Forecast**



**Expected embedded generation (MWs)**

	24-FEB-2021					25-FEB-2021					26-FEB-2021						
	05:00	08:00	12:00	17:00	21:00	00:00	05:00	08:00	12:00	17:00	21:00	00:00	05:00	08:00	12:00	17:00	21:00
Solar (MW)	0	144	2410	158	0	0	0	477	4123	552	0	0	0	1177	6368	807	0
Wind (MW)	3194	3070	3254	2511	2115	2007	1829	1764	2194	1504	1184	1139	1007	1015	1169	1053	1167
STOR (MW)	0	0	0	0	0	0	0	0	0	0	0	0	0	0	0	0	0
<b>Total (MW)</b>	<b>3194</b>	<b>3214</b>	<b>5664</b>	<b>2669</b>	<b>2115</b>	<b>2007</b>	<b>1829</b>	<b>2241</b>	<b>6317</b>	<b>2056</b>	<b>1184</b>	<b>1139</b>	<b>1007</b>	<b>2192</b>	<b>7537</b>	<b>1860</b>	<b>1167</b>



Weather	Source	Commentary
<p>Latest forecast (Summary)</p>	<p><a href="#">Met Office</a> <a href="#">SEPA</a> <a href="#">Natural Resources Wales</a></p>	<p><b>Today:</b> Cloud and outbreaks of rain slowly clearing from southeast England. Elsewhere, dry with sunny spells for most parts, though some blustery showers affecting the northwest at times.</p> <p><b>Tonight:</b> Most places dry with skies clearing to allow a widespread frost and isolated fog patches. Cloudier and breezier conditions across northern Scotland with a little light rain.</p>
<p>General Weather Concerns e.g. wind, rain, snow, flooding, GB Weather Warnings</p>	<p><a href="#">Met Office Weather Warnings</a> <a href="#">SEPA</a> <a href="#">Natural Resources Wales</a></p>	<p><b>No weather warnings are in force for the UK</b></p> <hr/> <p><b>UK Flood Warnings:</b> 4 Flood Warnings issued for England. 14 Flood Warning issued for Scotland. 1 Flood Warnings issued for Wales.</p>

*Contains public sector information licensed under the Open Government Licence v1.0*

Further Information	
<p>BM Reports</p>	<p><a href="https://www.bmreports.com">https://www.bmreports.com</a></p>
<p>System Balancing Reports</p>	<p><a href="https://www.nationalgrideso.com/balancing-data/system-balancing-reports">https://www.nationalgrideso.com/balancing-data/system-balancing-reports</a></p>
<p>Forecast Volumes and Costs</p>	<p><a href="https://www.nationalgrideso.com/balancing-data/forecast-volumes-and-costs">https://www.nationalgrideso.com/balancing-data/forecast-volumes-and-costs</a></p>
<p>NGESO Insights</p>	<p><a href="https://www.nationalgrideso.com/insights">https://www.nationalgrideso.com/insights</a></p>