

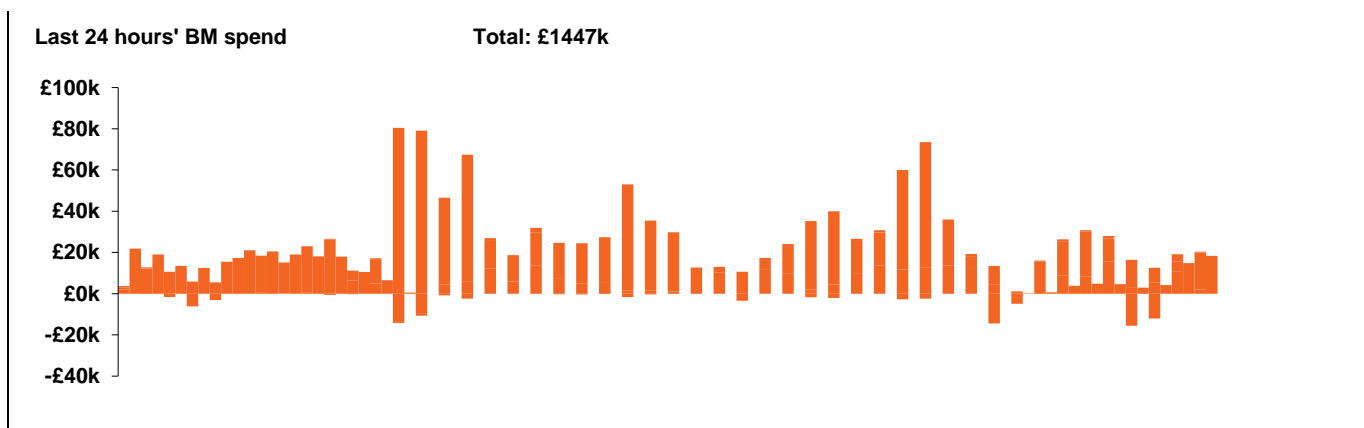
**National Electricity  
Transmission System Status Report**



**National Electricity Transmission System Status Report**  
Wednesday 27 January 2021

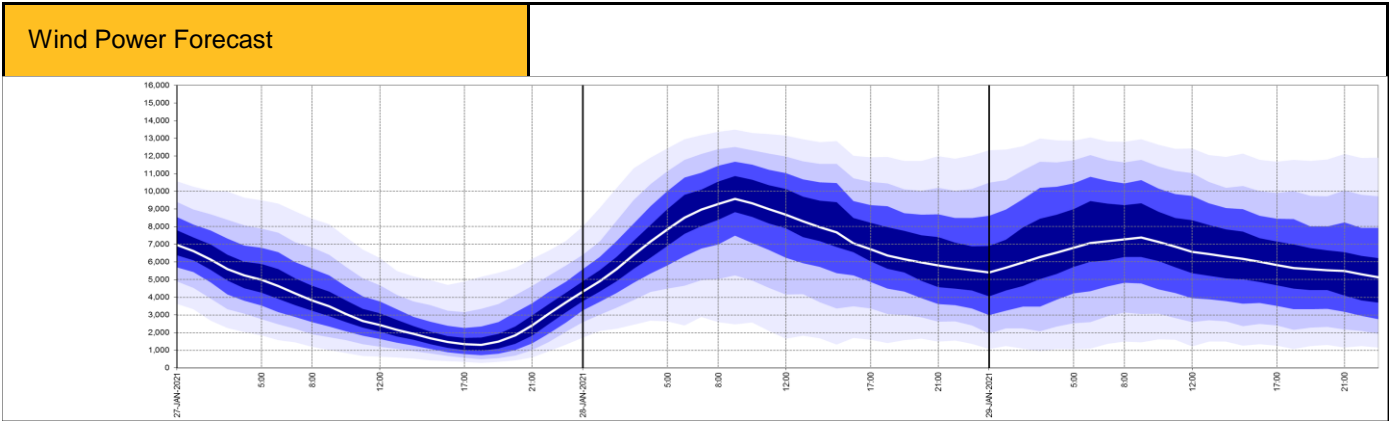
Today's High Level Risk Status Forecast for the next 24h			
General Status		Voltage	
Demand		System Inertia	
System Margins		Weather	
Generation		Transmission	
Active Constraints			

<a href="#">Today's Minimum De-Rated Margin</a>	617.87 (SP 34)	
<a href="#">System Warnings</a>	None	
Current BMU Largest Loss Risk	Generation	1260 MW
	Demand	560 MW



Yesterday's Market Summary	
<a href="#">Cash out price (Max)</a>	£110/MWh (SP 23 & 36)
<a href="#">Cash Out Price (Min)</a>	£10.10/MWh (SP 40)
<a href="#">Peak Demand Yesterday</a>	45,548 MW

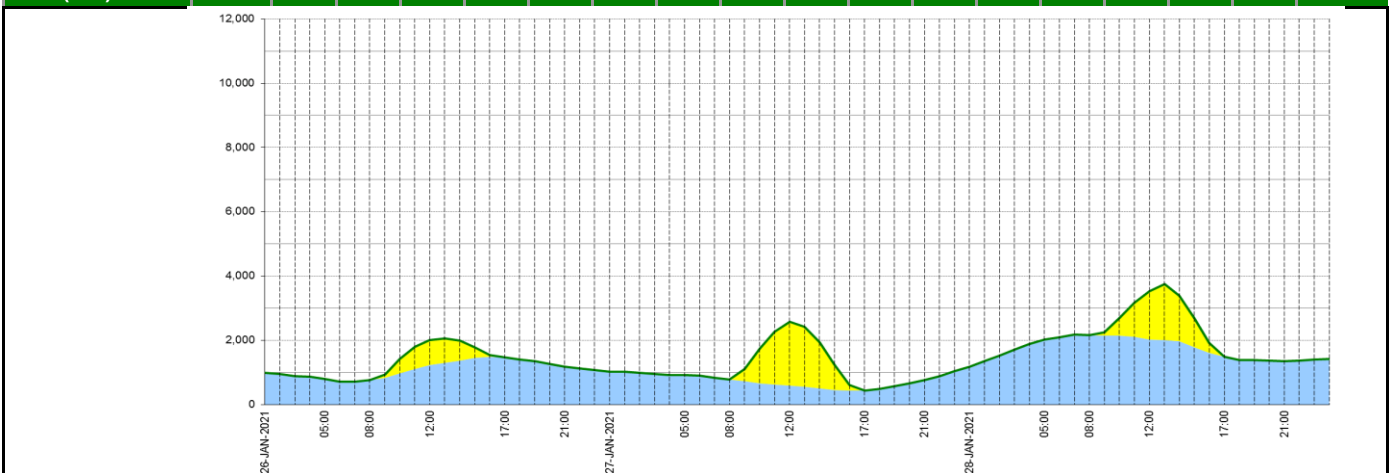
Interconnectors			
Net Transfer Capacity (MWs)			
Today	Import	Export	
Netherlands (BritNed)	0	0	Not available
France (IFA)	2000	2000	Fully available
France (IFA2)	1004	1004	Fully available
Belgium (Nemo)	1020	1020	Fully available
Ireland (EWIC)	500	530	Fully available
Northern Ireland (MOYLE)	500	500	Fully available



Key:

20% confidence  
  40% confidence  
  60% confidence  
  80% confidence  
  Mean Forecast

Expected embedded generation (MWs)																	
Embedded Generation Forecast																	
	26-JAN-2021					27-JAN-2021					28-JAN-2021						
	05:00	08:00	12:00	17:00	21:00	00:00	05:00	08:00	12:00	17:00	21:00	00:00	05:00	08:00	12:00	17:00	21:00
<b>Solar (MW)</b>	0	0	771	0	0	0	0	0	1985	0	0	0	0	0	1508	0	0
<b>Wind (MW)</b>	791	755	1228	1466	1181	1022	915	780	591	442	763	1179	2016	2167	2021	1490	1353
<b>STOR (MW)</b>	0	0	0	0	0	0	0	0	0	0	0	0	0	0	0	0	0
<b>Total (MW)</b>	<b>791</b>	<b>755</b>	<b>1999</b>	<b>1466</b>	<b>1181</b>	<b>1022</b>	<b>915</b>	<b>780</b>	<b>2576</b>	<b>442</b>	<b>763</b>	<b>1179</b>	<b>2016</b>	<b>2167</b>	<b>3529</b>	<b>1490</b>	<b>1353</b>



Weather	Source	Commentary
Latest forecast (Summary)	<a href="#">Met Office</a> <a href="#">SEPA</a> <a href="#">Natural Resources Wales</a>	<p><b>Today:</b> Mostly cloudy for many, cloud thick enough for a little patchy rain at times with more persistent and more widespread rain for Wales, southern England and parts of the Midlands and Northern Ireland later. Northern Scotland brighter and colder.</p> <p><b>Tonight:</b> Early evening rain over Wales, southern England and parts of the Midlands and Northern Ireland spreading northwards and turning to hill snow over Scotland and northern England.</p>
General Weather Concerns e.g. wind, rain, snow, flooding, GB Weather Warnings	<a href="#">Met Office Weather Warnings</a> <a href="#">SEPA</a> <a href="#">Natural Resources Wales</a>	<p><b>Weather Warnings:</b>  <b>Yellow warning of rain</b>  <b>Areas affected:</b> East Midlands   North West England   West Midlands  <b>Start:</b> 00:00 GMT on Thu 28 January <b>End:</b> 23:59 GMT on Thu 28 January            Heavy rainfall will likely lead to some minor transport disruption and flooding.            - Flooding of a few homes and businesses is likely            - Bus and train services probably affected with journey times taking longer            - Spray and flooding on roads probably making journey times longer  <b>Yellow warning of snow</b>  <b>Areas affected:</b> Central, Tayside &amp; Fife   Grampian   Highlands &amp; Eilean Siar   North East England   North West England   SW Scotland, Lothian Borders   Strathclyde   Yorkshire &amp; Humber  <b>Start:</b> 00:00 GMT on Thu 28 January <b>End:</b> 06:00 GMT on Fri 29 January            Heavy snowfall may occur across the hills in this region and bring significant disruption to travel.            - There is a small chance of travel delays on roads with some stranded vehicles and passengers, along with delayed or cancelled rail and air travel            - There is a slight chance that some rural communities could become cut off            - There is a small chance that power cuts will occur and other services, such as mobile phone coverage, may be affected</p> <p><b>UK Flood Warnings:</b>            14 Flood Warnings issued for England.            0 Flood Warning issued for Scotland.            0 Flood Warnings issued for Wales.</p>

*Contains public sector information licensed under the Open Government Licence v1.0*

Further Information	
BM Reports	<a href="https://www.bmreports.com">https://www.bmreports.com</a>
System Balancing Reports	<a href="https://www.nationalgrideso.com/balancing-data/system-balancing-reports">https://www.nationalgrideso.com/balancing-data/system-balancing-reports</a>
Forecast Volumes and Costs	<a href="https://www.nationalgrideso.com/balancing-data/forecast-volumes-and-costs">https://www.nationalgrideso.com/balancing-data/forecast-volumes-and-costs</a>
NGESO Insights	<a href="https://www.nationalgrideso.com/insights">https://www.nationalgrideso.com/insights</a>