

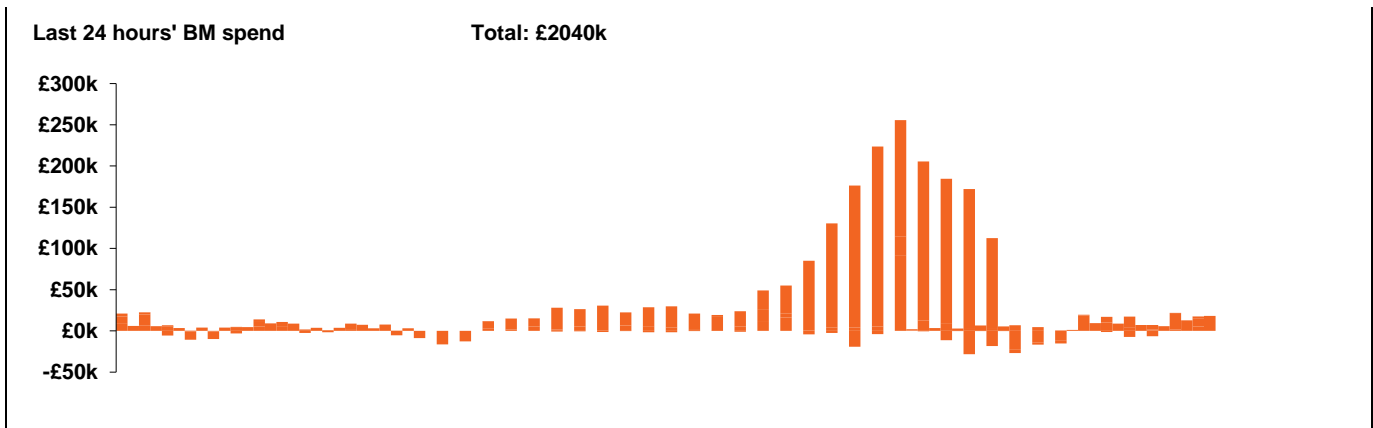
**National Electricity  
Transmission System Status Report**



**National Electricity Transmission System Status Report**  
Monday 25 January 2021

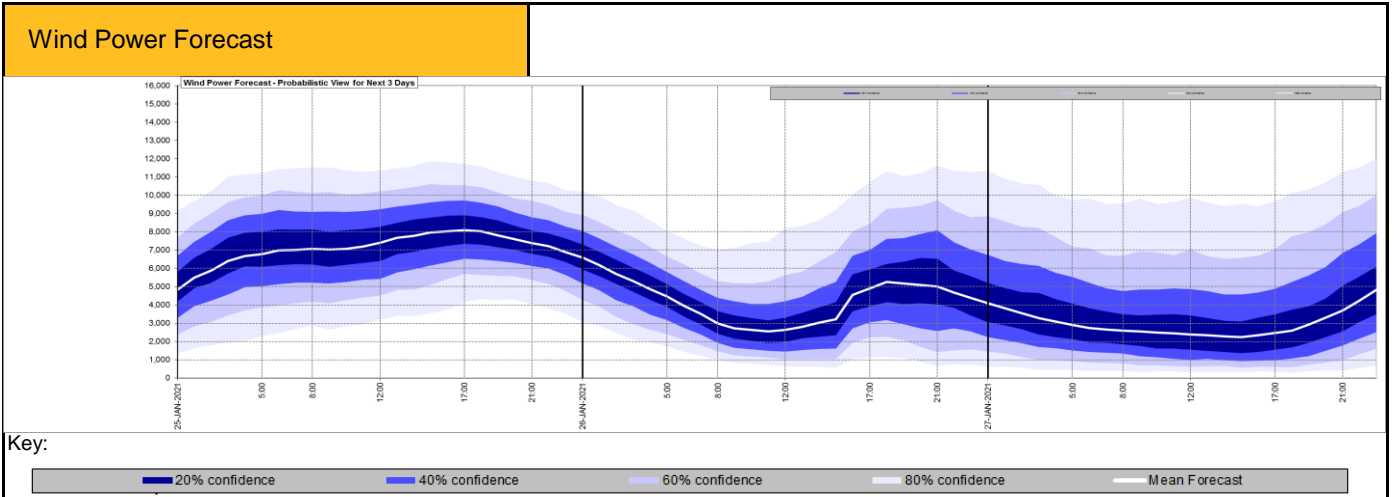
Today's High Level Risk Status Forecast for the next 24h			
General Status		Voltage	
Demand		System Inertia	
System Margins		Weather	
Generation		Transmission	
Active Constraints			

<a href="#">Today's Minimum De-Rated Margin</a>	4327.85 (SP 36)	
<a href="#">System Warnings</a>	None	
Current BMU Largest Loss Risk	Generation	1260 MW
	Demand	560 MW



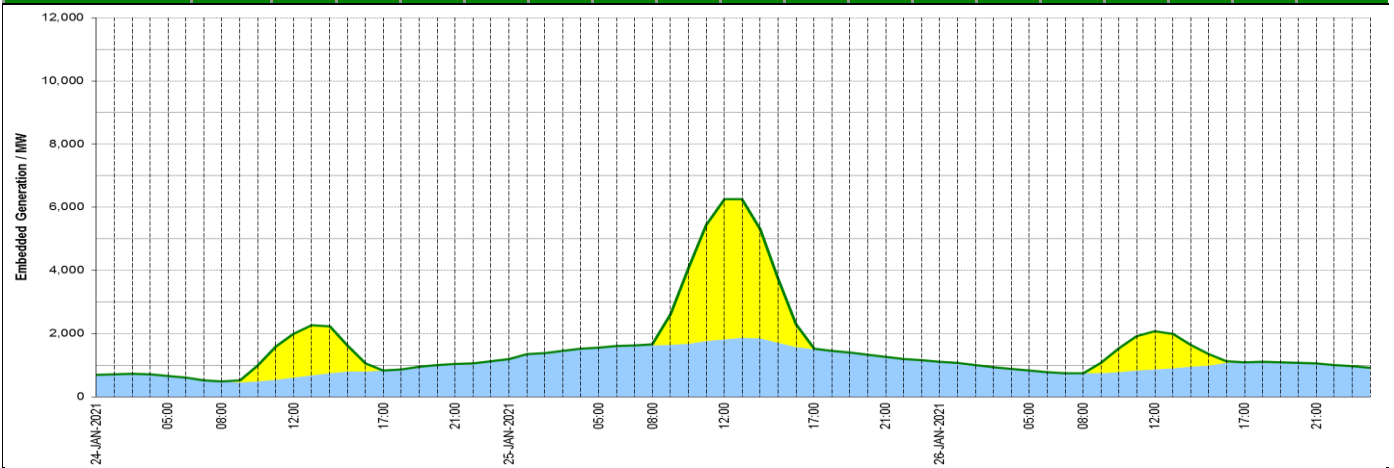
Yesterday's Market Summary	
<a href="#">Cash out price (Max)</a>	£174.61/MWh (SP 35)
<a href="#">Cash Out Price (Min)</a>	£0.00/MWh (SP 14-16)
<a href="#">Peak Demand Yesterday</a>	44,259 MW

Interconnectors			
Net Transfer Capacity (MWs)			
Today	Import	Export	
Netherlands (BritNed)	0	0	Not available
France (IFA)	2000	2000	Fully available
France (IFA2)	1004	1004	Fully available
Belgium (Nemo)	1020	1020	Fully available
Ireland (EWIC)	500	530	Fully available
Northern Ireland (MOYLE)	500	500	Fully available



### Expected embedded generation (MWs)

Embedded Generation Forecast	24-JAN-2021					25-JAN-2021					26-JAN-2021						
	05:00	08:00	12:00	17:00	21:00	00:00	05:00	08:00	12:00	17:00	21:00	00:00	05:00	08:00	12:00	17:00	21:00
<b>Solar (MW)</b>	0	0	1380	5	0	0	0	34	4432	13	0	0	0	11	1199	0	0
<b>Wind (MW)</b>	662	477	609	826	1044	1198	1552	1621	1823	1505	1261	1105	839	736	873	1087	1052
<b>STOR (MW)</b>	0	0	0	0	0	0	0	0	0	0	0	0	0	0	0	0	0
<b>Total (MW)</b>	662	477	1989	831	1044	1198	1552	1655	6255	1518	1261	1105	839	747	2072	1087	1052



Weather	Source	Commentary
Latest forecast (Summary)	<a href="#">Met Office</a> <a href="#">SEPA</a> <a href="#">Natural Resources Wales</a>	<p><b>Today:</b> A very cold start but most areas fine, dry and bright. Wintry showers continuing over north and west Scotland and perhaps Irish Sea coasts of northwest England and north Wales. Breezy for many and feeling cold.</p> <p><b>Tonight:</b> Clear and cold for many parts with widespread frost. Some rain and snow over parts of Scotland then rain and stronger winds arriving into Northern Ireland later in the night.</p>
General Weather Concerns  e.g. wind, rain, snow, flooding, GB Weather Warnings	<a href="#">Met Office Weather Warnings</a> <a href="#">SEPA</a> <a href="#">Natural Resources Wales</a>	<p><b>Weather Warnings:</b></p> <p>Yellow warning of snow            Areas affected: Central, Tayside &amp; Fife   Grampian   Highlands &amp; Eilean Siar   Orkney &amp; Shetland   SW Scotland, Lothian Borders   Strathclyde Northern Ireland, England            ACTIVE            Started at: 16:00 GMT on Sun 24 January            Ends: 11:00 GMT on Mon 25 January            Ice may cause travel disruption on Sunday night and Monday morning.            - Some injuries from slips and falls on icy surfaces            - Probably some icy patches on some untreated roads, pavements and cycle paths            - Some roads and railways likely to be affected with longer journey times by road, bus and train services</p> <p><b>UK Flood Warnings:</b></p> <p>46 Flood Warnings issued for England.</p> <p>1 Flood Warning issued for Scotland.</p> <p>2 Flood Warnings issued for Wales.</p>

*Contains public sector information licensed under the Open Government Licence v1.0*

Further Information	
BM Reports	<a href="https://www.bmreports.com">https://www.bmreports.com</a>
System Balancing Reports	<a href="https://www.nationalgrideso.com/balancing-data/system-balancing-reports">https://www.nationalgrideso.com/balancing-data/system-balancing-reports</a>
Forecast Volumes and Costs	<a href="https://www.nationalgrideso.com/balancing-data/forecast-volumes-and-costs">https://www.nationalgrideso.com/balancing-data/forecast-volumes-and-costs</a>
NGESO Insights	<a href="https://www.nationalgrideso.com/insights">https://www.nationalgrideso.com/insights</a>