

**National Electricity
Transmission System Status Report**

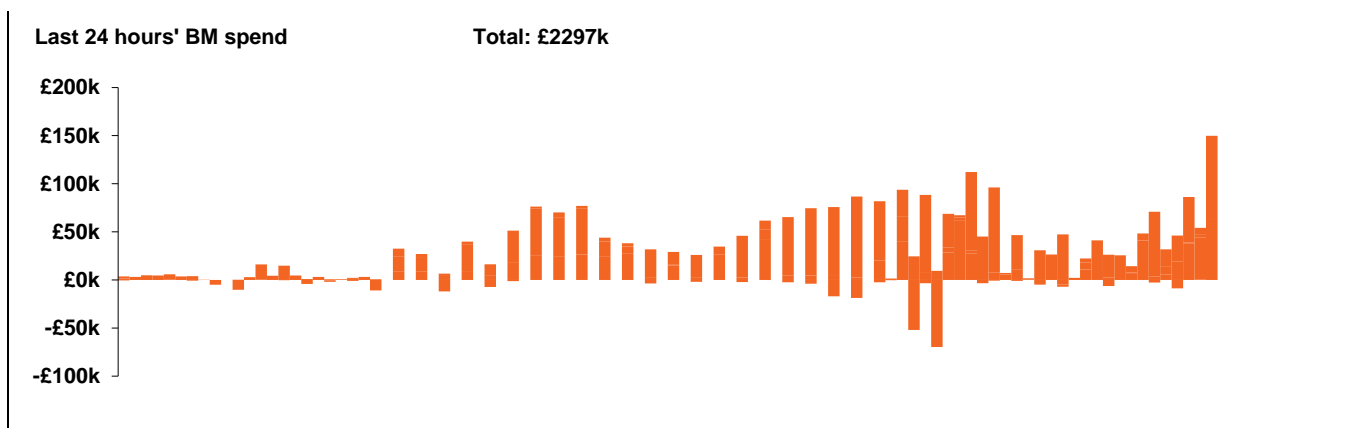


national**grid**ESO

National Electricity Transmission System Status Report
Saturday 16 January 2021

Today's High Level Risk Status Forecast for the next 24h			
General Status		Voltage	
Demand		System Inertia	
System Margins		Weather	
Generation		Transmission	
Active Constraints			

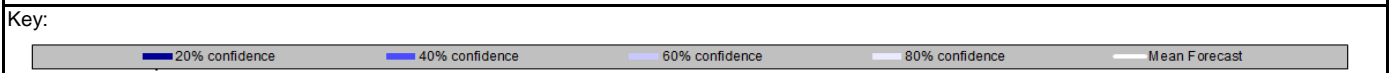
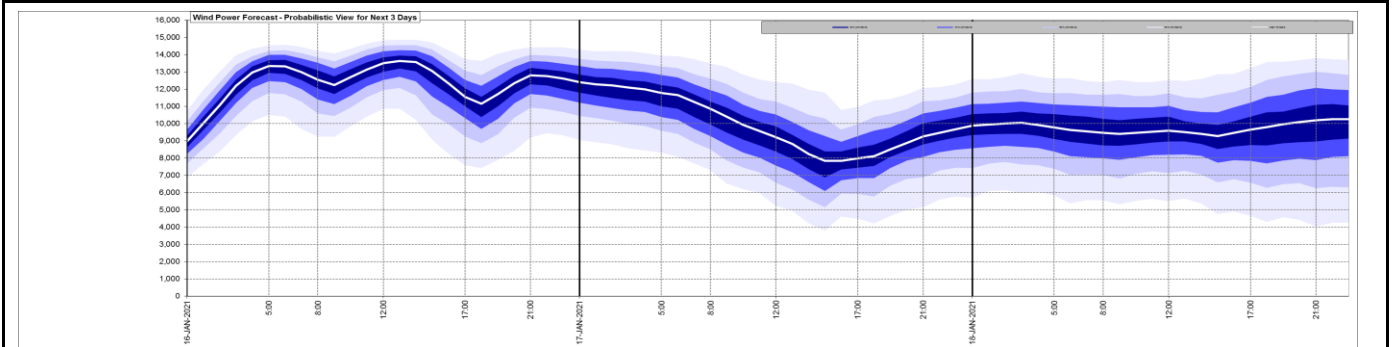
Today's Minimum De-Rated Margin	11075 (SP 37)	
System Warnings	None	
Current BMU Largest Loss Risk	Generation	1260 MW
	Demand	560 MW



Yesterday's Market Summary	
Cash out price (Max)	£170.00/MWh (SP 21)
Cash Out Price (Min)	£0.00/MWh (SP 5 & 12)
Peak Demand Yesterday	45480MW

Interconnectors Net Transfer Capacity (MWs)			
Today	Import	Export	
Netherlands (BritNed)	0	0	Not available
France (IFA)	2000	2000	Fully available
France (IFA2)	0	0	Commissioning
Belgium (Nemo)	1020	1020	Fully available
Ireland (EWIC)	500	530	Fully available
Northern Ireland (MOYLE)	500	500	Fully available

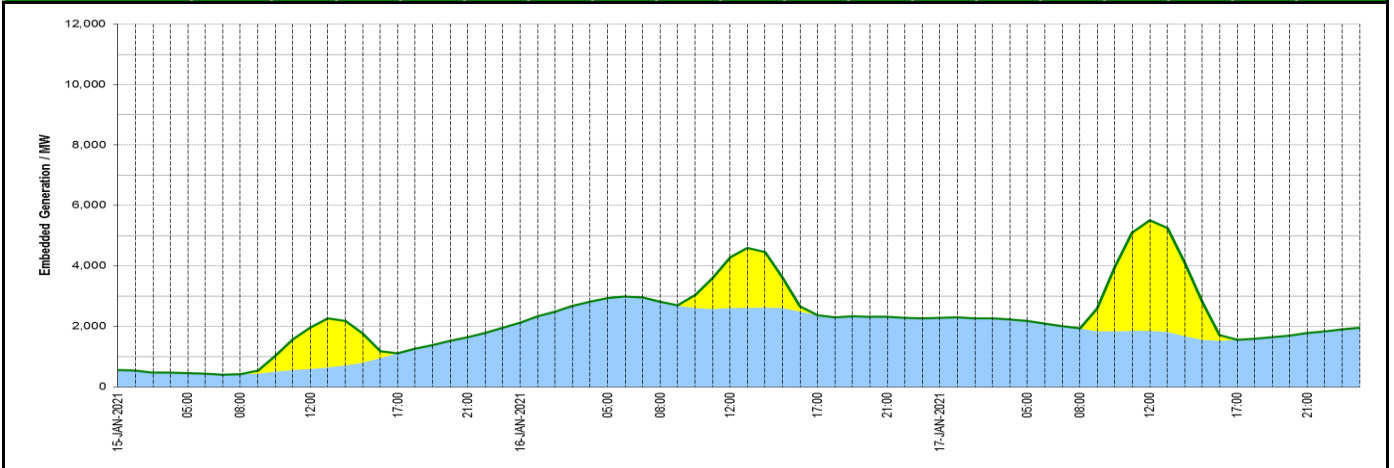
Wind Power Forecast



Expected embedded generation (MWs)

Embedded Generation Forecast

	15-JAN-2021					16-JAN-2021					17-JAN-2021						
	05:00	08:00	12:00	17:00	21:00	00:00	05:00	08:00	12:00	17:00	21:00	00:00	05:00	08:00	12:00	17:00	21:00
Solar (MW)	0	0	1360	0	0	0	0	0	1670	0	0	0	0	0	3664	0	0
Wind (MW)	452	418	588	1110	1642	2128	2945	2820	2607	2370	2322	2280	2175	1932	1845	1548	1781
STOR (MW)	0	0	0	0	0	0	0	0	0	0	0	0	0	0	0	0	0
Total (MW)	452	418	1948	1110	1642	2128	2945	2820	4277	2370	2322	2280	2175	1932	5509	1548	1781



Weather	Source	Commentary
Latest forecast (Summary)	Met Office SEPA Natural Resources Wales	<p>Today: A band of rain, preceded by some snow, will clear quickly eastwards this morning, leaving a covering of snow across East Anglia. Brighter weather following, with showers affecting northwestern parts. Windy for many, with temperatures closer to average than recently</p> <p>Tonight: Breezy with showers across northwestern and central areas. Mostly dry in the south and east with clear spells and a patchy frost.</p>
General Weather Concerns e.g. wind, rain, snow, flooding, GB Weather Warnings	Met Office Weather Warnings SEPA Natural Resources Wales	<p>Weather Warnings:</p> <ul style="list-style-type: none"> - Amber Warning for Snow in East of England - Yellow Warning for Snow in East Midlands, East of England, London & South East England - Yellow Warning for Snow & Ice in Central, Tayside & Fife, East Midlands, Grampian, Highlands & Eilean Siar, North East England, North West England, SW Scotland, Lothian Borders, Strathclyde, West Midlands, Yorkshire & Humber <p>UK Flood Warnings:</p> <p>26 Flood Warnings issued for England.</p> <p>0 Flood Warning issued for Scotland.</p> <p>0 Flood Warnings issued for Wales.</p>

Contains public sector information licensed under the Open Government Licence v1.0

Further Information	
BM Reports	https://www.bmreports.com
System Balancing Reports	https://www.nationalgrideso.com/balancing-data/system-balancing-reports
Forecast Volumes and Costs	https://www.nationalgrideso.com/balancing-data/forecast-volumes-and-costs
NGESO Insights	https://www.nationalgrideso.com/insights