

**National Electricity
Transmission System Status Report**

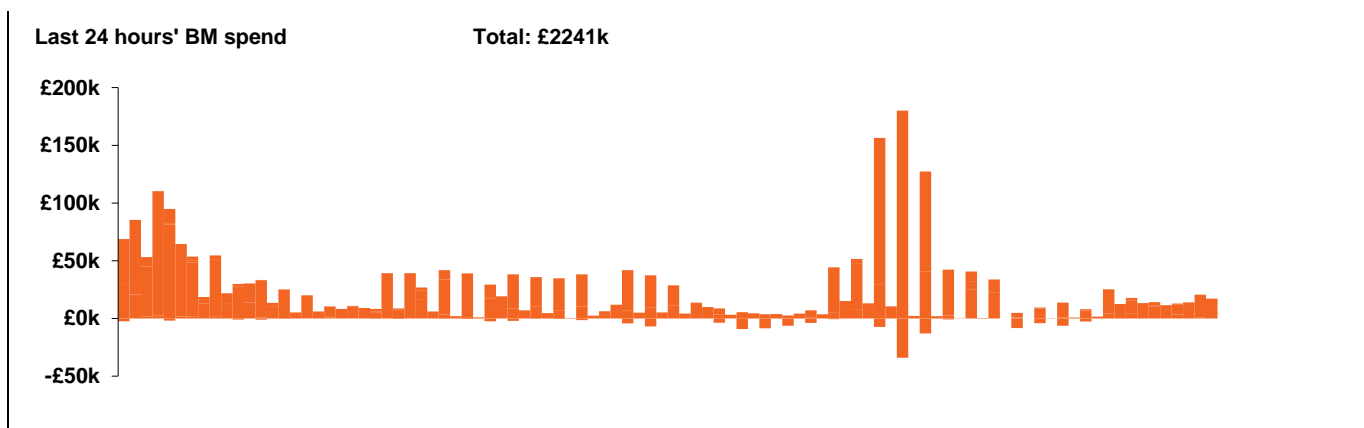


national**grid**ESO

National Electricity Transmission System Status Report
Monday 28 December 2020

| Today's High Level Risk Status Forecast for the next 24h | | | |
|--|--|----------------|--|
| General Status | | Voltage | |
| Demand | | System Inertia | |
| System Margins | | Weather | |
| Generation | | Transmission | |
| Active Constraints | | | |

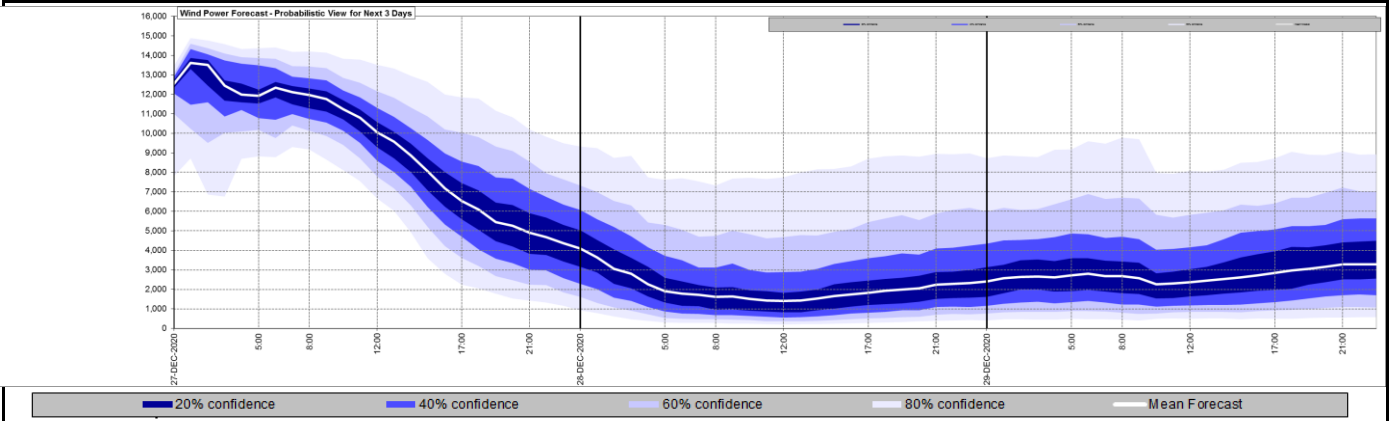
| | | |
|---|---------------|---------|
| Today's Minimum De-Rated Margin | 10214 (SP 21) | |
| System Warnings | None | |
| Current BMU Largest Loss Risk | Generation | 1260 MW |
| | Demand | 560 MW |



| Yesterday's Market Summary | |
|---------------------------------------|-------------------------|
| Cash out price (Max) | £169.95/MWh (SP 35) |
| Cash Out Price (Min) | £7.50/MWh (SP 12/13/17) |
| Peak Demand Yesterday | 38,103 MW |

| Interconnectors | | | |
|-----------------------------|--------|--------|-----------------|
| Net Transfer Capacity (MWs) | | | |
| Today | Import | Export | |
| Netherlands (BritNed) | 0 | 0 | Not available |
| France (IFA) | 2000 | 2000 | Fully available |
| France (IFA2) | 0 | 0 | Commissioning |
| Belgium (Nemo) | 1020 | 1020 | Fully Available |
| Ireland (EWIC) | 500 | 530 | Fully Available |
| Northern Ireland (MOYLE) | 500 | 500 | Fully Available |

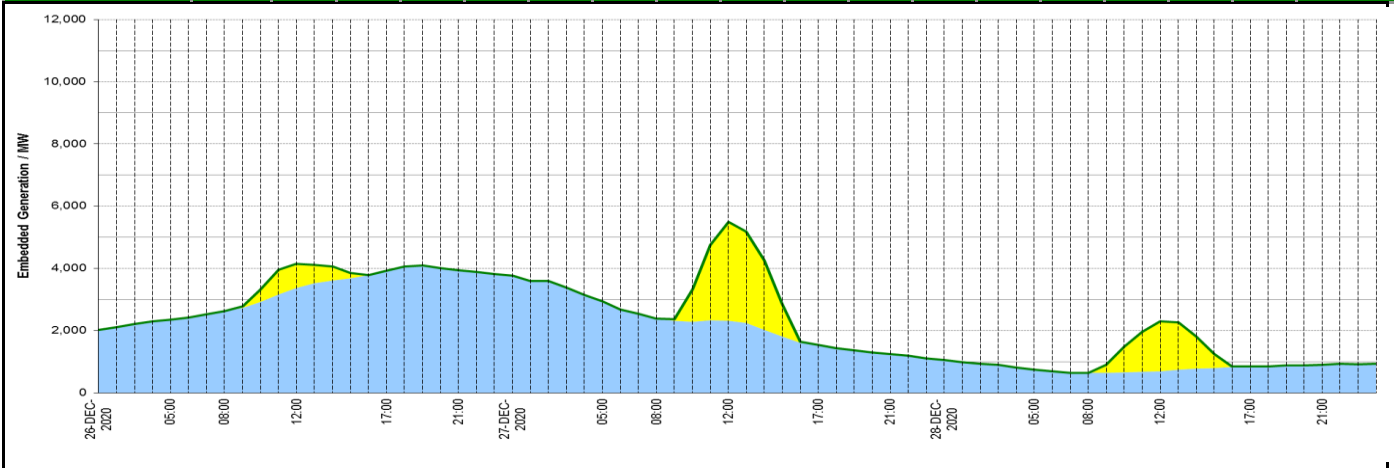
Wind Power Forecast



Expected embedded generation (MWs)

Embedded Generation Forecast

| | 26-DEC-2020 | | | | | 27-DEC-2020 | | | | | 28-DEC-2020 | | | | | | |
|-------------------|-------------|-------|-------|-------|-------|-------------|-------|-------|-------|-------|-------------|-------|-------|-------|-------|-------|-------|
| | 05:00 | 08:00 | 12:00 | 17:00 | 21:00 | 00:00 | 05:00 | 08:00 | 12:00 | 17:00 | 21:00 | 00:00 | 05:00 | 08:00 | 12:00 | 17:00 | 21:00 |
| Solar (MW) | 0 | 0 | 764 | 0 | 0 | 0 | 0 | 0 | 3170 | 0 | 0 | 0 | 0 | 0 | 1605 | 0 | 0 |
| Wind (MW) | 2353 | 2620 | 3374 | 3928 | 3937 | 3765 | 2938 | 2381 | 2321 | 1536 | 1242 | 1048 | 749 | 636 | 699 | 845 | 901 |
| STOR (MW) | 0 | 0 | 0 | 0 | 0 | 0 | 0 | 0 | 0 | 0 | 0 | 0 | 0 | 0 | 0 | 0 | 0 |
| Total (MW) | 2353 | 2620 | 4138 | 3928 | 3937 | 3765 | 2938 | 2381 | 5491 | 1536 | 1242 | 1048 | 749 | 636 | 2304 | 845 | 901 |



| Weather | Source | Commentary |
|---|--|--|
| Latest forecast (Summary) | Met Office SEPA Natural Resources Wales | <p>Today: Showers affecting some exposed coastal areas throughout, with northerly gales affecting western fringes. A few areas of thicker cloud with rain, sleet or snow, perhaps giving a covering in places. Cold, after overnight frost and ice in places.</p> <p>Tonight: Still some coastal showers, and one or two areas of more persistent rain, sleet and snow drifting inland. However many inland areas clearer and frosty, a sharp frost in places.</p> |
| General Weather Concerns e.g. wind, rain, snow, flooding, GB Weather Warnings | Met Office Weather Warnings SEPA Natural Resources Wales | <p>Weather Warnings: Yellow warning of snow Areas affected: Central, Tayside & Fife East Midlands Grampian Highlands & Eilean Siar North East England North West England Northern Ireland SW Scotland, Lothian Borders Strathclyde Wales Yorkshire & Humber</p> <p>ACTIVE Started at: 15:00 GMT on Sun 27 December Ends: 10:00 GMT on Mon 28 December An area of rain, sleet and snow will move south through Sunday night with the potential for icy surfaces and some travel disruption.</p> <p>Yellow warning of ice Areas affected: Central, Tayside & Fife East Midlands Grampian Highlands & Eilean Siar North East England North West England Northern Ireland SW Scotland, Lothian Borders Strathclyde Wales Yorkshire & Humber</p> <p>ACTIVE Started at: 15:00 GMT on Sun 27 December Ends: 10:00 GMT on Mon 28 December An area of rain, sleet and snow will move south through Sunday night with the potential for icy surfaces and some travel disruption.</p> <p>Yellow warning of snow Areas affected: East Midlands East of England London & South East England North West England South West England Wales West Midlands</p> <p>ACTIVE Started at: 00:00 GMT on Mon 28 December Ends: 18:00 GMT on Mon 28 December Rain may turn to snow, which along with widespread ice, will lead to the potential for some disruption to travel and utilities.</p> <p>Yellow warning of ice Areas affected: East Midlands East of England London & South East England North West England South West England Wales West Midlands</p> <p>ACTIVE Started at: 00:00 GMT on Mon 28 December Ends: 18:00 GMT on Mon 28 December Rain may turn to snow, which along with widespread ice, will lead to the potential for some disruption to travel and utilities.</p> <p>UK Flood Warnings: 103 Flood Warnings issued for England 0 Flood Warnings issued for Scotland 2 Flood Warnings issued for Wales</p> |

Contains public sector information licensed under the Open Government Licence v1.0

| Further Information | |
|----------------------------|---|
| BM Reports | https://www.bmreports.com |
| System Balancing Reports | https://www.nationalgrideso.com/balancing-data/system-balancing-reports |
| Forecast Volumes and Costs | https://www.nationalgrideso.com/balancing-data/forecast-volumes-and-costs |
| NGESO Insights | https://www.nationalgrideso.com/insights |