

**National Electricity  
Transmission System Status Report**

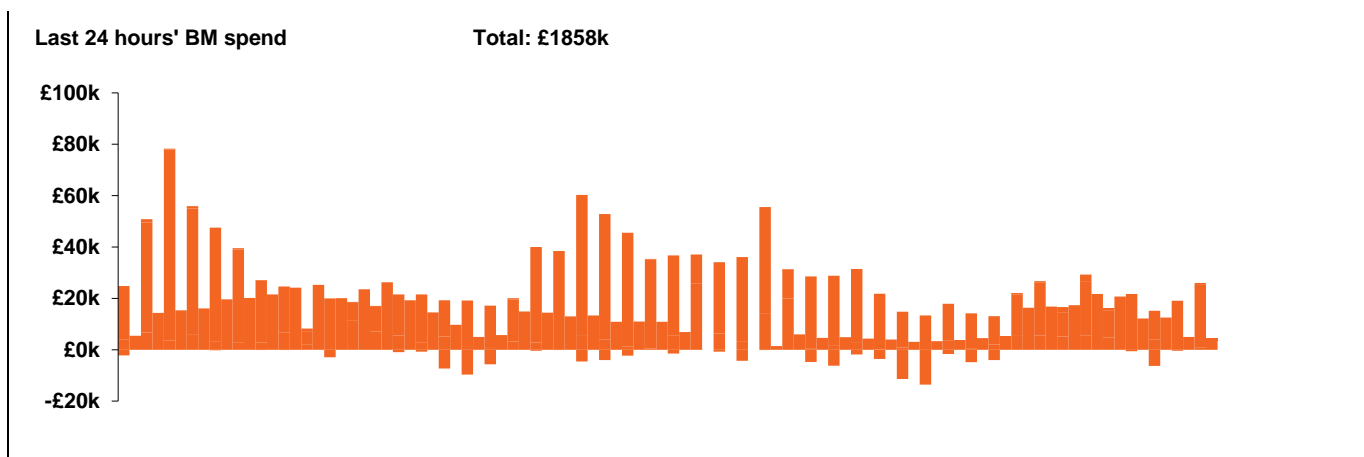


national**grid**ESO

**National Electricity Transmission System Status Report**  
Thursday 24 December 2020

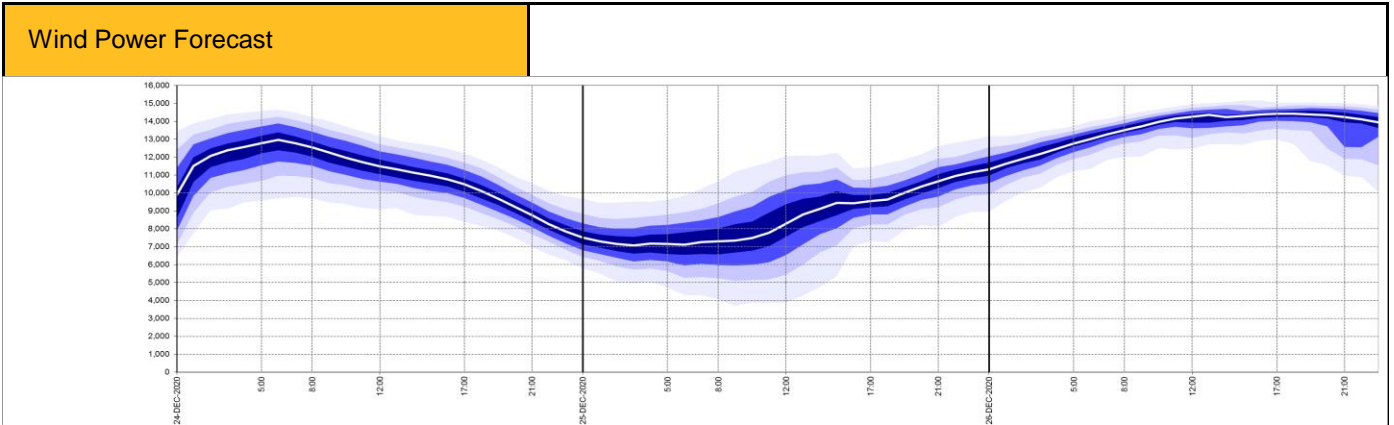
Today's High Level Risk Status Forecast for the next 24h			
General Status		Voltage	
Demand		System Inertia	
System Margins		Weather	
Generation		Transmission	
Active Constraints			

<a href="#">Today's Minimum De-Rated Margin</a>	13425 (SP 35)	
<a href="#">System Warnings</a>	None	
Current BMU Largest Loss Risk	Generation	1260 MW
	Demand	560 MW



Yesterday's Market Summary	
<a href="#">Cash out price (Max)</a>	£78/MWh (SP 23 & 25)
<a href="#">Cash Out Price (Min)</a>	21/MWh (SP 13)
<a href="#">Peak Demand Yesterday</a>	39,411 MW

Interconnectors Net Transfer Capacity (MWs)			
Today	Import	Export	
Netherlands (BritNed)	0	0	Not available
France (IFA)	2000	2000	Fully available
France (IFA2)	0	0	Commissioning
Belgium (Nemo)	1020	1020	Fully Available
Ireland (EWIC)	500	530	Fully Available
Northern Ireland (MOYLE)	500	500	Fully Available

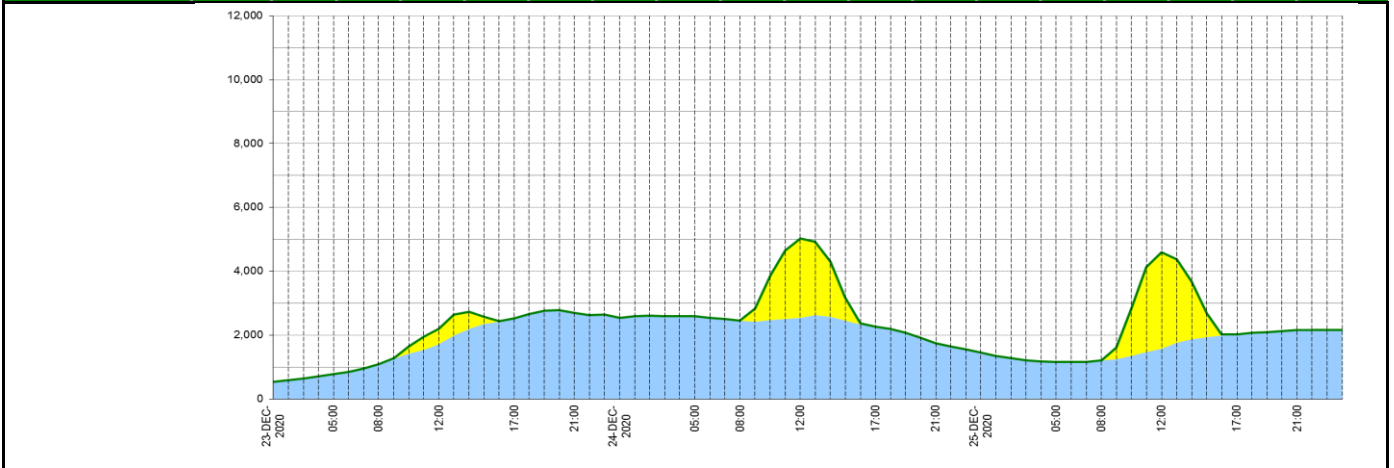


Key:

20% confidence    
  40% confidence    
  60% confidence    
  80% confidence    
  Mean Forecast

### Expected embedded generation (MWs)

Embedded Generation Forecast	23-DEC-2020					24-DEC-2020					25-DEC-2020						
	05:00	08:00	12:00	17:00	21:00	00:00	05:00	08:00	12:00	17:00	21:00	00:00	05:00	08:00	12:00	17:00	21:00
Solar (MW)	0	0	484	0	0	0	0	0	2475	0	0	0	0	0	3016	0	0
Wind (MW)	772	1097	1719	2527	2694	2536	2584	2454	2546	2266	1746	1452	1159	1205	1579	2030	2154
STOR (MW)	0	0	0	0	0	0	0	0	0	0	0	0	0	0	0	0	0
<b>Total (MW)</b>	<b>772</b>	<b>1097</b>	<b>2203</b>	<b>2527</b>	<b>2694</b>	<b>2536</b>	<b>2584</b>	<b>2454</b>	<b>5021</b>	<b>2266</b>	<b>1746</b>	<b>1452</b>	<b>1159</b>	<b>1205</b>	<b>4595</b>	<b>2030</b>	<b>2154</b>



Weather	Source	Commentary
Latest forecast (Summary)	<a href="#">Met Office</a> <a href="#">SEPA</a> <a href="#">Natural Resources Wales</a>	<p><b>Today:</b> Showers will affect parts of Northern Ireland, Wales, southwest and eastern England and northern Scotland. The heaviest showers will be over eastern England and over hills in the north showers will be wintry. Fine elsewhere. Windy and feeling cold.</p> <p><b>Tonight:</b> Most areas cold and frosty with clear periods. Showers will continue to affect parts of eastern England, showers wintry on hills. Also a few showers over Cornwall and west Wales.</p>
General Weather Concerns  e.g. wind, rain, snow, flooding, GB Weather Warnings	<a href="#">Met Office Weather Warnings</a> <a href="#">SEPA</a> <a href="#">Natural Resources Wales</a>	<p><b>Weather Warnings:</b></p> <p><b>Yellow warnings of snow &amp; ice</b> Areas affected: Central, Tayside &amp; Fife   Grampian   Highlands &amp; Eilean Siar   Orkney &amp; Shetland 21:00 GMT on Wed 23 Dec to 11:00 GMT on Thu 24 Dec Wintry showers will give a risk of icy patches and snow overnight and into Christmas Eve, giving some difficult driving conditions.</p> <ul style="list-style-type: none"> <li>- Some roads and railways likely to be affected with longer journey times by road, bus and train services</li> <li>- Some injuries from slips and falls on icy surfaces</li> <li>- Probably some icy patches on some untreated roads, pavements and cycle paths</li> </ul> <p><b>Yellow warning of wind</b> Areas affected: East Midlands   East of England   London &amp; SE England   NE England   NW England   SW Scotland, Lothian Borders   SW England   Wales   West Midlands   Yorkshire &amp; Humber 15:00 GMT on Sat 26th Dec to 12:00 GMT on Sun 27 Dec Very windy weather is expected for parts of England, Wales and the far south of Scotland, leading to disruption to transport and utilities.</p> <ul style="list-style-type: none"> <li>- Road, rail, air and ferry services may be affected, with longer journey times and cancellations possible</li> <li>- Some roads and bridges may close</li> <li>- Power cuts may occur, with the potential to affect other services, such as mobile phone coverage</li> <li>- Injuries and danger to life could occur from large waves and beach material being thrown onto sea fronts, coastal roads and properties</li> <li>- Some damage to buildings, such as tiles blown from roofs, could happen</li> </ul> <p><b>UK Flood Warnings:</b></p> <p>93 Flood Warnings issued for England</p> <p>0 Flood Warnings issued for Scotland</p> <p>9 Flood Warnings issued for Wales</p>

*Contains public sector information licensed under the Open Government Licence v1.0*

Further Information	
BM Reports	<a href="https://www.bmreports.com">https://www.bmreports.com</a>
System Balancing Reports	<a href="https://www.nationalgrideso.com/balancing-data/system-balancing-reports">https://www.nationalgrideso.com/balancing-data/system-balancing-reports</a>
Forecast Volumes and Costs	<a href="https://www.nationalgrideso.com/balancing-data/forecast-volumes-and-costs">https://www.nationalgrideso.com/balancing-data/forecast-volumes-and-costs</a>
NGESO Insights	<a href="https://www.nationalgrideso.com/insights">https://www.nationalgrideso.com/insights</a>