

**National Electricity
Transmission System Status Report**

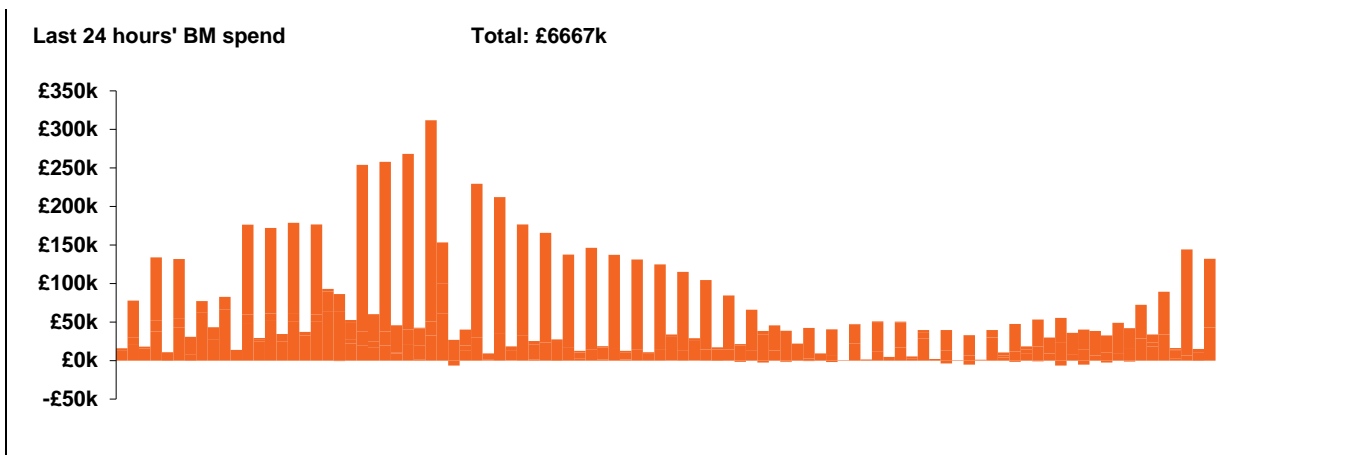


nationalgridESO

National Electricity Transmission System Status Report
Tuesday 17 November 2020

| Today's High Level Risk Status Forecast for the next 24h | | | |
|--|--|----------------|--|
| General Status | | Voltage | |
| Demand | | System Inertia | |
| System Margins | | Weather | |
| Generation | | Transmission | |
| Active Constraints | | | |

| | | |
|---|-----------------|----------------------------|
| Today's Minimum De-Rated Margin | 8846.19 (SP 35) | |
| System Warnings | None | |
| Current BMU Largest Loss Risk | Generation | 1260 MW |
| | Demand | 560 MW (1120 MW overnight) |

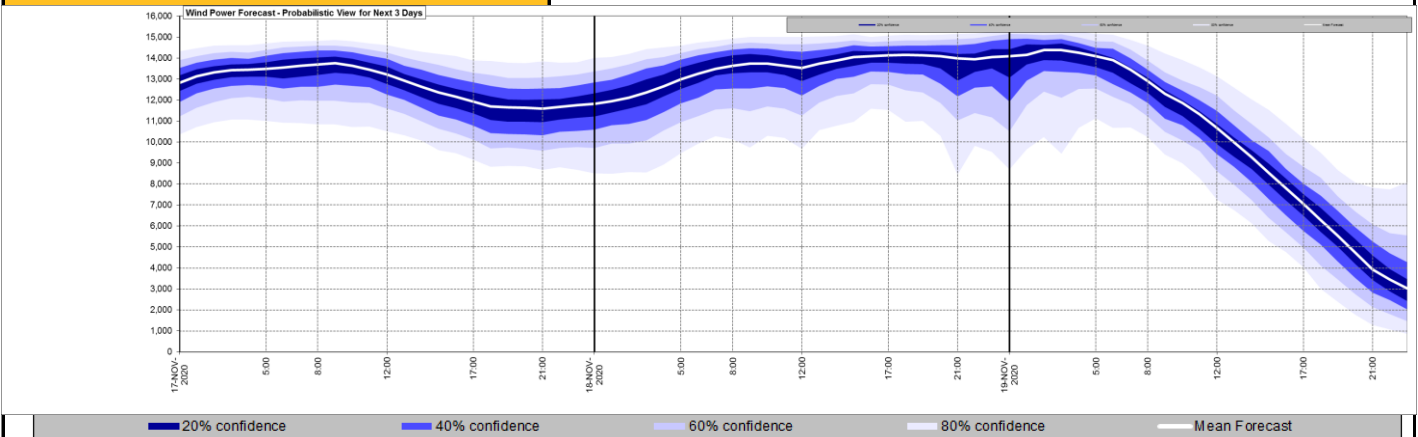


| Yesterday's Market Summary | |
|---------------------------------------|---------------------|
| Cash out price (Max) | £69.50/MWh (SP 32) |
| Cash Out Price (Min) | £-69.93/MWh (SP 10) |
| Peak Demand Yesterday | 41,170 MW |

Interconnectors Net Transfer Capacity (MWs)

| Today | Import | Export | |
|--------------------------|--------|--------|-----------------|
| Netherlands (BritNed) | 1100 | 1133 | Fully available |
| France (IFA) | 2000 | 2000 | Fully available |
| France (IFA2) | 100 | 100 | Commissioning |
| Belgium (Nemo) | 1020 | 1020 | Fully Available |
| Ireland (EWIC) | 500 | 530 | Fully Available |
| Northern Ireland (MOYLE) | 500 | 500 | Fully Available |

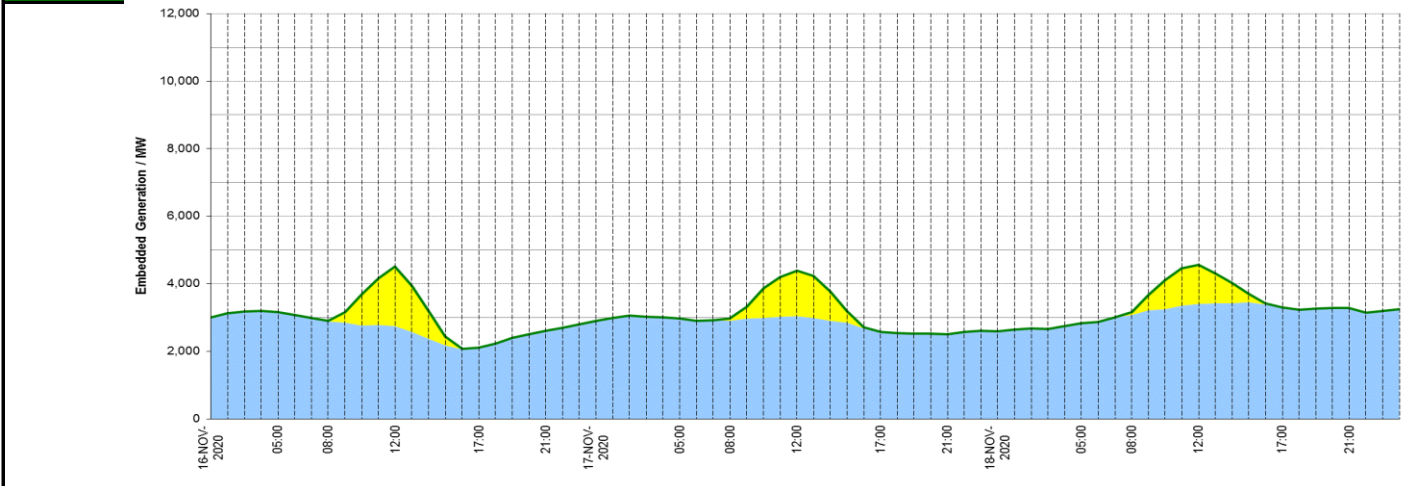
Wind Power Forecast



Expected embedded generation (MWs)

Embedded Generation Forecast

| | 16-NOV-2020 | | | | | 17-NOV-2020 | | | | | 18-NOV-2020 | | | | | | |
|-------------------|-------------|-------------|-------------|-------------|-------------|-------------|-------------|-------------|-------------|-------------|-------------|-------------|-------------|-------------|-------------|-------------|-------------|
| | 05:00 | 08:00 | 12:00 | 17:00 | 21:00 | 00:00 | 05:00 | 08:00 | 12:00 | 17:00 | 21:00 | 00:00 | 05:00 | 08:00 | 12:00 | 17:00 | 21:00 |
| Solar (MW) | 0 | 28 | 1750 | 0 | 0 | 0 | 0 | 61 | 1352 | 0 | 0 | 0 | 0 | 89 | 1151 | 0 | 0 |
| Wind (MW) | 3157 | 2878 | 2751 | 2105 | 2615 | 2896 | 2965 | 2904 | 3033 | 2583 | 2513 | 2593 | 2836 | 3081 | 3410 | 3297 | 3276 |
| STOR (MW) | 0 | 0 | 0 | 0 | 0 | 0 | 0 | 0 | 0 | 0 | 0 | 0 | 0 | 0 | 0 | 0 | 0 |
| Total (MW) | 3157 | 2906 | 4501 | 2105 | 2615 | 2896 | 2965 | 2965 | 4385 | 2583 | 2513 | 2593 | 2836 | 3170 | 4561 | 3297 | 3276 |



| Weather | Source | Commentary |
|--|--|---|
| Latest forecast (Summary) | Met Office SEPA Natural Resources Wales | <p>Today: Very mild, windy and mostly cloudy, though probably a few breaks in the east. Mostly dry for many, but some rain at times in the west, mainly over hills and especially over northwest Scotland where persistent, heavy rain is expected.</p> <p>Tonight: Mild, windy and mostly cloudy. Mostly dry in the east, but further heavy rain over northwest Scotland whilst elsewhere in the west rain turns more widespread later in the night.</p> |
| General Weather Concerns e.g. wind, rain, snow, flooding, GB Weather Warnings | Met Office Weather Warnings SEPA Natural Resources Wales | <p>UK Weather Warnings: Yellow warning of rain Areas affected: Central, Tayside & Fife Highlands & Eilean Siar Strathclyde</p> |
| | | <p>UK Flood Warnings:</p> <p>9 Flood Warnings are in force in England</p> <p>4 Flood Warnings are in force in Scotland.</p> <p>0 Flood Warnings are in force in Wales.</p> |

Contains public sector information licensed under the Open Government Licence v1.0

| Further Information | |
|----------------------------|---|
| BM Reports | https://www.bmreports.com |
| System Balancing Reports | https://www.nationalgrideso.com/balancing-data/system-balancing-reports |
| Forecast Volumes and Costs | https://www.nationalgrideso.com/balancing-data/forecast-volumes-and-costs |
| NGESO Insights | https://www.nationalgrideso.com/insights |