

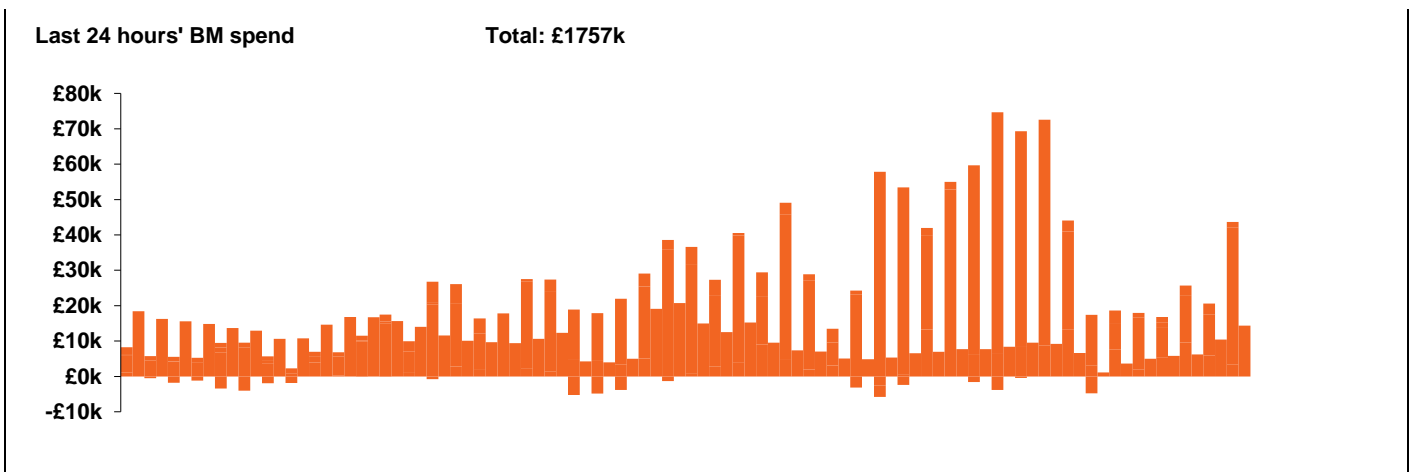
**National Electricity  
Transmission System Status Report**



**National Electricity Transmission System Status Report**  
Friday 25 September 2020

Today's High Level Risk Status Forecast for the next 24h			
General Status		Voltage	
Demand		System Inertia	
System Margins		Weather	
Generation		Transmission	
Active Constraints			

<a href="#">Today's Minimum De-Rated Margin</a>	10451 (SP 41)	
<a href="#">System Warnings</a>	None	
Current BMU Largest Loss Risk	Generation	1000 MW
	Demand	560 MW

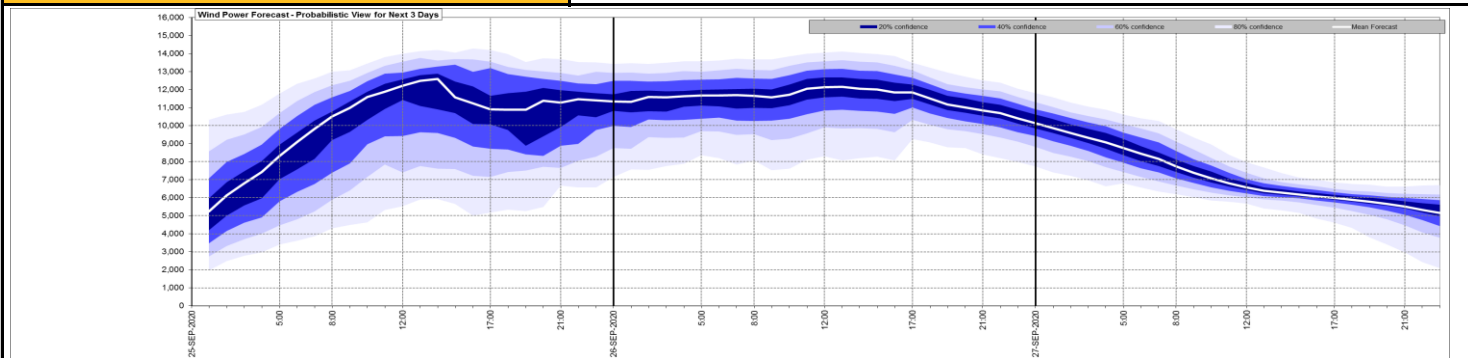


Yesterday's Market Summary	
<a href="#">Cash out price (Max)</a>	£88.00 (SP 39)
<a href="#">Cash Out Price (Min)</a>	£10.39 (SP 7-8)
<a href="#">Peak Demand Yesterday</a>	35277 MW

**Interconnectors**  
**Net Transfer Capacity (MWs)**

Today	Import	Export	
Netherlands (BritNed)	0	0	Planned Outage (Returned to Service at 22:00)
France (IFA)	2000	2000	Fully available
Belgium (Nemo)	1013	1013	Fully available
Ireland (EWIC)	530	530	Fully available
Northern Ireland (MOYLE)	500	500	Fully available

**Wind Power Forecast**

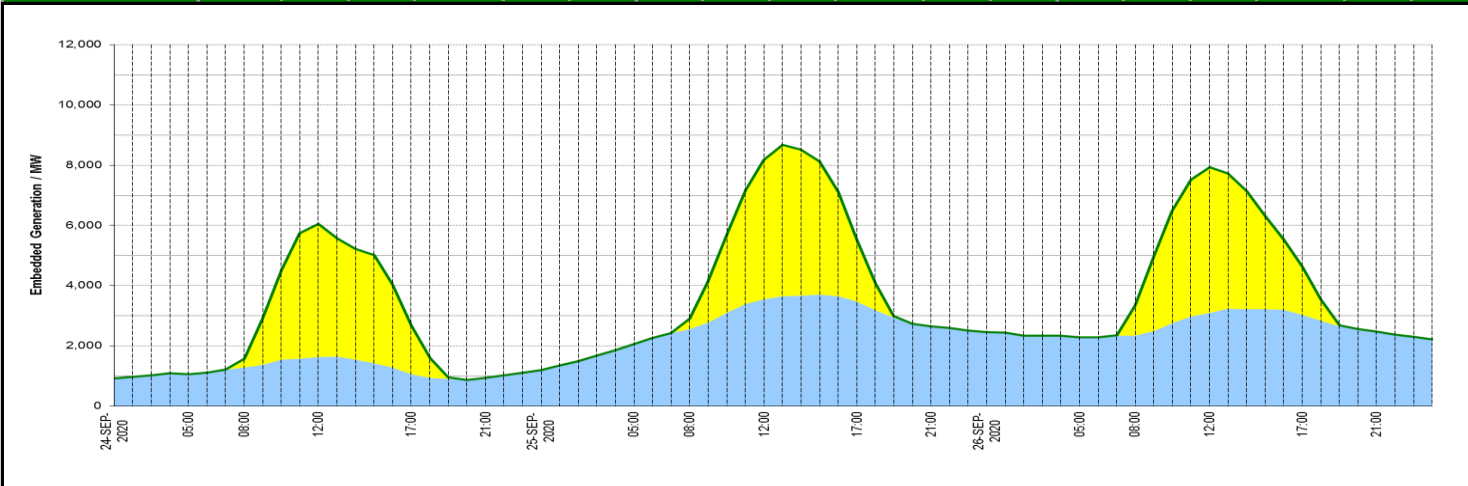


Key:

**Expected embedded generation (MWs)**

**Embedded Generation Forecast**

	24-SEP-2020					25-SEP-2020					26-SEP-2020						
	05:00	08:00	12:00	17:00	21:00	00:00	05:00	08:00	12:00	17:00	21:00	00:00	05:00	08:00	12:00	17:00	21:00
<b>Solar (MW)</b>	0	305	4410	1630	0	0	0	343	4621	2071	0	0	0	1000	4829	1600	0
<b>Wind (MW)</b>	1054	1277	1634	1056	931	1203	2059	2559	3545	3471	2644	2464	2289	2336	3104	3021	2468
<b>STOR (MW)</b>	0	0	0	0	0	0	0	0	0	0	0	0	0	0	0	0	0
<b>Total (MW)</b>	<b>1054</b>	<b>1582</b>	<b>6044</b>	<b>2686</b>	<b>931</b>	<b>1203</b>	<b>2059</b>	<b>2902</b>	<b>8166</b>	<b>5542</b>	<b>2644</b>	<b>2464</b>	<b>2289</b>	<b>3336</b>	<b>7933</b>	<b>4621</b>	<b>2468</b>



Weather	Source	Commentary
Latest forecast (Summary)	<a href="#">Met Office</a> <a href="#">SEPA</a> <a href="#">Natural Resources Wales</a>	<b>Today:</b> Dull and with spells of rain, heavy at times, across the far east of England, especially East Anglia. Brighter elsewhere, but also some showers, mainly in the north and west. Chilly and windy, especially in the far east.
		<b>Tonight:</b> Daytime rain over eastern England tending to fade whilst elsewhere early evening showers slowly die out leaving clear spells. Staying windy, especially in the east, and a chilly night
General Weather Concerns  e.g. wind, rain, snow, flooding, GB Weather Warnings	<a href="#">Met Office Weather Warnings</a>  <a href="#">SEPA</a> <a href="#">Natural Resources Wales</a>	<b>Weather Warnings:</b>  Yellow - Rain East Midlands, East of England Wind East of England <span style="float: right;">Yellow -</span>
<b>Further Information</b>		
BM Reports	<a href="https://www.bmreports.com">https://www.bmreports.com</a>	
System Balancing Reports	<a href="https://www.nationalgrideso.com/balancing-data/system-balancing-reports">https://www.nationalgrideso.com/balancing-data/system-balancing-reports</a>	
Forecast Volumes and Costs	<a href="https://www.nationalgrideso.com/balancing-data/forecast-volumes-and-costs">https://www.nationalgrideso.com/balancing-data/forecast-volumes-and-costs</a>	
NGESO Insights	<a href="https://www.nationalgrideso.com/insights">https://www.nationalgrideso.com/insights</a>	
<b>Flood Warnings:</b>  No flood warnings are currently in force in England.  No flood warnings are currently in force in Scotland  No flood warnings are currently in force in Wales		