

**National Electricity
Transmission System Status Report**

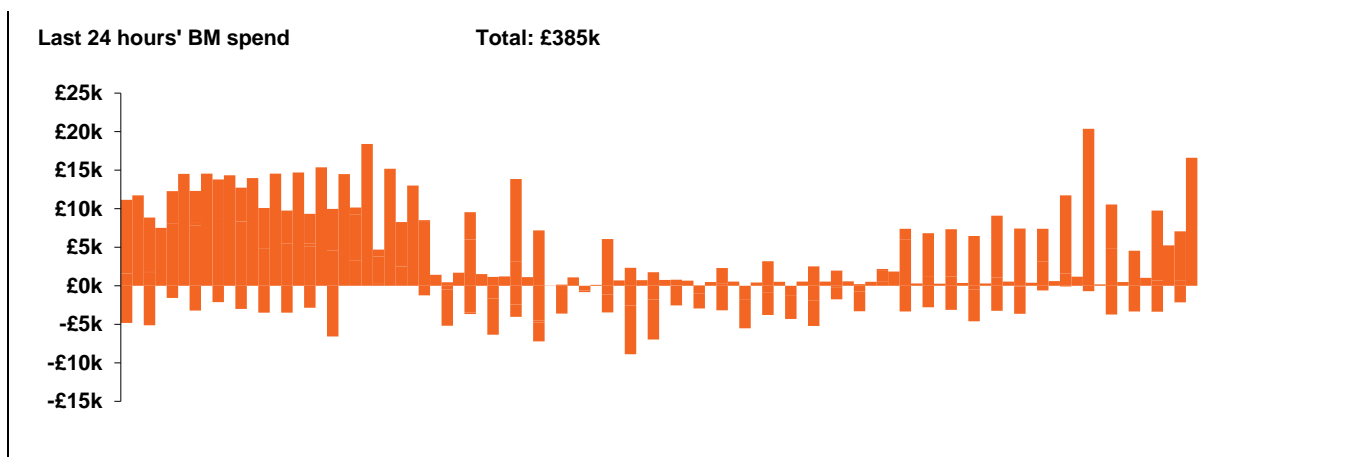


national**grid**ESO

National Electricity Transmission System Status Report
Tuesday 25 August 2020

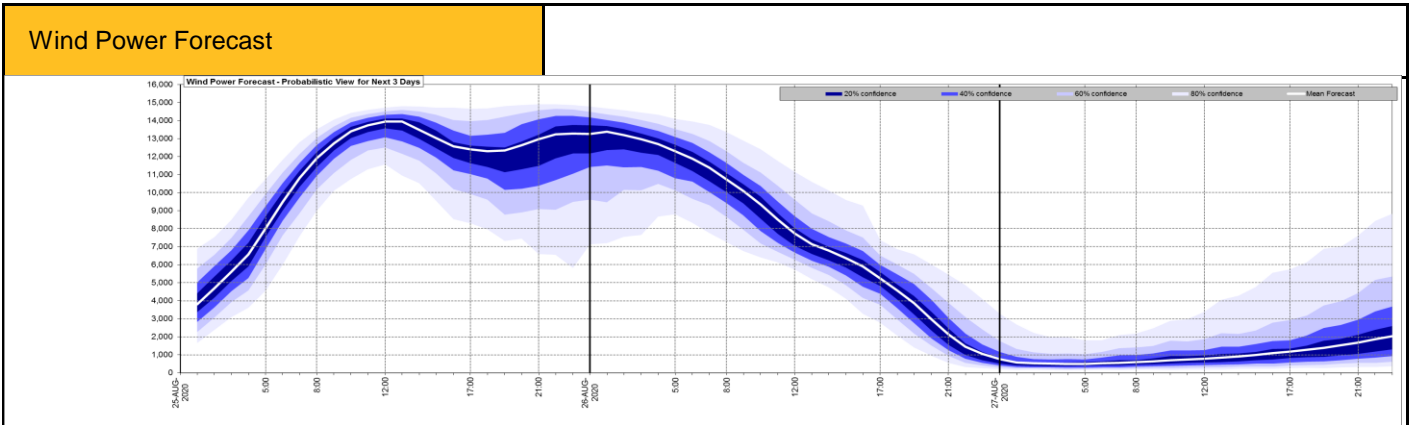
Today's High Level Risk Status Forecast for the next 24h			
General Status		Voltage	
Demand		System Inertia	
System Margins		Weather	
Generation		Transmission	
Active Constraints			

Today's Minimum De-Rated Margin	-1783 (SP 39)	
System Warnings	None	
Current BMU Largest Loss Risk	Generation	1000 MW
	Demand	560 MW



Yesterday's Market Summary	
Cash out price (Max)	£59.00 (SP41)
Cash Out Price (Min)	£0.00 (SP45)
Peak Demand Yesterday	28,113

Interconnectors			
Net Transfer Capacity (MWs)			
Today	Import	Export	
Netherlands (BritNed)	1100	1133	Fully available
France (IFA)	1500	1500	Pole Outage
Belgium (Nemo)	1013	1013	Fully Available
Ireland (EWIC)	500	530	Fully available
Northern Ireland (MOYLE)	500	500	Fully Available

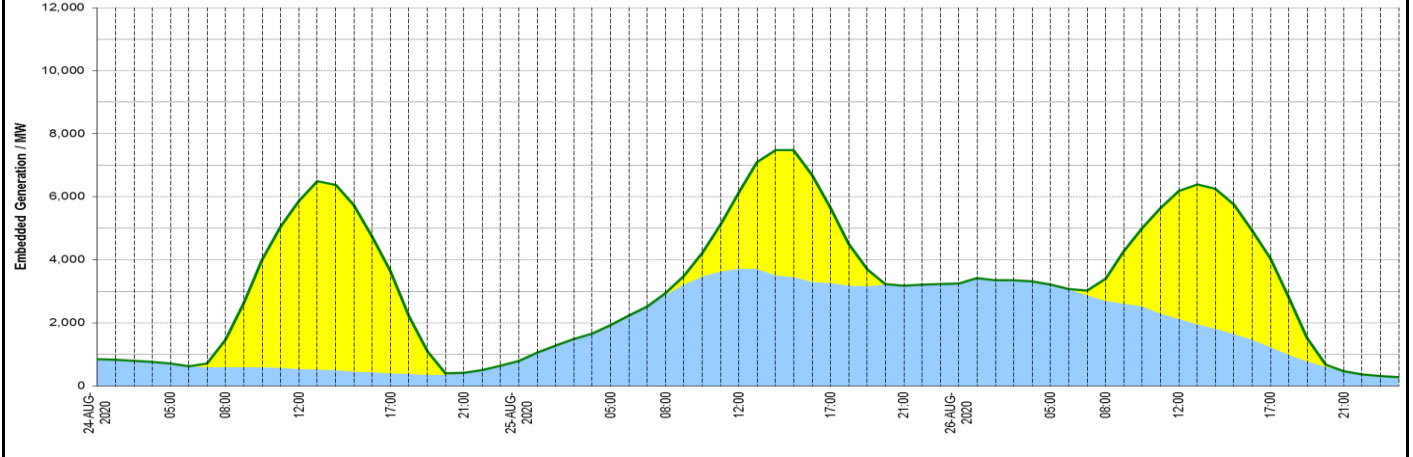


Key:

Expected embedded generation (MWs)

Embedded Generation Forecast

	24-AUG-2020					25-AUG-2020					26-AUG-2020						
	05:00	08:00	12:00	17:00	21:00	00:00	05:00	08:00	12:00	17:00	21:00	00:00	05:00	08:00	12:00	17:00	21:00
Solar (MW)	0	883	5310	3240	0	0	0	46	2447	2375	0	0	0	709	4056	2807	0
Wind (MW)	705	585	543	398	419	794	1935	2884	3708	3259	3171	3251	3209	2701	2122	1229	474
STOR (MW)	0	0	0	0	0	0	0	0	0	0	0	0	0	0	0	0	0
Total (MW)	705	1468	5853	3638	419	794	1935	2930	6155	5634	3171	3251	3209	3410	6178	4036	474



Weather	Source	Commentary
<p>Latest forecast (Summary)</p>	<p>Met Office SEPA Natural Resources Wales</p>	<p>Today: wet and windy start for most and then a very windy day, especially the southern half of the UK. Drier and brighter weather developing over southern and eastern England this afternoon but further north many staying wet all day..</p> <p>Tonight: Further spells of rain affecting much the UK this evening and overnight. Drier across southern UK and the far north of Scotland. Staying windy, especially during the evening.</p>
<p>General Weather Concerns e.g. wind, rain, snow, flooding, GB Weather Warnings</p>	<p>Met Office Weather Warnings SEPA Natural Resources Wales</p>	<p>Yellow warning of rain Areas affected: Central, Tayside & Fife Grampian Northern Ireland SW Scotland, Lothian Borders Strathclyde ACTIVE Started at: 00:00 BST on Tue 25 August Ends: 06:00 BST on Wed 26 August Heavy rain is expected during Tuesday and early Wednesday and is expected to result in some flooding and disruption to travel.</p> <p>Areas affected: North East England North West England Wales Yorkshire & Humber Heavy rain during Tuesday and early Wednesday and is expected to result in some flooding and disruption to travel.</p> <p>Areas affected: East Midlands East of England London & South East England North West England South West England Wales West Midlands Yorkshire & Humber. Storm Francis will bring some very strong winds leading to disruption to travel and power supplies along with potential damage to trees.</p> <p>UK Flood Warnings:</p> <p>10 Flood Alerts are in operation, all in Scotland</p>
Further Information		
<p>BM Reports</p>	<p>https://www.bmreports.com</p>	
<p>System Balancing Reports</p>	<p>https://www.nationalgrideso.com/balancing-data/system-balancing-reports</p>	
<p>Forecast Volumes and Costs</p>	<p>https://www.nationalgrideso.com/balancing-data/forecast-volumes-and-costs</p>	
<p>NGESO Insights</p>	<p>https://www.nationalgrideso.com/insights</p>	